



2024 Sunfish Championships
International Masters – March 16-19, 2024

Team Racing – March 20, 2024 (Separate SI)

US Nationals at Midwinters – March 21-23, 2024

Sailing Instructions

Posted: March 5, 2024

Organizing Authority: Davis Island Yacht Club, Tampa, FL 33606

Endorsed by International Sunfish™ Class Association (ISCA)

Endorsed by US Sunfish™ Class Association (USSCA)

1 RULES

- 1.1 The regattas will be governed by the rules as defined in *The Racing Rules of Sailing* (RRS) and the rules of the International Sunfish Class Association.
- 1.2 The US Sailing Prescriptions to RRS 60.3, 61.4, 67, 76.1, Appendix R, Appendix T (Arbitration) and Appendix V (Alternative Penalties) will apply. US Sailing Prescriptions are available online at [USP](#).
- 1.3 If there is a conflict between languages, the English text will take precedence.
- 1.4 In accordance with RRS G3, a boat chartered or loaned for this regatta may carry national letters or sail number in contravention of her class rules.
- 1.5 The notation [NP] means that an infraction of the rule will not be grounds for protest by a boat. This changes RRS 60.1(a).
- 1.6 While racing, except in an emergency, a boat shall not make voice or data transmissions and shall not receive voice or data communications that are not available to all boats, this includes any type of GPS or iWatch.

2 NOTICES TO COMPETITORS

- 2.1 The Official Notice Board (ONB) for the International Masters is online at [Masters ONB](#).
- 2.2 The Official Notice Board (ONB) for the US Nationals is online at [Nationals ONB](#).
- 2.3 The race committee will be using VHF channel 72 for communications to support boats.

3 CHANGES TO THE SAILING INSTRUCTIONS

- 3.1 Any change to the sailing instructions (SI) will be posted before 0900 on the day it will take effect, except that any change to the schedule of races will be posted by 2000 on the day before it will take effect.

4 SIGNALS MADE ASHORE

- 4.1 The signals made ashore will be displayed from the flagpole at the West end of the property.
- 4.2 When flag AP is displayed ashore, '1 minute' is replaced with 'not less than 45 minutes' in race signal AP.

5 SCHEDULE OF RACES for Masters and Midwinters

Masters Date	Midwinters Date	Time	Activity	Comment
Sat, Mar 16		1400	Practice racing (Masters only)	
Sun, Mar 17	Thurs, Mar 21	0930 1130	Competitor Meeting First Scheduled Warning	Under the Clubhouse Three races are scheduled
Mon, Mar 18	Fri, Mar 22	0830 1000	Competitor Meeting First Scheduled Warning	Under the Clubhouse Three races are scheduled
Tues, Mar 19	Sat, Mar 23	0830 1000 1400	Competitor Meeting First Scheduled Warning No Warning after this time	Under the Clubhouse Three races are scheduled

- 5.1 One extra race per day may be sailed, solely at the race committee's discretion, provided that racing does not get more than one race ahead of schedule.
- 5.2 To alert boats that a race or sequence will begin soon, the orange start line flag will be displayed with one sound at least five (5) minutes before a warning signal is made.

6 CLASS FLAG

- 6.1 The class flag will be a red Sunfish logo on a white background.

7 THE RACING AREA AND COURSES

- 7.1 The approximate racing area is shown in Attachment 1.
- 7.2 The diagrams in Attachment 2 show possible courses, including the approximate angle between legs, the order in which marks are to be passed, and the side on which each mark is to be left.
- 7.3 The course identifier and approximate magnetic bearing to the first mark will be shown on a course board on the race committee signal vessel before the warning signal for each race. An example is shown below:

L4	Course L4
270	Approximate magnetic bearing to windward mark

- 7.4 If a gate mark (4s or 4p) is missing the remaining mark shall be left to port.

8 MARKS

- 8.1 Marks 1, 4s and 4p will be orange tetrahedrons.
- 8.2 Mark 1a (offset) will be a small orange ball.
- 8.3 The new mark, as provided in SI 10, will be a green tetrahedron.
- 8.4 The starting marks will be race committee vessels displaying orange flags.
- 8.5 The finishing marks will be a race committee vessel displaying a blue flag and either a race committee vessel displaying a blue flag or a yellow inflatable mark.

9 THE START

- 9.1 The start line will be between staffs displaying orange flags on the signal and pin vessels.
- 9.2 A boat starting later than five (5) minutes after her starting signal will be scored Did Not Start without a hearing. This changes RRS A5.1 and A5.2.
- 9.3 Individual and General Recall flags may also be displayed by the port end starting line vessel. **These are not official flags under RRS 29. The timing of these flags or lack of these flags shall not be considered grounds for redress, changing RRS 62.1.**
- 9.4 The race committee **will not hail** the sail numbers of OCS boats. After all boats have started, the race committee may broadcast starting penalties on VHF channel 72. These broadcasts are only a courtesy to coaches and spectators (not competitors) and carry no guarantee of accuracy or completeness.
- 9.5 As a courtesy, the race committee shall display a board on the signal vessel showing the sail number of all boats identified as OCS or UFD or BFD in the race just completed. Any improper action or omission associated with this display board is not subject to redress. This changes RRS 62.1.

10 CHANGE OF THE NEXT LEG OF THE COURSE

- 10.1 To change the next leg of the course, the race committee will lay a new mark (or move the finishing line) and remove the original mark as soon as practicable. When, in a subsequent change, a new mark is replaced, it will be replaced by an original mark.
- 10.2 In the event of a mark 1 change to a new mark, there will not be an offset mark 1a at the new mark.

11 THE FINISH

- 11.1 The finishing line will be between a staff displaying a blue flag on a race committee vessel and either the staff displaying a blue flag on a race committee vessel or the course side of a yellow tetrahedron.

12 PENALTY SYSTEM

- 12.1 [DP] Penalties for breaking a rule, other than those of Part 2, RRS 31 or RRS 42, will be determined by the protest committee. Penalties may be less than disqualification.

13 TIME LIMITS AND TARGET TIMES

- 13.1 Time limits are as follows:

Race Time Limit	Mark 1 Time Limit	Finishing Window
90 minutes	30 minutes	20 minutes

- 13.2 The Race Time Limit is the maximum time for the first boat to start, sail the course and finish.
- 13.3 If no boat has passed Mark 1 within the Mark 1 Time Limit, the race will be abandoned.
- 13.4 The Finishing Window applies to all boats still racing 20 minutes after the first boat sails the course and finishes. These boats will be scored Time Limit Expired (TLE) without a hearing. The score will be equal to the number of boats that sail the course and finish, plus two (2) points. This changes RRS 35, A5.1, A5.2, and A10.
- 13.5 The race target time is 45-50 minutes. Failure to meet the target time will not be grounds for redress. This changes RRS 62.1(a).

14 SCORING

- 14.1 One (1) completed race is required to constitute a series.
- 14.2 A maximum of nine (9) races are scheduled for each series.
- 14.3 When fewer than six (6) races have been completed, a boat's series score will be the total of her scores.
- 14.4 When six (6) to nine (9) races have been completed, a boat's series score will be the total of her race scores, excluding her worst race. This modifies Appendix A.

15 HEARING REQUESTS

- 15.1 Hearing Request and Scoring Inquiry forms are available in the Regatta Room, located on the lower level of the Clubhouse.
- 15.2 Protests shall be delivered there within the protest time limit, which is 45 minutes after the race committee signal boat docks.
- 15.3 Prior to the end of the protest time limit, the race committee will post on the ONB a list of penalties being assigned by the race committee. The deadline for requesting redress based on these penalties will be either 30 minutes after the posting of the list by the race committee or 30 minutes after the end of the protest time limit, whichever is later. This changes RRS 62.2.
- 15.4 Notices will be posted promptly on the ONB after the receipt of a protest or a request for redress to inform competitors of hearings in which they are parties or named as witnesses. Hearings will be held in the Regatta Room in approximately the order of receipt beginning as soon as possible after their receipt.

16 SAFETY REGULATIONS

- 16.1 [NP] Check-in procedures: Before the warning signal for the first race of each day in which she intends to compete, each boat shall check in by sailing past the stern of the race committee signal vessel on starboard tack, hail her sail number and obtain acknowledgment of the race committee. Boats that fail to check-in may be scored with a 30% penalty in her first completed race of the day. This changes RRS A5.1.

16.2 [NP] A boat that retires from a race shall notify the race committee as soon as practicable. Failure by any competitor to inform the race committee either by hail, or by telephone to the Clubhouse at (813) 251-1158 that they have retired from racing may result in a 20% penalty, without a hearing, applied to the competitor's last completed race. This changes RRS A5.1.

16.3 [NP] [DP] At all times while on the water, except while actively adding or removing clothing, each competitor is required to wear a PFD that is appropriately sized for the competitor. For US competitors, the PFD must be 100% dependent on foam and approved by the US Coast Guard. For international competitors, the PFD/Buoyancy aide may be one approved for use in the competitor's country of origin. This changes the preamble to Part 4 and RRS 40.

17 EQUIPMENT AND MEASUREMENT CHECKS [NP] [DP]

17.1 In the event of damage, boats and equipment may only be substituted with the permission of the technical committee, if available, or the PRO, except as in SI 17.2. Equipment substitution forms are available in the Regatta Room, located on the lower level of the Clubhouse.

17.2 If the damage occurs less than two hours before the first scheduled start on a racing day, and before the start of the last race of the day, provisional verbal permission shall be obtained from the technical committee or PRO before using the equipment in a race. Written permission shall be requested before the end of the protest time limit at the end of the day in which substitution takes place.

18 SUPPORT VESSELS

18.1 No competitor shall be towed to the race area. Boats shall not be towed from the race area, except in an emergency, unless Flag O is displayed on a race committee vessel. When Flag O is displayed, a tow shall not exceed 5 knots.

18.2 Please refer to NoR 11 – Support Boats for additional requirements.

19 TRASH DISPOSAL

19.1 [DP] [NP] Trash may be placed aboard support or official vessels.

20 RACE OFFICIALS

Event Chair: Gail Heausler, heauslerg@gmail.com, 813-758-8484

Principal Race Officer: Taran Teague

Protest Committee Chair: Carrie Greene

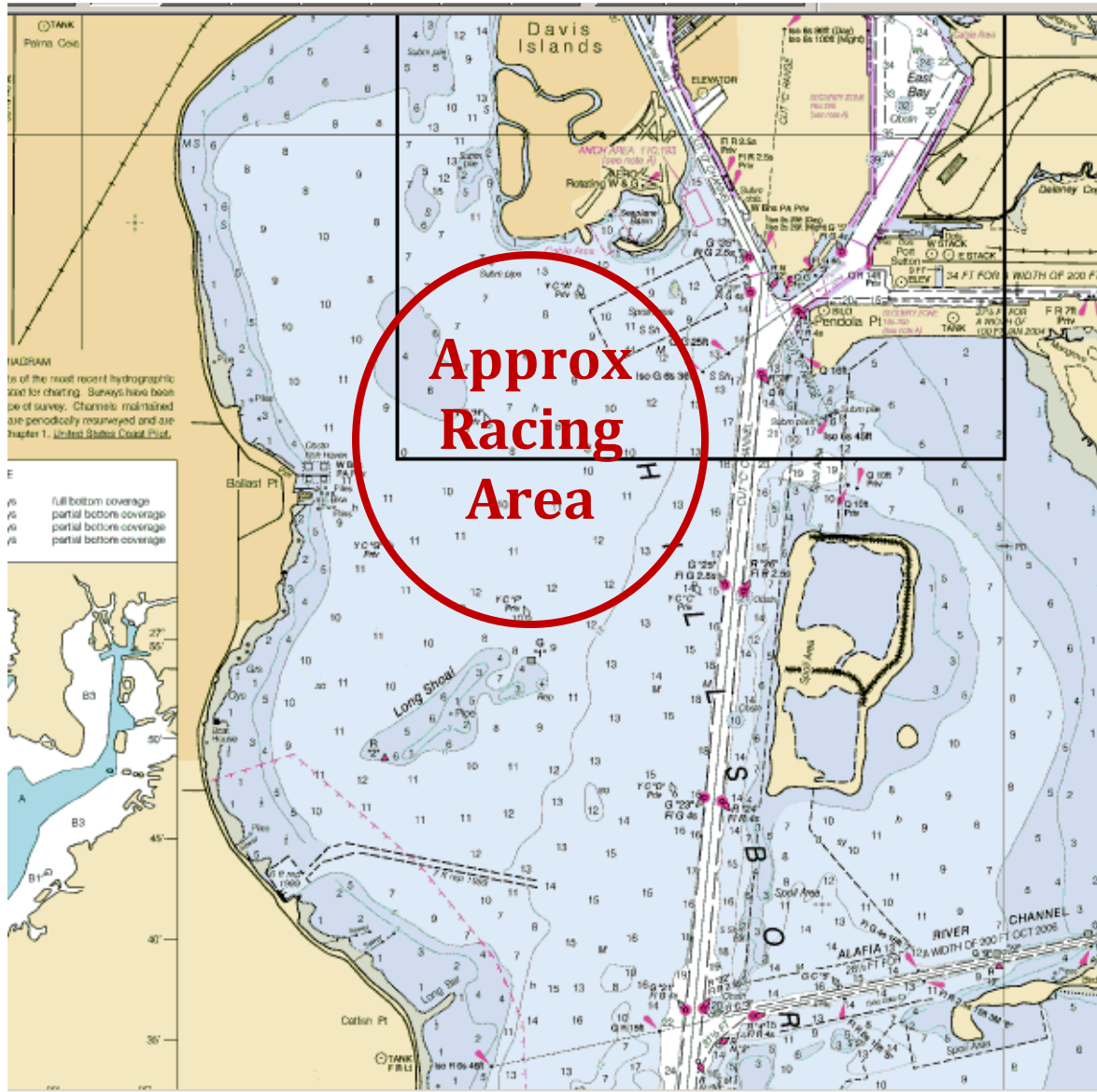
ISCA Chief Measurer: John Butine

Technical Committee: Rich Chapman, sail59541@gmail.com, 847-651-2112

Scorer: Judy Hanlon

Class Administrator: Martine Zurinkas, sunfishhoff@gmail.com

Attachment 1 - Approximate Racing Area



Attachment 2 – Possible Courses

Course L4 – Windward/Leeward (4 legs) Reach to Finish	Course W5 - Windward/Leeward/finish to Windward (5 legs)	Course T5 – Triangle/Windward/Leeward Reach to Finish
Mark Rounding Order – Start, 1, 1a, 4s/4p, 1, 1a, 4p, finish (F and RC vessel)	Mark Rounding Order – Start, 1, 1a, 4s/4p, 1, 1a, 4s/4p, finish (F and RC vessel)	Mark Rounding Order – Start, 1, 2, 3, 1, 3, finish (F and RC vessel)