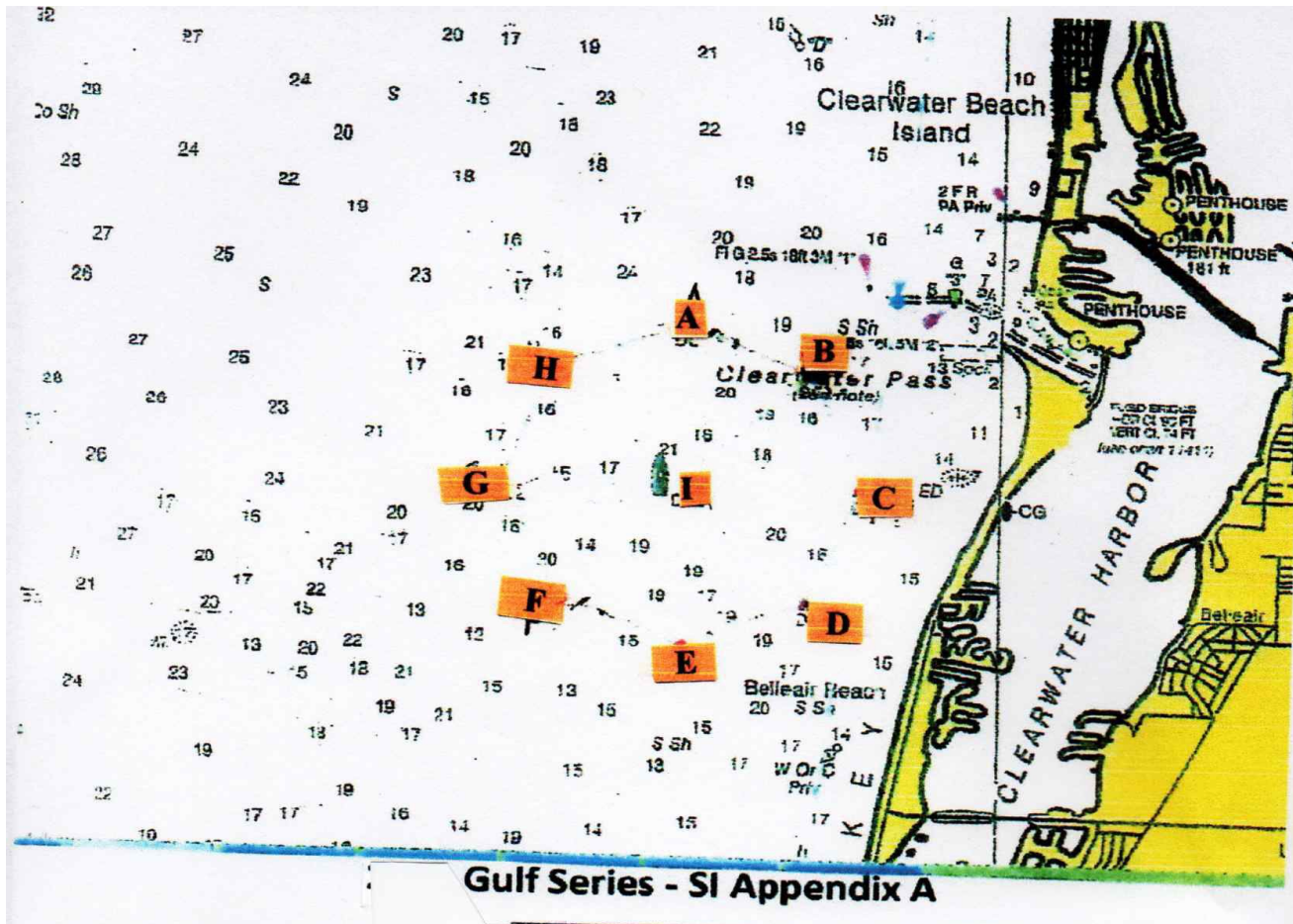


Appendix A



Mark #	Latitude	Longitude
A	27 58.0 N	082 52.0 W
B	27 57.7 N	082 51.2 W
C	27 57.0 N	082 50.9 W
D	27 56.3 N	082 51.2 W
E	27 56.0 N	082 52.0 W
F	27 56.3 N	082 52.8 W
G	27 57.0 N	082 53.1 W
H	27 57.7 N	082 52.8 W
I	27 57.0 N	082 52.0 W

Race Courses Depending Upon Wind Strength and Direction

Wind Direction	Light Wind (7 or less)	Medium to Heavy 8+
N	N1 A-G-E-FINISH	N2 A-G-E-A-E-FINISH
NE	NE1 B-H-F-FINISH	NE2 B-H-F-B-F-FINISH
E	E1 C-A-G-FINISH	E2 C-A-G-C-G-FINISH
SE	SE1 D-B-H-FINISH	SE2 D-B-H-D-H-FINISH
E	S1 E-C-A-FINISH	S2 E-C-A-E-A-FINISH
SW	SW1 F-D-B-FINISH	SW2 F-D-B-F-B-FINISH
W	W1 G-E-C-FINISH	W2 G-E-C-G-C-FINISH
NW	NW1 H-F-D-FINISH	NW2 H-F-D-H-D-FINISH

<p>Courses are either a simple triangle or modified Olympic.</p>	<p>The above courses are all simple triangles. Courses approximately 5nm.</p>	<p>The above courses are modified Olympic. Courses approximately 9 nm.</p>
--	---	--

Mark #	Latitude	Longitude
A	27 58.0 N	082 52.0 W
B	27 57.7 N	082 51.2 W
C	27 57.0 N	082 50.9 W
D	27 56.3 N	082 51.2 W
E	27 56.0 N	082 52.0 W
F	27 56.3 N	082 52.8 W
G	27 57.0 N	082 53.1 W
H	27 57.7 N	082 52.8 W
I	27 57.0 N	082 52.0 W

Mark
A
B
C
D
E
F
G
H
I

#	Lat	Long
	27 58.0 N	082 52.0 W
	27 57.7 N	082 51.2 W
	27 57.0 N	082 50.9 W
	27 56.3 N	082 51.2 W
	27 56.0 N	082 52.0 W
	27 56.3 N	082 52.8 W
	27 57.0 N	082 53.1 W
	27 57.7 N	082 52.8 W
	27 57.0 N	082 52.0 W