

2024 COMMODORE'S CUP REGATTA

May 11, 2024 Tampa Sailing Squadron Apollo Beach, Florida

SAILING INSTRUCTIONS

Event website: <https://www.yachtscoring.com/emenu.cfm?eID=16625>

The notation '[DP]' in a rule means that the penalty for a breach of the rule may, at the discretion of the protest committee, be less than disqualification.

The notation '[NP]' in a rule means that a boat may not protest another boat for breaking that rule. This changes RRS 60.1(a)

1 RULES

1.1 The event is governed by the *rules* as defined in The Racing Rules of Sailing.

2 CHANGES TO THE SAILING INSTRUCTIONS

2.1 Any change to the sailing instructions will be posted before 0900 on the day it will take effect, except that any change to the schedule of races will be posted by 2000 on the day before it will take effect.

2.2 Changes to a sailing instruction may be made on the water by hoisting signal flag L on the Signal boat and advising each boat that comes within hail of the change.

2.3 When signal flag AP is displayed ashore, changes may be posted before flag AP is removed.

3 COMMUNICATIONS WITH COMPETITORS

3.1 Notices to competitors will be posted on the official notice board located by the flagpole at TSS. The online notice board at the event website will act as a repeater for the physical official notice board.

3.2 On the water, the race committees intend to monitor and communicate with competitors on VHF channel 72 for the RRS 26 Start classes (Spinnaker), and channel 69 for the Pursuit Start classes (all others).

4 SIGNALS MADE ASHORE

4.1 Signals made ashore will be displayed at the flagpole located adjacent to the TSS official notice board.

4.2 When flag AP is displayed ashore, '1 minute' is replaced with 'not less than 45 minutes' in Race Signals AP.

5 SCHEDULE OF RACES

5.1 Spinnaker class: 1100 first warning for RRS 26 start

5.2 Pursuit-start classes (all others): 1200 Pursuit Start BASE (first boat) start time

5.3 One race for each class is scheduled

6 CLASS FLAGS

6.1 For the Spinnakerclass unmodified RRS 26 starts, the class flag is numeral pennant One.

6.2 The Pursuit-start course classes will use (World Sailing Test Rule DR21-01 for) Pursuit starts, class flags do not apply.

7 RACING AREA

7.1 There will be two race courses, Spinnaker class will sail a different course than the Pursuit classes...

7.2 The diagrams in SI Addendum 'A' show the locations of the racing areas (courses).

8 COURSES and MARKS

8.1 The diagrams in SI Addendum 'A' show the courses and marks, including the order and direction of rounding for each.

9 THE START

9.1 For the Spinnaker class, the race will be started in the default manner using RRS 26.

9.2 For all other classes, racing will be started using World Sailing Test Rule DR21-01, or 'Pursuit starts'. Note also NOR amendment of May 8 inserting 1.3 in NOR 1 RULES, reproduced here for convenience:

1.3 For Pursuit-style starting classes ONLY

1.3.1 The OA has adopted World Sailing Test Rule DR21-01 for this event. Accordingly, the definition of Start is changed as follows:

Start A boat starts when, her hull having been entirely on the pre-start side of the starting line and having complied with rule 31 if it applies, any part of her hull crosses the starting line from the pre-start side to the course side either

- (a) at or during her starting signal, or
- (b) during the last 30 seconds before her starting signal.

1.3.2 When a boat starts in accordance with item (b) of the definition Start, she shall not return to the pre-start side of the line, and the starting penalty shall be having the amount of time that she was over early added to her elapsed time, PLUS 30 seconds per mile of rated course length added to her elapsed time after finishing.

9.2.1 Starting times will be assigned by the race committee, staggered according to each boats' rated or assigned (WF)PHRF handicap, weighted by the rated length of the course. A list of starting times will be made available on the Notice Board when the course selection is posted, see SI 8 COURSES and MARKS.

9.2.2 For the purposes of the definition of "racing", each boat's preparatory signal shall be deemed to have occurred four (4) minutes prior to their scheduled start.

9.2.3 At five (5) minutes before the base start time, the race committee will display the (orange) Pursuit-start line flag.

9.3 [DP] After the warning signal for the first start, boats shall stay clear of the starting area until four (4) minutes before their scheduled starting time. In particular, Pursuit-start boats shall stay well clear of the starting area from 15 minutes before the scheduled signal for Spinnaker boats, and stay clear until five (5) minutes AFTER the Spinnaker fleet start has completed.

9.4 As permitted in RRS 42.3(i), prior to *starting* and not within two (2) boat lengths of the starting line, a boat coming to their start may continue to motor after her preparatory and starting signal times have passed.

10 THE FINISH

10.1 The finishing line is between a staff displaying a BLUE flag on the Signal vessel at one end and the course side of the nearby line end finishing mark.

11 PENALTY SYSTEM

11.1 Appendix V1 Alternative Penalties will apply.

12 TIME LIMITS

12.1 The time limit for all boats to sail the course and finish is 1600.

11.2 Boats still racing after 1600 will be scored DNF.

13 HEARING REQUESTS

13.1 A boat intending to protest shall notify the race committee of her intentions and the boat(s) to be protested promptly after finishing that race or retirement. This changes RRS 61.1(a).

13.2 The protest time limit is 30 minutes after the race committee finish vessel docks. The docking times and protest time limits will be posted on the Official Notice Board.

13.3 Hearing request forms are available from the Race Committee and must be submitted within the protest time limit to file a protest.

13.4 Notices will be posted on the Official Notice Board no later than 15 minutes after the protest time limit to inform competitors of hearings in which they are parties or named as witnesses.

14 SCORING

14.3 Racing will be scored using PHRF Time-on-Distance.

14.2 Boats with valid WFPHRF certificates will use their RLC rating, other boats will use ratings assigned by the Organizing Authority.

15 SAFETY REGULATIONS

15.1 [DP] Check-in: Before the first warning signal for the first race each day, each boat shall pass close behind the stern of the race committee boat and hail her sail number and name, which will be acknowledged.

10.2 [DP] A boat that retires from a race, or leaves the course area, or returns to the course area during racing shall notify the race committee as soon as possible. A boat failing to meet this requirement may be protested by the race committee or the protest committee.

10.3 [DP] A boat and its crew shall at all times keep clear of all commercial vessels and shall not maneuver in any manner which would cause a commercial vessel to be unable to sail its proper course or carry out its commercial functions in a normal manner. A boat whose actions or maneuvers result in a danger signal (5 sounds) from commercial vessels shall be protested by the race committee or protest committee. The penalty for breaking this rule may include disqualification from the regatta.

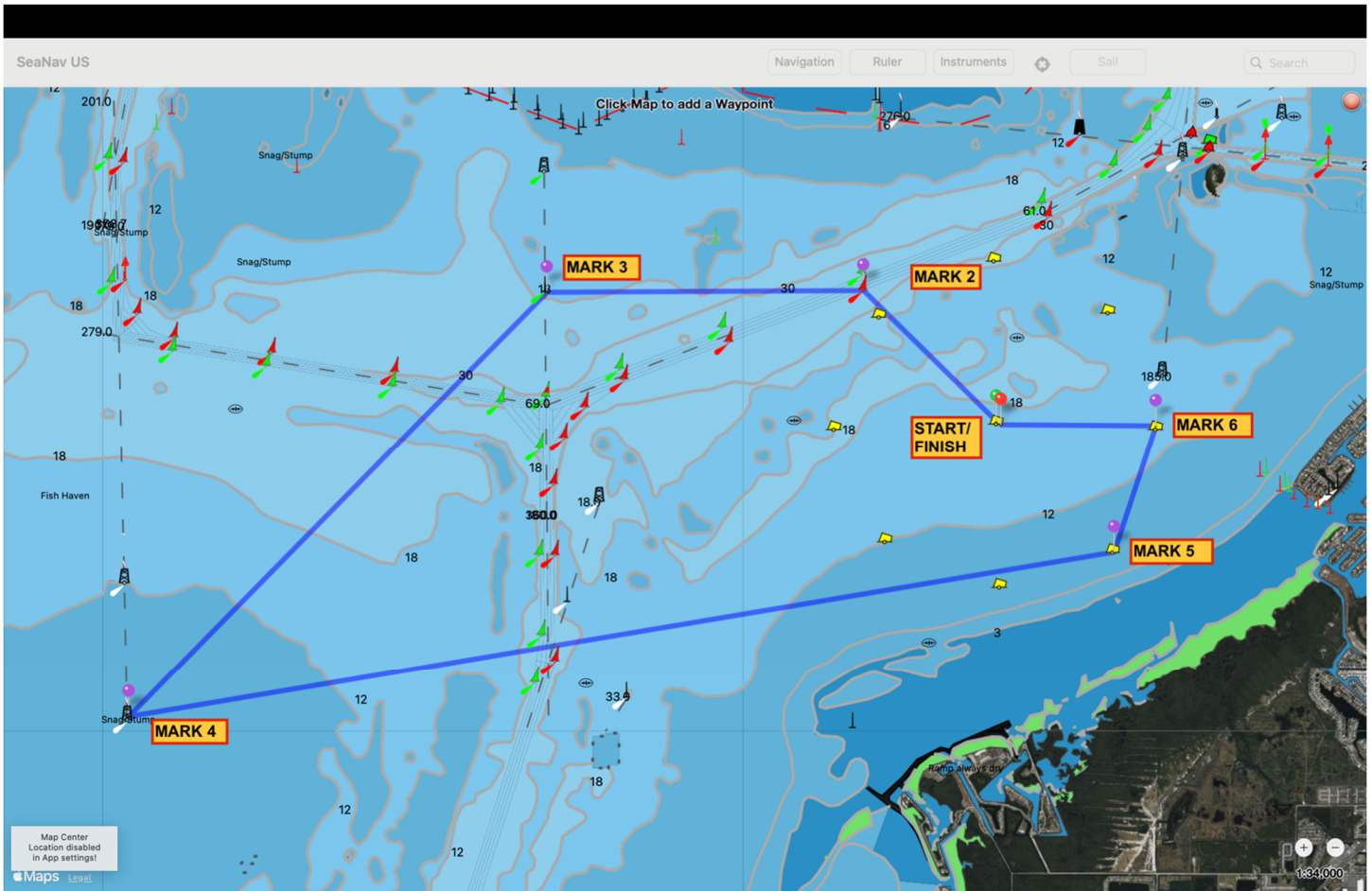
###

2024 TSS Commodore's Cup - PHRF - SPINNAKER Course

Lengths are in Nautical Miles. Latitude/Longitude are in Degrees and Minutes. Headings are True Course

Total Course Length: 14.91 nm

Mark #	Mark ID	Latitude	Longitude	Description	Port/Starboard	Distance nm	Direction °
Start	TSS Race Buoy - X	N 27 46.932	W 82 28.22	White Cylinder X	Start		
Mk 2	Gadsden Pt Cut - 6	N 27 47.734	W 82 29.158	Red Can #6	Port	1.16	311
Mk 3	Tampa Cut F Inbnd Rng Front	N 27 47.73	W 82 31.387	HAF 17ft	Port	1.98	270
Mk 4	Tampa Cut J Outbnd Rng Rear	N 27 45.057	W 82 34.315	HAF 50ft	Port	3.73	228
Mk 5	TSS Race Buoy - D	N 27 46.133	W 82 27.399	Yellow Cylinder D	Port	6.22	81
Mk 6	TSS Race Buoy - C	N 27 46.9	W 82 27.095	Yellow Cylinder C	Port	0.82	22
Finish	TSS Race Buoy - X	N 27 46.932	W 82 28.22	White Cylinder X	Finish	1.00	272



2024 TSS Commodore's Cup - PURSUIT START Course

Total Course Length: 9.78 nm

Lengths are in Nautical Miles. Latitude/Longitude are in Degrees and Minutes. Headings are True Course

Mark #	Mark ID	Latitude	Longitude	Description	Port/Starboard	Distance nm	Direction °
Start	TSS Race Buoy - X	N 27 46.932	W 82 28.22	White Cylinder X	Start		
Mk 2	Gadsden Pt Cut - 6	N 27 47.731	W 82 29.158	Red Can #6	Port	1.16	311
Mk 3	Tampa Cut F Inbnd Rng Front	N 27 47.730	W 82 31.387	HAF 17ft	Port	1.98	270
Mk 4	Tampa Cut E Outbnd Rng Rear	N 27 46.411	W 82 31.011	HAF 18.7ft	Port	1.37	164
Mk 5	TSS Race Buoy - G	N 27 46.900	W 82 29.357	Yellow Cylinder G	Starboard	1.55	74
Mk 6	TSS Race Buoy - D	N 27 46.133	W 82 27.399	Yellow Cylinder D	Port	1.90	114
Mk 7	TSS Race Buoy - C	N 27 46.900	W 82 27.095	Yellow Cylinder C	Port	0.82	22
Finish	TSS Race Buoy - X	N 27 46.932	W 82 28.22	White Cylinder X	Finish	1.00	272

