



# Wednesday Night Twilight Series May 15 - September 4, 2024



## Sailing Instructions (SIs)

as of 4/11/24

*The notation '[DP]' in a rule means that the penalty for a breach of the rule may, at the discretion of the protest committee, be less than disqualification. This changes RRS 60.1(a).*

### 1 RULES

- 1.1 The event is governed by the rules as defined in The Racing Rules of Sailing.
- 1.2 Appendix T and US Sailing Prescriptions Appendix V apply.
- 1.3 The measurement ratings and rules will be PHRF windward/leeward fully crewed ratings and non-spinnaker rules as administered by the YRA of LIS (boats are restricted to sailing with jib and main only - no spinnakers, gennakers or bloopers - with no more than one sail at any time in the foretriangle except during a seamanlike sail change).
- 1.4 Once a course has been posted, a new course may not be posted unless accompanied by the hoisting of code flag "L" with one sound signal and a VHF call announcing the new course. This changes RRS 27.1.
- 1.5 For Indian Harbor YC competitors only: To be eligible for season prizes, a representative from the boat must serve at least one evening on an Indian Harbor Twilight Series race committee. If on an evening that the representative is to serve, racing is canceled, or the boat's representative is excused from duty by the principal race officer, the boat still gets credit for serving on the race committee.

### 2 CHANGES TO SAILING INSTRUCTIONS

- 2.1 Any change to the sailing instructions will be posted before 0900 on the day it will take effect, except that any change to the schedule of races will be posted and communicated by 2000 on the Sunday before it will take effect. Any change other than a change to the schedule of races will be repeated as an on the water change per SI 2.2.
- 2.2 Per RRS 90.2(2), changes to a sailing instruction may be made on the water. To announce an on-water change, the race committee shall signal flag "L" with one sound signal and announce the change on VHF 65A/1065.

### 3 COMMUNICATIONS WITH COMPETITORS

- 3.1 Notices to competitors will be posted on the official notice board located at the [Yachtscoring](#) event site.
- 3.2 On the water, the race committee intends to monitor and communicate with competitors on VHF radio channel 65A/1065.
- 3.3 The following communications may be made by the race committee on VHF channel 65A/1065
  - Intention to start on time or with a delay
  - One minute courtesy announcement prior to the first warning
  - The course for each class
- 3.4 [DP] From the first warning signal until the end of that evening's racing, except in an emergency, a boat shall not make voice or data transmissions and shall not receive voice or data communication that is not available to all boats.

### 4 SCHEDULE OF RACES

- 4.1 Racing will be held every Wednesday evening starting May 15 and ending September 4. Each evening will consist of one race.
- 4.2 From May 15th to August 21st, the scheduled time of the first warning signal is 1855; from August 28th to September 4th, the scheduled time of the first warning signal is 1825.

### 5. CLASSES & CLASS FLAGS

Racing will be divided into four classes:

- Class 1 PHRF <=TBD Numeral pennant 1
- Class 2 PHRF TBD Numeral pennant 2
- Class 3 PHRF >=TBD Numeral pennant 3

- 5.2 The OA reserves the right, on one designated evening during the series, to add an additional "Pursuit Start" for boats that opt in to this. An additional Addendum 3 with course options, start sequence procedure and start times

will be posted on Yachtscoring and circulated to competitors emails in the event OA exercises this option..

## **6 RACING AREA**

The racing area is inside Captain Harbor. SI Addendum A shows the location of the racing area.

## **7 COURSES**

- 7.1 Pre-configured courses as described in Addendum A will be signalled by a letter beneath the class number on the signal boat. Classes without a course designation beneath their class number shall sail the course of the next faster rated class to have a course.
- b. The Pursuit Division will always use Addendum 3 Course Options and round marks as noted on Addendum 1.
1. Course distances will be measured from Starting Area "T" and will not be adjusted for the actual location of the Signal Boat.
- 7.2 Courses will not be shortened prior to the second rounding mark. This changes RRS 32.
- 7.3 Once a course has been posted, a new course may not be posted unless accompanied by the hoisting of code flag "L" with one sound signal and a VHF call announcing the new course.
- 7.4 The race committee may signal a twice around course by adding a "2" under the course letter. When so indicated, Mark T/Finish is part of the course prior to the Finish. For example, if Course D is Marks A-V-T(Finish) then Course D2 is A-V-T-A-V-T(Finish).
- 7.5 [DP] Prior to her warning signal, boats shall stay clear of the starting line.
- 7.6 The race committee may signal a modified twice around course by adding "X" under the course letter. When so indicated, Mark T/Finish is NOT part of the course until the Finish. For example, if Course A is Marks B-X-T(Finish), then Course AX is Marks B-X-B-X-T(Finish).

## **8 MARKS**

Marks are as described in Addendum B.

## **9. THE START**

- 9.1. Races will be started using RRS 26 with the warning signal made five minutes before the starting signal.
- 9.2. Starting Line: The starting line will be between a staff displaying a flag on the Race Committee Vessel in the vicinity of Starting Area "T" in Addendum B and a Tetrahedron Mark.
- 9.3. If at the warning, multiple class flags are signaled, those classes will start together.
- 9.4. To start classes together, the race committee will make such an announcement prior to the warning.
- 9.5. The starting line is between a staff displaying an orange flag on the signal vessel at the starboard end and the course side of the port-end starting mark.
- 9.6. Boats whose warning signal has not been made shall avoid the starting area during the starting sequence for other races.
- 9.7. If any part of a boat's hull is on the course side of the starting line at her starting signal and she is identified, the race committee will attempt to hail her sail number. Failure to hail her number, failure of her to hear such a hail, or the order in which boats are hailed will not be grounds for a redress for request. This changes RRS 62.1(a).
- 9.8. A boat that does not start within five minutes after her starting signal will not be scored. This changes RRS A5.1 and A5.2.

## **10 CHANGE OF THE NEXT LEG OF THE COURSE**

The course may not be changed after the preparatory signal. This changes RRS 33.

## **11 THE FINISH**

The finishing line is between a staff displaying a colored flag on the signal or mark boat and the course side of the nearby finishing mark.

## **12 ALTERNATIVE PENALTIES**

- 12.1 Appendix V1, Penalty at the Time of the Incident applies whereby a boat may take a One-Turn Penalty when she may have broken a rule of Part 2 or rule 31 while racing, but when she may have broken a rule of Part 2 while in the zone around a mark other than a starting mark, her penalty shall be a Two-Turns Penalty.
- 12.2 Appendix V2, Post-Race Penalties, shall apply.

## **13 TIME LIMITS**

- 13.1 The Mark 1 Time Limit and Race Time Limit (see RRS 35) are as follows:

Mark 1 Time Limit	Race Time Limit
30 minutes	2045

- 13.2 If no boat of a class has passed the first mark within the Mark 1 Time Limit, the race will be abandoned for that class.
- 13.3 The Race Time Limit is the time for boats to finish. Boats failing to finish within the Race Time Limit, and not having retired prior to the Race Time Limit or subsequently penalized or given redress, will be scored Time Limit Expired (TLE) without a hearing. A boat scored TLE shall be scored points for the finishing place two more than the points scored by the last boat in her class that finished within the Race Time Limit. This changes RRS 35, A5.1, A5.2 and A10.

#### 14 PROTESTS & HEARING REQUESTS

- 14.1 Boats shall announce their intention to protest or any penalty turns taken via VHF 65A/1065 when they finish and repeat such announcements until acknowledged by the race committee.
- 14.2 Protests shall be delivered to either of the organizing authority clubs no later than one hour after finishing (the “protest time limit”)
- 14.3 Protests will be heard at the first mutually convenient time though no later than the next Wednesday evening.

#### 15 SCORING & PRIZES

- 15.1 Series scores will be based on a high point percent-of-perfection scoring system.
- 15.2 Individual race results will be scored based on time-on-time and use YRA of LIS PHRF windward/leeward ratings.
- 15.3 In any individual race, only boats that start will be scored.
- 15.4 To be eligible for prizes, a boat must start at least 50% (rounded up) of the races completed for her class and fulfill her race committee requirement (NoR 1.9/SI 1.5).
- 15.5 For boats that start more than the minimum needed to be eligible for prizes, that boat’s series score shall be the total of her race scores excluding up to her two worst scores subject to the remaining races to count be at least 50% (rounded up) of the races completed for her class.
- 15.6 Prizes will be awarded for first through third places in each class.

#### 16 SAFETY REGULATIONS

[DP] A boat that retires from a race shall notify the race committee at the first reasonable opportunity.

#### 17 RISK STATEMENT

RRS 3 states: ‘The responsibility for a boat’s decision to participate in a race or to continue to race is hers alone.’ By participating in this event each competitor agrees and acknowledges that sailing is a potentially dangerous activity with inherent risks. These risks include strong winds and rough seas, sudden changes in weather, failure of equipment, boat handling errors, poor seamanship by other boats, loss of balance on an unstable platform and fatigue resulting in increased risk of injury. Inherent in the sport of sailing is the risk of permanent, catastrophic injury or death by drowning, trauma, hypothermia or other causes.

#### 18 FURTHER INFORMATION

For further information please contact IHYC Sailing Department at [Sailing@indianharboryc.com](mailto:Sailing@indianharboryc.com)

IHYC Race Committee: Len LaPorta at [regatta@indianharboryc.com](mailto:regatta@indianharboryc.com)

IHYC Event Chair: Rick Sinclair at [ricksinclair21728@hotmail.com](mailto:ricksinclair21728@hotmail.com)

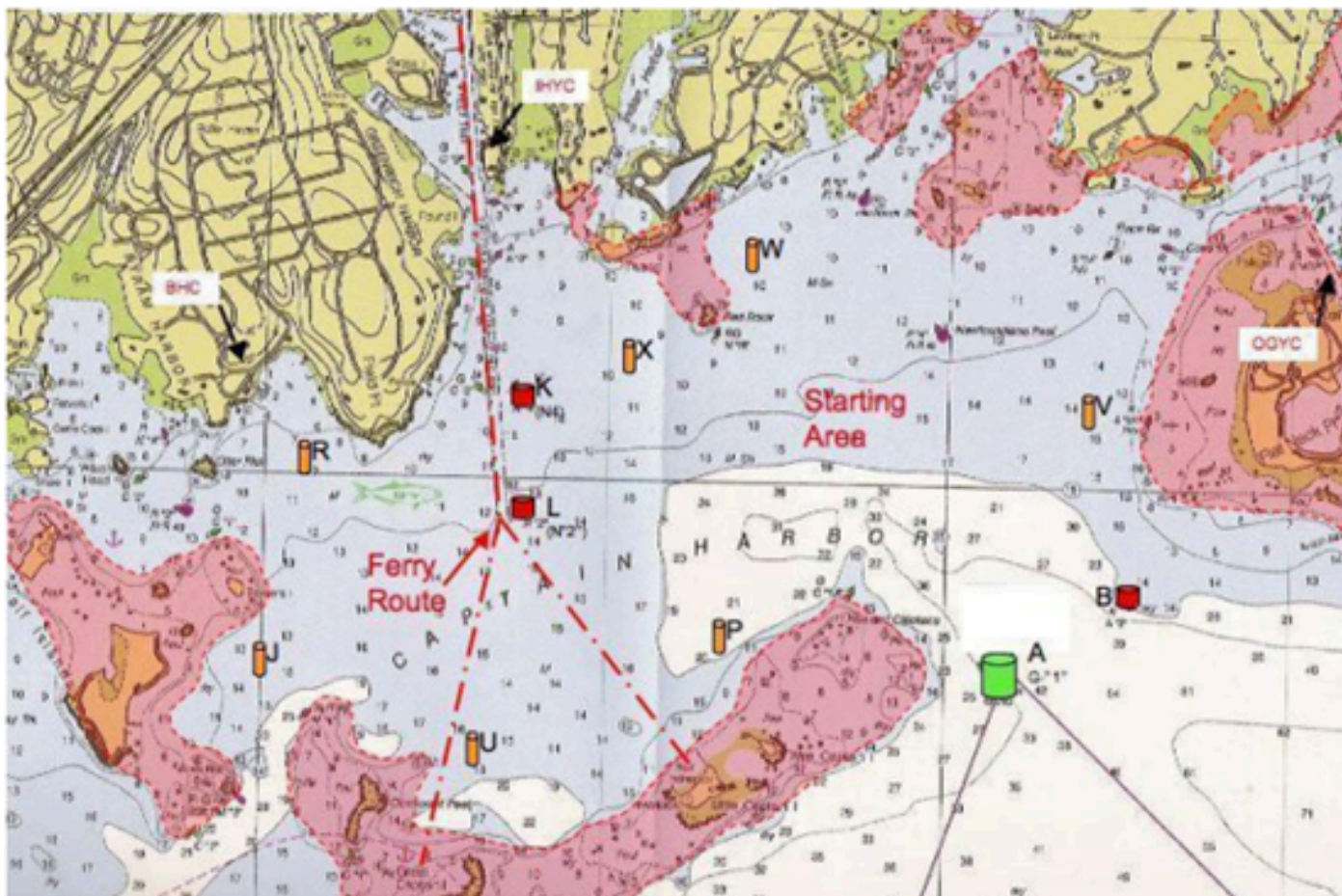
OGYC Race Chair: Liam Hegarty [liamhe@gmail.com](mailto:liamhe@gmail.com)

IHYC Website: <https://www.indianharboryc.com/regattas>

## ADDENDUM A: COURSES

<b>COURSE</b>	<b>ROUNDING MARKS</b>	<b>MARKS LEFT TO PORT (P) OR STARBOARD (S)</b>	<b>COURSE</b>	<b>ROUNDING MARKS</b>	<b>MARKS LEFT TO PORT (P) OR STARBOARD (S)</b>
A	B X	P	NT	X B T B	P
AT	B X T X	P	O	X L B	P
B	B V X	P	OT	X L B T B	P
D	A V	P	P	Y B	P
E	A V W	P	R	W A	P
F	A W	P	RT	W A T A	P
FT	A W T W	P	S	W V A	S
G	PL	S	ST	W V A T A	S
GT	PL T P	S	U	Y P	P
H	UL	S	UT	Y P T P	P
HT	UL T U	S	V	Y U	P
J	LV	P	VT	Y U T U	P
K	LP	P	W	Y L P	P
KT	L P T L	P	X	V L	P
L	LU	P	XT	V X L T L	P
LT	L U T L	P	Z	V P L	S
M	J V	P	ZJ	V J	P
N	X B	P			

## ADDENDUM B: MARKS



- (1) Red Rock buoy & Newfoundland Reef buoy are deemed to be marks of the course and shall be passed to the south
- (2) Hen & Chickens Can C-1A is deemed to be a mark of the course and shall be passed to the north

MARK	DESCRIPTION	MARK	DESCRIPTION
A	Bell "G-1", Little Captain Island Reef	U	Special IHYC mark NNE of Great Captain Island Light
B	Red Nun "2", Flat Neck Point	V	Special RYC mark west of Sugar Boat
J	Special IHYC mark off Calf Island	W	Special RYC Mark 1/4 mi ENE of Red Rock
L	Red Nun "2", Greenwich Harbor	X	Special IHYC mark SW of Tweed Island
P	Special RYC Mark north of Wee Captain Island	Y	Special mark approximately 1/2 mi. to windward of Start
T	Start/finish mark		

## **ADDENDUM C: Pursuit Starting Times**

TBD based on registration