



2014 Corsair US Nationals & Rendezvous
Organizing Authority:
Inter-Lake Yachting Association



Hosted by:
Put-in-Bay Yacht Club
July 31 - August 3, 2014

SAILING INSTRUCTIONS

1 RULES

- 1.1 The regatta will be governed by the rules as defined in the current *Racing Rules of Sailing* (RRS).
- 1.2 Boats not racing one-design will be scored using GLMRA ratings.
- 1.3 US Sailing Prescriptions to RRS 60.3, 63.2 and 63.4 will not apply.
- 1.4 In the event of a conflict between the NOR and these sailing instructions, the sailing instructions shall prevail. *This changes RRS 63.7*

2 NOTICES TO COMPETITORS AND INFORMATION MEETING(S)

- 2.1 Any notices to competitors pertaining to Race 1 (the Port Clinton Yacht Club (PCYC) to Put-In-Bay distance race) will be posted on the event page of YachtScoring.com only.
- 2.2 Any notices to competitors pertaining to other races will be posted on the official notice board, located on the Put-in-Bay Yacht Club (PIBYC) front windows by the patio bar as well as the event page of YachtScoring.com.
- 2.3 There will be a competitors' meeting at 1900 hrs Wednesday, July 30 at PCYC.

3 CHANGES TO SAILING INSTRUCTIONS

Any change to the sailing instructions will be posted at 0730 on the day it will take effect, except that any change in the schedule of races will be posted by 2000 on the day before it will take effect or within one hour after the Race Committee (RC) signal boat docks, whichever is later.

4 SIGNALS MADE ASHORE

- 4.1 Signals made ashore will be displayed from the yardarm on the PIBYC pier. Signals may be duplicated from the RC signal boat in the harbor.
- 4.2 When flag AP is displayed ashore, "1 minute" is replaced with "not less than 60 minutes" in race signal AP. *This changes race signals AP.*

5 SCHEDULE OF RACES

- 5.1 Racing is scheduled for July 31 - August 3.
- 5.2 Race 1 shall be a distance race from Port Clinton YC to Put-In-Bay. The first warning signal for that race will be 0955 hrs on July 31. Additional races may follow Race 1 in the East Racing Area (See Attachment 1) if all boats have finished Race 1 by 1400 hrs.
- 5.3 The first warning signal on each subsequent day of the event shall be 0925 hrs.
- 5.4 The race committee will attempt to run as many races as possible on each day, conditions permitting. There is no maximum number of races.
- 5.5 No warning signal shall be made after 1130 hrs on Sunday, August 3.
- 5.6 Flag "A" displayed with no sound while boats are finishing means 'No more racing today.'

6 CLASS FLAGS AND INITIAL ORDER OF START

A description of the class flags and starting order will be posted on YachtScoring.com and the official notice board no later than 2000 hrs on Wednesday, July 30.

7 RACING AREA

Race 1 will start just offshore the Port Clinton Yacht Club and finish near Put-In-Bay.

Subsequent races will take place in the Put-In-Bay east racing area which will be in the waters of Lake Erie in an area generally between South Bass, Middle Bass, North Bass, and Ballast Island. See Attachment 1.

8 THE COURSES

8.1 The diagrams in Attachments 1 and 2 show the course areas and courses to be sailed. Navigational coordinates are approximate and variations to actual positions shall not be grounds for redress. *This changes RRS 62.*

8.2 No later than the preparatory signal, the RC signal boat shall display on its starboard side the designated course on a placard and may display the approximate compass bearing and distance of the first leg. *This changes RRS 27.1.*

8.3 If Mark C (the gate) is a single mark, it shall be left to port.

9 MARKS

9.1 Race 1 – see Attachment 2 for mark descriptions.

9.2 For courses 1 and 2, see Attachment 2 for mark descriptions.

9.3 For courses 3, 4, 5, and 6:

(a) Marks 1 and 3S/3P (the gate) will be **orange** inflatable marks.

(b) The Mark 2 (the offset) will be a **small orange** inflatable mark.

(c) New marks, as provided in instruction 11, will be **yellow** inflatable marks

9.4 The starting and finishing marks will be **yellow** inflatable marks.

10 THE START

10.1 The starting line will be between a staff displaying an **orange** flag on the signal boat and the course side of the mark as described in instruction 9.4.

10.2 A boat starting later than four (4) minutes after her starting signal will be scored DNS without a hearing. *This changes RRS A4.*

11 CHANGE OF THE NEXT LEG OF THE COURSE

11.1 To change the position of the next mark, the race committee will lay a new mark (or move the finishing line) and remove the original mark as soon as practicable. When in a subsequent change a new mark is replaced, it will be replaced by an original mark.

11.2 If there is a significant wind shift during the starting sequence, the Race Committee may signal a change of course for a class as follows: A postponement may be signalled to allow the Race Committee to reset the line. Code Flag C will be displayed. The magnetic bearing of the new weather mark will be displayed and attention to the change of course will be made by short sound signals. The new Mark 1 will be **yellow**, but after a second change during the race, the changed mark will be **orange**. Code Flag C will continue to be displayed to each class for whom the **yellow** Mark 1 applies.

12 THE FINISH

12.1 For Race 1, please refer to Attachment 2

12.2 For all races other than Race 1, the finish line will be between a staff displaying an orange flag on the signal boat and the course side of the mark as described in instruction 9.4.

13 TIME LIMITS

- 13.1 The time limit for Race 1 is eight (8) hours.
- 13.2 The time limit is five (5) hours for courses 1 and 2 and three (3) hours for courses 3, 4, 5 and 6. Any boat not finished within the time limit will be scored DNF without a hearing. *This changes RRS 35 and A5.*
- 13.3 When sailing courses 1 or 2, boats finishing more than 90 minutes after the first finisher in its class will be scored TLE (Time Limit Expired) without a hearing. *This changes RRS 35 and A5.*
- 13.4 When sailing courses 3, 4, 5 or 6, boats finishing more than 30 minutes after the first finisher in its class will be scored TLE without a hearing. *This changes RRS 35 and A5.*
- 13.5 On courses 3, 4, 5 and 6, if no boat reaches the first mark within an hour after her start, the race shall be abandoned.
- 13.6 Boats receiving a score of TLE shall be scored points for the finishing place one more than the number of boats entered in the her class. *This changes RRS A4.2.*

14 PENALTY SYSTEM

For multihull classes, the Two-turns penalty is replaced with the One-turn penalty. *This changes RRS 44.1.*

15 PROTESTS AND REQUESTS FOR REDRESS

- 15.1 Protest forms are available at the PIBYC Race Office. Protests and requests for redress shall be delivered there within the protest time limit.
- 15.2 The protest time limit is sixty (60) minutes after the race committee boat docks after the last race of the day or 1500 hrs, whichever is later.
- 15.3 Protest notices will be posted no later than thirty (30) minutes of the protest time limit to inform competitors of hearings in which they are parties or named as witnesses. Hearings will be held in the protest room, the location of which shall be posted on the official notice board, beginning at the time posted on the official notice board.
- 15.4 Protests by the RC or Protest Committee will be posted to inform boats under RRS 61.1(b).
- 15.5 Alleged breaches of instructions 10.2, 13, 17, 18, 20 and any class rule requiring class membership will not be grounds for a protest or a request for redress by a boat. *This changes RRS 60.1.* Penalties for these breaches may be less than disqualification if the protest committee so decides, in which case they will be scored as “discretionary penalty imposed” (DPI). *This changes RRS A11.*
- 15.6 On the last scheduled day of racing, a request to reopen a hearing shall be delivered (a) within the protest time limit if the party requesting reopening was informed of the decision on the previous day; or (b) no later than 30 minutes after the party requesting reopening was informed of the decision on that day. *This changes RRS 66*
- 15.7 On the last scheduled day of racing a request for redress based on a PC decision shall be delivered no later than 30 minutes after the decision was posted. *This changes RRS 62.2.*

16 SCORING

- 16.1 One (1) race constitutes a series.
- 16.2 A boat’s series score shall be the total of her race scores, with no races excluded. *This changes rule A2.*

17 SAFETY REGULATIONS

- 17.1 Before the start of the first race of the day, and after any postponement ashore, competitors are requested to sail past the stern of the signal boat on starboard tack and hail their sail numbers to check in.
- 17.2 A boat that retires from a race shall notify the race committee as soon as possible.

18 REPLACEMENT OF CREW OR EQUIPMENT

- 18.1 Substitution of competitors beyond the final entry list will not be allowed without prior written approval of the race committee.
- 18.2 Substitution of damaged or lost equipment will not be allowed unless authorized by the race committee. Request for substitution shall be made to the committee at the first reasonable opportunity.

19 EQUIPMENT AND MEASUREMENT CHECKS

The Organizing Authority reserves the right to spot check any competing boat or team at any time for compliance with class rules.

20 RADIO COMMUNICATION

- 20.1 Except in an emergency and as permitted under Instruction 17.2, a boat while racing shall neither make nor receive radio communications not available to all boats. This restriction applies also to mobile telephones and other portable devices.
- 20.2 An unofficial designated observer may report via VHF radio all visual signals displayed by the Race Committee. Information reported by the designated observer is provided as a courtesy to competitors and does not in any way alter the competitor's responsibility to observe the Race Committee's visual signals, which govern the conduct of the racing.
- 20.3 Course specific VHF frequencies which will be used by the RC will be posted on the official notice board and on YachtScoring.com.

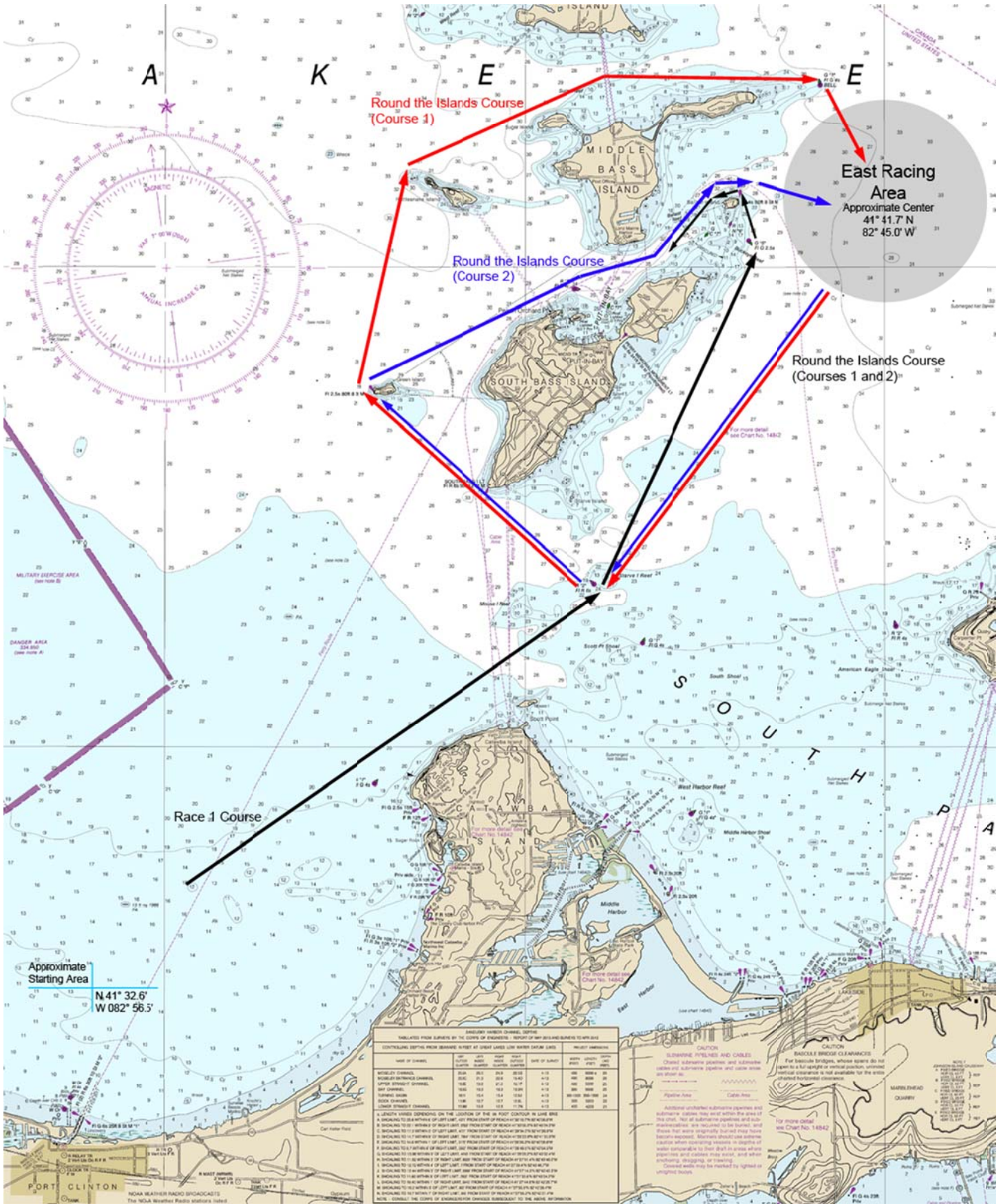
21 AWARDS

- 21.1 Awards will be given to the first three places in each division.
- 21.2 Daily firsts will be given to the first place finisher in the first race for each division.

22 DISCLAIMER OF LIABILITY

Sailing is an activity that has inherent risk of damage and injury. Competitors in this event are participating entirely at their own risk. See RRS 4: "decision to race." The Race Organizers (Organizing Authority, Race Committee, Protest Committee, host club, sponsors or any other organization or official) will not be responsible for damage to any boat or other property; or injury to any competitor, including death, sustained as a result of participation in this event. By participating in this event, each competitor agrees to release the race organizers from any and all liability associated with such competitor's participation in this event to the fullest extent permitted by law.

ATTACHMENT 1 RACING AREAS



ATTACHMENT 2

THE COURSES

RACE 1 AND ROUND THE ISLANDS COURSES (Courses 1 and 2)

Mark Descriptions

Designation	Description	Coordinates (approx.)
Mark 1	Orange tetrahedron	Approx. 1 mile upwind of start
G	Starve Island Reef Light R2	41° 36.692' N 82° 49.388' W
B	Buckeye Reef Buoy G5	41° 40.272' N 82° 46.898' W
Green Island	Island	41° 38.702' N 82° 52.070' W (light location)
Mark 2	Yellow tetrahedron, set west of the Rattles	41° 40.982' N 82° 51.828' W (approximate)
Sugar Island	Island	41° 41.520' N 82° 49.560' W (center of island)
M	Middle Bass Island East Shoal G1	41° 41.903' N 82° 45.912' W
Ballast Island	Island	41° 40.714' N 82° 47.043' W (light location)

- Mark 1 will be an inflatable orange mark set directly to weather, approximately 1.0 nm away from the starting line.
- No later than the warning signal, the RC will display a placard to indicate the Mark 1 rounding direction: **Red Square** – Mark 1 is to be left to **PORT**; **Green Triangle** – Mark 1 is to be left to **STARBOARD**

Race 1 – Start – Mark 1 – G – B – Ballast Island - Finish

- All marks left to **PORT** (with the exception of Mark 1 as noted above).
- The starting area will be approximately at N 41° 32.6', W 082° 56.5', in Lake Erie approximately 1.5 nm north of Port Clinton YC.
- The finish line shall be between two Orange buoys located (on a north-south line) between Middle Bass and South Bass Islands.
 - The inner buoy will be placed approximately 500 feet from the shore of South Bass Island at approximately 41° 39.818' N, 82° 48.488' W.
 - The outer buoy will be placed approximately 500 feet north of the inner buoy at approximately 41° 39.905' N, 82° 48.497' W.
 - All boats shall finish between the two buoys keeping the inner buoy to port and the outer buoy to starboard.
- Finish line sightings will take place from a trailer flying an RC flag on the shore of South Bass Island, south of the inner buoy. Be positive you are properly identified as you finish.
- **Competitors are strongly cautioned to avoid the shoals between Ballast Island and South Bass Island.**

Course 1 – Start – Mark 1 – G – Green Island – Mark 2 – Sugar Island – M – Finish

- All marks left to **STARBOARD** (with the exception of Mark 1 as noted above). Start and finish will be within the East Racing Area.

Course 2 – Start – Mark 1 – G – Green Island – Ballast Island – Finish

- All marks left to **STARBOARD** (with the exception of Mark 1 as noted above). Start and finish will be within the East Racing Area. **Competitors are strongly cautioned to avoid the shoals between Ballast Island and South Bass Island.**

ATTACHMENT 2

THE COURSES (continued)

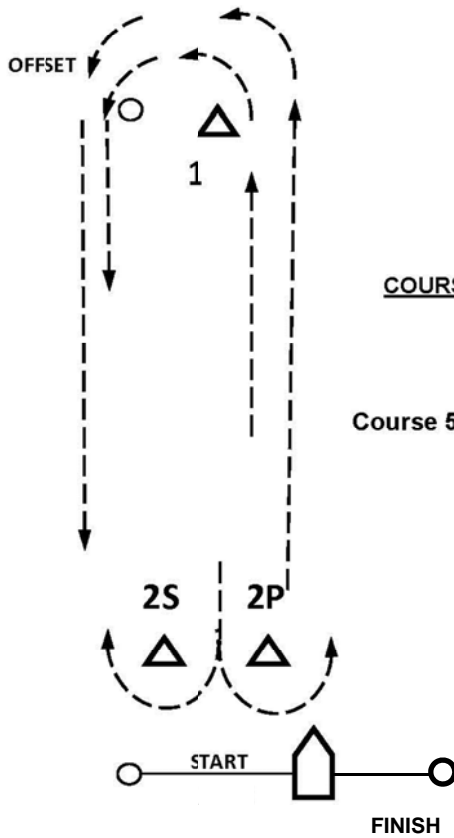
If there is only one leeward mark (Mark 2), it shall be left to port.

COURSE 4 and 6 DIAGRAM and ROUNDING ORDER (Not to Scale)

Course 4: START – 1 – Offset – 2P/2S – 1 – Offset – FINISH
(2 laps / 4 legs, downwind finish)

Course 6: START – 1 – Offset – 2P/2S – 1 – Offset – 2P/2S – 1 – Offset – FINISH
(3 laps / 6 legs, downwind finish)

Mark 2 may be either a gate or a single mark



COURSE 3 and 5 DIAGRAM and ROUNDING ORDER (Not to Scale)

Course 3: START – 1 – Offset – 2P/2S – FINISH
(1 ½ laps / 3 legs, upwind finish)

Course 5: START – 1 – Offset – 2P/2S – 1 – Offset – 2P/2S – FINISH
(2 ½ laps / 5 legs, upwind finish)

Mark 2 may be either a gate or a single mark

