



**SHELTER ISLAND YACHT CLUB
HERRESHOFF 12 ½ FOOT CLASS
SAILING INSTRUCTIONS 2014
June 21, 2014**

1. RULES

All races shall be sailed under the Racing Rules of Sailing 2013-2016 (Rules) adopted by the US Sailing Association (USSA), as amended in 2014, these Sailing Instructions, and the June 21, 2014 Skippers' Meeting. The Shelter Island Yacht Club shall have the authority to interpret these Rules and Instructions, subject to ELISA and USSA appeal procedures.

2. NOTICE TO COMPETITORS

Notices will be posted on the H-12 ½ bulletin board on the porch near the water cooler.

3. CHANGES TO THE SAILING INSTRUCTIONS

Any changes in the Sailing Instructions will be posted on the H-12 ½ bulletin board before 1200 hours on the day that they will take effect.

4. SIGNALS MADE ASHORE

Signals made ashore will be hoisted on the Club flagpole. Code Flag "AP" (answering pennant), with two guns, (one gun upon lowering) means: "The race is postponed. Do not leave the harbor area". The Warning Signal for the class in the racing area shall be one (1) hour from the lowering of "AP" or sooner if the class has completed assembly in the starting area.

5. RACING SCHEDULE

Racing shall be held on each Saturday, June 21, through August 30, 2014 at 1400 hours. The Ricketson Russell Memorial Trophy Race shall be held on Sept. 1, 2014 at 1100 hours and H-Class Association Race will be held on Sept. 6, 2014 at 1400 hours. Sunday, July 27, 2014 and Sunday, August 24, 2014, with races to be at 1200 hours, will be designated as "make-up days", to be used if only 3 race days for the July series or 7 race days by August 24th have been raced, and shall be noticed on the H-12 ½ bulletin board no later than 1600 hours on the previous Saturday. Dates for any other races will be announced during the season. For Trophy Races, unless it is a Channel Race, the first race of the day shall be the Trophy Race, unless otherwise designated by the Race Committee.

6. STARTING AREA

The area will be designated on the H-12 ½ bulletin board and posted before 1200 hours on the day of the race.

7. COURSES

The courses will either be selected from marks referenced on Course Sheet Side "A" or courses as diagrammed on Course Sheet Side "B". A windward offset mark and leeward gate may be set.

8. THE START

Races will be started using Rule 26 which states:

"Races shall be started by using the following signals. Times shall be taken from the visual signals; the absence of a sound signal shall be disregarded."

<i>Signal</i>	<i>Flag and sound</i>	<i>Minutes before starting signal</i>
Warning	Class flag; 1 sound	5
Preparatory	P,I,Z,Z with I, or black flag; 1 sound	4
One-minute	Preparatory flag removed, 1 long sound	1
Starting	Class flag removed; 1 sound	0

9. STARTING LINE

The starting line will be **between a staff displaying an orange flag on a Committee Boat or North Pier and the starting mark.**

10. RECALLS

Display of **code flag "X" and one long sound signal immediately after the Starting Signal** means: one or more boats have started prematurely. It is the responsibility of each boat to make a proper start. A **general recall** will be signaled by the display of **code flag 'First Substitute' and two long sound signals** immediately after the Starting Signal is made. The new Preparatory signal will be made one minute after removal of the recall signal. OCS boats will be announced by VHF radio. However, failure by a boat to hear or see recall notification and the timing or order of such hails shall not be grounds for redress or protest.

11. POSTPONEMENT

Hoisting of **"AP" and two sound signals.** Upon lowering of "AP" one sound signal. Warning Signal or other signal will be made one minute after lowering. "AP" over "A" means no more racing today.

12. ABANDONMENT

In accordance with Rule 32.1

13. SHORTENING COURSE

In accordance with Rule 32.2

14. FINISH

The finishing line will be **between a staff displaying an orange flag on a Committee Boat or North Pier and the finishing mark.** After finishing a race boats shall stand by for instructions from the Race Committee, clear of the finishing line and the final leg of the course.

15. TIME LIMIT

Subject to special fleet instructions the time limit for each race will be **two and one-half hours**, or thirty minutes after the finish of the first boat, whichever is later. Boats not finishing within the time limit will be scored "DNF".

16. PROTESTS

A boat wishing to protest must comply with the PROTEST REQUIREMENTS of Paragraph 61 of the Rules, except Rule 61.1 (a) is hereby amended to require **the display of a red flag** at the first reasonable opportunity.

Standard forms available in the Club business office should be completed and lodged with a representative of the Race Committee or Protest Committee within one hour after the Race Committee boat returns to the dock at the conclusion of that day's racing, or the finish of the last race, whichever is later. The Rules concerning 360 and 720 degree turns for exoneration from fouls shall apply.

The Protest Committee will hear protests in approximately the order of receipt. Protest hearings will be scheduled at the discretion of the Protest Committee, at times which will be posted on the racing bulletin board.

17. SCORING

Scoring shall be the low point system. 1st place receives 1 point, 2nd 2 points, 3rd three points, etc. Every race will be counted equally. Glasses will be awarded (1st through 5th) for each race day, based on low points for the day. If boats are still tied after all possible tie-breakers have been exhausted, the Race Committee will decide by coin flip. In any race, DNF will be scored one point more than the number of finishers and DNC will be scored one more point than the number of starters. Throw-outs for the season as per Appendix A, based on total number of races.

18. FLEET CHAMPIONSHIP (Season)

70% of Fleet Championship Race Days must be sailed to qualify. (Ricketson Russell and H 12 ½ Class Association not included) Throw-outs will be allowed as per Appendix A. 5 awards.

19. JULY SERIES

75% of June and July Race Days through July 26th must be sailed to qualify. Those placing 1st through 4th for the Fleet Championship do not qualify. Throw-outs will be allowed as per Appendix A. 3 awards.

20. AUGUST SERIES

75% of August Race Days must be sailed to qualify. Those placing 1st through 4th for the Fleet Championship and 1st through 3rd for July Series do not qualify. Throw-outs will be allowed as per Appendix A. 3 awards.

21. CREWS

Series Races: Skipper alone or skipper and crew. More than one crew allowed provided total weight of skipper and crew does not exceed 500 pounds.

Trophy Races: Skipper plus crew to qualify for Trophy. More than one crew allowed provided total weight of skipper and crew does not exceed 500 pounds. If boat is single-handed, boat will be scored for the series but not for the Trophy.

Note: Deed of gift provides crew in Ricketson Russell must be an adult.

22. BOATS AND SKIPPERS, LOCAL RULE CHANGES

We place the boat, not the skipper or owners. (This allows the boat to compete with multiple equal owners and/or if the owners are not available.) An H-12 1/2 must be able to qualify for membership in the H-Class Association to be eligible to race. No vang. Spinnakers only in designated races which shall not count toward the Series Championship. No GPS. No dry sailing. No extension tillers.

23. NATIONAL CHAMPIONSHIP

Any skipper who races in the National Championship on August 9 and 10 shall receive his average score for any races missed that week-end. Average score shall be determined by dividing total score for all races raced up to that date by the number of races raced and rounding to the nearest whole number. (An exact .5 would go up rather than down, i.e.: a 3.5 average score would become 4.) Other boats scores would remain the same, and thus 2 boats could receive 4's for races on August 9.

Skipper must be a member or guest of SIYC and H-12 1/2 Fleet. Guest skippers who are not members of SIYC should have an active SIYC Guest card and have the approval of the majority of previous years Fleet Championship qualifying skippers. These skippers are eligible for day trophies but their results will not be calculated in Series or Trophy races. It is up to the Guest Skipper's sponsor to see that these requirements are met.

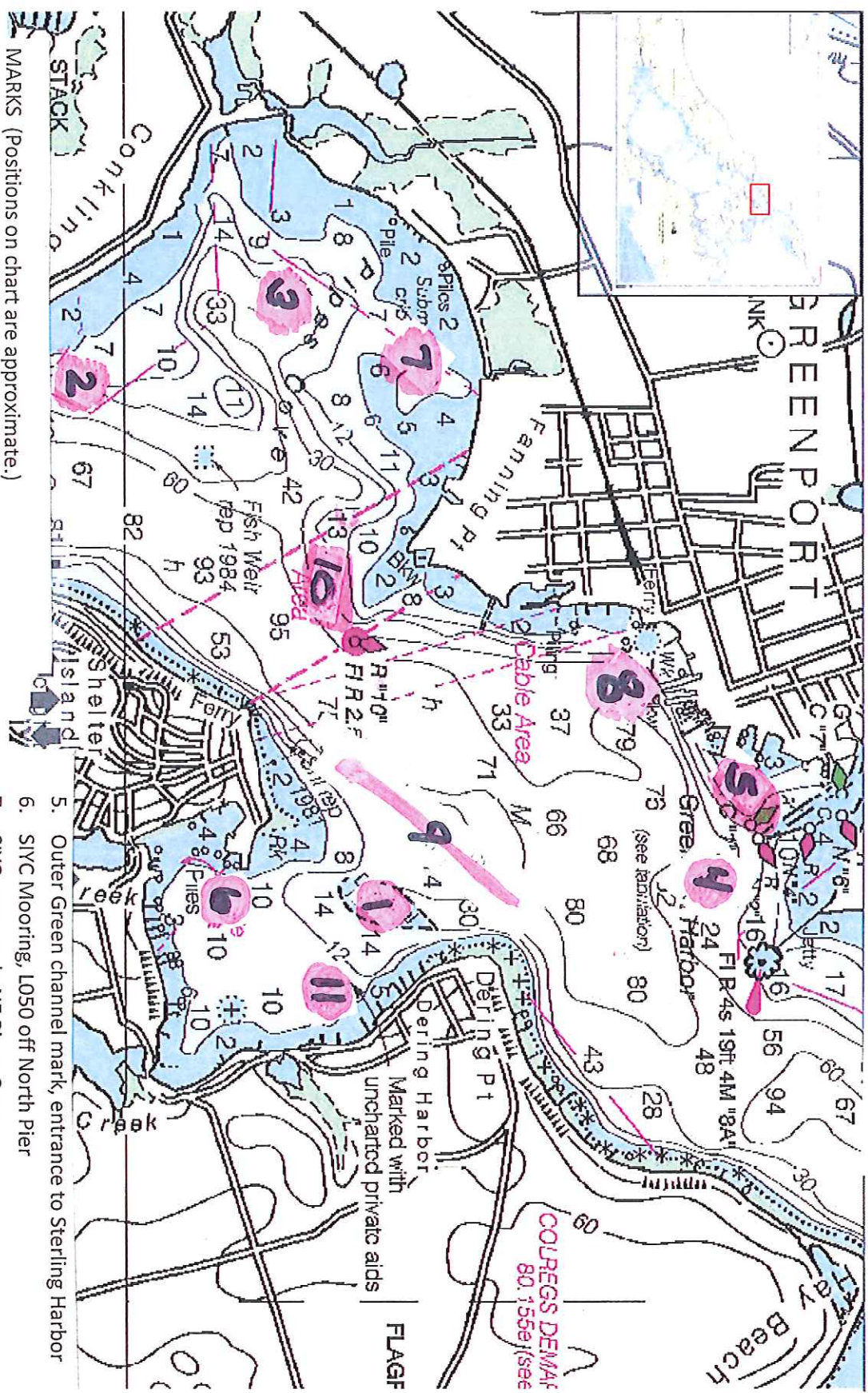
APPENDIX A

Season Series and July Series and August Series

RACES	THROW-OUTS
1-5	1
6-8	2
9-11	3
12-14	4
15-18	5
19-21	6
22-24	7

If not posted to the contrary, Channel Races will start in the vicinity of Mark #1.

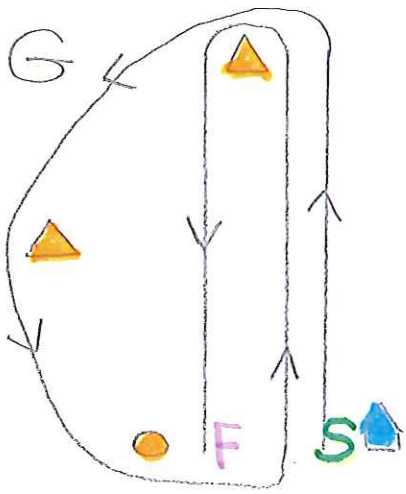
Race Committee will post course either on the official H 12 bulletin board or on a white board located on the transom of the committee boat.



MARKS (Positions on chart are approximate.)

1. Large white cylinder, Mooring Area, mark as designated at Skipper's meeting
2. SIYC race mark, SW Pipes Cove
3. SIYC race mark, Western middle of Pipes Cove
4. Large white mark off Greenport breakwater
5. Outer Green channel mark, entrance to Sterling Harbor
6. SIYC Mooring, L050 off North Pier
7. SIYC race mark, NE Pipes Cove
8. SIYC race mark, off Claudio's dock
9. SIYC race mark, vicinity mouth of harbor
10. Flashing Red 10
11. SIYC Mark, east side of Dering Harbor

COURSE SHEET "SIDE B"



- Committee Boat 
- Orange buoy 
- Tetrahedron 
- Offset mark 

- Start 
- Finish 

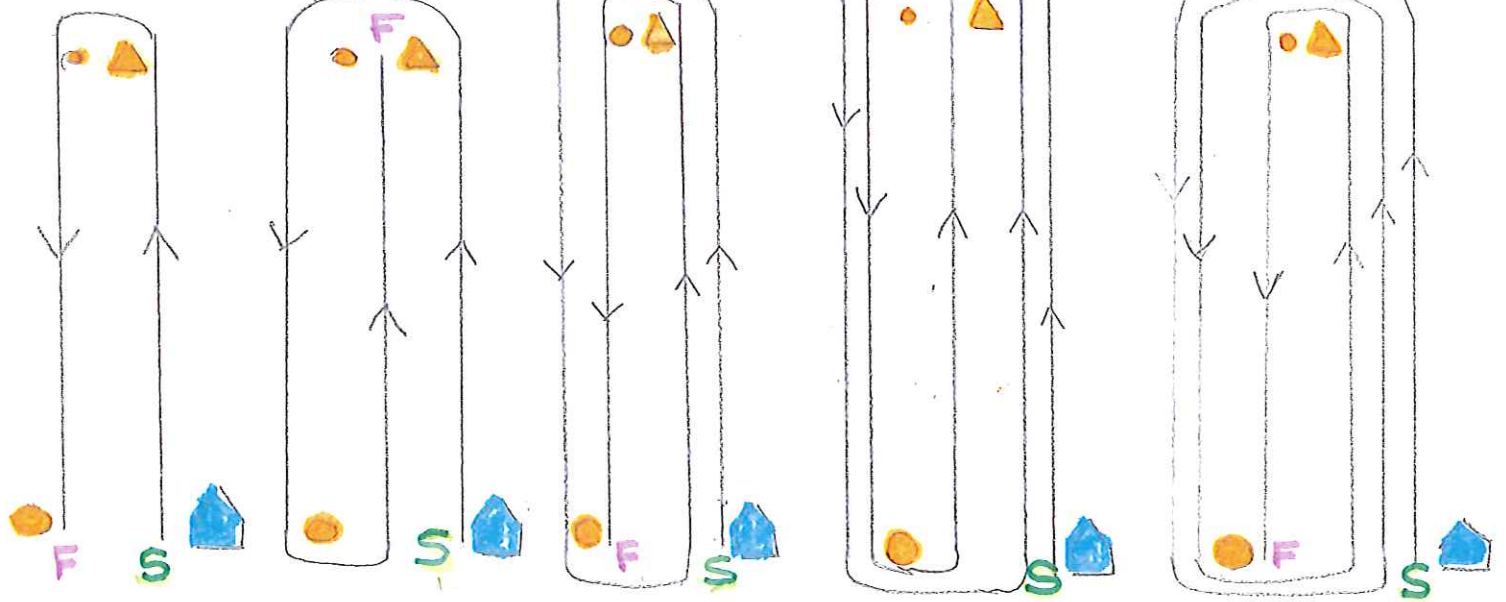
W2

W3

W4

W5

W6



All marks will be rounded on the same side as the starting mark is passed. The finish will be between an orange buoy or tetrahedron and the committee boat. Courses will be displayed by a white flag with the appropriate letter and a flag with a number designating the number of legs to be sailed. For example, W 2 signals a windward/leeward course sailed to windward, leeward and finish. W 4 signals windward, leeward, windward, leeward and finish etc.

Upwind finishes will be between a Race Committee boat and an orange tetrahedron or orange buoy.

LAST RACE INSTRUCTIONS AND OPTIONS

For the last race of the day, the Race Committee will signal one of the following courses:

If "T", sail a windward leg before sailing the designated option.

If "J", sail windward, leeward, windward before sailing the designated option.

OPTION 1: leave Mark #10 (FR 10 on side A of course sheet) to starboard, leave Mark #4 (on side A of course sheet) to starboard and finish off North Pier.

OPTION 2: leave Mark #10 (FR 10 on side A of course sheet) to starboard, leave Mark #1 (on side A of course sheet) to starboard and finish off North Pier.

The finish line will be between a flag on the northeast corner of North Pier and Mark #6 (on side A of course sheet).