



2014 Melges 20 National Championship

SAILING INSTRUCTIONS

The Organizing Authority (OA) is Sail Newport in coordination with the International Melges 20 Class Association.

1. RULES

- 1.1 The 2013 International Audi Melges 20 U.S. National Championship will be governed by the rules as defined in the current Racing Rules of Sailing (RRS).
- 1.2 The International Audi Melges 20 Class Rules (IAM20CR), including Part 3, Section I (EVENT RULES), will apply except as specifically changed in the Notice of Race (NOR) or in the Sailing Instructions (SIs).
- 1.3 These Sailing Instructions (SI's), including amendments, will take precedence in the case of a conflict with the Notice of Race (NOR). This changes RRS 63.7.
- 1.4 The Equipment Rules of Sailing (ERS) will apply.
- 1.5 For the purposes of RRS 43.2, the anti-hiking strap does not constitute a lifeline.
- 1.6 RRS 42.3(c) is modified to allow the gennaker sheet to be pumped without restriction to promote surfing or planing.
- 1.7 IAM20CR I.2 (SAIL LIMITATION MARKS) will apply.
- 1.8 Competitor advertising shall conform to the current ISAF Regulation 20 and Class Rules. Boats may be required to display identification numbers and sponsors advertising for the duration of the event in accordance with ISAF Regulation 20.4. These items will be supplied free of charge by the organizing authority (OA) at registration.

2. RADIO COMMUNICATION

- 2.1 All competing boats shall carry a hand held VHF radio capable of transmitting and receiving VHF channels (US) for safety purposes and Race Committee communication.

- 2.2 The Race Committee's VHF channel will channel 69.
- 2.3 Race Committee broadcasts concerning its intentions, the course to be sailed; starting times, course changes, OCS hails, etc. are a courtesy only. Failure of the Race Committee to make a broadcast, the timing of a broadcast, or the failure of a boat to hear a broadcast shall not be grounds for redress under rule 62.1(a).
- 2.4 Except from the specified Race Committee VHF channel, no competitor shall make or receive radio or cell phone communications commencing from the first Warning Signal of the day until the conclusion of the day's racing for that competitor, except in the case of an emergency.
- 2.5 In the event of an onshore Postponement, the Race Committee shall make update announcements on the Race Committee VHF radio channel.

3. NOTICES TO COMPETITORS

- 3.1 Notices to competitors will be posted on the official notice board located at Sail Newport's Waterfront Center.

4. CHANGES TO SAILING INSTRUCTIONS

- 4.1 Any changes will be posted by 0900 on the day they will take effect, except that any changes in the Schedule of Races will be posted no later than one (1) hour after the latest protest time limit on the day before they take effect (SI 16.2). In the event of no racing on a day, any changes in the Schedule of Races will be posted no later than 1700 hours on the day before they take effect.
- 4.2 Oral changes to the Sailing Instructions may be given on the water. The Race Committee Signal Boat shall display Code Flag "L" and announce the change on the Race Committee VHF Channel in accordance with rule 90.2(c). Competitors may also approach the Signal Boat and verbally receive the change while Code Flag "L" is displayed.

5. SIGNALS MADE ASHORE

- 5.1 Signals made ashore will be displayed from the Sail Newport Waterfront Center flagpole.
- 5.2 Code Flag "L", when displayed ashore signifies that a change in Sailing Instructions or other notice to competitors has been posted on the Official Notice Board.
- 5.3 Code Flag "AP" when displayed ashore means that the start has been postponed. The Warning Signal will be made not less than 60 minutes after the lowering of this signal.
- 5.4 Code Flag "N" over "A" and 3 sounds when signaled ashore means that all racing is abandoned for today.

6. SCHEDULE

- 6.1 The Skipper's Meeting will be at Sail Newport at 1730 on Wednesday, August 20.
- 6.2 Racing is on August 21, 22, 23, 2014 - Up to 8 races are scheduled
- 6.3 The scheduled time for the Warning Signal for the first race each day is 1100 hours.
- 6.4 The Race Committee Finishing Boat will signal its intent to start another race that day by displaying Code Flag "R" at the finish of a race. Code Flag "R" will be lowered with one

sound, one minute before the next Warning Signal is made.

- 6.5 On the final day of the regatta, the Initial Warning Signal for the final race will not be made after 1400 hours. However, after this Initial Warning, any Warning Signal that follows one or more General Recalls may occur after 1400.

7. RACING AREAS

- 7.1 Racing will take place in one of three areas listed in "Attachment A: Venue". The Race Committee will post the chosen location on the Official Notice Board and announce via VHF prior to departing the dock.

8. THE COURSES

- 8.1 Courses are described below and in "Attachment B: Course Illustrations".
- 8.2 Course Designation: "Start - W - OS - Leeward Gate - W - OS - Finish"
- 8.3 The Windward Mark (W) and the accompanying offset mark (OS) shall be left to port.
- 8.4 Courses will be posted on a Race Committee Signal Boat course board prior to the Warning Signal of each race. The approximate magnetic compass bearing and distance from the starting line to the first mark will be displayed. (This changes RRS 27.1)

9. MARKS

- 9.1 The original Windward Mark (W) will be a yellow inflatable mark.
- 9.2 The windward offset mark (OS) will be a yellow inflatable mark. The offset mark will be laid to port of the Windward Mark, approximately 175 feet away.
- 9.3 A Leeward Gate will be used and the original Leeward Gate will be yellow inflatable marks.
- 9.4 When changing the next leg of the course (NOR Section 12), the new mark, unless the change is for the final leg of course, will be an orange inflatable mark(s).
- 9.5 Except when there is a change of course, the Gate will be located to windward of the Starting Line. Boats shall sail between the Gate marks from the direction of the previous mark and round either Gate mark.
- 9.6 If one of the Leeward Gate marks is missing, boats shall round the one existing leeward mark to port.

10. THE START

- 10.1 Races will be started in accordance with RRS 26.
- 10.2 The class flag will be the Audi Melges 20 Insignia on a white flag.
- 10.3 The starting line will be between a staff displaying an orange flag on the Race Committee Signal Boat and a yellow inflatable mark.
- 10.4 An inflatable buoy may be tethered to the stern of the committee boat(s) and will function as an extension of the Race Committee boat. Boats shall not pass between the Race Committee vessel and an inflatable buoy tethered to it.
- 10.5 A boat starting later than four (4) minutes after her starting signal will be scored Did

Not Start (DNS) without a hearing. (This changes RRS A4.1)

11. RECALLS

- 11.1 In the event of an individual recall, the sail numbers, bow numbers or identification of any boat or boats that are identified as OCS may be announced on the Race Committee VHF channel. Failure of a boat to see or hear her recall notification, and the timing and order of such hails, or the length of time it takes to make a notification on the Race Committee VHF channel will not be grounds for redress. (This changes RRS 62.1 (a).)
- 11.2 The Race Committee may hail the bow numbers or sail numbers of boats that are over the line in the last one (1) minute of the starting sequence after the I and/or Z Flag has been lowered. Failure of a boat to hear her recall notification, and the timing and order of such hails will not be grounds for redress. (This changes RRS 29.1 and 62.1 (a).)

12. CHANGING THE NEXT LEG OF THE COURSE

- 12.1 If the change is for a windward leg, the new mark will be an orange inflatable mark.
- 12.2 If the change is for a leeward leg, the new gate marks will be orange inflatable marks, unless the first change is for the final leg of the course, which in that case, the finish line will be in the new position.
- 12.3 The Race Committee will attempt to broadcast any course changes over the Race Committee VHF channel.

13. FINISH

- 13.1 The Finish Line for leeward finishes will be on the opposite side of the Race Committee Boat from the Starting Line. The Finish Line will be between a staff displaying an orange flag on a Race Committee Boat and a nearby inflatable mark.

14. PENALTY SYSTEM

- 14.1 RRS 44.1(a) and 44.2 are changed as so the penalty shall be a one turn penalty including one tack and one gybe, except within 3 boat lengths of a mark, the penalty shall be a two (2) turn penalty with each turn including one tack and one gybe.
- 14.2 Unless the course is shortened to finish at the windward mark, penalties within 3 boat lengths of the windward mark or on the offset leg may be delayed and taken as soon as possible on the downwind leg. This changes RRS 44.2.
- 14.3 The penalty, if any, for a violation of a rule other than a rule of RRS Part 2 and rule 31 will be at the discretion of the Protest Committee and may be other than disqualification. This changes RRS 64.1(a).
- 14.4 If a breach of Class Rules is found, penalties shall be at the discretion of the Protest Committee, in consultation with a non-competing Class Representative.

15. TIME LIMITS

- 15.1 Any race in which no boat rounds the first windward mark within 45 minutes, or finishes within two (2.0) hours of the start shall be abandoned.
- 15.2 Boats failing to finish within 30 minutes after the first boat sails the course and finishes will be scored two additional points more than the number of boats that finished within that time. This changes RRS 35 and A4.2.

16. PROTESTS AND REQUESTS FOR REDRESS

- 16.1 A boat intending to protest is requested to notify a Race Committee Finish Boat of its intention and the identity of the protested boat(s) as soon as possible after finishing.
- 16.2 Protest forms will be available at the Jury desk at the Sail Newport Waterfront Center. Protests and requests for redress shall be delivered to the Jury desk within the protest time limit. The time limit is one (1) hour after the Race Committee Finish Boat docks. Protest hearings will be conducted as soon as possible.
- 16.3 Notices will be posted no later than 15 minutes after the protest time limit to inform competitors of hearings in which they are parties to or named as witnesses. It is each boat's sole responsibility to check the Protest Notice Board to see if she is cited in a protest. Should any party fail to appear when called for a hearing, the Protest Committee may proceed in accordance with RRS 63.3(b). Representatives of boats who are parties to hearings and their witnesses shall remain on call in the vicinity of the Regatta desk until excused by the Protest Committee.
- 16.4 On the last day of the regatta a request for reopening a hearing shall be delivered (a) within the protest time limit if the party requesting reopening was informed of the decision on the previous day; (b) no later than 30 minutes after the party requesting reopening was informed of the decision on that day. This changes rule 66.
- 16.5 On the last scheduled day of racing a request for redress based on a protest committee decision shall be delivered no later than 30 minutes after the decision was posted. This changes rule 62.2.
- 16.6 If the RC posts the results on the official notice board before the protest time limit, a request for redress based on being scored OCS, ZFP or BFD shall be made no later than 30 minutes after the protest time limit. This changes the first sentence of rule 62.2
- 16.7 The representative from each yacht who attends the hearing shall be the owner or the Category 1 helmsman. Category 3 sailors are not allowed in the hearing, or to be in contact with the representatives at the hearing per class rules.
- 16.8 Video and photos taken from any support and/or coach boat shall not be used as evidence at protest hearings. This alters RRS 63.6.

17. SCORING

- 17.1 The Low Point Scoring System, as provided in RRS Appendix "A" shall apply, except as changed in this Section of these Sailing Instructions as follows:
- 17.2 When fewer than six (6) races have been completed, a boat's series score will be the total of her race scores. When six or more races have been completed, a boat's series score will be the total of her race scores excluding her worst score. One race is required to be completed to constitute a series.

18. BOW NUMBERS

- 18.1 Each Melges 20 shall have clearly visible bow numbers as provided by the manufacturer and that Bow Number shall be properly registered when entering the regatta and confirmed during registration. Boats failing to properly display bow numbers may be subject to protest by the Race Committee only.

19. LAUNCHING & HAUL OUT REQUIREMENTS

- 19.1 All boats must be in the water by 1700 on Wednesday, August 20.
- 19.2 All boats are to remain in the water for the duration of the regatta except according to the terms, and with permission of the Principal Race Officer or the Regatta Chairman in the event of a required emergency repair.

20. TEAM AND PRIVATE SUPPORT BOATS

- 20.1 Competitors are responsible for the compliance of their support boats with the International Audi Melges 20 Class Rules concerning their activities on the water (Part 3, Section 1.4 (Outside Assistance)).
- 20.2 Support boats are required by the Race Committee to monitor the Race Committee VHF Channel 69 and provide assistance to any competitor in danger if notified to do so by the Race Committee.

21. PRIZES

- 21.1 The top 5 boats overall will receive prizes.
- 21.2 The top three placing All Corinthian sailed boats will receive prizes.
- 21.3 In addition, the following trophies and prizes will be awarded to:
 - a. the best boat that includes in the crew at least one sailor under 21.
 - b. the best boat that includes one female sailor
 - c. the best boat that has an all female crew
 - d. the best boat that has a helmsman under 21 throughout the event
 - e. the best boat that has a Masters helmsman over 60 throughout the event.

22. SAFETY REQUIREMENTS

- 22.1 A boat that retires from a race or does not intend to start a scheduled race shall promptly report this to the Race Committee via hailing or calling on the Race Committee VHF channel, and receive acknowledgement. If this is not possible, she shall promptly report her actions to the Sail Newport staff upon returning to Fort Adams.

23. MEDIA RIGHTS

- 23.1 Each participant shall acknowledge that all media and commercial rights belong exclusively to the organizing authority (OA) and the IAM20CA and shall grant to the OA and IAM20CA the unrestricted right and permission to use and publish any biographical information, text and images arising from the Championship including name, voice, image, likeness, biographical material as well as representations of the boats in any media worldwide (being television, print and digital media), including video footage, for the sole purposes of advertising, promoting, reporting and disseminating information regarding the Audi Melges 20 US National Championship and the participants in the regatta. The OA will exercise these rights in its sole discretion or as it may agree with the event sponsors. Participants shall not reproduce, publicly communicate or distribute images of the race in any way or form without previous authorization from the OA or the IAM20CA.

24. DISCLAIMER OF LIABILITY

- 24.1 Sailing is an activity that carries with it an inherent risk of damage and injury. Competitors participate in this regatta entirely at their own risk and are reminded to pay special attention to RRS 4, Decision to Race. The race organizers, including the OA, Sail Newport, Melges Performance Sailboats, Race Committee, Protest Committee, sponsors, volunteers, or any other affiliated organization or official, will not be responsible for damage to any boat or other property or the injury to any competitor, including death, sustained as a result of practice for or participation in this event on the water or ashore. By participating in this event, each competitor agrees to release the race organizers from any and all liability associated with such competitor's participation in this event to the fullest extent permitted by law.

Sail Newport Regatta Director: Kim Cooper

Principal Race Officer: Bill Canfield

IAM20CA Administrator: Joy Dunigan

ATTACHMENT A

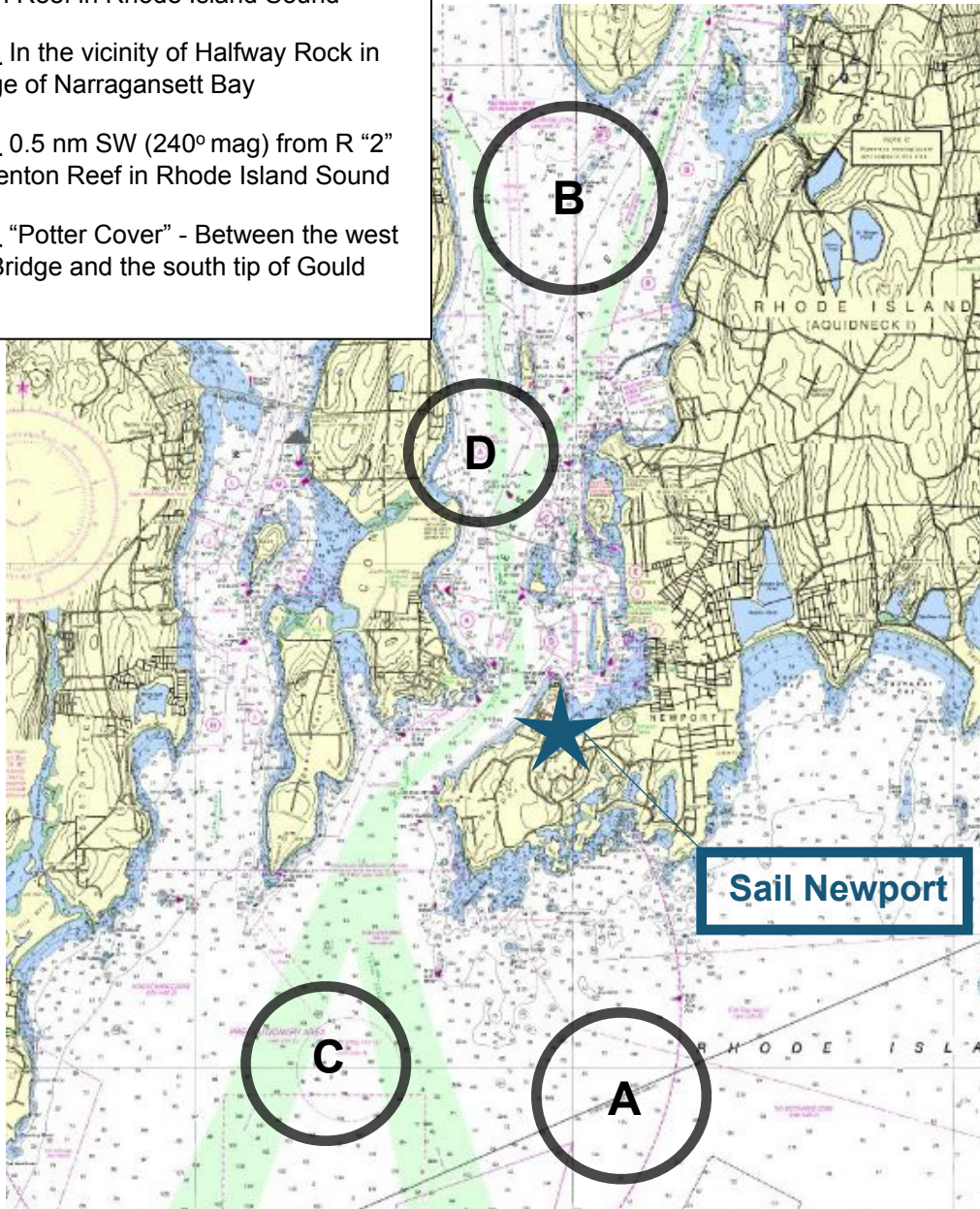
VENUE- Racing Areas

Rendezvous A: 1 nm SE (140° mag) from R “2” Bell South of Brenton Reef in Rhode Island Sound

Rendezvous B: In the vicinity of Halfway Rock in the East Passage of Narragansett Bay

Rendezvous C: 0.5 nm SW (240° mag) from R “2” Bell South of Brenton Reef in Rhode Island Sound

Rendezvous D: “Potter Cover” - Between the west end of the Pell Bridge and the south tip of Gould Island



ATTACHMENT B

Course Illustrations

EXAMPLE: COURSE BOARD DISPLAYED ON R/C SIGNAL BOAT

Distance To W: 1.0

Bearing To W: 120

COURSE (Leeward Finish)

Start - W - OS - Leeward Gate - W - OS - Finish



(OS)



(W)



(Leeward Gate)



Start



R/C



Finish