

SAILING INSTRUCTIONS

Cape to Cape Challenge Cup VI

Friday August 1st & Saturday August 2nd 2014

Lewes Yacht Club

Lewes, Delaware

1. Rules

The regatta will be governed by the current Racing Rules of Sailing (RRS), the prescriptions of the United States Sailing Association, the Notice of Race (except as any of these are altered by these Sailing Instructions) and by these Sailing Instructions.

1.1 Any questions in regard to these sailing instructions must be submitted in writing to the Race Committee Chairman at treasurer@lewesyc.com. A response will be posted on the Official Regatta Notice Board and C2C/Yacht Scoring website.

2. Entries

Eligible yachts may be entered by completing registration with the organizing authority and paying all fees.

3. Notice to Competitors

Notices to competitors will be posted on the official notice board located on the first floor of the Lewes Yacht Club (LYC) and C2C/Yacht Scoring website.

4. Changes in Sailing Instructions

Any change in the sailing instructions, after the competitors meeting, will be posted before 1000 on that day.

5. Signals Made Ashore

5.1 Signals made ashore will be displayed on the Club signaling mast located on the bay side of the upper deck of the LYC clubhouse.

5.2 The Answering Pennant "AP" may be displayed. When displayed ashore the time of the warning signal will be posted on the Notice Board before the lowering of "AP".

6. Schedule of Races

6.1 Friday first signal 1230 hours

Order of start Spinnaker followed by Non-Spinnaker.

Second Race to follow.

6.2 Saturday first signal 1100 hours.

Order of start Spinnaker followed by Non-Spinnaker.

Notice of race course will be posted by 0900 hours Saturday.

7. Class Flags

7.1 Signal flag "D" will be used for Spinnaker Class

Beer flag will be used for Non-Spinnaker Class

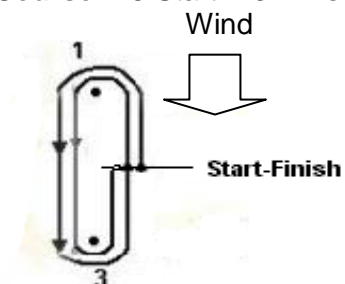
8. The course Friday August 1st

8.1 Rendezvous with the RC Signal Boat in the racing area.

8.2 The course for the Spinnaker class will be a Windward Leeward. Distance and bearing to the weather mark will be posted on the signal boat and announced on Channel 78. The course for the Non-Spinnaker class will be a triangle. The distance and bearings to the weather mark will be posted on the signal boat.

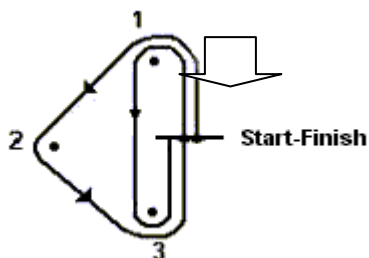
8.3 Course Diagram Spinnaker Class.

COURSE W5
Windward – Leeward – Windward – Leeward – Windward
Start – 1 – 3 – 1 – 3 – Finish
Course W3 Start-1-3-Finish

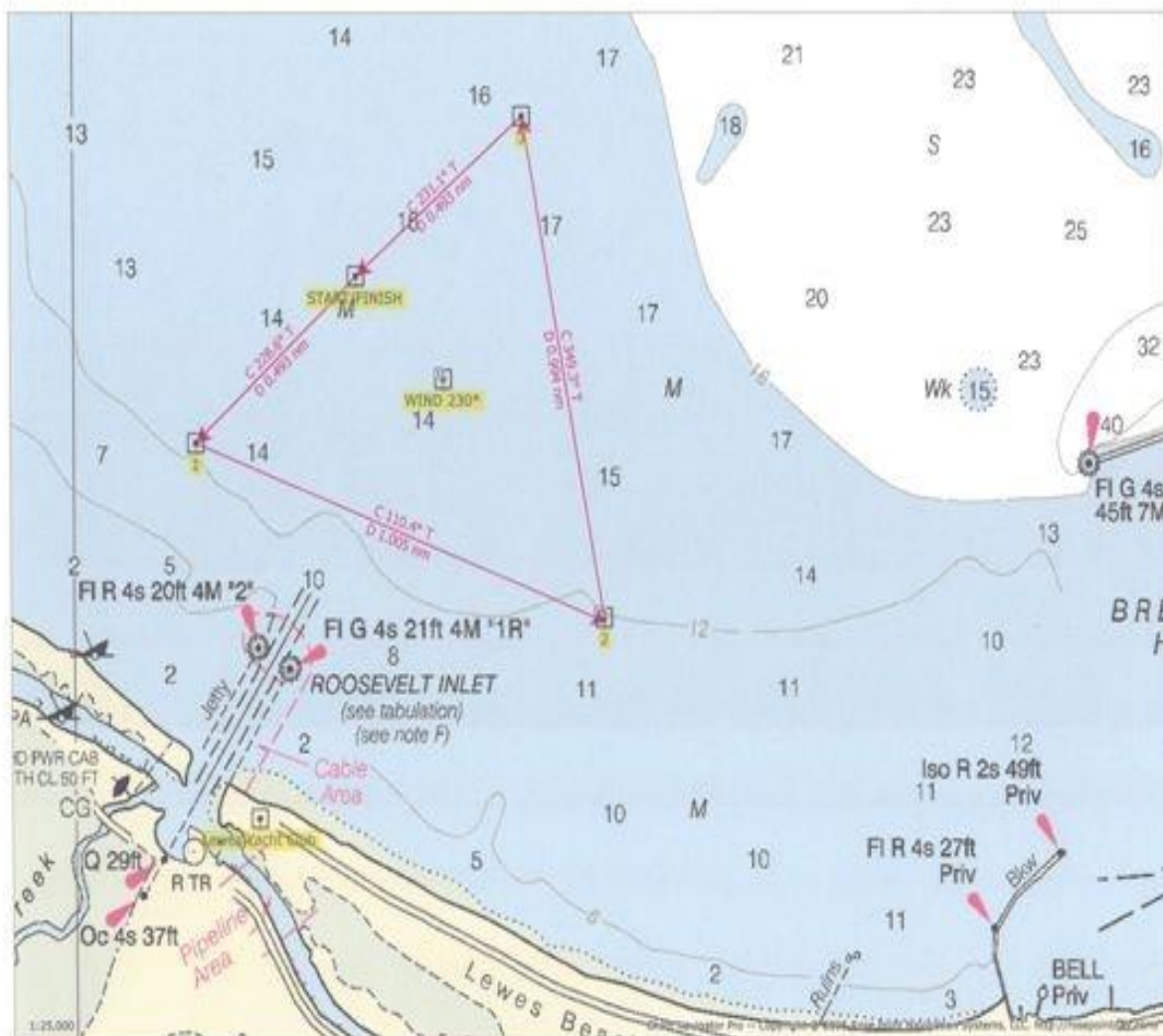


8.4 Course Diagram Non-Spinnaker Class.

Triangle – Windward Finish
Course T4 Start-1-2-3-Finish
Wind

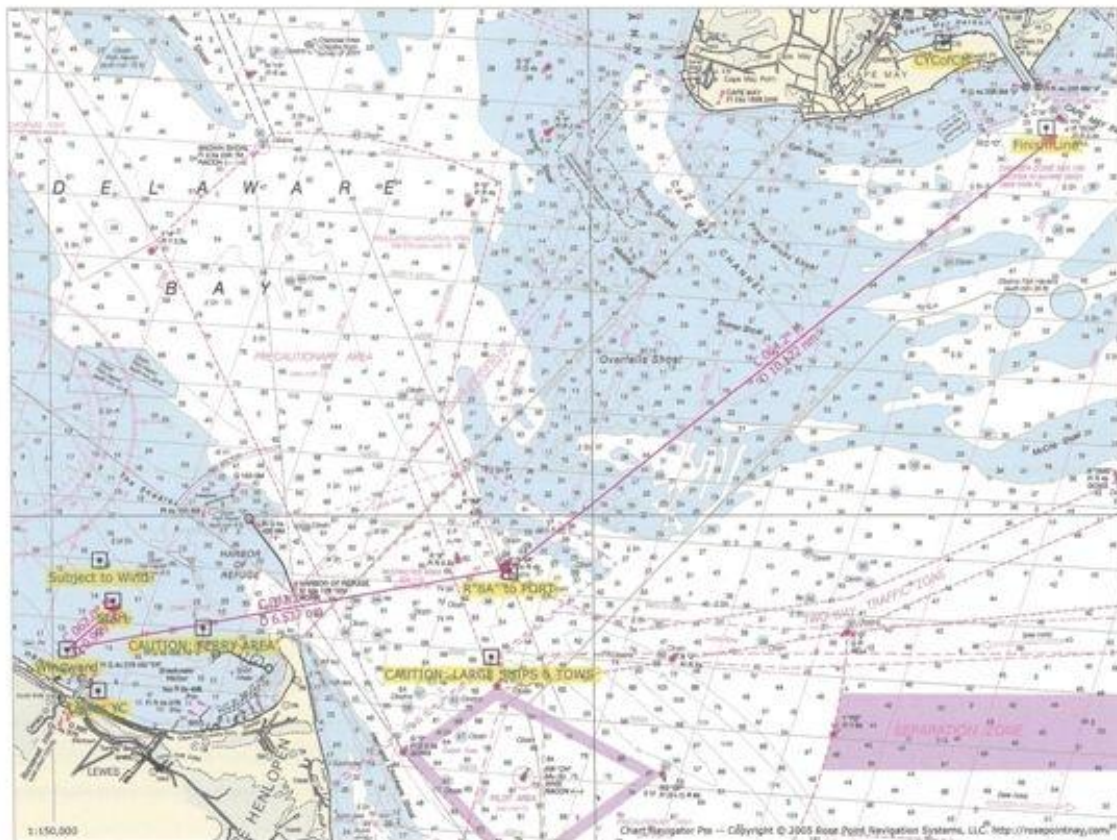


Sample course for Friday races showing race area.

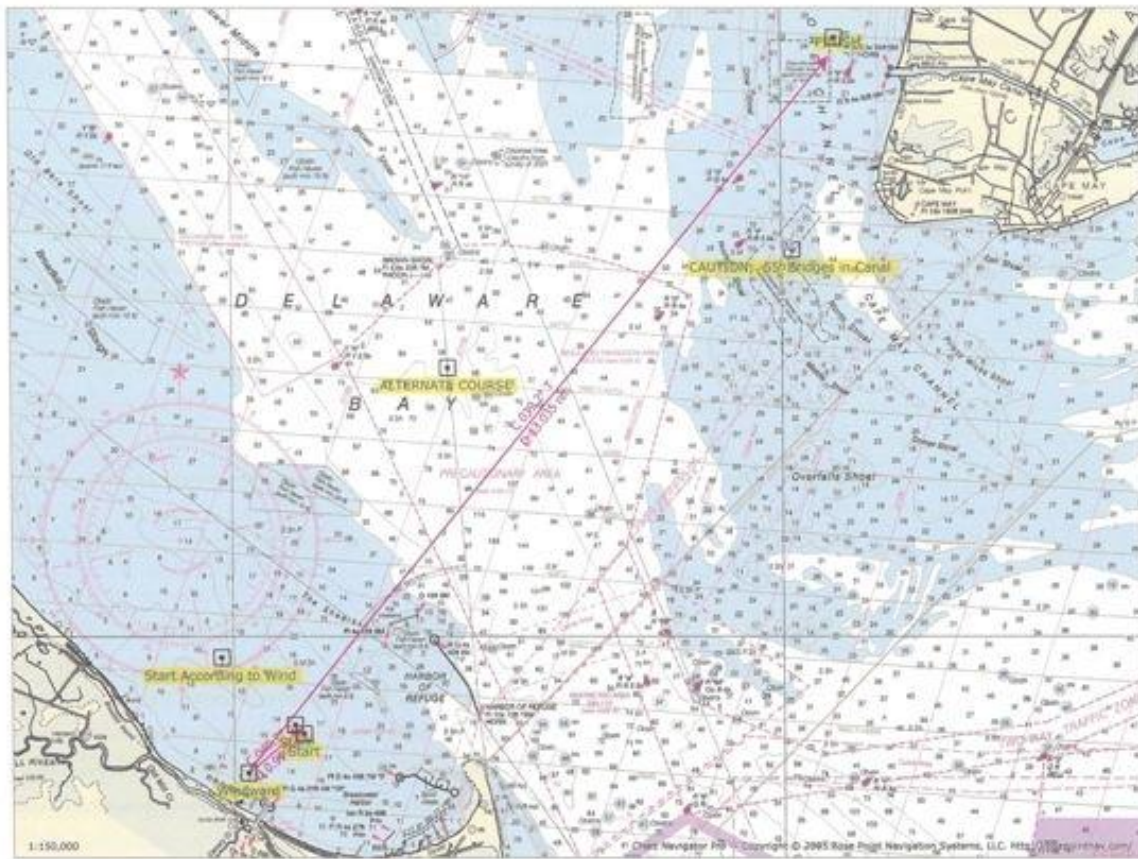


9. The Course Saturday August 2nd

9.1 Course A Ocean Course showing optional 1nm upwind leg.



Course "B" Alternate Course showing optional 1nm upwind leg



9.3 All courses will have the option to add a 1nm weather leg if necessary which will be posted on the RC Signal Boat.

10. Marks

10.1 Marks may be orange, yellow, or red shapes including orange tetrahedrons.

11. Checking In

11.1 All yachts that may compete in a day's race should check in with the RC boat before her fleet's first signal of that day.

12. The Start

The start shall be between an orange flag on the RC boat and a mark at the other end of the line. The start will be signaled in accordance with RRS 26.

There will be one start for spinnaker fleet and another for non-spinnaker fleet.

In Friday's races a yacht that starts more than 10 min after her starting signal will be scored DNS. In Saturday's race a yacht that starts more than 30 min after her starting signal will be scored DNS.

13. Recalls

Individual recalls will be signaled in accordance with RRS 29.2. In addition the Race Committee will attempt to promptly broadcast the sail number of each recalled yacht on channel 78. If RRS 30.1 or 30.2 is in effect, yachts which are OCS in the minute before the start may be notified before the starting signal. The following shall not be grounds for redress:

- a) Failure of the yacht to receive a recall broadcast
- b) A yacht's position in the sequence of broadcast numbers.

14. Changes of Course

Shall be governed according to RRS 33.

15. The Finish

The finishing line will be between a staff displaying an orange flag on a Race Committee boat and an orange tetrahedron at the finishing line location provided in items 8 and 9 "The Course".

16. Time Limits

Friday Races:

16.1 Time limit for first boat to finish in each class will be 2 hours.

16.2 Subsequent boats must finish within 30 minutes after first boat in its class to finish. Boats arriving after that time will be scored DNF.

Saturday Race:

16.3 Time limit for first boat to finish in its class will be 5 hours.

16.4 Subsequent boats must finish 2 hours after first boat in its class to finish. Boats arriving after that time will be scored DNF.

17. Penalties

Penalties for the infraction of a rule in Part 2 or Rule 31 shall be in accord with RRS 44.1 and 44.2.

18. Protests

18.1 The protesting yacht shall display a red flag flown conspicuously from the backstay in accordance with RRS 61.1.

18.2.1 Protests shall be written on USSA forms and lodged with the Protest Committee within the Protest Time which will begin at the time of the docking of the Race Committee Signal boat and end 30 minutes thereafter. Docking time will be posted on the Official Notice Board located in the clubhouse.

18.3 Protest notices will be posted within 30 minutes after the end of the Protest Time limit to inform competitors where and when there is a hearing in which they are interested parties or witnesses.

18.4 The Protest Committee will hear protests in approximately the order of receipt.

19. Scoring

19.1 The Low Point Scoring System RRS Appendix A will be used. Friday's two buoy race scores will each count as 25% of a competitor's total score. Saturday's distance race will count as 50% of a competitor's total score. Scores will be separate by fleet spinnaker and non-spinnaker.

20. Radio Equipment

All boats shall carry a VHF radio capable of receiving and transmitting radio transmissions. A yacht shall neither make nor receive radio transmissions while racing that are not available to all yachts. The Race Committee will use channel 78 for all communications to the competitors.

21. Safety

21.1.1 A yacht which retires from a race shall notify the Race Committee on channel 78 before leaving the course area. If a yacht is not able to notify the Race Committee prior to departure from the course due to damage or injury she shall notify the Race Committee as soon as her situation safely allows.

21.1.2 This race is being conducted in a major commercial traffic area and across shipping lanes. Please give way to ships and ferries that are sailing in channels and unable to move outside them. Remember the rule "ships much bigger than you always have the right of way".

22. Responsibility

The responsibility for supervising this race is solely that of the Lewes Yacht Club who assumes no liability whatsoever in connection therewith. The responsibility of the Race Committee is to provide a start and to record times/position at a finish. The decision to start, continue or retire is the responsibility of the competitor.

23. Prizes

Prizes will be awarded.