



International Melges 24 Class Canadian Championship

July 10-12, 2015

Canadian Melges 24 Class

Windsor Yacht Club



SAILING INSTRUCTIONS

1 RULES

- 1.1 The regatta will be governed by the rules as defined in The Racing Rules of Sailing.
- 1.2 The prescriptions of Sail Canada will apply.
- 1.3 The current Melges 24 Class Rules will apply, including current amendments.
- 1.4 All competitors shall wear personal flotation devices while racing, except for brief periods while changing or adjusting clothing. Wet suits and dry suits are not personal floatation devices. This changes rule 40.
- 1.5 The event will be held in accordance with ISAF Regulation 20, Advertising Code.
- 1.6 The ISAF Sailor Classification Code will apply for competitors competing for the Corinthian trophy, in accordance with the IMCA regatta regulations.
- 1.7 Part 5, Section B of The Racing Rules of Sailing, as well as rules 44.1 and 63.1 will be changed to permit Protest Arbitration, see Addendum C.

2 NOTICES TO COMPETITORS

- 2.1 Notices to competitors will be posted on the official notice board(s) located at Windsor Yacht Club Harbour Room.
- 2.2 Any questions concerning these sailing instructions, scoring, or any other racing issues shall be submitted in writing to the Race Office. Forms to submit inquiries are available there. All written inquiries and responses will be posted on the official notice board.

3 CHANGES TO SAILING INSTRUCTIONS

Any change to the sailing instructions will be posted before 0900 on the day it will take effect, except that any change to the schedule of races will be posted by 2000 on the day before it will take effect.

4 SIGNALS MADE ASHORE

- 4.1 Signals made ashore will be displayed at main flag staff at WYC.

4.2 When flag AP is displayed ashore, '1 minute' is replaced with 'not less than 60 minutes' in the race signal AP. Race Signals.

4.3 Flag B hoisted with one sound signal means "Protest time has begun". When lowered with one sound means "Protest time has ended".

5 SCHEDULE OF RACES

Day	Date	Event	Time
Thursday	July 9	At WYC - Registration, Weigh-In, Launching (Lakeview Park Marina),	1700 - 2000
Friday	July 10	At WYC - Final Registration & Weigh-In, Launching(Lakeview Park Marina),	1000-1200
		WYC - All Boats afloat & Skippers meeting	1200
		Harbour start	1300
		First signal for Day One racing	1400
		Races following	After drop of "B"
Saturday	July 11	First signal for Day Two racing	1100
		Races following	After drop of "B"
		WYC – Melges 24 Dinner	1900
Sunday	July 12	First signal for Day Three racing	1000
		No warning signal after 1400	1400
		WYC - Closing ceremonies	ASAP once at WYC

5.2 Nine (9) Races are scheduled.

5.3 All boats will sail as one fleet.

5.4 The RC may race as many as 4 races each day.

5.5 The O.A. and/or the R.C. reserve the right to modify the program due to weather conditions or other causes.

6 CLASS FLAGS

The Class flag will be the class insignia in blue on a white background.

7 RACING AREAS

ADDENDUM A shows the location of racing areas.

8 THE COURSES

8.1 No later than the warning signal, the race committee signal boat will display the course, approximate compass bearing and distance of the first leg. Failure to broadcast or to receive this notification shall not constitute grounds for granting redress. This changes RRS 62.1(a). Addendum B

Course 3: (3 Legs) Start - 1 - 1a - Gate – Finish (Upwind)

Course 4: (4 Legs) Start - 1 - 1a - Gate - 1 - 1a - Finish (Downwind)

Course 5: (5 Legs) Start – 1 – 1a – Gate – 1 – 1a – Gate- Finish (Upwind)

Course 6: (6 Legs) Start – 1 – 1a – Gate – 1 – 1a – Gate- 1 – 1a - Finish (Downwind)

8.2 Marks 1 and 1a shall be rounded to port. Mark 1a is an offset mark and will be positioned to port of Mark 1.

8.3 (a) If only one Gate mark is set, boats shall round the single mark to port.

(b) Except when there is a change of course, the Gate will be positioned to windward of the RC Signal Boat.

(c) The Gate may be laid after the starting signal.

8.4 Except for when there is a change of course:

(a) the finish for course 4 and 6 will be to leeward of the Gate; and

(b) the finish for course 3, 5 and 7 will be to windward of Mark 1.

9 MARKS

9.1 Marks 1, 1a, Gate will be orange tetrahedron .

9.2 New marks, as provided in instruction 11.1, will be yellow tetrahedron.

9.3 The starting and finishing marks will be race committee boats or a nearby inflatable mark.

10 THE START

10.1 RC signal boat will display code flag L with one sound as it departs the harbor.

10.2 The starting line will be between the staffs displaying an orange flag on the starboard end signal boat and the port-end starting inflatable mark

10.3 A boat starting later than 5 minutes after her starting signal will be scored Did Not Start without a hearing. This changes rules A4 and A5.

10.4 Individual recalls and boats disqualified under rule 30.3 may be broadcast on the VHF channel identified in SI 27 using sail numbers (see SI 25.2). This is in addition to and changes rules 29.1 and 30.3.

10.5 The RC will broadcast twice the sail numbers of all boats observed to be OCS at the start; it will not alter the list based on a boat's actions subsequent to the start.

10.7.1 The Individual Recall flag shall be displayed until all such boats are completely on the pre-start side of the starting line or its extensions and have complied with rule 30.1 if it applies, but no later than 5 minutes after the starting signal. This changes rule 29.1

10.8 After a general recall for a start that used starting penalty rule 30.2 (Z Flag Rule) the RC may broadcast the sail #s that were observed to be OCS.

11 CHANGE OF THE NEXT LEG OF THE COURSE

11.1 To change the next leg of the course, the race committee will lay a new mark (or move the finishing line) and remove the original mark as soon as practicable. When in a subsequent change a new mark is replaced, it will be replaced by an original mark as per rule 33.

12 THE FINISH

12.1 For downwind finishes, the finishing line will be between a staff displaying an orange flag on the finishing line boat and an inflatable mark. The finishing line will be located beyond the leeward gate.

12.2 For windward finishes, the finishing line will be between a staff displaying an orange flag on the finishing line boat and a staff displaying an orange flag on a nearby RC boat or an inflatable mark.

12.3 If the race committee intends to start another race on the same day, it will display the Second Substitute (with no sound) while boats are finishing.

13 PENALTY SYSTEM

13.1 Rule 44.1 is changed so that the Two-Turns Penalty is replaced by the One-Turn Penalty.

13.2 A boat that has taken a penalty or retired under rule 31 or 44.1 shall complete an acknowledgment form at the jury office within the protest time limit.

13.3 Appendix P will apply.

13.4 Rule P2.3 will not apply and rule P2.2 is changed so that it will apply to any penalty after the first one.

14 TIME LIMITS AND TARGET TIMES

14.1 Time limits and target times are as follows:

Time Limit	Mark 1 Time Limit	Target Time
90 minutes	30 minutes	50 minutes

If no boat has passed Mark 1 within the Mark 1 time limit the race will be abandoned.

14.2 Boats failing to finish within 30 minutes after the first boat sails the course and finishes will be scored "TLE" (Time Limit Expired) without a hearing. A "TLE" score shall be two more points than the number of boats that have finished within the time limit. This changes rules 35, 63.1, A4 and A11.

15 PROTESTS AND REQUESTS FOR REDRESS

15.1 Protest forms are available at the race office. Protests and requests for redress or reopening shall be delivered there within the time limit.

15.2 The protest time limit is 60 minutes after code flag "B" – SI 4.3. This will be hoisted as soon as practical as the boats return to harbour. The same time limit applies to protests by the RC and Jury about incidents they observe in the racing area and to requests for redress. This changes rules 61.3 and 62.2.

15.3 Notices will be posted no later than 30 minutes after the protest time limit to inform competitors of hearings in which they are parties or named as witnesses. Hearings will be held in the protest room, located at Windsor Yacht Club, beginning at the time posted.

15.4 Notices of protests by the race committee or jury will be posted to inform boats under rule 61.1(b).

15.5 A list of boats that, under instruction 14.3, have been penalized for breaking rule 42 will be posted.

15.6 Breaches of instructions 17,18,19,21,22,23,24 will not be grounds for a protest by a boat. This changes rule 60.1(a). Penalties for these breaches may be less than disqualification if the jury so decides. The scoring abbreviation for a discretionary penalty imposed under this instruction will be DPI.

15.7 On the last scheduled day of racing a request for reopening a hearing shall be delivered

(a) within the protest time limit if the requesting party was informed of the decision on the previous day;

(b) no later than 30 minutes after the requesting party was informed of the decision on that day. This changes rule 66.

15.8 On the last scheduled day of racing a request for redress based on a jury decision shall be delivered no later than 30 minutes after the decision was posted. This changes rule 62.2.

15.9 Decisions of the jury will be final as provided in rule 70.5..

15.10 Jury actions on the water:

15.10.1 If a member of the Jury witnesses an infringement of the RRS or Class rule C.11, they may indicate their observation with a whistle and a red flag. The boat shall then exonerate itself by complying with SI 14.1 (two-turns penalty). If no penalty is taken the Jury may protest.

15.10.2 If the Jury witnesses an incident that cannot be called with the red flag as above, it may indicate with a whistle and Code Flag "U" and expect a competitor protest ashore if no boat exonerates herself.

15.10.3 Action or lack of action by the Jury under SI 16.10.1 or 16.10.2 shall not be grounds for granting redress. The Jury boats may be positioned anywhere on the course area. Their position at any time shall not be grounds for granting redress. This changes RRS 62.1(a)

15.11 If the race committee posts a list of boats scored OCS, ZFP or BFD on the official notice board before the protest time limit, a request for redress based on such a posted score shall be made no later than one hour after the protest time limit. This changes the first sentence of rule 62.2.

16 SCORING

16.1 The Low Point scoring system of rule Appendix A, as changed below shall apply.

16.2 Three (3) races are required to be completed to constitute a series.

16.3 When fewer than 5 races have been completed, a boat's series score will be the total of her race scores.

16.4 When from 6 to 9 races have been completed, a boat's series score will be the total of her race scores excluding her worst score.

16.5 The scoring abbreviation for a discretionary penalty imposed under SI 16.6 will be "DPI". This changes rule A11.

16.6 Boats scored "TLE" will be scored points equal to the number of boats finishing within the time limit plus two points by the race committee without a hearing. This changes rules A4.2, A5, and A11.

16.7 To request correction of an alleged error in posted race or series results, a boat shall complete a 'Scoring Inquiry Form' available at the Race Office and submit the completed form to the PRO.

17 SAFETY REGULATIONS

17.1 A boat that retires from a race or leaves the racing area between races shall notify the race committee as soon as possible.

18 REPLACEMENT OF CREW OR EQUIPMENT

18.1 Substitution of competitors will not be allowed without prior written approval of the race committee.

18.2 Substitution of damaged or lost equipment will not be allowed unless authorized by the race committee. Requests for substitution shall be made to the committee at the first reasonable opportunity.

19 EQUIPMENT AND MEASUREMENT CHECKS

A boat or equipment may be inspected at any time for compliance with the class rules and sailing instructions. On the water, a boat can be instructed by a race committee measurer to proceed immediately to a designated area for inspection.

20 OFFICIAL BOATS

Official boats will be marked as follows:

All RC boats Blue Race Committee flag

Jury boats White Flag with Black 'J'

Press Boats Yellow Flag with Black 'P'

21 SUPPORT BOATS

Team leaders, coaches and other support personnel shall comply with Addendum B.

22 TRASH DISPOSAL

Boats shall not put trash in the water.

23 HAUL-OUT RESTRICTIONS

Boats shall not be hauled out during the regatta except with and according to the terms of written permission of the race committee.

24 RADIO COMMUNICATION

24.1 Except in an emergency, a boat shall neither make radio transmissions while racing nor receive radio communications not available to all boats. This restriction also applies to mobile telephones.

24.2 The RC will use VHF radio to communicate to the fleet, including the location of the starting area, countdown to the start, general recalls and postponements. Failure to make these broadcasts or failure to hear them shall not constitute grounds for granting redress. This changes rule 62.1.

24.3 VHF channel 72 will be used to communicate with competitors.

24.4 The RC may not acknowledge any radio transmission except in the case of an emergency, and shall not enter into dialogue with competitors.

24.5 Competitors shall not use any electronic device (including scanners) which can receive UHF frequencies from 0830 until their last finish for the day.

25 PRIZES

Prizes will be given as follows:

1st, 2nd 3rd. top Corinthian.

26 DISCLAIMER OF LIABILITY

Competitors participate in the regatta entirely at their own risk. See rule 4, Decision to Race. The organising authority will not accept any liability for material damage or personal injury or death sustained in conjunction with or prior to, during, or after the regatta.

27 INSURANCE

The boat is required to hold adequate third-party insurance, and it is the owner or owner's representative's sole and inescapable responsibility to ensure that the insurance is in place and is adequate.

28 CAMERAS & ELECTRONIC EQUIPMENT

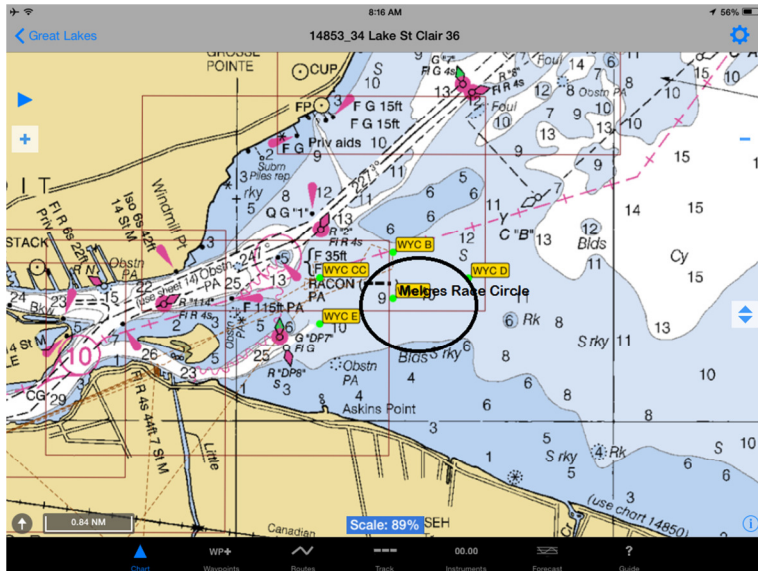
Boats may be required to carry cameras, sound equipment or positioning equipment as specified by the organising authority.

29 MEDIA RIGHTS

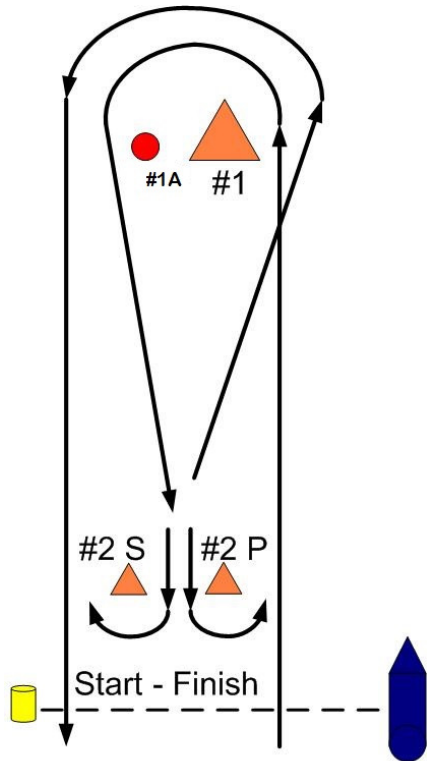
Competitors grant the Organising Authority and IMCA, the unrestricted right and permission to use the name and the image for any text, photograph or video footage of either themselves or the boat they are sailing during the event to be published or broadcast in any media whatsoever (including but not limited to Press and TV advertisements or Internet), for either editorial or advertising purposes or to be used in press information; in this respect, competitors' names and any biographical material of themselves may also be used or reproduced in any way known. As part of the registration process, each individual participating crewmember will be required to sign a declaration accepting this waiver of rights.

30 BERTHING

Boats shall be kept in their assigned places in the harbour.



ADDENDUM A



W - Even # of legs

ADDENDUM B