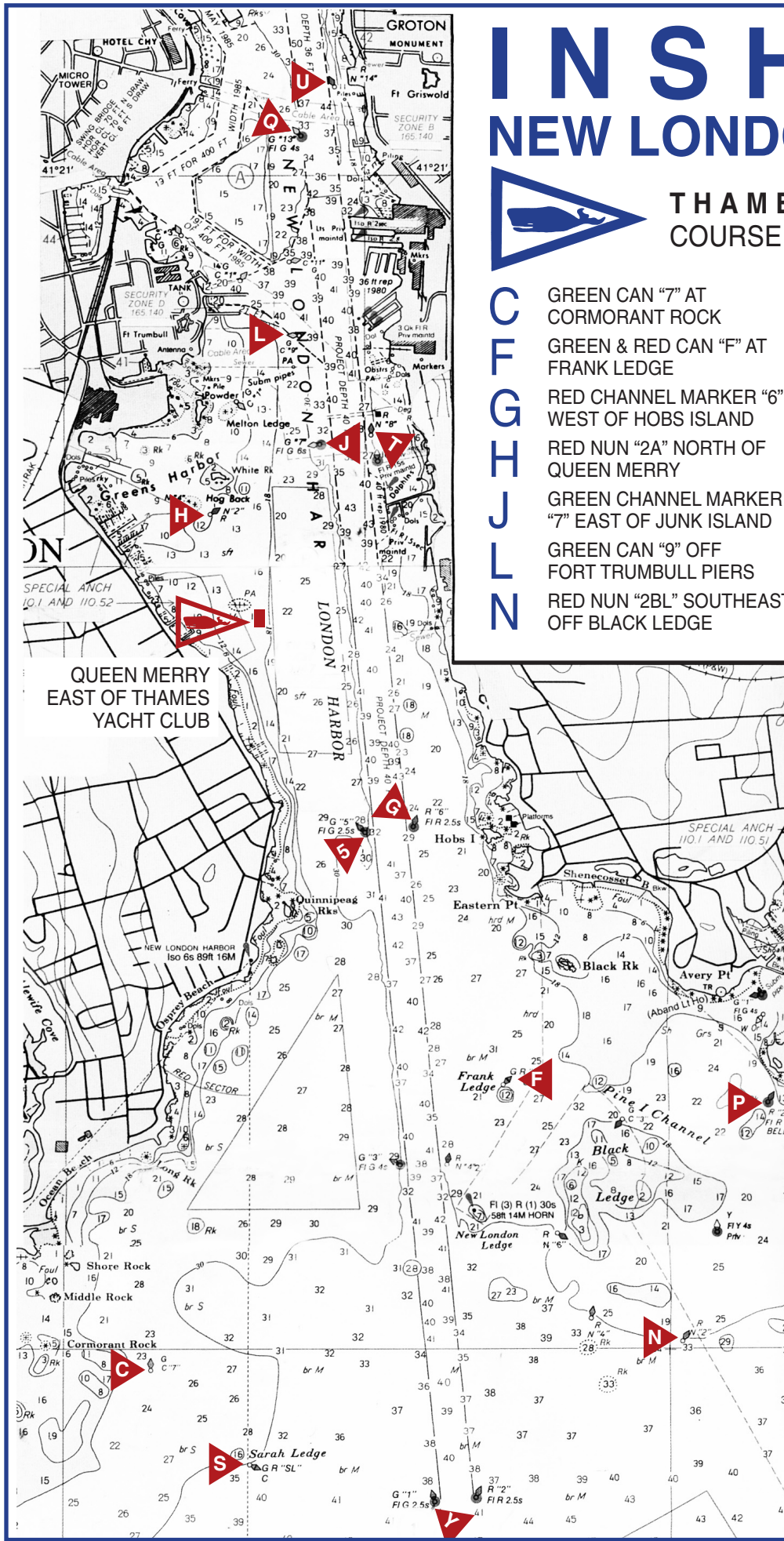


# INSHORE NEW LONDON HARBOR



## THAMES YACHT CLUB COURSE SYMBOLS AND MARKS

<b>C</b>	GREEN CAN "7" AT CORMORANT ROCK	<b>P</b>	RED BELL "2" OFF PINE ISLAND
<b>F</b>	GREEN & RED CAN "F" AT FRANK LEDGE	<b>Q</b>	GREEN CHANNEL MARKER "13" OFF N.L. CITY PIER
<b>G</b>	RED CHANNEL MARKER "6" WEST OF HOBS ISLAND	<b>S</b>	RED & GREEN CAN "SL" AT SARAH LEDGE
<b>H</b>	RED NUN "2A" NORTH OF QUEEN MERRY	<b>T</b>	RED NUN "8" NORTH OF HESS OIL PIER
<b>J</b>	GREEN CHANNEL MARKER "7" EAST OF JUNK ISLAND	<b>U</b>	RED NUN "14" OFF GROTON UTILITIES
<b>L</b>	GREEN CAN "9" OFF FORT TRUMBULL PIERS	<b>Y</b>	RED CHANNEL MARKER "2" SOUTH OF N.L. LEDGE
<b>N</b>	RED NUN "2BL" SOUTHEAST OFF BLACK LEDGE	<b>5</b>	GREEN CHANNEL MARKER "5" OF QUINNIPEAG ROCKS
		<b>A</b>	STARTING/FINISHING INFLATABLE MARK
		<b>M</b>	AN ORANGE MARK SET SOUTH OF THE QM
		<b>B</b>	AN ORANGE MARK SET NORTH OF THE QM



May 2009

**DO NOT USE THIS FOR NAVIGATION.  
IT IS ONLY INTENDED TO BE USED TO  
DISPLAY THE RACING MARKS.**



# THAMES YACHT CLUB COURSE SYMBOLS AND MARKS



## COURSE DESIGNATIONS


Classes will start in the order posted on the course board. The courses or the order may be changed prior the Warning Signal. The posted order will be maintained even though no boats are on hand to start in a posted class.

A circled mark symbol indicates that the mark is to be left to the STARBOARD. An un-circled mark symbol means the mark is to be left to PORT.

J Un-circled mark - mark is left to PORT

ⓐ Circled mark - mark is left to the STARBOARD

No symbol will be used to indicate the finish. It is understood that races will finish at the same mark as the starting mark (except that the Shorten Course procedure provides for ending a race at another mark of the course.)

NOTE: Where the "QUEEN MERRY"  is used as the Committee Boat, the finish mark will ALWAYS be located on the easterly end of the line, regardless of the direction of the last leg of the course.

## ADDITIONAL SYMBOLS

**A** Where the starting line pin is selected as an intermediate mark of the course and is not one of the available TYC marks, the symbol "A" will be used (circled if appropriate.)

Example: 5 J A J

**2** The symbol "2" following the course on the course board means that the course is to be sailed twice around. For the start of the second round, the starting line mark is a mark on the course and starting line shall be crossed in the same direction as the original start. The symbol "2" will not be circled.

Example: 5 J 2

<b>C</b>	GREEN CAN "7" AT CORMORANT ROCK
<b>D</b>	LIGHTED YELLOW BUOY "NL" AT DUMPLING GROUND
<b>E</b>	RED & WHITE LIGHTED MoA WHISTLE "SE" OFF SILVER EEL POND
<b>F</b>	GREEN & RED CAN "F" AT FRANK LEDGE
<b>G</b>	RED CHANNEL MARKER "6" WEST OF HOBBS ISLAND
<b>H</b>	RED NUN "2A" NORTH OF QUEEN MERRY
<b>I</b>	RED & GREEN CAN "DIR" W/TOP MARKS - INTREPID ROCK
<b>J</b>	GREEN CHANNEL MARKER "7" EAST OF JUNK ISLAND
<b>L</b>	GREEN CAN "9" OFF FORT TRUMBULL PIERS
<b>N</b>	RED NUN "2BL" SOUTHEAST OFF BLACK LEDGE
<b>P</b>	RED BELL "2" OFF PINE ISLAND
<b>Q</b>	GREEN CHANNEL MARKER "13" OFF N.L. CITY PIER
<b>R</b>	GREEN & RED CAN "R" AT RAPID ROCK
<b>S</b>	RED & GREEN CAN "SL" AT SARAH LEDGE
<b>T</b>	RED NUN "8" NORTH OF HESS OIL PIER
<b>U</b>	RED NUN "14" OFF GROTON UTILITIES
<b>V</b>	RED NUN "28VL" AT VIXON LEDGE
<b>X</b>	RED BELL "2" NORTH OF NORTH HILL, F.I.
<b>Y</b>	RED CHANNEL MARKER "2" SOUTH OF N.L. LEDGE
<b>Z</b>	GREEN CAN "3" AT LITTLE GOSHEN REEF
<b>5</b>	GREEN CHANNEL MARKER "5" OF QUINNIPEAG ROCK
<b>A</b>	STARTING/FINISHING INFLATABLE MARK
<b>M</b>	AN ORANGE MARK SET SOUTH OF THE QM
<b>B</b>	AN ORANGE MARK SET NORTH OF THE QM