



Lake Ontario Short-Handed Race Series 2021

Race 1 - Course Race – Sunday, August 1

Race 4 - Long Distance Race - August 14-15,

Races 5 & 6 - DYC Weekend - September 18/19

Lake Ontario Offshore Racing of the Port Credit Yacht Club

SAILING INSTRUCTIONS

Version V01.10/ 2021-07-29

With Amendment 1

www.loor.ca

The Registration and Race Document Web Site is

<https://yachtscoring.com/emenu.cfm?eID=13260>

Race Committee Email Address: racecommittee@loor.ca

Race Committee Phone: 1-866-462-8828

Race Committee VHF Channel 71

Given the fluidity of the situation around COVID 19 that may extend to cover this event, LOOR may need to adjust to protect the health and well being of racers, volunteers, and others. This may include limits on the number of sailboats and/or crew numbers, whether by sailboat or in total.

These will be done as amendments to the Notice of Race or Sailing Instructions and posted on the Official Notice Board.

Amendments

#	DATE	SECTION	CHANGE
1	2021-07-29	6.1	Correct month for meeting for Race 1
1	2021-07-29	9.1	Corrected position of Ajax Weather Buoy AKA ODAS Station 45159

General Information

(This general information does not rank as *rules*. If needed as a *rule*, it is explicitly included in the NOR, or SIs)

COVID-19

While the outdoor sport of sailboat racing is now allowed under the Government of Ontario's Regulations, that does not mean that there is no danger from COVID-19. LOOR encourages all participants to take the appropriate precautions against COVID-19 appropriate for their circumstances to protect themselves and their crew, while involved in the competition.

We suggest you consult the COVID-19 related web sites of the Government of Canada, Government of Ontario, and your region's Public Health Department for information on applicable precautions and preventative steps.

While at Port Credit Yacht Club (PCYC) or Dalhousie Yacht Club (DYC), you are required to adhere to all the Club's COVID-19 policies and requirements in effect at that time.

SAILING INSTRUCTIONS

The notation '[DP]' in a rule in the Notice of Race (NoR), Sailing Instructions (SIs) or other additional document that is a rule means that the penalty for a breach of that rule may, at the discretion of the protest committee, be less than disqualification.

The notation '[NP]' in a rule in the Notice of Race (NoR), Sailing Instructions (SIs) or other additional document that is a rule means that the penalty for a breach of that rule will not be grounds for a protest by a sailboat.

The Racing Rules of Sailing (RRS) 2021-2024 state that items, *Rules*, and the Notice of Race (NoR) do not have to be repeated in Sailing Instructions (SIs). Both the NoR and SIs describe the conduct of the event and need to be used jointly during the event.

1 The RULES

1.1 The event is governed by the rules as defined in The Racing Rules of Sailing.

1.2 The event is also governed by the following documents.

1.2.1 [DP] LOOR Offshore Special Regulations (OSR)

1.2.1.1 Race 4 Long Distance

The event is a Category 3 Event under the World Sailing Offshore Special Regulations. Offshore Special Regulations for Category 3 with prescriptions from Sail Canada and amended by the Lake Ontario Offshore Racing apply, as documented in:

LOOR Offshore Special Regulations for Category 3 Monohulls

LOOR Offshore Special Regulations for Category 3 Multihulls

These are available on the Registration and Race Document Web Site. See page 19.

1.2.1.2 All Other Races

These events are a Category 4 Event under the World Sailing Offshore Special Regulations. Offshore Special Regulations for Category 4 with prescriptions from Sail Canada and amended by the Lake Ontario Offshore Racing apply, as documented in:

LOOR Offshore Special Regulations for Category 4 Monohulls

LOOR Offshore Special Regulations for Category 4 Multihulls

These are available on the Registration and Race Document Web Site. See page 19.

1.2.2 [DP] Ontario Environmental Protection Act Regulations #343, available here:

www.e-laws.gov.on.ca/html/regs/english/elaws_regs_900343_e.htm

1.3 The Racing Rule(s) will be changed as outlined below.

1.3.1 RRS 28.1

Is changed as follows.

A boat shall *start* or be assessed the time penalty in 1.3.2, *sail the course* and then *finish* or be assessed the time penalty in 1.3.2, when any part of her hull crosses the finishing line from the course side, unless if after crossing the finishing line she

(a) takes a penalty under rule 44.2,

(b) corrects an error in sailing the course made at the line, or

(c) continues to sail the course.

While doing so, she may leave on either side a *mark* that does not begin, bound, or end the leg she is sailing. After *finishing or* being assessed the time penalty in 1.3.2, when any part of her hull crosses the finishing line from the course side, she need not cross the finishing line completely.

1.3.2 RRS 29.1, RRS 64.1 (a) and RRS Appendix A5

A sailboat that is OCS at the start of her class is assessed a 20-minute penalty for the Race Long Distance and 10 minutes for all other races. A sailboat starting six minutes before her Start Signal may be protested by the Race Committee, and the Protest Committee will apply an appropriate penalty if the sailboat is found to have infringed this. This changes RRS 29.1, RRS 64.1 (a) and RRS Appendix A5.

1.3.3 RRS 41 Outside Help

All forms of communication. Each sailboat may communicate with any person, competitor, sailboat, or outside source for information available using any means available throughout the race. This changes RRS 41.

1.3.4 RRS 42.3 Exceptions

An engine may be used for generating electrical power provided that such use does not advance the boat's position. This changes RRS 42.3.

1.3.5 RRS 51 Movable Ballast & RRS 52 Manual Power

Canting keels and water ballast are allowed, assuming the applicable class/measurement/handicap rules permit them.

Is modified to allow canting keels and water ballast, assuming the applicable class/measurement/handicap rules permit them.

All movable ballast systems must be capable of manual operation if the powered systems are inoperable.

The use of power auto helm devices is allowed. These change RRS 51 & 52.

1.3.6 RRS 60.1 (a)

Breaches of specific Sailing Instructions, as denoted in the Sailing Instructions by “[NP]”, will not be grounds for a protest by a sailboat. This changes RRS 60.1 (a).

1.3.7 [NP] RRS 62 Redress

The Race Committee may announce sailboats subject to RRS 29.1.

The Race Committee may announce a sailboat’s successful completion at the finish. This changes RRS 62.

1.3.8 RRS 64.2

For infringements of the rules other than Part 2, the Jury may award a lesser penalty than DSQ, unless stated otherwise in the Notice of Race or Sailing Instructions. This changes RRS 64.2.

1.3.9 RRS A4 & A5

A sailboat not starting within 90 minutes of her starting signal will be scored DNS. This changes RRS A4 & A5.

1.4 RRS Appendix RV, Reduced Visibility replaces RRS Part 2 from 2000 until 0800, the next day. This document is attached at end of these SIs.

1.5 When rule 20 applies, a boat may indicate her need for room to tack or her response by VHF radio on channels 16 and 71 Canadian.

1.6 [DP] [NP] Sailboats are required to electronically submit LOOR Alternative Penalty Acknowledgement Form within 90 minutes of finishing by email to racecommittee@loor.ca. The form is available on the Registration and Race Document Web Site, see page 19.

2 CHANGES TO SAILING INSTRUCTIONS

2.1 Any change to the sailing instructions will be posted before 0900 on the day it will take effect, except that any change to the schedule of races will be posted by 2000 on the day before it will take effect.

3 COMMUNICATIONS WITH COMPETITORS

3.1 Notices to competitors will be posted on the official notice board located at <https://yachtscoring.com/emenu.cfm?eID=13260>.

3.2 The race office is located virtually: 1-866-462-8828, racecommittee@loor.ca.

3.3 [DP] Radio Communications

3.3.1 Marine VHF Channel 71 Canadian shall be used by the Race Committee for radio communication during the race.

3.3.2 Each sailboat shall monitor VHF Channel 71 from one hour before her warning signal until one hour after starting and from approximately one hour before finishing or 5 NM from the Finish, whichever occurs later, until 30 minutes after finishing.

3.3.3 Sailboats are encouraged to talk to other sailboats in the race on marine VHF channel 71 throughout the race, especially at 1000 and 2200 EDT.

3.3.4 Sailboats shall monitor marine VHF channel 16 at all other times.

4 CODE OF CONDUCT

4.1 [DP] Competitors and support persons shall comply with reasonable requests from race officials.

4.2 [DP] Competitors and support persons shall handle any equipment or place advertising provided by the organizing authority with care, seamanship, in accordance with any instructions for its use and without interfering with its functionality.

5 SIGNALS MADE ASHORE

5.1 Signals made ashore will be displayed on the main flagpole of the applicable yacht club.

5.2 When flag AP is displayed ashore, '1 minute' is replaced with 'not less than 60 minutes' in Race Signals AP.

6 SCHEDULE OF RACES

6.1 Classes, division, and fleet splits and starting sequence, including class flags, for RRS 26, shall be made available no later than 1200 EDT Thursday, July 29, 2021, on the Official Notice Board. They may be published earlier at <https://yachtscoring.com/emenue.cfm?eID=13260> under Document & Forms, see Diagram 5 on page 14. The assignment of participants to a division, fleet or class is subject to change.

6.2 The schedule for individual events.

RACE	PARTICIPANTS' MEETING		RACE
	TIME	LOCATION	FIRST WARNING
Race 1	20:30 EDT, Jul. 29 th	Zoom	11:25 Sun. Aug. 1
Race 4	19:30 EDT, Aug. 13 th	Zoom	09:55 Sat. Aug. 14
Race 5	19:30 EDT, Sep. 17 th	Zoom	09:55 Sat. Sep. 18
Race 6			09:55 Sun. Sep. 19

Information on how to register will be send to registered entries 48 hours before the virtual meeting.

7 CLASS FLAGS

7.1 Division and fleet splits and starting sequence, including class flags, for RRS 26, will be posted by July 29, 2021, on the Race Document Web Site under SPLITS & STARTING SEQUENCES and will be available at the first Competitors' meeting.

7.2 Sailboats shall fly the listed numeral pennant, for their class, PHRF rating for which they are racing, from their backstay or other prominent position if she has no backstay. The required numeral pennants, from 0 to 9 inclusive,

shall be posted by July 29, 2021, on the Race Document Web Site under SPLITS & STARTING SEQUENCES.

8 RACING AREA

8.1 The races will occur in western Lake Ontario.

9 THE COURSES

9.1 Race 1 – Short Course

Start	LOOR Start Area	-
To	Fogh Clarkson Mark (LSYC)	Left on port side of the sailboat
To	TE18 Gibraltar Point Buoy	Left on starboard side of the sailboat
To Finish	EYC/MCC Racing Mark 5	-

The approximate distance is 15.5 NM.

9.2 Race 4 – Long Distance Race

Start	LOOR Start Area	-
To	Ajax Weather Buoy AKA ODAS Station 45159	Left on starboard side of the sailboat
To	Burlington Weather Tower, AKA Van Wagners Beach Light	Left on starboard side of the sailboat
To Finish	PCYC Finish Mark for <u>Onshore Finish</u> & PCYC Shore Station	-

The approximate distance is 92 NM.

See Diagram 4, Race 4 – Long Distance – Course on page 18.

9.3 Race 5 – PCYC to DYC

Start	PCYC Start Mark	-
To Finish	DYC Finish Mark	-

The approximate distance is 25 NM.

9.4 Race 6 – DYC to PCYC

Start	DYC Start Mark	-
To Finish	PCYC Finish Mark for <u>On-water Finish</u>	-

The approximate distance is 25 NM.

Marks in Alphabetical Order

MARK REFERENCE	TYPE	DESCRIPTION
Ajax Weather Buoy AKA ODAS Station 45159	Mark	A three-meter weather buoy located approximately at 43° 46.00' N 078° 59.09' W
Burlington Weather Tower, AKA Van Wagners Beach Light	Mark	A tower with a flashing yellow light located at approximately 43° 16.22' N 079° 45.56' W.
DYC Finish Mark	Mark	The DYC Mark 3, a white plastic drum, approximately at 43° 13.25' N, 079° 16.21' W which is approximately 0.7 NM on bearing 165° from the entrance to Dalhousie harbour.
DYC Start Mark	Mark	The DYC Mark 3, a white plastic drum, approximately at 43° 13.25' N, 079° 16.21' W which is approximately 0.7 NM on bearing 165 0 from the entrance to Dalhousie harbour.
EYC/MCC Racing Mark 5	Mark	A drum mark with number 5, approximately at 43° 35.06' N, 079° 27.28' W
Fogh Clarkson Mark (LSYC)	Mark	Located approximately at 43° 30.64' N, 079° 33.65' W
LOOR Start Area	Mark	Located approximately 0.5 NM on a bearing of 150° magnetic from the entrance to the harbour at Port Credit Yacht Club located at approximately 43° 33.41' N 079° 32.90 W
PCYC Finish Mark for <u>Onshore Finish</u>	Mark	A white buoy with orange stripes and fixed low intensity flashing amber (yellow) light, lighted only overnight, approximately 155 mag 0.2 NM from the shore station approximately at 43°33.62' N 079°33.22' W. See Diagram 2, Race 4 – Long Distance – Finish on page 16.
PCYC Finish Mark for <u>On-water Finish</u>	Mark	A white buoy with orange stripes and fixed low intensity flashing amber (yellow) light, lighted only overnight, approximately 155 mag 0.2 NM from the shore station approximately at 43°33.62' N 079°33.22' W. See

		Diagram 3, Race 6 – DYC to PCYC – Finish on 17.
PCYC Race Committee Shore Station	Mark	A mast flying an orange flag, located on the headland immediately west of the entrance to the harbour at PCYC approximately at 43° 33.76' N 079° 33.45' W. See Diagram 2, Race 4 – Long Distance – Finish on page 16.
TE18 Gibraltar Point Buoy	Mark	A red buoy with a flashing red light located just off the Toronto Islands located at approximately 43° 36.32' N, 079° 23.50' W.

9.6 Marks as listed, above, should be at the identified latitude and longitude location. If a mark is not at the identified latitude and longitude location, or otherwise cannot be seen due to poor visibility, then the sailboat shall round the identified latitude and longitude location as indicated in the Sailing Instructions and continue with the race.

9.7 A record shall be entered in the sailboat's log detailing the timeline and efforts made to find the mark and the time that the mark's identified latitude and longitude was deemed to have been rounded. The sailboat's GPS tracking record shall be saved and provided for evidentiary review by the Race Committee on request.

10 OBSTRUCTIONS & EXCLUSION ZONES

10.1 [DP] [DP] The following area is designated as an obstruction and an exclusion, keep out, zone: USA waters.

11 THE START

11.1 Races will be started by using rule 26, with an interval of at least one minute between a starting signal and the warning signal for the next start.

11.2 The starting line will be between an inflatable mark and the halyard carrying an orange flag on the Race Committee signal vessel.

11.3 After the first warning signal and prior to her warning signal, a sailboat shall keep clear of the starting area that extends one-quarter of the length of the starting line ahead of and behind the starting line. It shall also extend one-quarter of the length of the starting line past either end of the starting line; see Diagram 1, The Starting Area, on page 15.

11.4 *If and only if, code flag "L" is displayed*, on the Race Committee Signal Vessel, sailboats shall sail on starboard tack close to the stern of the Race Committee Signal Vessel and shall report its sail number. Check in will not be complete until the Race Committee acknowledges the sailboat. Check in by VHF radio or cell phone may not be accepted. [NP]

11.5 Any sailboats starting within the time limit and if the Race Committee is no

longer on station, shall radio the Race Committee VHF Channel 71 Canadian when she is starting. [NP]

- 11.6 If any part of a sailboat's hull is on the course side of the starting line during the minute before her starting signal or she is subject to SI 1.3.2, the Race Committee may announce this on the VHF Channel 71 Canadian. [NP]

12 THE FINISH

- 12.1 Boats shall finish between the halyard carrying the orange shape or flag as described in the applicable Course above and the final mark of the course as described in the applicable Course above.
- 12.2 Sailboats are required to maintain radio contact with the Race Committee throughout the finish to ensure correct identification of the finishing sailboat, until 30 minutes after finishing. whether day or night. When finishing between sunset and sunrise, all sailboats shall announce their sail numbers, immediately prior to finishing, and record their finish time.
- 12.3 For Race 4, Long Distance, each sailboat shall call/hail the Race Committee approximately three (3) NM from the finish on VHF Channel 71 Canadian.
- 12.4 After a sailboat has finished, the Race Committee may acknowledge the completion by providing the sailboat's finish time or other signal. This acknowledgement, the failure to make the acknowledgement or its order, will not be grounds for a request for redress. This changes RRS 62.1 (a).
- 12.5 In the absence of the Race Committee at the finish line, a yacht shall take her own finishing time and notify the Race Committee at the finish by VHF radio, phone call to race committee phone number or email to race committee email. The report shall be submitted with four (4) hours.

The recommended approach is to take a photograph of a GPS screen showing the time and position and submitting to the Race Committee email address.

- 12.6 If there is no longer an established finishing line, the finish shall be a line extending from the finishing mark at right angles to the course from the last mark and of less than 75 yards in length in either direction from the mark.
- 12.7 If neither the Race Committee Vessel is on station at the finish nor is there a Finish Mark, the finish shall be a line extending from the identified latitude and longitude location of the Finish Mark, as indicated in the Sailing Instructions, at right angles to the course from the last mark and of less than 75 yards in either direction from the identified latitude and longitude location of the Finish Mark.

13 PENALTY SYSTEM

- 13.1 The Scoring Penalty, RRS 44.3, applies.

14 TIME LIMITS

- 14.1 There is no time limit.

15 HEARING REQUESTS.

- 15.1 Protests shall be filed using online submission feature available after logging into the Owner's Corner on Race Document and Registration Web Site, see page 19, within two hours of a sailboat's finish.
- 15.2 Notices of protests by the Race Committee or Protest Committee will be posted to inform boats under rule 61.1(b) on the Official Notice Boards.
- 15.3 Hearings will take place at PCYC at 1900 EDT on the Thursday following the race.

16 SCORING

- 16.1 Sailboats will be scored in their own classes.
- 16.2 The series is scored using A8.
- 16.3 For sailboats racing under PHRF-LO, PHRF-LO Time-on-time will be used to calculate the corrected time.
- 16.4 Series Scoring
- 16.4.1 LOSHRS Overall Season Championship
- 16.4.1.1 If Race 4, Long Distance Race, is held

To be eligible for the LOSHRS Overall Season Championship, a sailboat

- Must complete Race 4, Long Distance Race, i.e., no score of DNC, DNS, OCS, UFD, BFD, DNF, RET, DSQ, DNE
- From the row for the number races completed in column 1, below.
 - The sailboat must compete in a minimum number of races, column 2, below, in the same class as she raced in Race 4, Long Distance Race, i.e., no score of DNC.
 - The sailboat's score for the LOSHRS Overall Season Championship is calculated as defined in column 3, below.

Column 1	Column 2	Column 3
Races Held	Minimum races in which a sailboat is scored other than DNC	Races includes to calculate overall score for a sailboat (*)
1	1	Long Distance Race
2	2	Long Distance Race and all other races
3	2	Long Distance Race and all other races
4	2	Long Distance Race and all other races

(*) From the same fleet as she raced in Race 4, Long Distance Race.

- 16.4.1.2 If Race 4, Long Distance Race, is not held.

To be eligible for the LOSHRS Overall Season Championship, a sailboat

- From the row for the number races completed in column 1, below.
 - The sailboat must compete in a minimum number of races, column 2, below, in the same class.
 - The sailboat's score for the LOSHRS Overall Season Championship is calculated as defined in column 3, below.

Column 1	Column 2	Column 3
Races Held	Minimum races in which a sailboat is scored other than DNC	Races included to calculate overall score for a sailboat
1	1	All Races
2	2	All Races
3	2	All Races

16.4.2 LOSHRS Day Race Season Championship

16.4.2.1 Only Day Races will be included in the calculation of the LOSHRS Day Race Season Championship.

Day Races Held	Races included to calculate overall score for a sailboat
1	All Races
2	All Races
3	All Races

17 SAFETY REGULATIONS

- 17.1 Sailboats are encouraged to implement their own check-in process and with individuals ashore via phone email or other mechanism. [NP]
- 17.2 A sailboat withdrawing from the race shall wear her ensign and keep clear of other competitors. [DP]
- 17.3 The Race Committee shall be notified of a sailboat's withdrawal at the earliest possible opportunity on VHF Channel Canadian 71, at the following telephone number 1-866-462-8828, or at the email address of racecommittee@loor.ca . [NP] [DP]
- 17.4 Sailboats may check in with the Race Committee at any time during the race to advise Race Committee of their position at 1-866-462-8828 or the email address of racecommittee@loor.ca.
- 17.5 Failure of a sailboat to make every reasonable effort, under the circumstances, to comply with SI 17.3, may result in protest by the Race Committee. The results of this hearing may be used by the Organizing Authority whether to accept future registrations by this sailboat or owner.

- 17.6 All sailboats racing shall be required to maintain a log of significant events, mark rounding, calls to the Coast Guard, and engine on and off for charging only. [NP]

18 EQUIPMENT AND MEASUREMENT CHECKS

A sailboat may be inspected at any time during the period from the Mandatory Participants' Meeting until three hours after her finish. The Race Committee may, at the finish of the race, direct a sailboat to proceed directly to a designated location at Port Credit Yacht Club. A boat which fails to follow such directions, or which subsequently fails the inspection may be protested by the Technical Committee. [NP] [DP]

19 PRIZES

Prizes will be given as listed on the NoR or at www.loor.ca .

20 RISK STATEMENT

- 20.1 RRS 3 states: 'The responsibility for a boat's decision to participate in a race or to continue to race is hers alone.' By participating in this event each competitor agrees and acknowledges that sailing is a potentially dangerous activity with inherent risks. These risks include strong winds and rough seas, sudden changes in weather, failure of equipment, boat handling errors, poor seamanship by other boats, loss of balance on an unstable platform and fatigue resulting in increased risk of injury. Inherent in the sport of sailing is the risk of permanent, catastrophic injury or death by drowning, trauma, hypothermia, or other causes.

21 INSURANCE

- 21.1 [DP] [NP] Each participating boat shall be insured with a valid third-party liability insurance policy with a minimum coverage of \$2,000,000 CAD per event for Canadian sailboats.

Diagram 1

The Starting Area

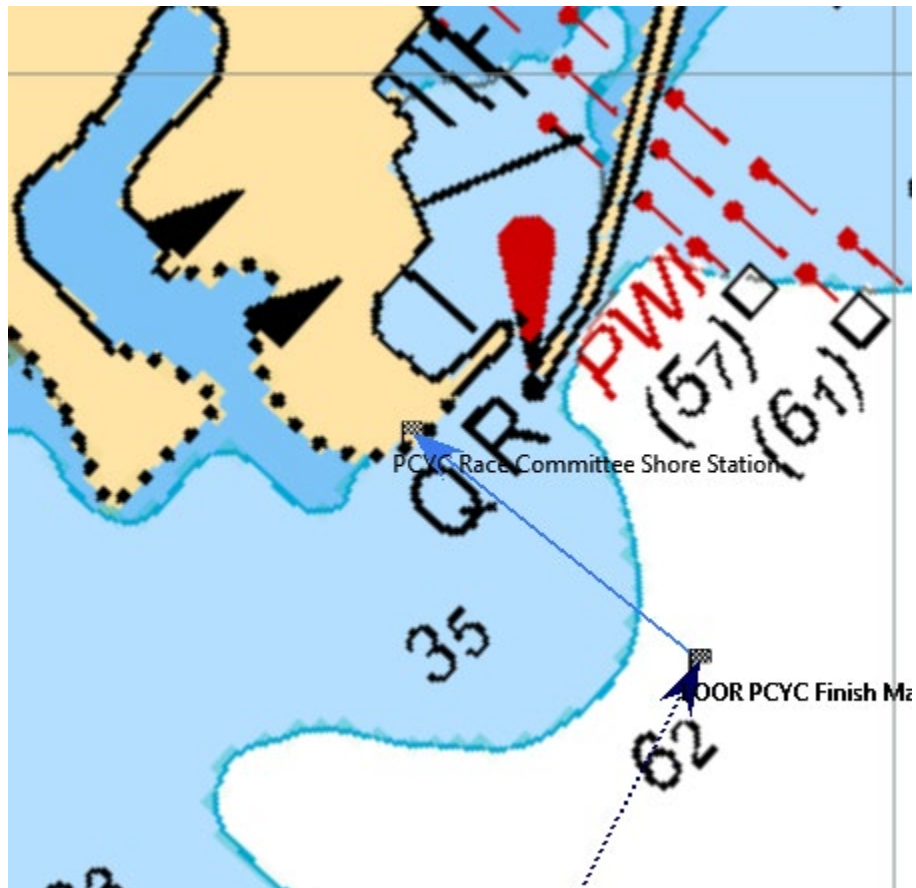


After the first warning signal for a race and prior to her warning signal, a sailboat shall keep clear of the starting area that extends one-quarter of the length of the starting line ahead of and behind the starting line. It shall also extend one-quarter of the length of the starting line past either end of the starting line

See SI 11

Diagram 2

Race 4 – Long Distance - Finish



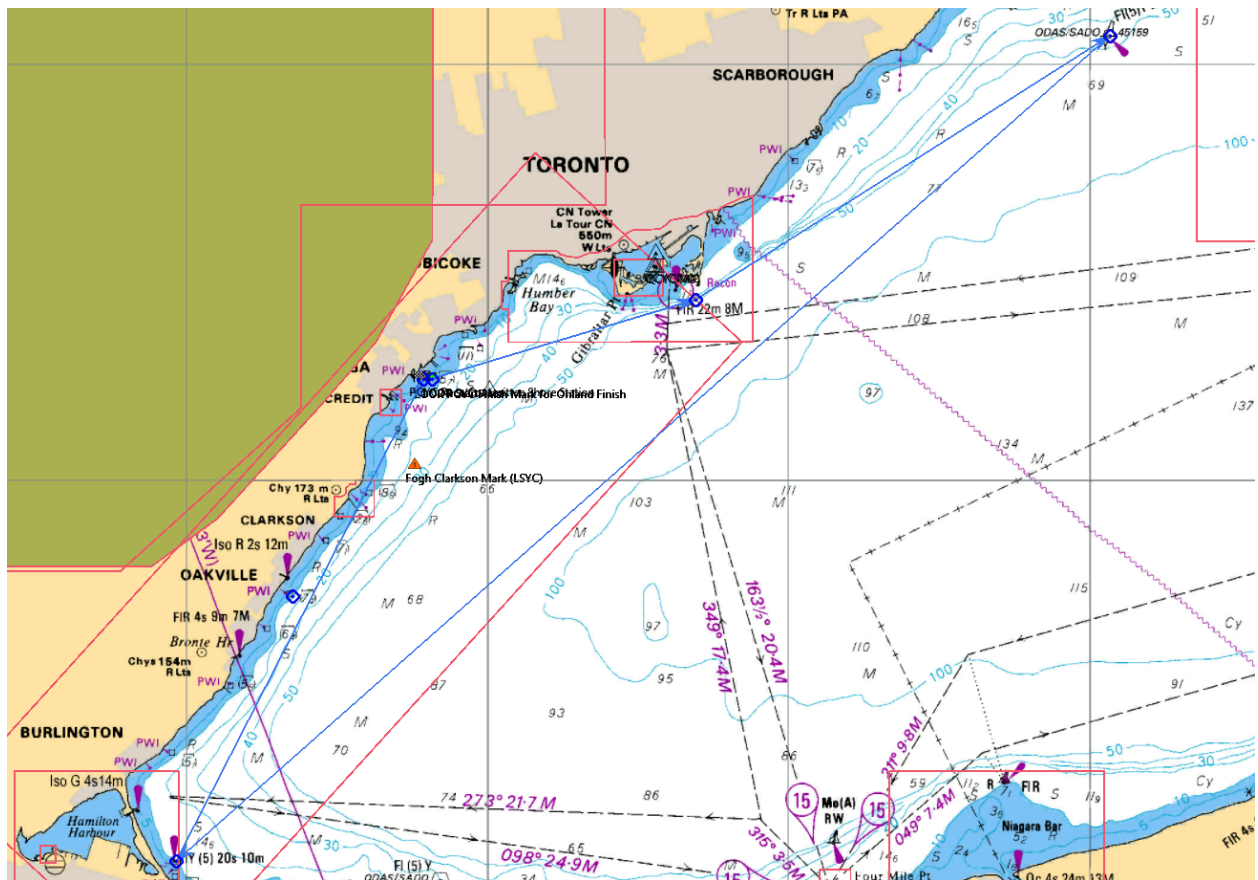
- For a description and locations of the marks, see SI 9.
- For details of the Finish, see SI 12

Diagram 3
Race 6 – DYC to PCYC – Finish



- For a description and locations of the marks, see SI 9.
- For details of the Finish, see SI 12

Diagram 4 **Race 4 – Long Distance - Course** **(See SI 9)**



Not to be used for navigation.

Diagram 5 Location of Other Documents on Race Document Web Site

**The Registration and Race Document Web Site is
<https://yachtscoring.com/emenu.cfm?eID=13260>**

2020 Lake Ontario Short-Handed Racing Series
Port Credit Yacht Club
Mississauga, Ontario, Canada
September 19 & 20, 2020

- [Online Entry Form / Application](#)
(Start your Race Entry Process Here...)
- [Owner's Corner \(login\)](#)
(Payment, Crew List, Info Update, etc...)
- [Crew's Corner \(login\)](#)
(Crew Info Update)
- [Current Entry List](#)
- [Scratch Sheet](#)
- [Race Results](#)
- [Scrolling Display Screens](#)
(Scratch Sheet, Results, etc)

SF [SailFlow Weather Forecast](#)

- A** • [Notice of Race](#)
- [Sailing Instructions](#) **B**
- C** • [Unofficial Notice Board](#)
- [RC Announcements - \(No Announcements\)](#)
- [Documents & Forms](#) **D**
- E** • [Subscribe to Event News](#)
- [Press / Media Registration](#)
- [Event Contacts](#)
- [Crew/Boat/Charter Board](#)
- [General Race Forms](#)

[Regatta / Event Web Site](#)
[Port Credit Yacht Club](#)
[Select Another Event](#)

- A** Click here for NOR **C** Click here for RC Announcements **E** Click here for link to other associated web sites, i.e., book dock at PCYC, etc.
- B** Click here for SIs **D** Click here for other documents, i.e., LOOR OSR, Splits, etc.

Contact Information

LO300

Web site www.loor.ca
Email racecommittee@loor.ca
Phone 1-866-462-8828

PCYC

Web site www.pcyg.net
Phone 905-278-7911
FAX 905-278-2519