

Updated 9/16



2021 Rolex Big Boat Series

J/88 North American Championship

Express 37 Pacific Coast Championship

September 15-19, 2021

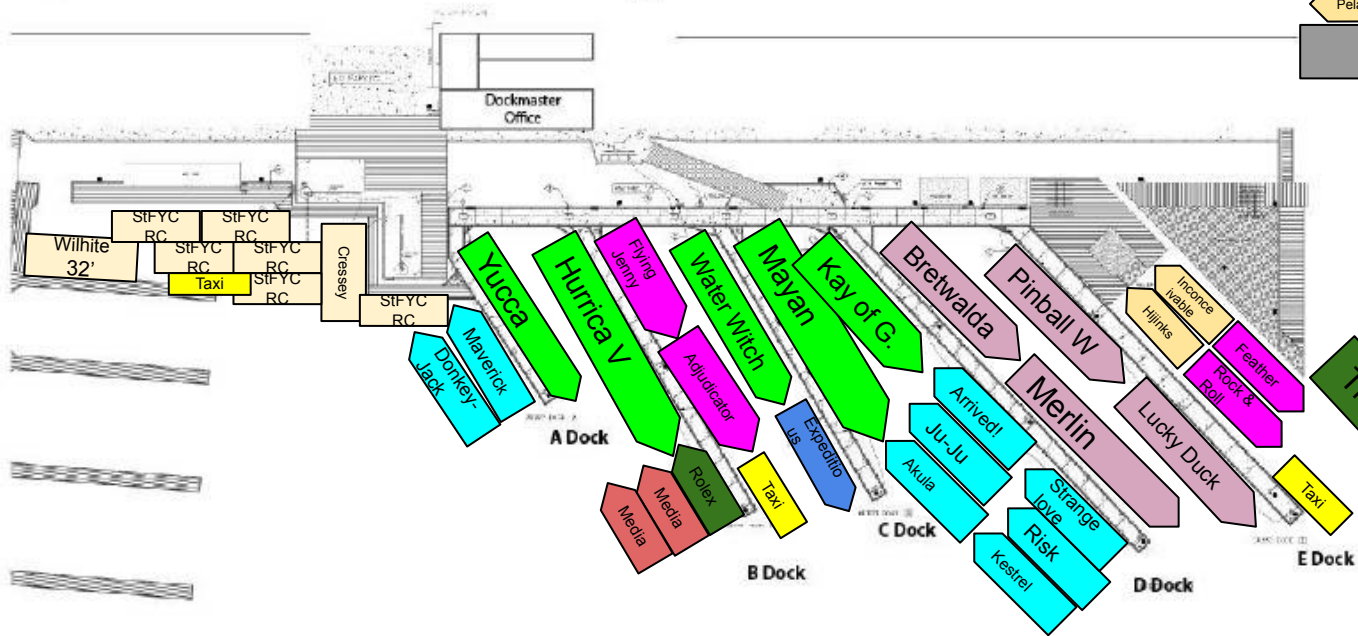
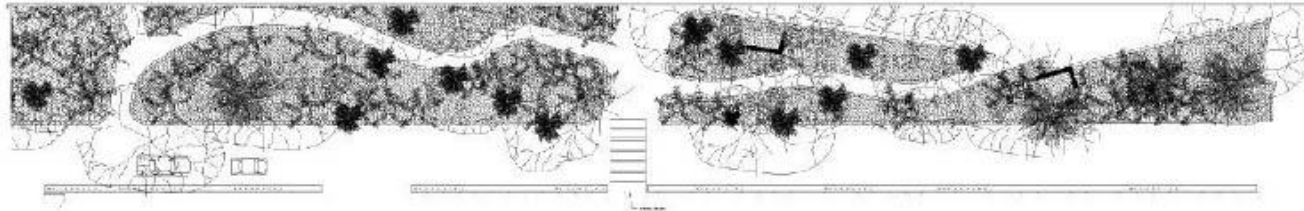
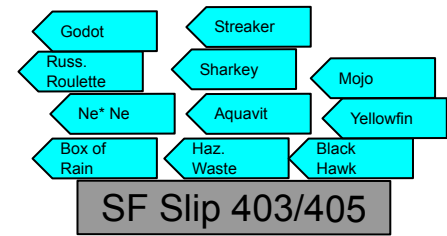
DOCKING PLAN

WEST BASIN			
BOAT NAME	SLIP ASSIGNMENT		
Box of Rain	End Tie 403/405 (raft)		
Blackhawk	End Tie 403/405 (raft)		StFYC DOCKS
Russian Roulette	End Tie 403/405 (raft)		REFER TO DOCKING PLAN
Yellowfin	End Tie 403/405 (raft)		Adjudicator
Hazardous Waste	End Tie 403/405 (raft)		Akula
Aquavit	End Tie 403/405 (raft)		Arrived!
Sharkey	End Tie 403/405 (raft)		Bretwalda 3
Ne* Ne	End Tie 403/405 (raft)		Brigadoon
Streaker	End Tie 403/405 (raft)		Donkey Jack
Godot	End Tie 403/405 (raft)		Expeditious
Tiny Tim, Sandpiper	Slip # 143 (raft)		Feather
Spirit, 1FA	Slip # 143 (raft)		Hijinks
Cool Story Bro	Slip # 181 (raft)		Hurrica V
Flotek, Jolene	Slip # 181 (raft)		Inconceivable
Bodacious +	End Tie # 221		Ju-Ju
Loca Motion	End Tie # 241		Kay of Goteborg
Invictus	End Tie # 243		Kestrel
Arsenal	End Tie # 277		Lucky Duck
Rufless	End Tie # 279		Maverick
Kuai	Slip # 333		Mayan
pHat-Jack	Slip # 335		Media / VIP Boat
StFYC J-80	Slip # 807		Merlin
Eclipse	Slip #103		Pinball Wizard
Favonius	Slip #133		Risk
Chance	Slip #155		Rock and Roll
Azure	Slip # 169		Rolex Media Boat
Media Boat/ VIP	Slip # 195		SFYC Media Boat
Media Boat / VIP	Slip # 659		Strange Love
Wildcard	Slip #209		Water Witch
Duende	Slip # 219		Yucca
Spindrift	Slip # 251		Flying Jenny
Swift Ness	Slip # 253		
Limitless	Slip # 343		
Sapphire	Slip # 349		GGYC Docks
Elusive	Slip # 385		Slip Assignment
Peregrine	Slip # 411		Destin
Mojo	Slip # 449		Annabelle (Signal Boat)
Split Water	Slip # 457		Nuckelavee
Media Boat / VIP	Slip # 503		
Courageous	Slip #515		
Grace	Slip # 527		
Eight Ball	Slip # 563		
White Shadow	Slip # 567		
Stewball	Slip # 585		
Elan	Slip # 625		
J-70: Kangaroo Jockey	Slip # 629 (a)		
J-70: Rampage	Slip # 629 (b)		
J-88: Butcher	Slip #693 (a)		

2021 RBBS
9/13-9/20

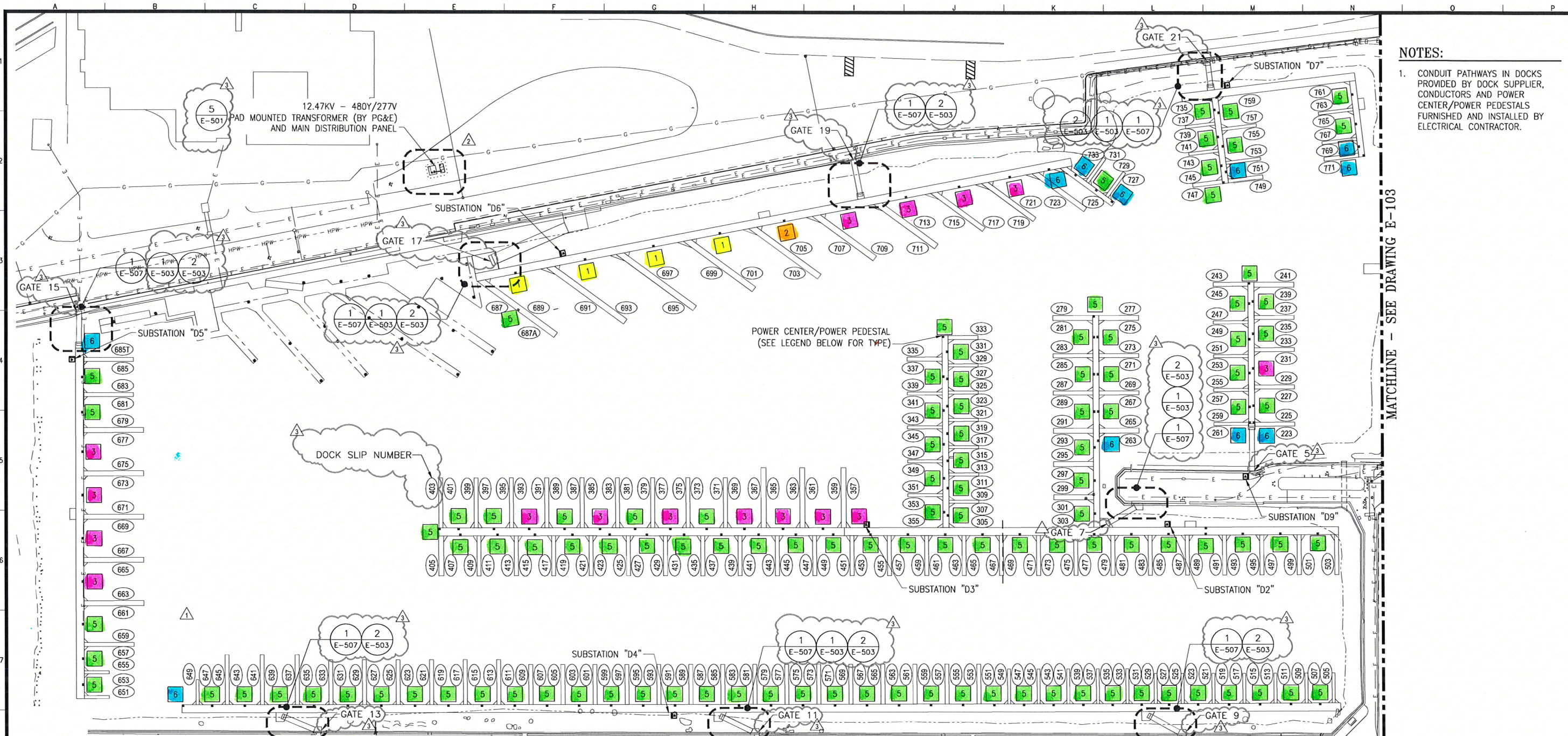
UPDATED 9/14

St. Francis Yacht Club
San Francisco Dock Layout
2021



SCALE: 1" = 50', FULL SIZE 8.5 X 11

St. Francis Yacht Club Guest Docks
Waterfront Director: Pierce Forgione (415) 813-9741 & VHF 69
Dockmaster: Sean Cohan (415) 813-9741 & VHF 69

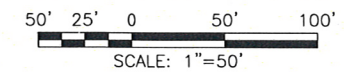
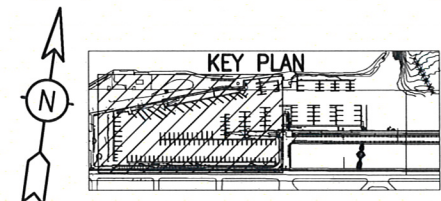


NOTES:
 1. CONDUIT PATHWAYS IN DOCKS PROVIDED BY DOCK SUPPLIER, CONDUCTORS AND POWER CENTER/POWER PEDESTALS FURNISHED AND INSTALLED BY ELECTRICAL CONTRACTOR.

MATCHLINE - SEE DRAWING E-103

- LEGEND:**
- 1 DUAL 1-100A/1-50A POWER PEDESTAL (100A @ 208V / 50A @ 208V)
 - 2 DUAL 1-100A/1-50A & 2-50A POWER PEDESTAL (100A @ 208V / 50A @ 208V & 50A @ 208V)
 - 3 DUAL 1-50A (208V) & 1-50A (125V) POWER PEDESTAL
 - 4 ~~2-50A & 1-50A/1-30A POWER PEDESTAL~~ TYPE 4 PEDESTAL NOT USED
 - 5 DUAL 1-50A/1-30A POWER PEDESTAL (50A @ 125V / 30A @ 125V)
 - 6 SINGLE 1-50A/1-30A POWER CENTER (50A @ 125V / 30A @ 125V)

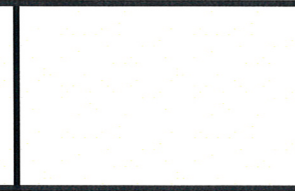
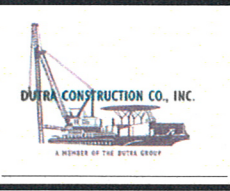
1 ENLARGED SITE PLAN - WEST
 E-102 SCALE: 1"=50'



FINAL SUBMITTAL 10/5/11

NO.	DATE	DESCRIPTION	BY	APP.
10/5/11		FINAL SUBMITTAL - REV. 3	NS	-
8/5/11		ESOC FINAL SUBMITTAL - REV. 2	NS	-
6/24/11		ESOC FINAL SUBMITTAL - REV. 1	NS	-
5/27/11		ESOC FINAL SUBMITTAL	NS	-

TABLE OF REVISIONS
 CHECK WITH TRACING TO SEE IF YOU HAVE LATEST REVISION



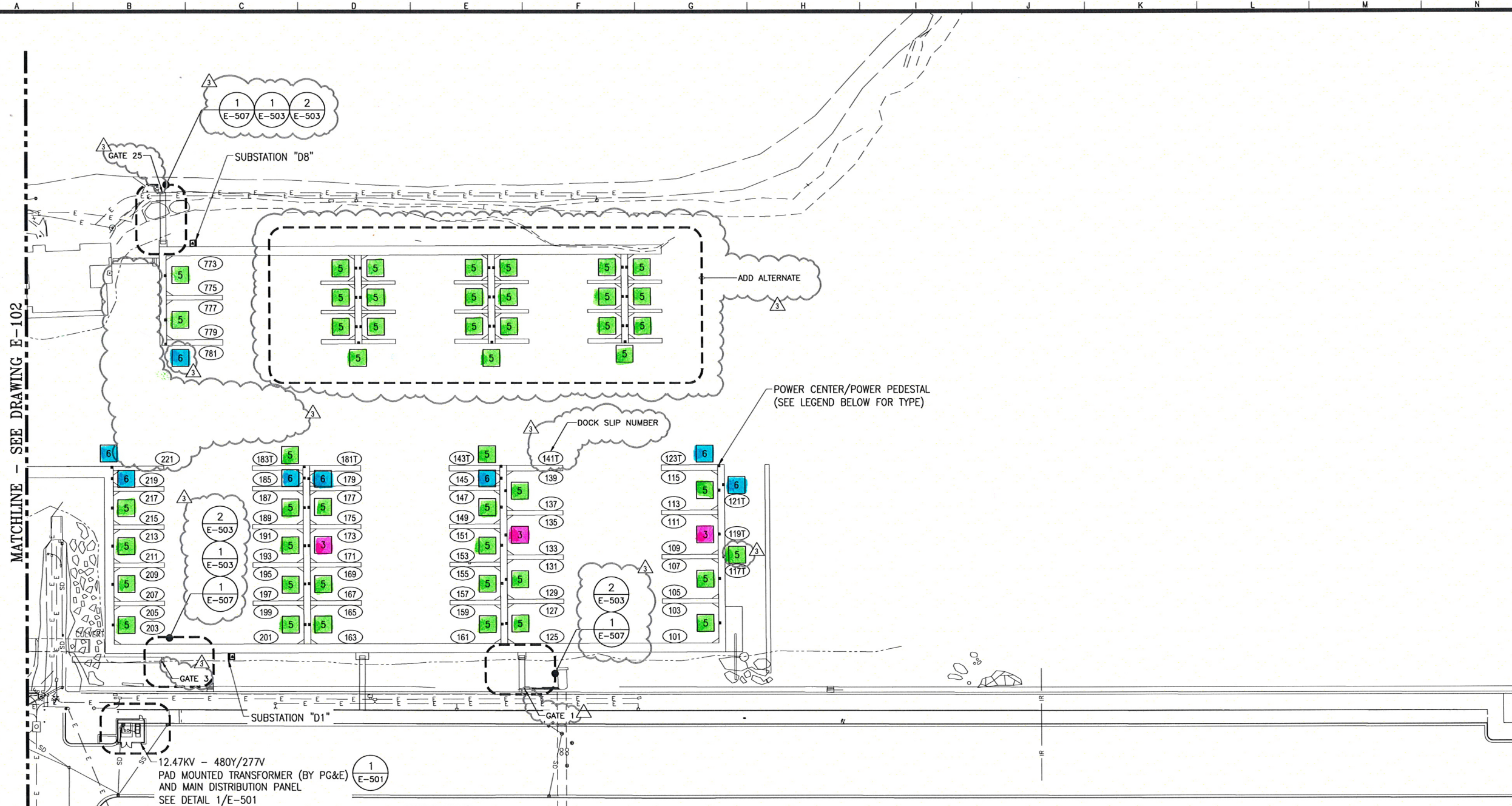
DESIGNED: NS	DATE: 10/5/11	APPROVED:	SCALE: AS SHOWN
DRAWN: DB	DATE: 10/5/11	SECTION MANAGER:	SHEET OF SHEETS: 256 of 346
CHECKED: RR	DATE: 10/5/11	DEPUTY MANAGER:	
		CITY ENGINEER:	

SAN FRANCISCO RECREATION & PARKS DEPARTMENT	
WEST HARBOR MARINA RENOVATION	
ENLARGED SITE PLAN WEST	

SPECIFICATION NO.	
DRAWING NO.	E-102
FILE NO.	12593 E-102
REV. NO.	3

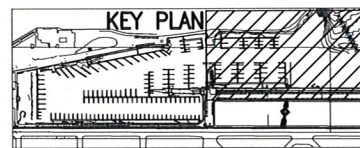
Drawing Path: U:\JOBS\INDUSTRIAL\ACTIVE\2011\12593 91100819 DUTRA-SAN FRAN-MARINA\Drawings\Working Drawings\12593 E-102.dwg. Login: DoolBigo
 Dimension Scale: 1"=50'
 Model Units: Undefined
 Plot Time: Fri, 30 Sep 2011 - 3:48pm

NOTES:
 1. CONDUIT PATHWAYS IN DOCKS PROVIDED BY DOCK SUPPLIER, CONDUCTORS AND POWER CENTER/POWER PEDESTALS FURNISHED AND INSTALLED BY ELECTRICAL CONTRACTOR.



- LEGEND:**
- 1 DUAL 1-100A/1-50A POWER PEDESTAL (100A @ 208V / 50A @ 208V)
 - 2 DUAL 1-100A/1-50A & 2-50A POWER PEDESTAL (100A @ 208V / 50A @ 208V & 50A @ 208V)
 - 3 DUAL 1-50A (208V) & 1-50A (125V) POWER PEDESTAL
 - 4 ~~DUAL 2-50A & 1-50A/1-30A POWER PEDESTAL~~ TYPE 4 PEDESTAL NOT USED
 - 5 DUAL 1-50A/1-30A POWER PEDESTAL (50A @ 125V / 30A @ 125V)
 - 6 SINGLE 1-50A/1-30A POWER CENTER (50A @ 125V / 30A @ 125V)

1 ENLARGED SITE PLAN - EAST
 E-103 SCALE: 1"=50'

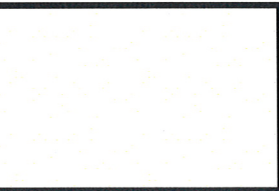
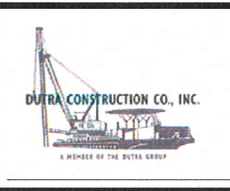


50' 25' 0 50' 100'
 SCALE: 1"=50'

FINAL SUBMITTAL 10/5/11

NO.	DATE	DESCRIPTION	BY	APP.
10/5/11		FINAL SUBMITTAL - REV. 3	NS	-
8/5/11		ESOC FINAL SUBMITTAL - REV. 2	NS	-
6/24/11		ESOC FINAL SUBMITTAL - REV. 1	NS	-
5/27/11		ESOC FINAL SUBMITTAL	NS	-

TABLE OF REVISIONS
 CHECK WITH TRACING TO SEE IF YOU HAVE LATEST REVISION



DESIGNED: NS	DATE: 10/5/11	APPROVED:	DATE:
DRAWN: DB	DATE: 10/5/11	SECTION MANAGER:	DATE:
CHECKED: RR	DATE: 10/5/11	DEPUTY MANAGER:	DATE:
		CITY ENGINEER:	DATE:

SCALE: AS SHOWN	SHEET OF SHEETS: 257 of 346
-----------------	-----------------------------

SAN FRANCISCO RECREATION & PARKS DEPARTMENT	
WEST HARBOR MARINA RENOVATION	
ENLARGED SITE PLAN EAST	


SPECIFICATION NO.	
DRAWING NO.	E-103
FILE NO.	12593 E-103
REV. NO.	3

Drawing Path: U:\JOBS\INDUSTRIAL\ACTIVE\2011\12593 91100819 DUTRA-SAN FRAN-MARINA Drawings Working Drawings\12593 E-103.dwg. Login: DapBigo
 Dimension Scale: 1
 Model Units: Undefined
 Plot Time: Fri, 30 Sep 2011 - 3:49pm

Untitled Map

Write a description for your map.

Legend

 The Wave Organ

