



# 2021 Leukemia Cup Regatta

Organizing Authority (OA): Charleston Ocean Racing Association (CORA)  
(*this supercedes and amends the NOR*)

September 10-11, 2021  
Charleston, SC

## SAILING INSTRUCTIONS

(version 09/08/2021)

### 1 RULES

The regatta will be governed by the rules as defined in *The Racing Rules of Sailing* (RRS).

### 2 CHANGES TO SAILING INSTRUCTIONS

Any changes to the Sailing Instructions (SI) will be announced over the official VHF channel before the start time or warning signal for the first boat.

### 3 COMMUNICATIONS WITH COMPETITORS

3.1 Notices to the competitors will be posted on the official notice board on-line at the event website:  
<https://yachtscoring.com/emenu.cfm?eid=14687>

3.2 A boat intending to race shall check in with the Race Committee (RC) using the boat name, sail number and class using VHF 74 or by verbal hail and continue to do so until acknowledged by RC.

3.3 Once acknowledged, boats shall switch and monitor VHF 73 for all further race communications.

3.4 RC may report visual signals displayed on VHF 73. Information reported is provided as a courtesy to competitors and does not in any way alter any competitor's responsibility to observe the RC visual signals, which govern the conduct of the racing. Errors or omissions in courtesy broadcasts will not be grounds for redress.

### 4 SIGNALS MADE ASHORE

No postponement signals (AP) will be made ashore. All announcements will be made over the official VHF channel.

### 5 SCHEDULE OF RACES

|          |              |      |  |
|----------|--------------|------|--|
| Saturday | September 11 | 1025 | Scheduled first start time or warning signal |
|----------|--------------|------|--|

## **6 CLASS FLAGS**

- 6.1 Class flags will not be displayed for the Castle Pinckney Distance race as the start is pursuit style.
- 6.2 CORA Wednesday Night courses: A class – pink, B class – green, C class – yellow, D class – light blue

## **7 RACING AREA**

The racing area will be inside Charleston Harbor.

## **8 COURSES**

- 8.1 Castle Pinckney Distance racecourses are further described in SI Attachment #1.
- 8.2 Wednesday Night CORA racecourses are further described in SI Attachment #2.

## **9 MARKS**

- 9.1 Castle Pinckney Distance racecourses:  
Start/Finish marks – CYC dock/Castle Pinckney flagpole *G27 – G FL G 2.5S 5M*  
*BP – FL (2+1) R 6S 5M* *R34 – R Q R 4M*  
*R2 – R FL R 2.5S 5M* *G37 – G FL G 4S*
- 9.2 Additional marks for Wednesday Night CORA racecourses:  
*R4 – Fl R 4s (0.25 nm NNE of BP)*  
*J – Yellow cylindrical buoy (0.34 nm N of S/F line)*

## **10 OBSTRUCTIONS**

The following areas are designated as obstructions: Middle Ground, Castle Pinckney and all Commercial vessels including dredging operations.

## **11 THE START**

- 11.1 Castle Pinckney Distance race: the start will be pursuit style where each vessel will be given a specific GPS start time which will be posted on the official on-line notice board.
- 11.2 CORA Wednesday Night courses will be started in accordance with RRS 26.
- 11.3 The course to be sailed may be announced at the Skippers Meeting and displayed on the course board.
- 11.4 The starting area will be in the vicinity of the CYC dock. The starting line will be between a staff displaying an orange flag on the CYC dock and the Castle Pinckney flagpole.
- 11.5 Boats who are not within five minutes of their starting time shall avoid the starting area which is defined as 100 yards in all directions from the starting line.
- 11.6 A boat that has not met the definition of *start* within 4 minutes of her assigned starting time or starting signal will be scored Did Not Start (DNS) without a hearing.

## **12 CHANGE OF THE NEXT LEG OF THE COURSE**

There will be no course changes unless RC decides to shorten or abandon a race per RRS 32.

## **13 THE FINISH**

The finishing line will be between a staff displaying a blue flag on the CYC dock and the Castle Pinckney flagpole.

## **14 PENALTY SYSTEM**

RRS Appendix V shall apply.

## **15 TIME LIMITS**

The time limit shall be 6 hours. Additionally, boats failing to finish within 50 minutes after the first boat sails the course and finishes may be scored TLE (number of finishers +2 points) or finished in place. This is added to RRS A10.

## 16 HEARING REQUESTS

A boat intending to protest shall comply with RRS 61. Added to RRS 61 is: “Additionally, boats shall report to the RC, as soon as possible after finishing, their sail number and the sail number(s) of the protested boat(s).”

## 17 SCORING

- 17.1 For the Castle Pinckney Distance race, boats will be scored in order of their finish place as they cross the finish line. If the race is shortened, boats will be scored using PHRF ToD (time on distance).
- 17.2 For a Wednesday Night CORA racecourse, boats will be scored using PHRF ToT (time on time).
- 17.3 The scoring system in RRS Appendix A will be used except that no scores will be excluded.
- 17.4 One race in a class is required to be completed to constitute a series for that class.

## 18 SAFETY REGULATIONS

- 18.1 Each competitor is solely responsible for his own safety and, by participation, agrees to sail at his or her own risk. Leukemia Cup Regatta, RC, ChYC, CYC-SC, CORA nor other persons assisting with the conduct of races shall be responsible for damage or injury suffered during races or related activities up to and including death.
- 18.2 A boat that retires from the race or leaves the course area shall notify the RC as soon as reasonably possible.
- 18.3 There may be a courtesy announcement on the designated VHF channel in the morning to communicate expected commercial traffic needs to the fleet. Boats are reminded that Charleston Harbor and its approaches have a high level of commercial traffic.
- 18.4 Boats shall monitor and keep clear of all commercial traffic and dredging operations. Boats that hinder commercial traffic to the point of five horns or interfere with dredging operations are subject to protest by the RC and may be scored DSQ for that race without a hearing.

## 19 PRIZES

Prizes will be awarded to the top boat overall and to the top 3 boats in each class.

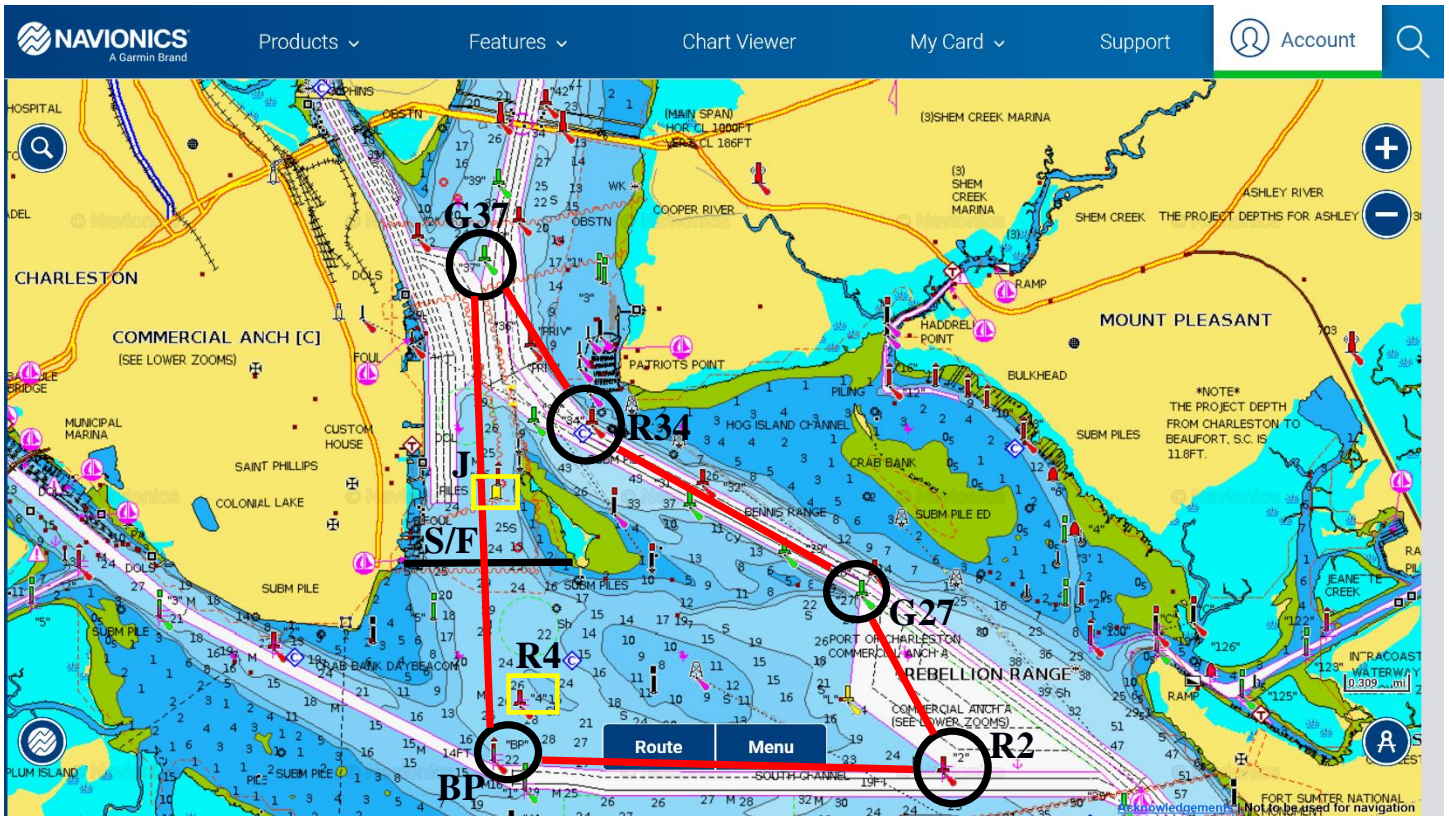
## 20 RISK STATEMENT

- 20.1 RRS 3 states: ‘The responsibility for a boat’s decision to participate in a race or to continue to race is hers alone.’ By participating in this event each competitor agrees and acknowledges that sailing is a potentially dangerous activity with inherent risks. These risks include strong winds and rough seas, sudden changes in weather, failure of equipment, boat handling errors, poor seamanship by other boats, loss of balance on an unstable platform and fatigue resulting in increased risk of injury. **Inherent in the sport of sailing is the risk of permanent, catastrophic injury or death by drowning, trauma, hypothermia or other causes.**
- 20.2 The Leukemia and Lymphoma Society, RC, ChYC, CYC-SC, CORA and their employees and volunteers do not accept responsibility for the loss of life or injury to participants or others, or for the loss or damage to any vessel in any way or from any cause during or relating to the event.

## 21 INSURANCE

Each participating boat shall be insured with valid, third party liability insurance with a minimum coverage of \$250,000 USD per event or the equivalent.

# SI Attachment #1 - Castle Pinckney Distance race



**Course N1 (start North, 1-lap):**  
Start, G37s, R34p, G27s, R2s, BPp, Finish

**Course N2 (start North, 2-laps):**  
Start, G37s, R34p, G27s, R2s, BPp, G37s, R34p, G27s, R2s, BPp, Finish

**Course S1 (start South, 1-lap):**  
Start, BPp, R2p, G27p, R34s, G37p, Finish

**Course S2 (start South, 2-laps):**  
Start, BPp, R2p, G27p, R34s, G37p, BPp, R2p, G27p, R34s, G37p, Finish

# SI Attachment #2 – CORA Wednesday Night courses

\*\*\*Note: see yellow boxes in SI Attachment #1 diagram to locate marks J and R4\*\*\*

### COURSE 1 - 5.05 NM

|                       |           |
|-----------------------|-----------|
| START                 |           |
| RG "BP" FI (2+1) R 6s | PORT      |
| R "2" FI R 2.5s       | PORT      |
| R "4" FI R 4s         | STARBOARD |
| FINISH                |           |

### COURSE 7 – 8.67 NM

|                       |           |
|-----------------------|-----------|
| START                 |           |
| RG "BP" FI (2+1) R 6s | PORT      |
| R "2" FI R 2.5s       | PORT      |
| RG "BP" FI (2+1) R 6s | PORT      |
| R "2" FI R 2.5s       | PORT      |
| R "4" FI R 4s         | STARBOARD |
| FINISH                |           |

### COURSE 8 – 12.29NM

|                       |           |
|-----------------------|-----------|
| START                 |           |
| RG "BP" FI (2+1) R 6s | PORT      |
| R "2" FI R 2.5s       | PORT      |
| RG "BP" FI (2+1) R 6s | PORT      |
| R "2" FI R 2.5s       | PORT      |
| RG "BP" FI (2+1) R 6s | PORT      |
| R "2" FI R 2.5s       | PORT      |
| R "4" FI R 4s         | STARBOARD |
| FINISH                |           |

### COURSE 9 – 5.50 NM

|                       |           |
|-----------------------|-----------|
| START                 |           |
| RG "BP" FI (2+1) R 6s | PORT      |
| "J"                   | PORT      |
| RG "BP" FI (2+1) R 6s | PORT      |
| "J"                   | PORT      |
| R "4" FI R 4s         | STARBOARD |
| FINISH                |           |

### COURSE 10 - 7.60 NM

|                       |           |
|-----------------------|-----------|
| START                 |           |
| RG "BP" FI (2+1) R 6s | PORT      |
| "J"                   | PORT      |
| RG "BP" FI (2+1) R 6s | PORT      |
| "J"                   | PORT      |
| RG "BP" FI (2+1) R 6s | PORT      |
| "J"                   | PORT      |
| R "4" FI R 4s         | STARBOARD |
| FINISH                |           |

### COURSE 13 – 9.31 NM

|                       |           |
|-----------------------|-----------|
| START                 |           |
| RG "BP" FI (2+1) R 6s | PORT      |
| G "37" FI G 4s        | PORT      |
| RG "BP" FI (2+1) R 6s | PORT      |
| G "37" FI G 4s        | PORT      |
| R "4" FI R 4s         | STARBOARD |
| FINISH                |           |

### COURSE 14 – 9.69 NM

|                       |      |
|-----------------------|------|
| START                 |      |
| RG "BP" FI (2+1) R 6s | PORT |
| G "37" FI G 4s        | PORT |
| RG "BP" FI (2+1) R 6s | PORT |
| G "37" FI G 4s        | PORT |
| RG "BP" FI (2+1) R 6s | PORT |
| FINISH                |      |

### COURSE 15 – 7.41 NM

|                       |           |
|-----------------------|-----------|
| START                 |           |
| RG "BP" FI (2+1) R 6s | PORT      |
| G "37" FI G 4s        | PORT      |
| RG "BP" FI (2+1) R 6s | PORT      |
| "J"                   | PORT      |
| R "4" FI R 4s         | STARBOARD |
| FINISH                |           |

### COURSE 21 – 8.09 NM

|                       |      |
|-----------------------|------|
| START                 |      |
| G "37" FI G 4s        | PORT |
| RG "BP" FI (2+1) R 6s | PORT |
| G "37" FI G 4s        | PORT |
| RG "BP" FI (2+1) R 6s | PORT |
| FINISH                |      |

### COURSE 22 – 7.71 NM

|                       |           |
|-----------------------|-----------|
| START                 |           |
| G "37" FI G 4s        | PORT      |
| RG "BP" FI (2+1) R 6s | PORT      |
| G "37" FI G 4s        | PORT      |
| R "4" FI R 4s         | STARBOARD |
| FINISH                |           |





# 2021 Leukemia Cup Regatta

September 10-11, 2021  
Charleston, SC

## SAFETY INFORMATION

### IN CASE OF AN EMERGENCY ON THE WATER:

Please contact the Race Committee on VHF **Channel 73**; you will then be instructed to switch to VHF **Channel 71** for further transmissions.

Emergencies requiring medical assistance: Once on site, the Safety Boat will gather pertinent information and if necessary, **call 911** and proceed to Carolina Yacht Club with the injured person to meet with EMS personnel. If an emergency warrants additional support, the USCG may be contacted on VHF Channel 16 for further instructions.