

# 2021 J/24 & J/22 East Coast Championship

Sailing Instructions  
October 22 - 24, 2021



Organizing Authority: Severn Sailing Association, J/24 Fleet 8 & J/22 Fleet 19  
Severn Sailing Association, 311 First Street, Annapolis, Maryland 21403  
(410) 268-8744

*The notation (DP) in a rule in the sailing instructions (SI) or notice of race means that the penalty for the breach of that rule may, at the discretion of the protest committee, be less than disqualification. This changes RRS 60.1(a).*

## 1 RULES

- 1.1 The regatta will be governed by the rules as defined in *The 2021-2024 Racing Rules of Sailing* (RRS) and the appropriate J Class rules.
- 1.2 If there is a conflict between the Notice of Race (NOR) and these Sailing Instructions (SI), the SI will take precedence. This changes RRS 63.7.

## 2 NOTICES TO COMPETITORS

- 2.1 Notices to competitors will be posted electronically on the Official Notice Board (ONB) at [https://yachtscoring.com/notice\\_board\\_summary.cfm?eid=14700](https://yachtscoring.com/notice_board_summary.cfm?eid=14700)
- 2.2 **It is the responsibility of each competitor (skipper & crew) to familiarize themselves with & to follow SSA's Covid 19 policies, and to sign SSA's liability waiver prior to participating in the Regatta.**
- 2.3 All J/24s & J/22's must upload registration documents electronically, and all competitors must sign the SSA waiver electronically at Yacht Scoring.

## 3 CHANGES IN SAILING INSTRUCTIONS

- 3.1 Changes to the sailing instructions will be posted on the Official Notice Board board at Yacht Scoring.
- 3.2 For on-the-water changes to the sailing instructions, the change will be announced by the Race Committee (RC) verbally. This changes RRS 90.2 and Race Signals.

## 4 SIGNALS MADE ASHORE

- 4.1 Signals made ashore will be displayed from the flagstaff on the deck of SSA.
- 4.2 When flag AP is displayed ashore, "1 minute" is replaced with "not less than 60 minutes" in RRS 'Race Signals'.

## 5 SCHEDULE

- 5.1 Schedule is as follows:
  - Wed. Oct. 20  
1700 Deadline for all registration materials to be submitted electronically (including waiver to be signed by all participants)
  - Thurs. Oct. 21  
1500 - 1800 Drive-by Skipper's Packet Pickup for both J/24's & J/22's

Friday, Oct. 22

- 0900 Skippers meeting for J/24's only on the steps of the Club
- 1100 Warning signal for first race of the day – J/24's only  
After racing refreshments

Saturday, October 23

- 0830 Skipper bags available for J/22's
- 0900 Skippers meeting for J/22's only on the steps of the Club
- 1100 Warning signal for the first race of the day – J/24's & J/22's  
After racing refreshments & dinner at SSA

Sunday, Oct. 24

- 1000 Warning signal for the first race of the day J/24's & J/22's  
After Racing – Awards and refreshments

- 5.2 A total of nine races are scheduled for the J/24s & seven for the J/22's.
- 5.3 Any number of races may be sailed each day. Races not completed by the end of the last day of racing will not be sailed.
- 5.4 No warning signal will be made after 1500 on Sunday, October 24.

## **6 CLASS FLAG**

- 6.1 The class flag will be a flag displaying the 'J/24' logo or the 'J/22' logo.

## **7 RACING AREA**

- 7.1 Attachment A shows the location of the racing area.

## **8 CHECK-IN, CHECK-OUT**

- 8.1 (DP) Before the warning signal of the first race each day, each boat shall sail on starboard tack past the stern of the signal boat and hail her sail number until acknowledged by the Race Committee.
- 8.2 (DP) A boat that retires from a race, or does not intend to compete, shall make a reasonable attempt to notify the Race Committee as soon as possible (VHF Channel 69 may be used).

## **9 THE COURSES**

- 9.1 The courses will be windward/leeward as shown in Attachment A. The Race Committee will designate the course by placards with numbers on them.
- 9.2 An offset mark may be used in conjunction with Mark 1.
- 9.3 Mark 2 may be a gate consisting of two marks. If only one mark is present, it should be rounded to port.
- 9.4 No later than the warning signal the race committee signal boat will display the course and approximate compass bearing for the first leg from the starting line to Mark 1.

## **10 MARKS**

- 10.1 Rounding marks are orange cylinders or spheres.
- 10.2 Change marks will be orange tetrahedrons.
- 10.3 The starting line will be between an orange flag on the signal boat and an orange flag on a pin boat or a yellow cylinder.
- 10.4 The finishing line will be between a blue flag on a race committee boat and a yellow (or orange) cylinder.

## **11 THE START**

- 11.1 Races will be started using RRS Rule 26.
- 11.2 Recalls – As a courtesy, the Race Committee may announce the sail or bow number of the recalled boat(s) on VHF channel 69 after the starting signal. Failure of a boat to hear the recall broadcast, a boat's position in the sequence of broadcast numbers, or failure of the Race Committee to broadcast any numbers shall not be grounds for granting redress (this changes RRS 62.1(a))
- 11.3 When RRS 30.4 (Black Flag Rule) is in effect, the Race Committee shall announce the sail number of the boats that have broken RRS 30.4 via VHF channel 69, rather than displaying her sail number. This changes RRS 30.4.
- 11.4 If flag U has been displayed as the preparatory signal, no part of a boat's hull, crew, or equipment shall be in the triangle formed by the ends of the starting line and the first mark during the last minute before her starting signal. If a boat breaks this rule and is identified, she shall be disqualified without a hearing but not if the race is restarted or resailed. When the U flag is used as the preparatory signal, RRS 29.1 does not apply.

## **12 CHANGE OF THE NEXT LEG OF THE COURSE**

- 12.1 To change the next leg of the course, the Race Committee will lay a new mark (or move the finishing line). The new mark will be a tetrahedron. When, in a subsequent change of course, a new mark is placed, it will be with an original mark. This changes RRS 33(C).

## **13 TIME LIMITS**

- 13.1 If no boat passes mark 1 for the first time within 30 minutes after the start, the race will be abandoned.
- 13.2 If no boat finishes within 90 minutes, the race will be abandoned.
- 13.3 Boats racing 20 minutes after the first boat finishes, and not thereafter retiring, being disqualified, or given redress, will be scored Time Limit Expired (TLE), see SI 16.3, and should proceed to the starting area if another race is scheduled.

## **14 PENALTY SYSTEM**

- 14.1 RRS US Sailing Prescription Appendix V, Alternative Penalties, will apply.
- 14.2 Hearings conducted in accordance with the rules of RRS Part 5, (Hearings & Decisions) will be virtual hearings and parties, parties representatives & witnesses shall have access to a device that has internet accessibility with audio & video capability; parties & witnesses must use audio & video to appear before a hearing panel unless advised by the hearing panel.

## **15 PROTESTS AND ARBITRATION**

- 15.1 Protest forms are available on the physical Notice Board on the lower level of the Club. Protests shall be delivered to the Race Committee within the protest time limit.
- 15.2 The protest time limit is 60 minutes after the Race Committee signal boat docks after the last race of the day. The RC will post the docking time on the Official Notice Board.
- 15.3 The Race Committee will post a list of penalties being assigned by the Race Committee prior to the end of protest time limit on the ONB. The deadline for requesting redress based on these scores will be either 30 minutes after posting of the penalty notice or the protest time limit, whichever is later.
- 15.4 The scheduled times and locations of virtual hearings will be posted on the Official Notice Board as soon as practical but no later than 30 minutes after the protest time limit.
- 15.5 Arbitration may be used prior to the protest hearing for incidents involving the rules of

Part 2 or RRS 31.

**16 SCORING**

- 16.1 One races constitutes a regatta.
- 16.2 Each boat's series score shall be the total of her race scores. This changes RRS A2.
- 16.3 The score (prior to application of other penalties) of boats scored TLE will be points equal to the number of boats finishing within the time limit plus one point by the Race Committee without a hearing. This changes RRS A4.2, A5, and A11.

**17 REPLACEMENT OF CREW OR EQUIPMENT – J-24's only**

- 17.1 Crew substitutions must be declared at Registration by filling out a Crew Substitution Form and submitting electronically with Registration materials. Any later changes must be approved by the Regatta Chair and posted on the ONB by 0830 on the day of racing.
- 17.2 J-24 class rule C.10.2 is amended to include class rule J.2 allowing an extra spinnaker to be carried while racing.

**18 TRASH DISPOSAL**

- 18.1 Boats shall not put trash or recyclable material in the water. Trash shall be kept aboard and shall be deposited in a trash or recycling receptacle on shore.

**19 HAUL-OUT RESTRICTIONS – J-24's only**

- 19.2 J-24's shall not be hauled out during the regatta except with and according to the terms of prior written permission of the Race Committee.

**21 COMMERCIAL TRAFFIC**

- 21.1 (DP) A boat may not exercise right of way, cross in proximity to, or interfere with the reasonable transit of commercial ships, tugs, or barges. Boats must take evasive action well in advance of a potentially dangerous situation.

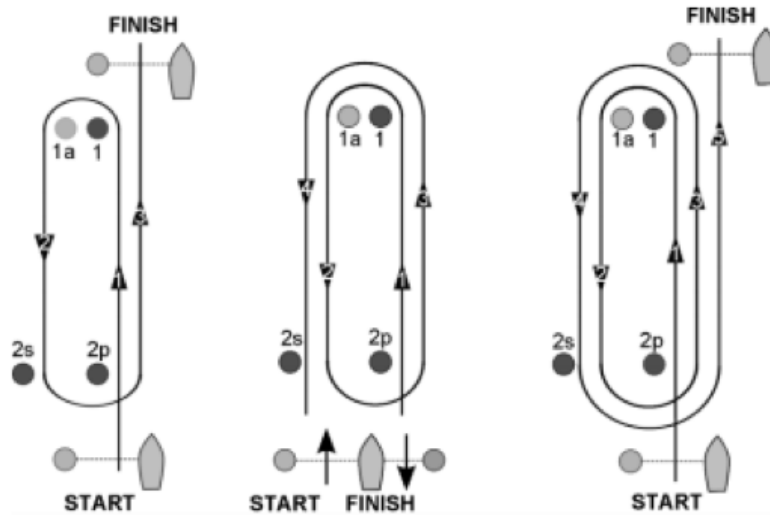
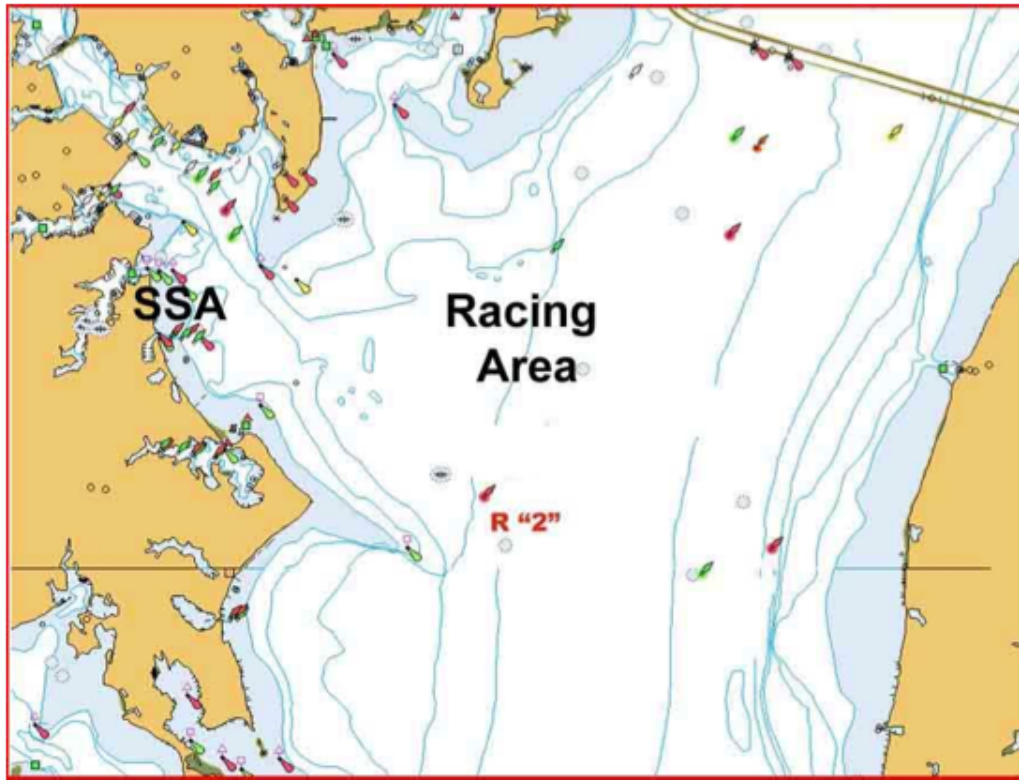
**22 PRIZES**

- 22.1 The winning helmsperson of the regatta will be named the 2021 J/24 & J/22 East Coast Champion respectively.
- 22.2 Prizes will be awarded to the top five boats in the J/24 class & top three boats in the J/22 class.

**23 MEDIA AND TELEVISION**

- 23.1 Competitors give absolute right and permission for any photograph and video footage taken of themselves or the boat they are sailing during the event, to be published in any media whatsoever, for either editorial or advertising purposes or to be used in press information.

# ATTACHMENT A - RACING AREA LOCATION



**“3”**

**“4”**

**“5”**

Course 3: Start, 1, 1a, 2s/2p, Finish Upwind

Course 4: Start, 1, 1a, 2s/2p, 1, 1a, Finish Downwind

Course 5: Start, 1, 1a, 2s/2p, 1, 1a, 2s/2p, Finish Upwind