



IHYC Classic Yacht Regatta

September 11-12, 2021
Indian Harbor Yacht Club
Greenwich, CT
Organizing Authority

SAILING INSTRUCTIONS

as amended 9/10/21

1. RULES

- 1.1. The regatta will be governed by the rules as defined in *The Racing Rules of Sailing (RRS)*.
- 1.2. For the purpose of rules 14 and 44.1(b), any contact between boats shall be considered serious damage. This changes rules Part 2 Preamble, 36(b), 44.1(b), 60.3(a)(1) and 61.1(a)(4).
- 1.3. All yachts shall observe the change of the definition of "Keep Clear" and rules changes noted in NOR 1 Rules.

2. NOTICES TO COMPETITORS

- 2.1. Notices will be posted online at yachtscoring.com.
- 2.2. The race committee intends to broadcast pertinent race information on VHF channel 05A. Failure of such information to be given or received shall not be grounds for redress. This changes rule 62.1(a).

3. CHANGES TO SAILING INSTRUCTIONS

Any changes to the sailing instructions will be posted before 0900 on Saturday, September 11.

4. SIGNALS MADE ASHORE

- 4.1. Signals made ashore will be displayed on the main flagpole at IHYC.
- 4.2. When code flag "AP" is displayed ashore, "1 minute" is replaced with "not less than 60 minutes" in the race signal "AP".

5. SCHEDULE OF EVENTS AND RACE

Friday, September 10	1800 – 2100	Boat arrival, check-in (South Patio), and Welcome Party (complimentary beer and snacks), tickets required for buffet dinner.
Saturday, September 11	0900 - 1000	Check-in continued (Ballroom)
	1000	Mandatory Competitors' Meeting (Ballroom)
	1100	Harbor Start
	1155	Warning Signal for first start.
	1800	Dinner and Awards, tickets required for dinner

Sunday, September 12

1055

1600 - Approximate

Warning Signal for first start.

Awards and snacks.

6. CLASS FLAGS

- 6.1. Class flags will be numeral pennants.
- 6.2. Class assignments will be shown on the final scratch sheet, which will be available by 1700 Friday online at www.yachtscoring.com. Owners/skippers are reminded to use the final scratch sheet as the preliminary scratch sheet is subject to change.
- 6.3. All competitors shall fly their class flag as designated on the final scratch sheet. Flags shall be flown from the permanent backstay approximately six feet above the deck. Yachts with no permanent backstay shall fly their class flag from another conspicuous location.
- 6.4. Classes may be started together. This will be indicated on the final scratch sheet along with starting order and assignment to the Long or Short Course.

7. RACING AREA

- 7.1. The racing area will be in the Long Island Sound, as shown in Addendum 3 - Racing Areas.
- 7.2. Figure 2 in Addendum 3 - Racing Area shows three red exclusion zones that shall not be entered while racing.
 - 7.2.1. The exclusion zones do not include the area immediately adjacent to race mark "A" (Gong G"1" E of Little Captain) to allow for a seamanlike rounding when "A" is designated as a rounding mark.

8. COURSES AND MARKS

- 8.1. Marks are described in Addendum 1 - Racing Mark List.
- 8.2. Yachts will sail either a Long Course or a Short Course. Long and Short course assignments will be given on the final scratch sheet.
- 8.3. A list of potential courses is given in Addendum 2 - Course List. Each course is designated by a single letter or letter-number combination: for example: Course A, Course B, course A2.
 - 8.3.1. A number in the course designation denotes the number of times around.
- 8.4. After the start, all courses proceed in the order indicated around government marks in the Long Island Sound before finishing as described in SI 12 Finish Line. Each course shows the order in which marks are to be passed and which side the marks are to be left or rounded.
- 8.5. Government marks that are not marks of the course may be passed on either side at the sole discretion of the skipper/owner.
- 8.6. Course distances are determined by the race committee and shall not be subject to redress.
- 8.7. No later than five minutes before the first warning signal, the race committee will designate the Long and Short courses by displaying on the signal boat course board the course letter underneath L for Long Course and S for Short Course.

9. PRE-START IDENTIFICATION AND RETIREMENT

- 9.1. Prior to the first warning signal, all competing yachts shall sail past the stern of the race committee boat on starboard tack and announce their yacht name, sail number and how many crew aboard.
- 9.2. A yacht retiring from the race shall inform the race committee on VHF channel 05A.

10. STARTING PROCEDURES

- 10.1. Races will be started in accordance with RRS 26, except as modified here. There will be a five minute interval between a start and the warning signal for the next division or class.
- 10.2. The initial starting sequence will be described on the final scratch sheet. It is the race committee's intention to use a pursuit-style start e.g. slower boats starting ahead of faster boats.
- 10.3. The race committee will signal individual recalls in accordance with RRS 29 and will attempt to hail boats that are OCS on VHF channel 05A. A failure to hail, the order in which hails are made, or a competitor not hearing her hail will not be grounds for redress.

11. STARTING LINE

The starting line will be between a yellow flag on the race committee signal boat and the course side of a nearby yellow inflatable tetrahedron. The starting area will be approximately .5NM South of race mark "A" - Green Gong G1 at the Eastern entrance to Captain Harbor.

12. FINISH LINE

The finish line for all boats will be between race mark "N" Captain Harbor Flat Neck Point Shoal Buoy 2 "N2" southwest of Greenwich Point and a yellow flag on the signal boat. The signal boat will display a race committee flag and an IHYC burgee.

13. TIME LIMITS

All yachts must finish the race no later than 1700hrs. Those yachts not finishing within the time limit will be scored Time Limit Expired (TLE) and be given points equal to the number of boats finishing in her fleet plus two points, but not more than Did Not Finish (DNF).

14. PROTESTS

- 14.1. A protesting yacht shall notify the race committee of its intent to protest via VHF channel 05A after crossing the finish line or upon retiring.
- 14.2. Protests shall be filed at the IHYC Front Desk as soon as possible following completion of the race but no later than one hour after the last boat's finishing time or the signal boat docking time, whichever is later. Protest hearings, if any, shall be scheduled and heard at a time and place designated by the protest committee.

15. SCORING AND TIME ALLOWANCE

Results for handicap classes will be based on CRF 2021 ratings and course distances as determined by the race committee. If applicable, one-design class(es), will be scored within their class provided there is a minimum of five boats per class.

16. PRIZES

- 16.1. Racing awards will be announced at the discretion of the Organizing Authority; Indian Harbor YC.
- 16.2. The Frank Bowne Jones Founders Cup will be awarded for the series winner based on fastest corrected time by a classic yacht on the Long Course.
- 16.3. The Spartan Trophy will be awarded for the series winner based on fastest corrected time by a yacht other than the Frank Bowne Jones Founders Cup winner on the Long Course.
- 16.4. The Victory Trophy will be awarded for the series winner based on fastest corrected time by a yacht on the Short Course.

17. RADIO USE

Race communications channel will be 05A. In addition to the competitors' meeting, the race committee will make courtesy broadcasts to inform competitors regarding postponements, general recalls and other race-related information. The absence, inaccuracy or lack of timeliness of such broadcasts shall not be grounds for granting redress. The race committee will be under no obligation to acknowledge or answer radio communications except to acknowledge retirements, protests or reports of exoneration.

18. SAIL AND EQUIPMENT LIMITATIONS

Sail and equipment limitations shall be as stated in the Notice of Race for all classes.

19. DISCLAIMER OF LIABILITY

Competitors participate in the regatta entirely at their own risk. See RRS 4, Decision to Race. The organizing authority will not accept any liability for material damage or personal injury, or death sustained in conjunction with or prior to, during or after the regatta.

20. CONTACTS

Indian Harbor Yacht Club
710 Steamboat Road
Greenwich CT, 06830

203-869-2484

waterfront@indianharboryc.com

regatta@indianharboryc.com

VHF 68

Lat. 41° 00' 40"N Lon. 73° 37' 23"W

Principal Race Officer: Commodore Raymond Griffin

Event Co-Chair: John Melvin S/Y BLACKWATCH jmelvin754@gmail.com

Event Co-Chair: Lars Forsberg S/Y SPIRIT

www.yachtscoring.com

Addendum 1 - Racing Mark List

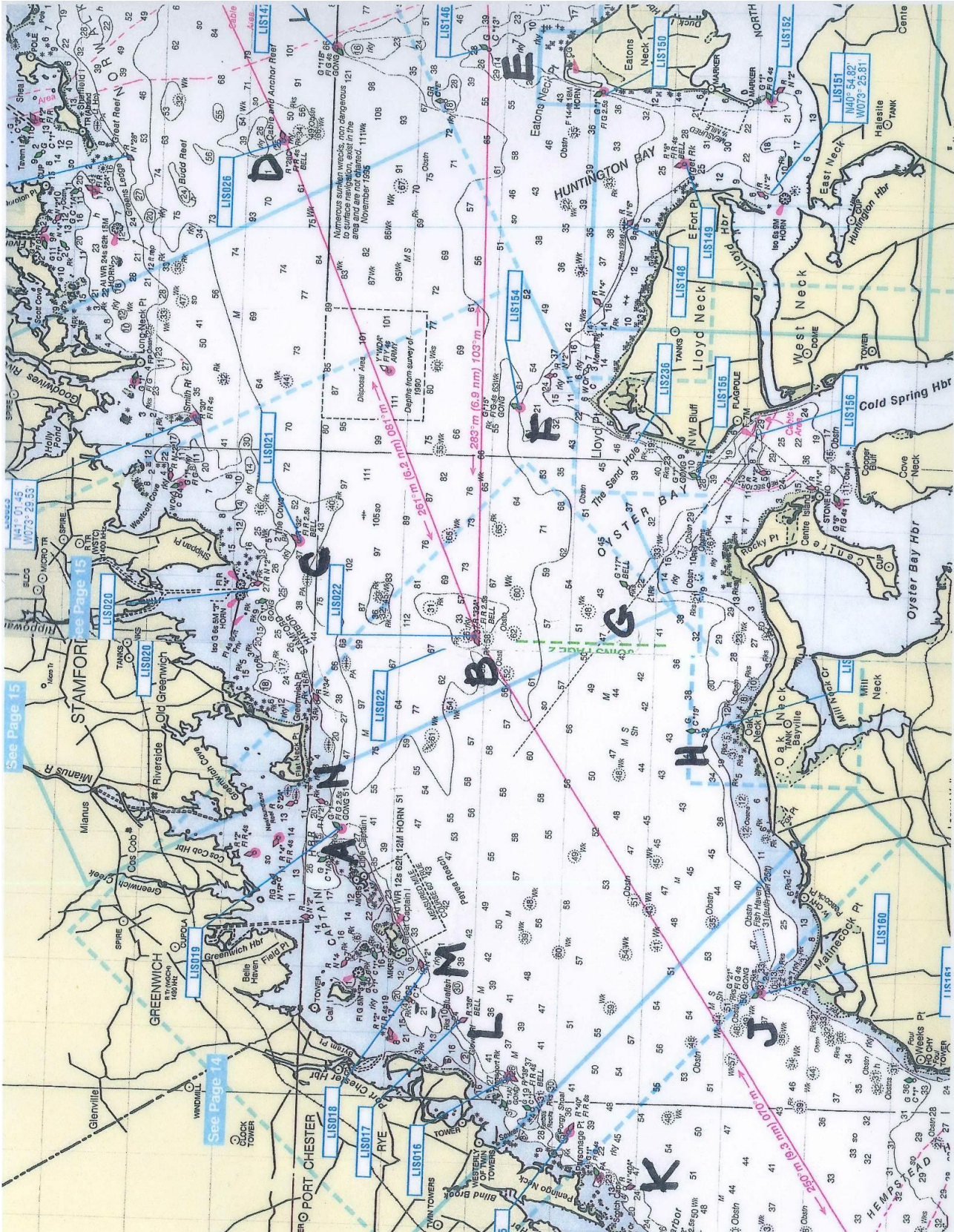
Mark	Description of Mark	Approx. Location
A	Gong G"1"	0.5 NM E of Little Captain Island
B	Bell R"32A"	2.3 NM SSE of Greenwich Point
C	Bell R"32"	0.8 NM S of Shippan Point
D	Bell R"28C"	3.4 NM N of Eatons Neck
E	Can C"13"	0.9 NM N of Eatons Neck
F	Gong G"15"	0.9 NM NNE of Lloyd Point
G	Bell G"17"	1.4 NM N of Rocky Point
H	Gong G"19"	0.6 NM N of Oak Neck Point
J	Gong G"21"	0.3 NM N of Matinecock Point
K	Nun "40A"	0.3 NM SSE of Peningo Neck
L	Bell R"36"	1.0 NM SW of Great Captain
M	Nun N"2"	0.2 NM SSW of Great Captain Island
N	Nun N"2"	0.4 NM ENE of Great Captain Island

Addendum 2 - Course List (See SI 8.3)

Course	Rounding Order of Marks	Distance (NM)
A	Ds Js	27.7
B	Ds Gs	19.3
C	Cs Bs As Cs Bs	16.8
D	Cs Gs Bp	11.9
E	Cs Bs	8.4
F	Bp	5.1
G	Cs Fs	11.6
H	Bs Gs	8.8
I	Bp Ap Mp Bp	13.9
J	Fp Cp	11.3
K	Cs Bs As Cs	15
L	Mp Cp	10
M	Cs	6.6
N	Bp Cp Ap Bp Cp	16.3
O	Gp Cp	11.1
P	Gp Ap Bp	13.8
Q	Fs Bs	10.5
R	Fp Cp	11.3
S	Cs Ap Bp	12.2
T	Ms	3.9
U	Hp Fp Gs Bp	15.2
V	Bp Cp	7.9
W	Kp Jp Bp	16.3
X	Jp Dp	25.4

Addendum 3 - Racing Area

Figure 1



Addendum 3 - Racing Area (continued)

Figure 2

