



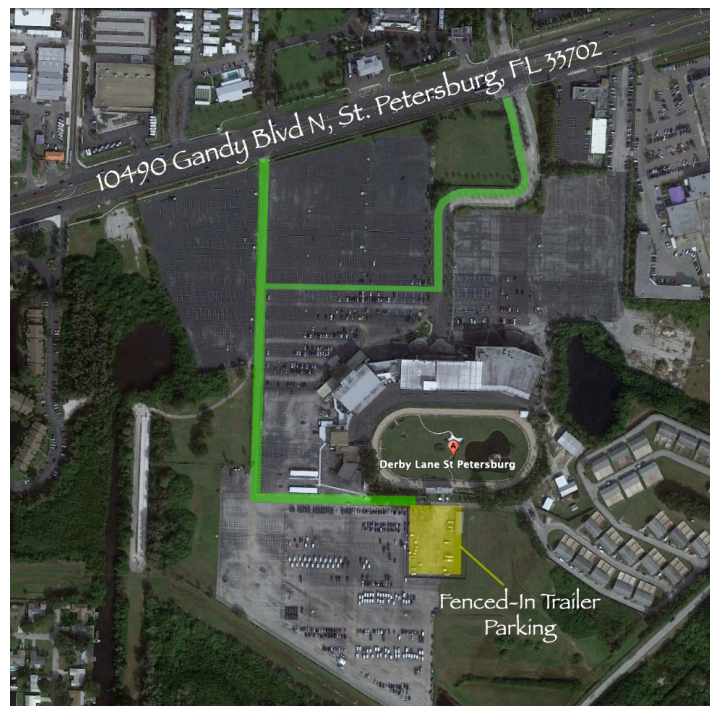
## 2022 St. Petersburg Helly Hansen NOOD Regatta Logistics

**Launching/Hauling** - The majority of launching will take place on Thursday, February 17<sup>th</sup> and nearly all the boats haul out after racing on Sunday, February 20<sup>th</sup>. Anyone who is able to launch earlier in the week, or haul on Monday is strongly encouraged to do so to avoid long lines.

The Sailing Center has 2-ton and 3-ton cranes. Traffic between Bayshore Drive and the Sailing Center will be strictly controlled. Dockage will be split between the main SPYC Marina and the Sailing Center. Dock space is limited, so all boats must be prepared to raft. ***Please note: There is no vehicle parking at the Sailing Center for the duration of the event.*** Trailer parking info is listed below.

**Trailer Parking** – In an effort to keep regatta costs down for our visiting sailors, we have arranged for complementary trailer storage surrounding the event dates. The trailer lot is located at Derby Lane (10490 Gandy Blvd N, St. Petersburg, FL 33702). **ALL TRAILERS PARKED AT DERBY LANE MUST BE REGISTERED & TAGGED PRIOR TO BEING PLACED IN THE DERBY LANE LOT. See the link below for trailer registration.**

<https://forms.gle/eNST3J4aahf5kL4BA> ← Register trailers with this link



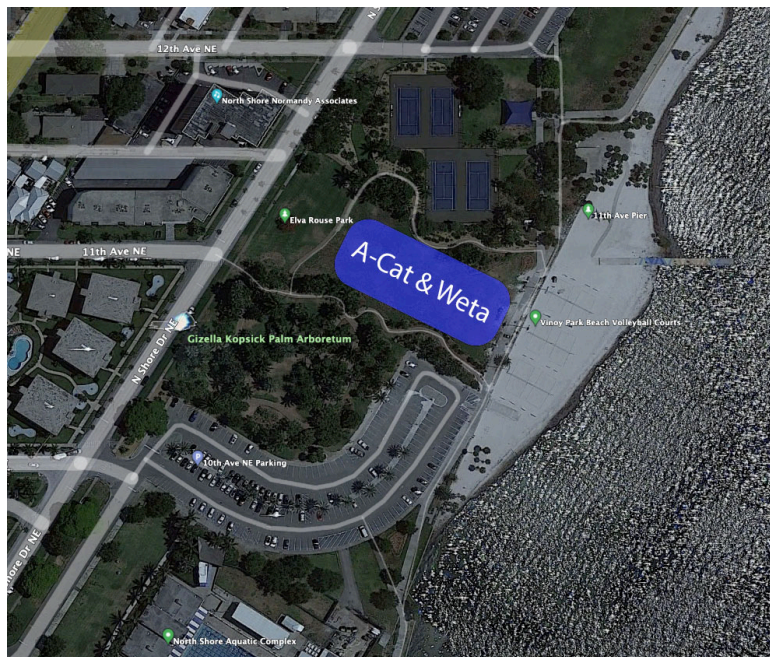
This lot is available to NOOD trailers from Monday, February 7<sup>th</sup> – Monday, February 21<sup>st</sup>.  
**ALL TRAILERS MUST BE REMOVED BY February 21<sup>st</sup>.**



**Additional Paid Trailer Storage Options-** Additional storage options are available for sailors wishing to keep trailers closer to the venue or outside the available times for an added fee. These paid storage options must be prearranged in advance by sailors with the location of their choice. See below for local options:

- U-Haul: 975 2<sup>nd</sup> Ave. S., St. Petersburg, FL 33705  
727.821.006
- Sailor's Wharf: 1421 Bay St. SE., St. Petersburg, FL 33701  
727.350.9304

**A-Cat & Weta Fleets** – The A-Cat & Weta fleets will be stored and launched at Elva Rouse Park (901 North Shore Drive NE, St. Petersburg, FL 33701) for the duration of the regatta. These fleets may arrive to Elva Rouse Park on Wednesday, February 16<sup>th</sup>, and must vacate the park on Sunday, February 20<sup>th</sup>. Please note, vehicles are not allowed on park grass and overnight RV parking and/or camping is not permitted.



**Lightning, Thistle, & Melges 15 Fleets** – The Lightning, Thistle, & Melges 15 Fleets will launch at the Sailing Center prior to the start of the day's racing and will haul at the conclusion of racing each day. These fleets may arrive to the Sailing Center on Thursday, February 17<sup>th</sup>, and must vacate the Center on Sunday, February 20<sup>th</sup>.