



SAILING INSTRUCTIONS

Gasparilla Regatta

February 05, 2022

Organized by

Tampa Sailing Squadron, Apollo Beach, Florida

CRUISER AND MOTHER LOAD

1 RULES

The series will be governed by the rules as defined in *The Racing Rules of Sailing, 2021-2024*.

2 NOTICES TO COMPETITORS

Notices to competitors will be posted on the Official Regatta Notice board located in the kiosk by the TSS flagpole.

3 CHANGES TO SAILING INSTRUCTIONS

3.1 Any change to the sailing instructions will be posted before 0800 on February 05 or issued verbally on the water prior to the warning signal of the affected class(s).

3.2 In case of the possibility of severe weather, all inquiries should be made to TSS at 813-645-8377.

4 SIGNALS MADE ASHORE

4.1 Signals made ashore will be displayed from the flagpole at TSS.

4.2 When flag AP is displayed ashore, '1 minute' is replaced by 'not less than 45 minutes' in race signal AP. This changes Race Signal AP.

5 RACING AREAS

Racing areas will be on Hillsborough Bay near Apollo Beach.

6 CHECK-IN

6.1 All boats should pass the stern of the race committee signal boat, on starboard tack, at least 15 minutes before their scheduled start time, and hail their boat name, sail number, and class. Boats checking in shall keep clear of boats starting before them.

6.2 The Lima flag (come within hail) will not be displayed to remind boats to check in. If it is displayed, it will be for some other message.

7 RECALLS

7.1 When an individual recall is signaled, the race committee will attempt to hail boats that are OCS. The timing and order, or omission, of such hails or the failure of a boat to hear a hail will not be considered an improper action or omission of the race committee under rule 62.1.

8 PENALTY SYSTEM

8.1 In all classes the Scoring Penalty of rule 44.3 will replace all Turns Penalties. To accept a Scoring Penalty, a boat must promptly display a yellow flag, and call the race committee's attention to it upon finishing.

9 PROTESTS AND REQUESTS FOR REDRESS

9.1 In addition to the requirements of rule 61.1, a boat intending to protest shall inform the race committee upon finishing or retiring of its intention to protest.

9.2 Protest forms are available at TSS.

9.3 Protests and requests for redress shall be hand-delivered no later than One Hour after Protestor's class RC Signals Boat docks, to the RC or Registration Desk at TSS.

9.2 Parties and witnesses will be notified of the date, time, and place of the hearing.

10 SAFETY REGULATIONS

10.1 Any boat that challenges a vessel confined to the Tampa Bay shipping channels in such a way as to cause them to file a report, or who violates a moving or static safety or security zone resulting in the filing of a report, will be disqualified. This changes rule 63.1.

10.2 A competitor who intentionally puts trash in the water may be protested by other boats or the race committee.

11 RADIO COMMUNICATIONS

- 11.1 The race committee will monitor VHF channel 68.
- 11.2 A boat leaving the racing area before finishing shall notify its class Signals Vessel over VHF, (hailed as "Race Committee Long Course" or "Race Committee Short Course", as appropriate) providing her name, sail number, and class, and receive acknowledgment from the race committee.
- 11.3 [DP] Except in an emergency, a boat shall neither make radio transmissions while racing nor receive radio communications not available to all boats. This restriction also applies to mobile telephones.

12 PRIZES

Prizes will be presented on Saturday evening. Final results will be posted after any protest hearings. The final results may affect the awarded prizes.

13 SCHEDULE OF RACES

- 13.1 The base Starting time will be 11:30 AM. Warning Signal at 11:25 AM. This is a pursuit start with all boats from Cruiser and Mother Load classes issued individual Start times to follow after the base Starting time.
- 13.2 Only boats with valid and current PHRF certificates with a Cruiser endorsement may enter the Cruiser class. Cruisers may declare spinnaker or non-spinnaker and will be scored accordingly.
- 13.3 Only boats without valid and current PHRF certificates may enter the Mother Load class and they will be assigned handicap ratings by the Organizing Authority.
- 13.4 Boats racing in improper classes, per 13.2 and 13.3, will be disqualified without a hearing.
- 13.5 One race is scheduled.

14 CLASS FLAGS

Numeral Pennant 2 will be the class flag for both Cruisers and Mother Load, which will start as one class but be scored according to their actual class.

15 COURSES AND MARKS

- 15.1 The diagrams in the attachment show the courses, including the approximate angles between legs, the order in which marks are to be passed, and side on which each mark is to be left.
- 15.2 The course to be sailed will be announced at the competitors meeting, posted on the notice board and displayed at the stern of the Signals Vessel.
- 15.3 The first leg of the course will be to windward and boats shall leave it to port if the Signals Vessel

displays a red flag, and shall leave it to starboard if a green flag is displayed. Boats must pass within 3 of their boat lengths of the windward first mark.

- 15.4 The starting pin will be an inflatable mark.

16 THE START

- 16.1 The individual GPS starting times for all boats will be distributed at the competitors meeting and posted on the notice board.
- 16.2 The Starting line will be 0.25 nm directly downwind of the first mark, the TSS "X" mark.
- 16.3 The first leg of the course will be to windward and will be a gate approximately the same length and orientation as the Starting line. Boats shall pass through the gate and then on to Mark 2.
- 16.4 The starting line will be between a staff displaying an orange flag on that class's Signals Vessel at the starboard end and the course side of the port end starting mark (pin).

17 THE FINISH

The finishing line will be between a staff displaying a blue flag on that class's Signals Vessel and the course side of the finishing mark.

18 TIME LIMIT

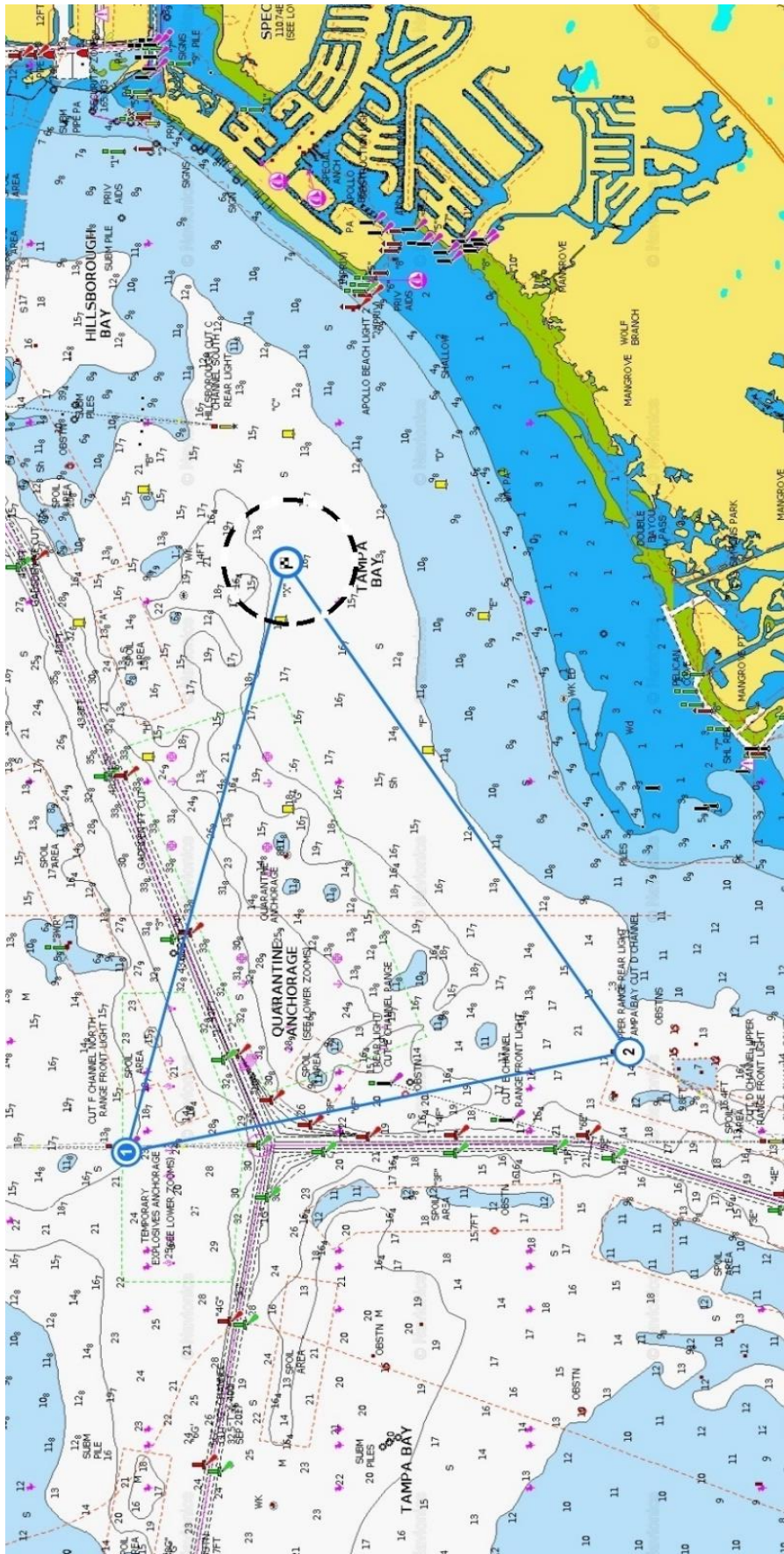
- 18.1 The time limit for all boats to sail the course and finish is 1700.
- 18.3 Boats still racing after 1700 will be scored DNF. This changes rules 35 and A5.

19 SCORING

- 19.1 PHRF time-on-distance will be used to calculate individual starting times.
- 19.2 Unless the course is shortened, each boat's score will be the order she finishes.
- 19.3 If the course is shortened, corrected finish times and order will be calculated using the shorter course length.



Numeral Pennant 2



Total Course: 8.65 nm.

[Start] RC boat and Starting Pin located on dashed circle 0.25 nm downwind of Checkered Flag.

[Checked Flag] TSS "x" Mark (27.782223, -82.470332) First Mark after Start. Due windward of Starting Line.

Leave Mark to Port if RC displays red shape, or Sbd if green.

[1] Range Tower - Cut "F", northbound, front tower (27.795491, -82.523182). Leave to Port.

[2] Range Tower - Cut "D", northbound, rear tower (27.753358, -82.513617). Leave to Port.

[Checked Flag] TSS "x" Mark (27.782223, -82.470332). Finish line.

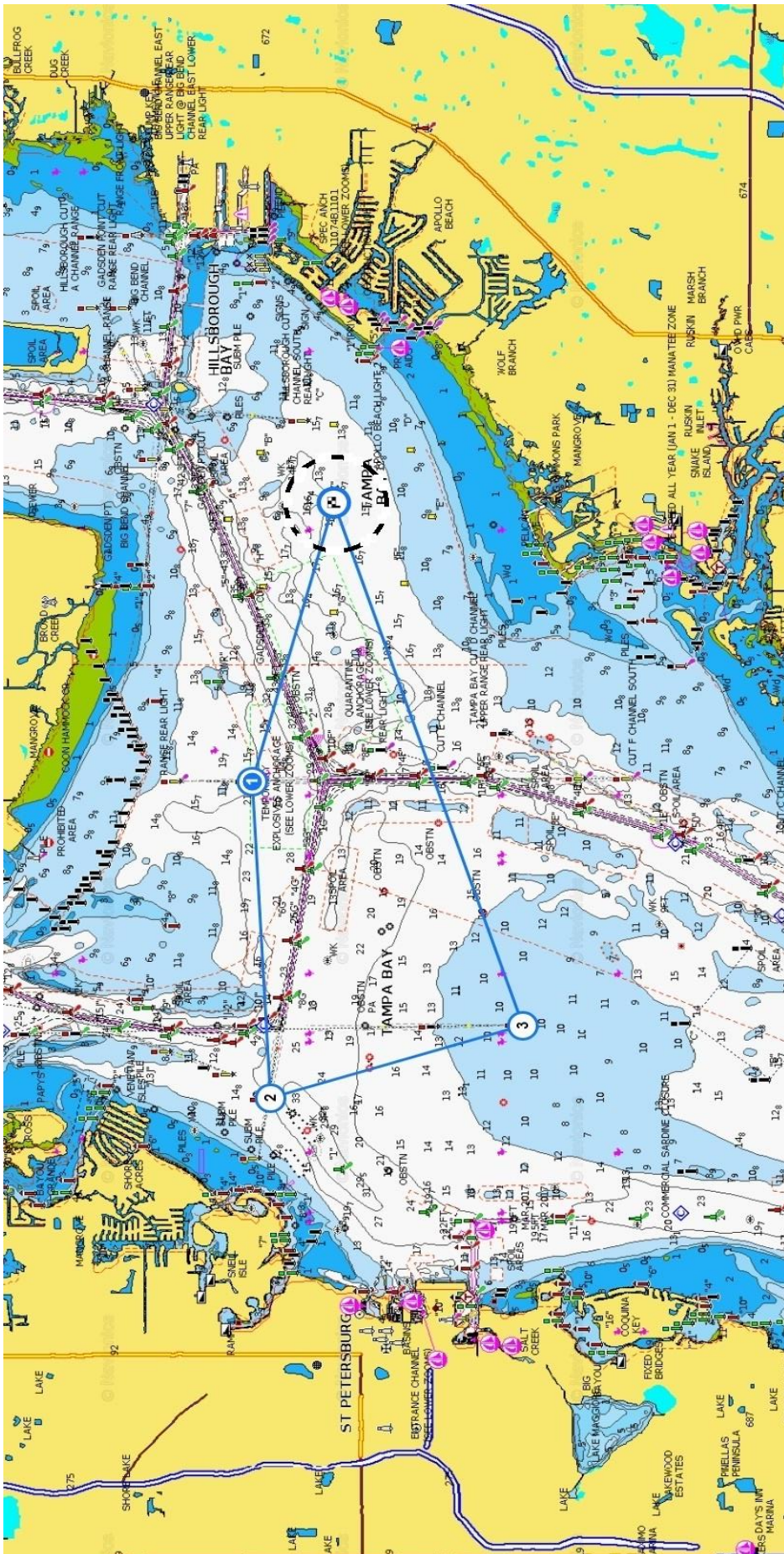
Leg: 0.25 nm.

Leg: 2.9 nm.

Leg: 2.6 nm.

Leg: 2.9 nm.

Course B



Course C

Total Course: 14.95 nm.

[Start] RC boat and Starting Pin located on dashed circle 0.25 nm downwind of Checkered Flag.

[Checked Flag] TSS "x" Mark [27.782223, -82.470332], (27° 46' 56", -82° 28' 13"). First Mark after Start.

Due windward of Starting Line. Gate mark. Sail through.

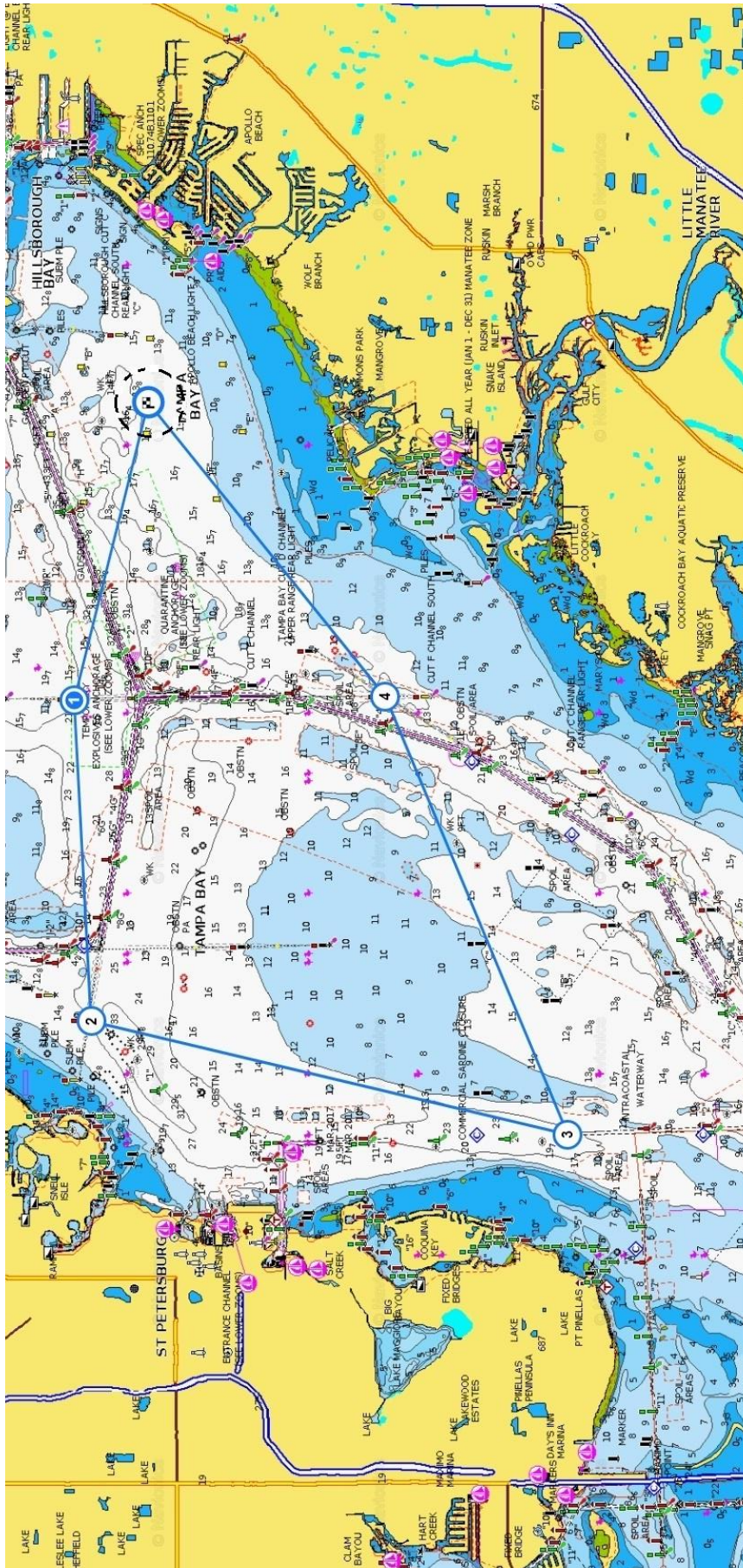
[1] Range Tower – Cut "F", NB, front tower [27.795491, -82.523182], (27° 47' 44", -82° 31' 23"). Leave to Port.

[2] Range Tower – Cut "G", WB, front tower [27.793006, -82.587142], (27° 47' 35", -82° 35' 14"). Leave to Port.

[3] Range Tower – Cut "J", SB, rear tower [27.750832, -82.572132], (27° 45' 03", -82° 34' 20"). Leave to Port.

[Checked Flag] TSS "x" Mark [27.782223, -82.470332], (27° 46' 56", -82° 28' 13"). Finish Line.

- Leg: 0.25 nm.
- Leg: 2.9nm.
- Leg: 3.4 nm.
- Leg: 2.7 nm.
- Leg: 5.7 nm.



Course D

Total Course: 20.75 nm.

- Leg: 0.25 nm.
- Leg: 2.9 nm.
- Leg: 3.4 nm.
- Leg: 5.2 nm.
- Leg: 5.0 nm.
- Leg: 4.0 nm.

[Start] RC boat and Starting Pin located on dashed circle 0.25 nm downwind of Checkered Flag.
 [Checked Flag] TSS "x" Mark [27.782223, -82.470332], (27° 46' 56", -82° 28' 13"). First Mark after Start.
 Due windward of Starting Line. Gate mark. Sail through.

- [1] Range Tower – Cut "F", NB, front tower [27.795491, -82.523182], (27° 47' 44", -82° 31' 23"). Leave to Port.
- [2] Range Tower – Cut "G", WB, front tower [27.793006, -82.587142], (27° 47' 35", 82° 35' 14"). Leave to Port.
- [3] Chnl Mkr – Pt. Pinellas, #6, red, fishing, 4 secs, [27.708368, -82.609451], (27° 42' 30", -82° 36' 34"). Leave to Port.
- [4] Range Tower – Cut "F", SB, front tower [27.740905, -82.522683], (27° 44' 27", -82° 31' 22"). Leave to Port.
- [Checked Flag] TSS "x" Mark [27.782223, -82.470332], (27° 46' 56", -82° 28' 13"). Finish line.