



Sailing Instructions

American Yacht Club

32nd Annual Fall Regatta

Leukemia Cup Regatta

and J/105 New England Championship

September 24, 25 & October 1, 2, 2022

Organizing Authority: American Yacht Club, Rye, NY

1 RULES

The regatta will be governed by the rules as defined in The Racing Rules of Sailing.

2 NOTICES TO COMPETITORS and VHF CHANNELS USED

- 2.1 Notices to competitors will be posted on the official notice board located at the Regatta Website:
<https://yachtscoring.com/emenu.cfm?eid=15021>.
- 2.2 VHF Channels used by the race committee to communicate with the competitors shall be as follows:
South Course (Coastal Racing) VHF Channel: 69
East Course (Short Course Racing) VHF Channel: 71
- 2.3 The race committee intends to make courtesy broadcasts on the VHF channels at 0930 on race days.
- 2.4 The race committee may announce their intentions to start a race or the course signals via the VHF Course Channel.
- 2.5 Failure of the race committee to make any VHF broadcasts, the timing thereof or a competitor to hear any broadcast shall not be grounds for redress. This changes RRS 62.1(a).

3 CHANGES TO SAILING INSTRUCTIONS

Any change to the sailing instructions will be posted before 2000 on the day before it will take effect.

4 SIGNALS MADE ASHORE

- 4.1 Signals made ashore will be displayed on the American Yacht Club main flagpole and shall be announced on the South and East Course VHF Channels.
- 4.2 When flag AP is displayed ashore, '1 minute' is replaced with 'not less than 90 minutes' in the race signal AP.

5 SCHEDULE OF RACES

- 5.1 The first warning signal on each day will be based on the weather forecast and will be at **1055** or **1255**. The Race Committee will announce by text message and post on the Regatta Website the time of the first warning signal by **1900 on the day before each day of racing**. Failure of the race committee to make any text messages, the timing thereof or a competitor to receive any text shall not be grounds for redress. This changes RRS 62.1(a).
- 5.2 The race committee may run more than one race per day for all classes except the Coastal Racing classes.
- 5.3 **Flag A displayed**, with no sound, while boats are finishing means '**No more racing today**.'
- 5.4 No warning signal will be made after 1600 on Sunday, October 2.

6 CLASS FLAGS

- 6.1 Class flags will be numeral pennants.
- 6.2 **Each boat shall display its class flag** on its permanent backstay or, in the absence of a permanent backstay, from its stern rail.
- 6.3 A listing of entrants by class and course assignment (East or South) shall be posted on the regatta website by 1200 on the day before the first race of the series.

7 RACING AREAS

- 7.1 There will be two separate race areas to which classes will be assigned, the East Course and the South Course.
- 7.2 The **East Course** is located approximately mid-Sound, east of Milton Point.

- 7.3 The **South Course** is located approximately mid-Sound south of Milton Point.
- 7.4 The approximate position of the starting areas will be announced each day for all classes on their respective VHF channels, approximately 40 minutes before the scheduled first warning signal.

8 THE COURSES FOR COASTAL RACING

The Courses and associated signals for the **Coastal Racing** classes shall be as defined in **Appendix B**.

9 THE COURSES FOR ALL CLASSES EXCEPT COASTAL RACING

- 9.1 The diagrams in SI Appendix A show the WL courses, the order in which marks are to be passed, and the side on which each mark is to be left.
- 9.2 For WL courses the leeward mark will be a gate. **In the event one of the gate marks is missing the remaining gate mark shall be rounded to port.**
- 9.3 The race committee signal boat will display the magnetic bearing and range, in tenths of nautical miles (15 is 1.5 nautical miles), from the signal boat to the windward mark. The signal boat will also display the number of legs.
- 9.4 Sample course board and configurations for WL courses (labels may not be displayed):

Bearing	Range	Class	Course
2	1	1	4
3	5	2	4
0		3	4
		4	3

10 MARKS

Marks for the Coastal Racing classes are defined in SI Appendix B. For all other classes the marks will be inflatable buoys as follows:

	Original Marks	Starting Mark	Finish Mark	Change Mark(s)	Offset Mark (1A)
East Course	Yellow	Orange	Orange	Orange	Red
South Course	Government Marks	Yellow	Government Mark	N/A	N/A

11 THE START

- 11.1 The starting line will be between a staff displaying an orange flag on the race committee vessel at the starboard end and the course side of the port-end starting mark. For the Coastal Racing classes only, the race committee may signal for a downwind start with a radio announcement on the South Course (Coastal Racing) VHF Channel. In this case the starting line for the Coastal Racing classes will be between a staff displaying an orange flag on the race committee vessel at the port end and the course side of the starboard-end starting mark.
- 11.2 Boats whose warning signal has not been made shall avoid the starting area during the starting sequence for other races.
- 11.3 A boat that does not start within 10 minutes after her starting signal will be scored Did Not Start without a hearing. This changes RRS A5.1 and A5.2.
- 11.4 The race committee will attempt to identify OCS boats and to broadcast their sail numbers on the racecourse VHF Channel.
- 11.5 If the race committee **displays flag C with class flag(s)** and multiple sound signals during the starting sequence, Mark 1 (the Windward Mark) will be, for the class(es) starting, a Change Mark as defined in SI 10 with Bearing and Range will be displayed on a course board, and **Mark 1A (the Offset) will not be set and will not be a mark of the course.**

12 CHANGE OF THE NEXT LEG OF THE COURSE

To change the next leg of the course, the race committee will lay a new mark (or move the finishing line) and remove the original mark as soon as practicable. When in a subsequent change a new mark is replaced, it will be replaced by an original mark. **When the mark being changed is Mark 1 (Windward Mark), Mark 1A will NOT BE set and will no longer be a mark of the course.**

13 FINISH

- 13.1 For all classes **except** Coastal Racing classes, the finish line will be between a staff displaying a blue flag on race committee vessel and the course side of the finish mark.
- 13.2 For the Coastal Racing classes, the finish line will be between a staff displaying a blue flag on a race committee vessel and the course side of the finish mark.

14 TIME LIMITS

- 14.1 For all classes **except** the Coastal classes: the time limit for the first boat to sail the course and finish in each class will be **2 1/2 hours** from the starting time of that class. Boats failing to finish within **30 minutes after** the first boat in its class sails the course and finishes will be scored Did Not Finish without a hearing. This changes RRS 35, A5.1, A5.2 and A10.
- 14.2 For the Coastal Racing classes: the time limit for the first boat in its class to sail the course and finish in each class following a 1055 first warning signal will be **4 hours** from the starting time of that class and following a 1255 first warning signal the time limit will be **3 hours**. Boats failing to finish **within 1 1/2 hours** after the first boat sails the course and finishes will be scored Did Not Finish without a hearing. This changes RRS 35, A5.1, A5.2 and A10.

15 PROTESTS AND HEARING REQUESTS

- 15.1 Rule 61.1(a) is changed to include the following notice and procedures: At any time after an incident, up to and including immediately after finishing, a protesting boat shall notify the race committee over the Race Course VHF channel of its intent to lodge a protest and provide the sail number of the protesting boat and the sail number of the boat it intends to protest. The race committee will identify all protests for that race received by the committee by broadcast over the racecourse VHF channel. Broadcasts will commence approximately 5 minutes after the first boat has finished and will be repeated at approximate 15-minute intervals until the last boat has finished. These broadcasts are made only as a courtesy to competitors.
- 15.2 Hearing request forms are available on the US Sailing Racing Rules of Sailing app and at the Jury Desk, located in the lobby of American Yacht Club. Protests and requests for redress or reopening shall be sent by e-mail to protests@americanyc.org or delivered to the Jury Desk within the appropriate time limit.
- 15.3 For each class, the protest time limit is 60 minutes after the race committee signal vessel for that class docks.
- 15.4 Notices will be posted no later than 15 minutes after the protest time limit to inform competitors of hearings in which they are parties or named as witnesses. Hearings will begin promptly and be held in the protest room, located off the lobby of American Yacht Club beginning at the time posted.
- 15.5 Notices of protests by the race committee, technical committee or protest committee will be posted to inform boats under RRS 61.1(b).
- 15.6 The arbitrator will not be a member of the Jury that hears the protest but may be permitted to observe the testimony given to the Jury and offer testimony. This changes Rule 63.3(a).

16 SCORING

- 16.1 One Race is required to constitute a series.
- 16.2 When fewer than 5 races have been completed, a boat's series score will be the total of her race scores. When 5 or more races have been completed, a boat's series score will be the total of her race scores excluding her worst score.
- 16.3 A boat scored DNF will receive points equal to the number of boats in her class that sailed the course and finished within the time limit plus two points. This changes RRS A4 and A5.
- 16.4 The PHRF Coastal Racing classes will be scored time on distance and will use the "Dist" rating specified on their PHRF Certificate issued by the YRALIS.

16.5 Scoring for ORC Fleet will use Windward/Leeward ToT Triple Number ratings and scoring in the ORC Doublehanded classes will use All Purpose ToT Triple Number ratings shown on their certificates.

16.6 Course distances as determined by the race committee will not be grounds for redress, this changes Rule 62.1.

17 PRIZES

Prizes will be awarded at American Yacht Club after the final race and protest hearings.

18 CONTACT INFORMATION

American Yacht Club, 499 Stuyvesant Avenue, Rye, NY 10580

Website: www.americanyc.org Phone: (914) 967-4800

Email: aycrc@americanyc.org Fax: (914) 967-5340

American Yacht Club cordially extends the privileges of the Clubhouse and harbor to participants before and after the racing.

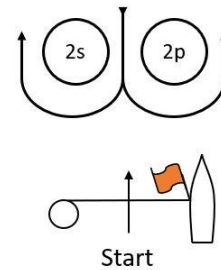
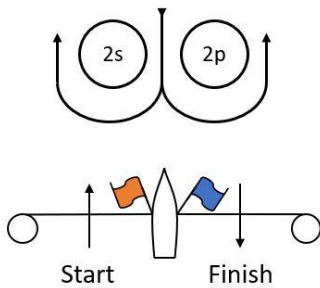
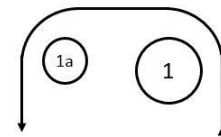
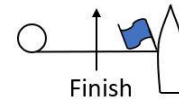
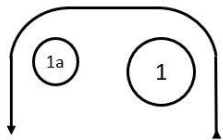
A limited number of moorings will be available. Reservations are required. Contact Bud Puterbaugh, AYC Harbor Captain by email (bputerbaugh@americanyc.org) for rates and availability.

Appendix A Windward Leeward Course Diagrams

***For Races started in accordance with SI 11.5 or when mark 1 has been changed in accordance with RRS 33, mark 1a will no longer be a mark of the course.**

Signal	Order of Marks
2	Start, 1,1a*, Finish
4	Start, 1,1a*, 2p/2s, 1,1a*, Finish
6	Start, 1,1a*,2p/2s, 1,1a*, 2p/2s, 1,1a* Finish

Signal	Order of Marks
3	Start, 1,1a*, 2p/2s, Finish
5	Start, 1,1a*, 2p/2s, 1,1a, 2p/2s, Finish
7	Start, 1,1a*, 2p/2s, 1,1a*, 2p/2s, 1,1a*, 2p/2s, Finish



**Appendix B
Coastal Racing Course Description**

- B.1. The race committee signal vessel will signal the course by letters according to SI B5 and B2. Marks shall be rounded in the order signalled (reading the course board column by column, top-down, then fore-aft) and left on the hand so that the rhumb line to the next mark will not cross the rhumb line from the previous mark. If the next mark is reciprocal, the mark shall be left to port when rounding.
- B.2. A sample course board using government marks is shown below (labels may not be displayed) In this example the sequence of marks for all Divisions would be: Start, F, X, A, G, A (please note that A is Finish). Since the leg from G to A is reciprocal of the previous leg, G would be left on the port hand.

Mark	Mark	Bearing	Range
F	A	1	2
X		2	0
A		0	
G			

B.3. Marks for the distance race will be designated as follows:

- | | | | |
|------------------------------|----------------------------|------------------------------|---------------------------|
| A N "40A" Scotch Caps | F G"23" Sands Point | K G"17" Oyster Bay | P R"32A" Mid-sound |
| B R"42" Mamaroneck | G R"4" Prospect Pt | L G"15" Lloyd Point | Q G"1" Greenwich |
| C C"1" Delancey Pt | H R"6" Mott Point | M GR "E" Eaton's Neck | R R"38" Playland |
| D R"2" Larchmont | I G"21" Matinecock | N R"28C" Norwalk | |
| E C"1" Execution Rock | J G"19" Oak Neck Pt | O R"32" Stamford | X Drop Mark |

B.4. Mark X, if signaled, will be an ORANGE TETRAHEDRON inflatable mark, and located at a range and bearing from the race committee signal boat as displayed on the course board. Mark X may be used anywhere in the course.

B.5. The following chart shows the approximate location of the marks. It is not intended to be used for navigation and is not to scale.

