



INTERNATIONAL ETCHELLS SOUTHERN AREA CHAMPIONSHIPS 4 – 5 JUNE 2022

**ORGANISING AUTHORITY
ROYAL LONDON YACHT CLUB
COWES, UK**

SAILING INSTRUCTIONS

(Amended 27/05/2022)

The notation '[DP]' in a rule in the Sailing Instructions means that the penalty for a breach of that rule may, at the discretion of the protest committee, be less than disqualification.

1. RULES

- 1.1 The Event are governed by the rules as defined in the Racing Rules of Sailing (RRS).
- 1.2 International Etchells Association Class Rule.

2. CHANGES TO SAILING INSTRUCTIONS

- 2.1 Any change to the Sailing Instructions (SIs) made ashore will be posted by 0900 on the day it will take effect, except that any change to the schedule of races will be posted by 2000 on the day before it will take effect.

3. COMMUNICATIONS WITH COMPETITORS

- 3.1 Notices to competitors will be posted on the Official Notice Board (ONB).
- 3.2 The ONB will be online at www.yachtscore.com.
- 3.3 The Race Office is in Cowes Yacht Haven (CYH).
- 3.4 The Race Committee (RC) intends to broadcast race information and course information by VHF Ch 05.
- 3.5 Competitors wishing to communicate with the Race Committee should do so on VHF Ch 77.
- 3.6 [DP] The use of mobile/cell phones, or any device capable of sending and/or receiving external electronic communication and/or connecting to the internet is prohibited after the first Warning Signal on each race day until the boat has completed racing that day, except in an emergency threatening the safety of any member of the crew or the flotation of the boat.

4. CODE OF CONDUCT

- 4.1 Competitors and support persons shall comply with reasonable requests from race officials.

5. SIGNALS MADE ASHORE AND AFLOAT

- 5.1 Signals made ashore will be displayed at the RLYC Flagstaff and advised on the event WhatsApp group.
- 5.2 When flag AP is displayed ashore, "1 minute" is replaced by "not less than 45 minutes". This changes Race Signals AP.

6. SCHEDULE

- 6.1 The intention of the Race Committee is to run six races over the two days of the regatta.
- 6.2 The Race Committee intends to run no more than three races each day.
- 6.3 On the last day of racing, no warning signal will be made after 1500.
- 6.4 The times shown in the table below are UTC plus 1 hour (British Summer Time).
- 6.5 Indicative tide times are for High Water Portsmouth.
- 6.6 Schedule.

DAY HWP (BST)	TIME	FIRST WARNING SIGNAL	NOTES
Sat 04 June HW 1540 4.2m	0900	1155	Briefing by WhatsApp Race 1 Race 2 & 3 asap after each finish.
Sun 05 June HW 1620 4.1m	1700	1055	Race 4 Race 5 & 6 asap after each finish Prizegiving in CYH

7. CLASS FLAGS

The class flag is shown below.

Class Flag ICOS "E"	International Etchells Class Flag 
------------------------	--

8. RACING AREA

- 8.1 Racing will take place from a Committee Vessel in the Central and Eastern Solent, including the Bramble Bank.
- 8.2 The approximate location of the committee vessel will be announced on VHF Channel 05 and the Event WhatsApp Group.

9. COURSES

- 9.1 The format of courses will be windward/leeward. See Addendum A.
- 9.2 The Race Committee intends to display the course signal with the compass bearing and distance to Mark 1 on the committee vessel no later than the warning signal.
- 9.3 With reference to gate marks 4p/4s, if only one gate mark is in position, that mark shall be rounded to port.
- 9.4 A chartlet showing the Solent Two Character Codes can be found in Addendum B of these Sailing Instructions to assist boats in locating the race area and Committee Vessel.

10. MARKS

- 10.1 With reference to Addendum A, marks 1, 1a, 4s & 4p will be orange inflatable marks.
- 10.2 The starting marks will be a committee vessel and a black inflatable mark.
- 10.3 The finishing marks will be a committee vessel and a black inflatable mark.
- 10.4 When a new mark has been laid to change the next leg of a course it will be a black inflatable mark.

11. OBSTRUCTIONS

- 11.1 All yachts shall comply with Associated British Ports Notice to Mariners No 08 of 2022 giving details of a Precautionary Area and Moving Prohibited Zone (MPZ). The MPZ shall rank as an obstruction for the purposes of RRS 19 and 20.
- 11.2 Whilst racing, boats shall pass to the north of the Cowes Breakwater.

12. THE START

- 12.1 Races will be started by using RRS 26.
- 12.2 The starting line will be between a staff displaying an orange flag on the Committee Vessel at the starboard end and the course side of the port-end starting mark.
- 12.3 The Race Committee may broadcast the bow numbers of individually recalled boats on VHF CH 05, as soon as practicable after Flag X has been displayed. Delay or failure to do so is not grounds for redress.
- 12.4 Bow numbers will also be used for Uniform and Black Flag notifications. This changes RRS 30.3 and 30.4.

13. CHANGE OF THE NEXT LEG OF THE COURSE

- 13.1 The position of any mark(s) may be adjusted by up to plus or minus 10 degrees relative to previous location and up to approximately 200 metres to windward or leeward without signalling Flag C, a direction signal, a length signal or a sound signal. This changes RRS 33.
- 13.2 When a change the next leg of the course has been signalled, the Race Committee will lay a new mark (or move the finishing line) and remove the original mark as soon as practicable. When in a subsequent change a new mark is replaced, it will be replaced by an original mark.
- 13.3 The RC will provide details of any changes using VHF 05.

14. THE FINISH

- 14.1 The finish line will be between a staff displaying a blue flag on the Committee Signal Vessel and the course side of the port-end finishing mark.

15. PENALTY SYSTEM

- 15.1 The first two sentences of RRS 44.1 are changed to: "A boat may take a One-Turn Penalty when she may have broken one or more rules of Part 2 or RRS 31 in an incident while racing. However, when she may have broken one or more rules of Part 2 while in the zone around a mark other than a starting mark, her penalty shall be a Two-Turns Penalty".
- 15.2 In RRS 44.2 insert after the first sentence: "However, if Mark 1a (spreader mark) is set, a boat may take a penalty for an incident in the zone around Mark 1 or on the leg between Mark 1 and Mark 1a, as soon as possible after leaving the zone around Mark 1a".

16. TIME LIMITS

- 16.1 The following time limits will apply.
 - (a) The time limit for the first boat to sail the course and finish is 90 minutes.
 - (b) Finishing Window. The time limit for boats to finish after the first boat sails the course and finishes is 20 minutes. Boats that are still racing but do not finish within the Finish Window, will be scored Time Limit Expired (TLE). The TLE score will be equal to the number of boats to finish plus 2 points. This changes RRS 35, A5.1, A5.2 and A10.

17. HEARING REQUESTS

- 17.1 The protest limit is 90 minutes after the last boat has finished the last race of the day or the Race Committee signals no more racing today, whichever is later.
- 17.2 Hearing forms will be available at the Race Office in CYH.
- 17.3 Protest and requests for redress or reopening shall be delivered to the Race Office in CYH within the protest time limit. Contact mobile phone numbers should be included on the protest form.
- 17.4 Notices will be posted no later than 30 minutes after the protest time limit to inform competitors of the hearings in which they are parties or named as witnesses. Hearings will be held in the protest room located at the RLYC.

18. SCORING

- 18.1 One (1) race shall be completed to constitute a series for the Etchells Southern Area Championships.
- 18.2 When one (1) to four (4) races have been completed a boats series score shall be the total of all their scores.
- 18.3 When five (5) or more races have been completed, a boat's score will be the total of her race scores excluding her worst score.

19. SAFETY REGULATIONS

- 19.1 [DP] All boats shall sail past the committee vessel on starboard tack and hail their sail or bow number prior to start of the first race each day.
- 19.2 [DP] A boat that retires from a race shall notify the Race Committee as soon as possible on VHF Ch 77 or by hailing an official regatta support boat or rib.

20. REPLACEMENT OF CREW OR EQUIPMENT

- 20.1 Substitution of competitors is not allowed without the prior written permission of the Race Committee.
- 20.2 Substitution of damaged or lost equipment is not allowed unless authorised in writing by the Race Committee. Requests for substitution shall be made to the committee at the first reasonable opportunity, which may be after the race.

21. EQUIPMENT AND MEASUREMENT CHECKS

- 21.1 A boat or equipment may be inspected at any time for compliance with the Class Rules and Sailing Instructions.

22. SUPPLIED BOATS

- 22.1 Does not apply.

23. OFFICIAL VESSELS

- 23.1 The Committee Vessel (Signal Vessel) will be a large motor launch Call Sign Castle Two.
- 23.2 Mark laying vessels will be RLYC Ribs.

24. SUPPORT TEAMS

- 24.1 [[DP] Team leaders, coaches, other support personnel and their coach and support boats shall stay outside areas where boats are racing from the time of the first Warning Signal of the day until racing has been concluded for the day. Between races, coach and support boats shall not approach, communicate with or transfer provisions or equipment to or from their supported boats unless in a medical or emergency requirement threatening the health of the crew or the flotation of the boat and only with the expressed permission of the OA.
- 24.2 All support person vessels shall carry a marine VHF radio and comply with RRS 37 'Search and Rescue Instructions'.

25. TRASH DISPOSAL

- 25.1 Trash may be placed aboard support or official boats.

26. BERTHING

- 26.1 Berthing is the responsibility of each boat.

27. HAUL OUT RESTRICTIONS

- 27.1 Boats shall not be launched, relaunched or hauled out after 1800 on Friday 03 July except with and according to the terms of prior written permission of the race committee.

28. DIVING EQUIPMENT AND PLASTIC POOLS

- 1.1. [[DP] Underwater breathing apparatus and plastic pools or their equivalent shall not be used around boats between the warning signal of the first race and the end of each event.
- 1.2. [DP] No person shall undertake any swimming, underwater or diving activities of any kind within the harbour without a valid permit to dive from the Cowes Harbour Master or the manager of the marina you wish to dive at. This prohibited activity is legislated under Cowes Harbour Commission [General Direction 4.4](#).
- 28.1 Keelboats shall not be cleaned below the waterline by any means between the preparatory signal of the first race of the Event and the end of the Event.

29. PRIZES

- 29.1 Prizes will be awarded as soon as possible after racing on Sunday 05 June 2022 at Cowes Yacht Haven to the following boats:
- (a) The Southern Area Championship Trophy to the highest placed boat in the series.
 - (b) The top three (3) boats in the series.
 - (c) The Corinthian Prize to the highest placed boat sailed with a WS Categorization 1 crew.
- 29.2 A prize will also be awarded to the highest place boat sailed by youth crew. A youth crew is defined as one where all crew members are under 29 years of age on the 01/01/2022.

30. RISK STATEMENT

- 30.1 Rule 3 of the Racing Rules of Sailing states: "The responsibility for a boat's decision to participate in a race or to continue racing is hers alone."
- 30.2 Sailing is by its nature an unpredictable sport and therefore involves an element of risk. By taking part in the event, each competitor agrees and acknowledges that:
 - (a) They are aware of the inherent element of risk involved in the sport and accept responsibility for the exposure of themselves, their crew and their boat to such inherent risk whilst taking part in the event;
 - (b) They are responsible for the safety of themselves, their crew, their boat and their other property whether afloat or ashore;
 - (c) They accept responsibility for any injury, damage or loss to the extent caused by their own actions or omissions;
 - (d) Their boat is in good order, equipped to sail in the event and they are fit to participate;
 - (e) The provision of a race management team, patrol boats, and other officials and volunteers by the event organiser does not relieve them of their own responsibilities;
 - (f) The provision of patrol boat cover is limited to such assistance, particularly in extreme weather conditions, as can be practicably provided in the circumstances;
 - (g) It is their responsibility to familiarise themselves with any risks specific to this venue or this event drawn to their attention in any rules and information produced for the venue or event and to attend any safety briefing held for the event.
 - (h) They are responsible for ensuring that their boat is equipped and seaworthy so as to be able to face extremes of weather; that there is a crew sufficient in number, experience and fitness to withstand such weather; and that the safety equipment is properly maintained, stowed and in date and is familiar to the crew.

31. INSURANCE

- 31.1 Each participating boat is required to hold insurance cover and in particular to hold adequate insurance against third party claims of at least £3 million.

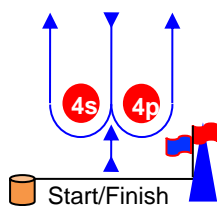
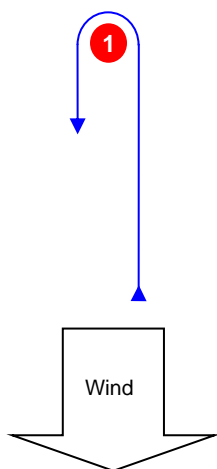
1. SOCIAL ARRANGEMENTS

- (a) Details of any social arrangements will be posted on the ONB in a separate document.

ADDENDUM A - COURSE ILLUSTRATIONS

Course Illustrations – Windward Leeward

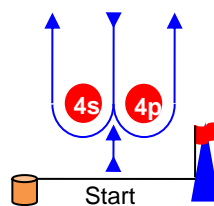
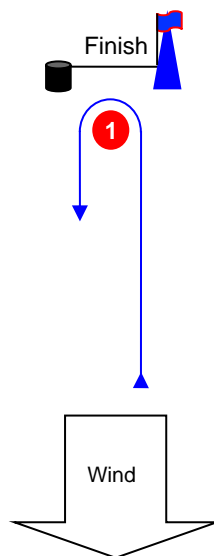
L



Course: Leeward finish

Signal	Mark Rounding Order
L2	Start – 1 – 4s/4p – 1 – Finish
L3	Start – 1 – 4s/4p – 1 – 4s/4p – 1 – Finish
L4	Start – 1 – 4s/4p – 1 – 4s/4p – 1 – 4s/4p – 1 – Finish

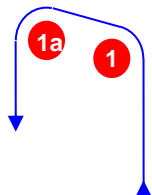
W



Course: Windward Finish

Signal	Mark Rounding Order
W2	Start – 1 – 4s/4p – Finish
W3	Start – 1 – 4s/4p – 1 – 4s/4p – Finish
W4	Start – 1 – 4s/4p – 1 – 4s/4p – 1 – 4s/4p – Finish

LA / WA

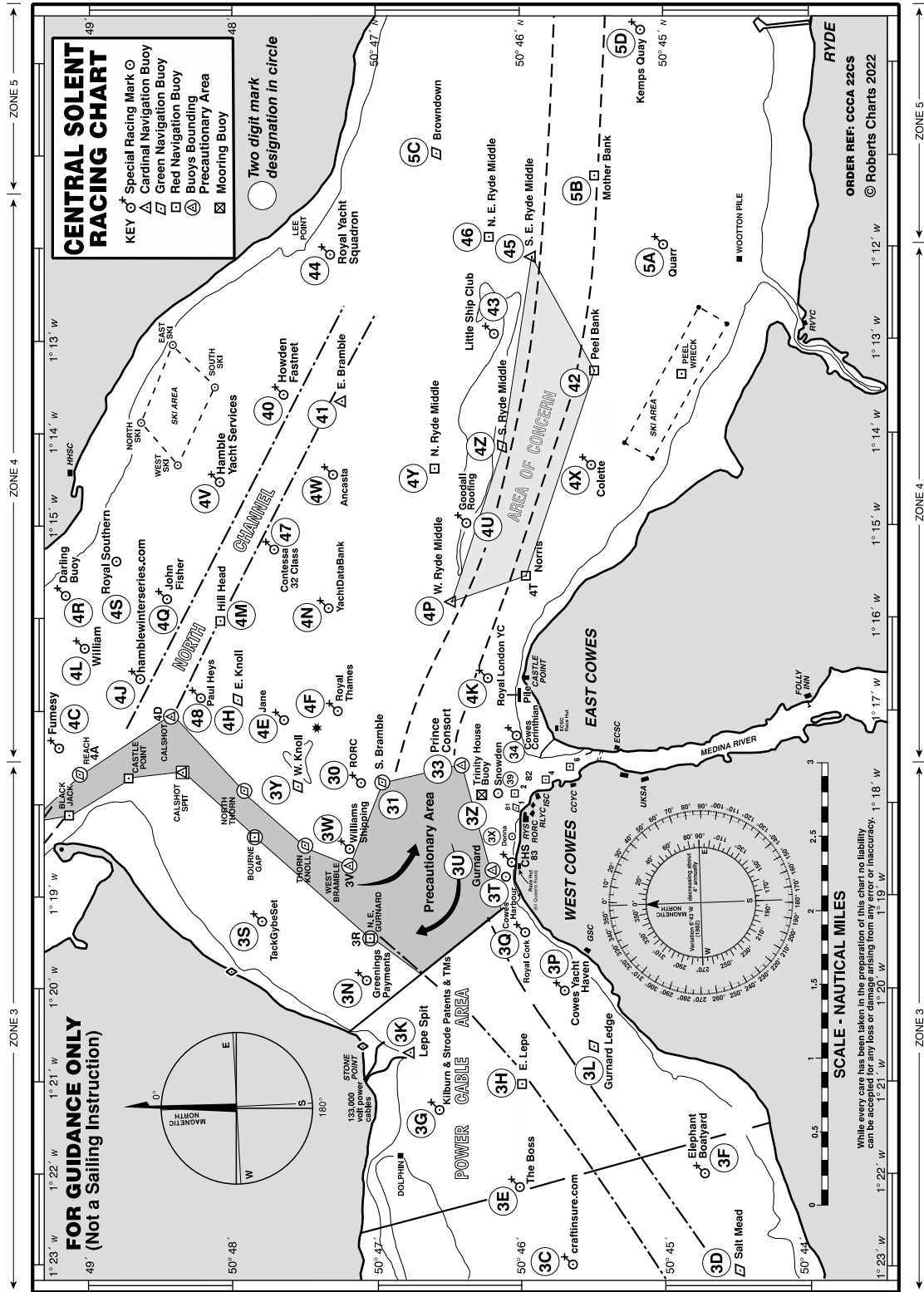


Course: Windward/leeward with offset mark 1a

Signal	Mark Rounding Order
LA2	Start – 1 – 1a – 4s/4p – 1 – 1a – Finish
LA3	Start – 1 – 1a – 4s/4p – 1 – 1a – 4s/4p – 1 – 1a – Finish
LA4	Start – 1 – 1a – 4s/4p – 1 – 1a – 4s/4p – 1 – 1a – 4s/4p – 1 – 1a – Finish
WA2	Start – 1 – 1a – 4s/4p – Finish
WA3	Start – 1 – 1a – 4s/4p – 1 – 1a – 4s/4p – Finish
WA4	Start – 1 – 1a – 4s/4p – 1 – 1a – 4s/4p – 1 – 1a – 4s/4p – Finish

ADDENDUM B

See below a chartlet of the Racing Area showing the Solent Two Character Codes.

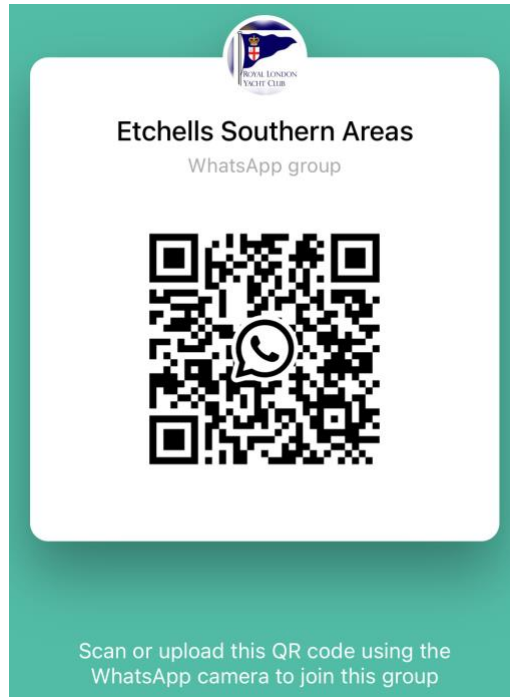


All correspondence should be directed to:

The Royal London Yacht Club, The Parade, Cowes, UK, PO31 7QS. Tel: 01983 300727, Email: sailing@rlyc.org.uk

ADDENDUM C

We have set up an official WhatsApp group for receiving general information from the Race Office and Race Committee. To join the WhatsApp group please use the below QR Code:



Instructions on using QR codes:

- For Apple phones: Please open your camera app and point it at the QR code and then follow the link it displays on your screen.
- For Android phones: Please obtain a barcode scanning app from the Google Play Store such as “Barcode Scanner”, open the barcode scanning app and point it at the QR code and then follow the link it displays on your screen.