

# 2022 Falmouth Yacht Club Race to Hyannis



## Sailing Instructions

### 1-Rules

- 1.1-The Race will be governed by the rules as defined in The Racing Rules of Sailing.
- 1.2-The following US Sailing prescriptions apply:  
US Sailing prescription Section 5.01.2: US SAILING prescribes that all personnel on deck shall wear personal floatation while starting and finishing without exception, and at all other times except when the Captain of the boat directs that it may be set aside.
- 1.3-US Sailing prescription Section 5.09: US SAILING prescribes that the "Quick-Stop" man-overboard procedure shall be practiced aboard the yacht at least once annually. A certificate of such practice shall be signed by participating crew members and kept aboard the yacht.

### 2- Racing Area

- 2.1- The Race will start in the waters of Vineyard Sound, south of the Falmouth Yacht Club.
- 2.2- The Race will finish in the waters on Nantucket Sound, south of the Hyannis harbor entrance.
- 2.3- The rated distance for the race is 15.6 nm.
- 2.4- Refer to NOAA Charts #13237 and #13229

### 3- Race Committee Communications

- 3.1- The Race Committee shall post starting times on Yachtscoring and may hail via VHF, on channel 71.
- 3.2- The Race Committee will attempt to hail OCS boats on VHS Radio, channel 71.
- 3.3- The Race Committee may distribute Sailing Instructions on the water for those boats that need them.
- 3.4- The Race Committee may broadcast the position of the finish line on channel 71.

### 4- The Start

- 4.1- The starting line for the Race to Hyannis will be approximately 0.2 nm east of Falmouth Lighted Red Bell Buoy # 16, south of the Falmouth Inner Harbor entrance.
- 4.2 - Races shall be started using the starting times as stated in Addendum #1.
- 4.3 - Yachts starting before their starting time will be assessed a 1-minute time penalty in addition to the time they were over early. This Changes RRS 29.
- 4.4- All boats must pass through the starting line in an easterly direction.
- 4.5- The starting line will be between the orange flag on the Race Committee boat and the nearby inflatable mark. If the Race Committee boat cannot be anchored, the starting line will be between a pair of inflatable marks with the Race Committee boat standing by at one end of the line to make sound and flag signals and identify OCS penalties.

4.6- Eastern Daylight Time will be used for all starting signals

4.7- The warning signal will be at 1000 EDT on Friday, May 27, 2022. The warning flag will be a square, red flag with the letters "PHRF". The alternate flag for the warning signal is numeric pennant one.

4.8- The preparatory signal will be one minute after the warning signal. The preparatory flag will be signal flag "P".

4.9- No yacht shall start 5 minutes after the last scheduled start.

## **5 – Course Requirements**

5.1 - The following marks must be left to port:

1 – Wreck Shoal Lighted Red Bell Buoy #8

2 – Hodges Rock Red Nun Buoy #2

5.2 - A yacht may not sail through the area of L'Hommedieu Shoal, bounded by Green Can #15 on the west, Green Can #13 on the north and Green Can #11 on the east.

## **6– The Finish**

6.1- The finish line will be located approximately 1.7 nm from Hodges Rock Red Nun Buoy #2 at approximately 45 degrees, magnetic.

6.2- The finish line will be between the orange flag on the Race Committee boat and the nearby inflatable mark. If the Race Committee boat cannot be anchored, the finish line will be between a pair of inflatable marks with the Race Committee boat standing by at one end of the line to identify finishers.

## **7– Time Limit**

7.1- Racing ends 1600 EDT. All boats that have not finished by that time will be scored "Did Not Finish".

## **8– Protests and requests for Redress**

8.1- If you intend to protest, you must notify the Race Committee on the Finish Boat immediately after you finish and clear the finish line. No protest will be accepted after 1600 EDT on the day of the race.

8.2-Protest hearings will be scheduled at the Falmouth Yacht Club as soon as possible following the Figawi Race.

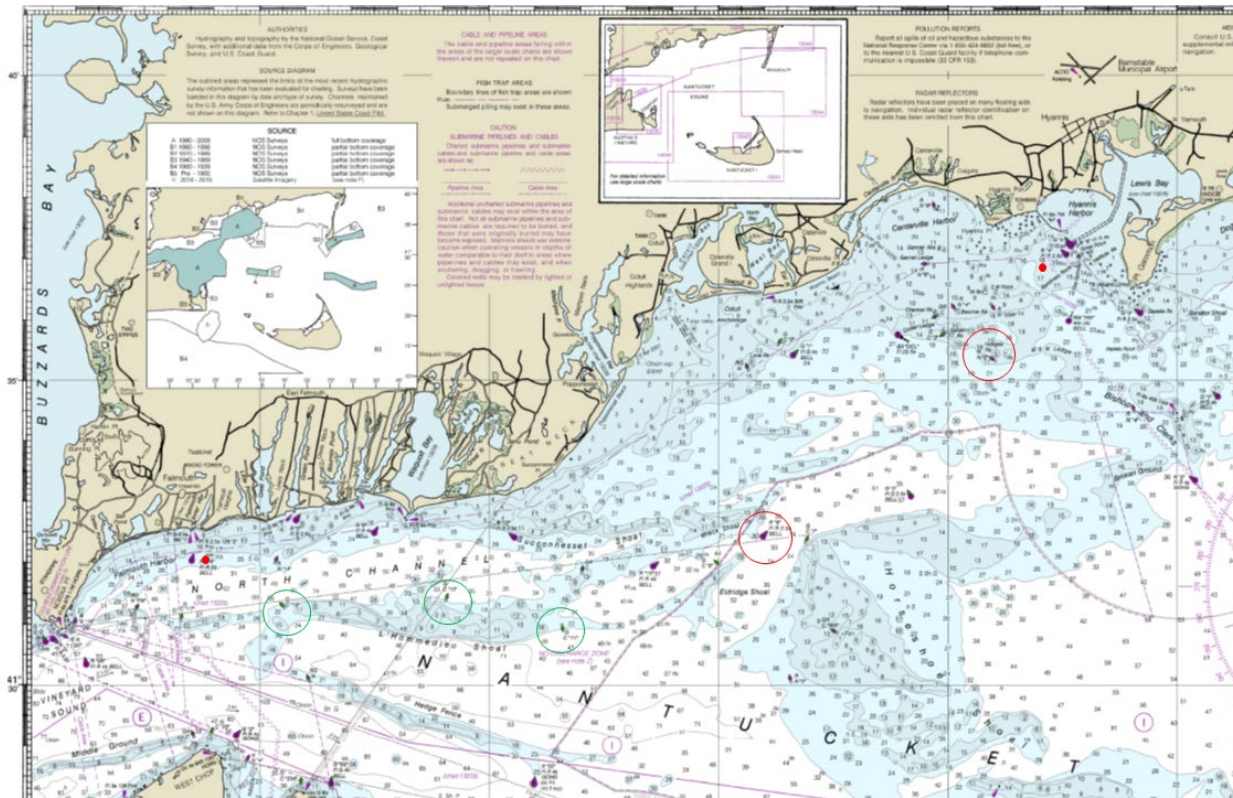
## **9– Disclaimer of Liability**

9.1-Competitors participate in the Falmouth Yacht Club Race to Hyannis entirely at their own

risk. See Rule 4, Decision to Race, in the Racing Rules of Sailing. Falmouth Yacht Club will not accept any liability for material damage or personal injury or death sustained in conjunction with, or prior to, during or after the race.

### 10 – Buoy positions (From USCG Light List Volume 1, Atlantic Coast)

Falmouth Lighted Bell Buoy 16	41-32-02.764N	070-36-28.986W
Wreck Shoal Lighted Bell Buoy 8	41-32-25.971N	070-24-01.967W
Hodges Rock Buoy 2	41-35-23.303N	070-18-58.428W



**For reference only—do not use for navigation!**

## **Addendum 1**

Starting times