



## **2015 FALL BAY RACE/LEUKEMIA CUP KICK-OFF**

St. Petersburg Yacht Club

St. Petersburg Florida

October 9-10, 2015

### **SAILING INSTRUCTIONS**

#### **1 RULES**

This regatta will be governed by the rules as defined in *The Racing Rules of Sailing*, and the current WFPHRF Class Rules. This is a WFPHRF Category 4 event. As allowed by RRS 88.2, the US Sailing prescriptions to RRS 60, 63.2, & 63.4 do not apply to these classes.

#### **2 NOTICES TO COMPETITORS**

Notices to Competitors will be posted on the official bulletin board located at the St. Petersburg Yacht Club main docks.

#### **3 CHANGES TO SAILING INSTRUCTIONS**

Any change to the sailing instructions will be posted by 0800 on the day it will take effect, except that any change to the schedule of races will be posted by 2000 on the day before it will take effect.

#### **4 SIGNALS MADE ASHORE**

Signals made ashore will be displayed on the St. Petersburg Yacht Club Flagpole.

#### **5 SCHEDULES OF RACES**

**5.1** Saturday, October 10, 2015, one race is scheduled for the Non-Spinnaker, Racer/Cruisers and Cruisers classes. Three races are scheduled for Spinnaker and One Design.

**5.2** The Warning signal for the first start on Saturday October 10, 2015 for the Non-Spinnaker, Racer/Cruiser and Cruiser classes will be 1200. The Warning signal for the first start on Saturday October 10, 2015 for the Spinnaker and One Design classes will be 1215.

**5.3** One Race shall constitute a regatta.

**5.4** If any class does not have 5 or more entries, starts will be combined.

#### **6 CLASS FLAGS**

The class flags will be colored squares. See 10.5 below.

#### **7 RACING AREAS**

The racing area will be east of the St. Petersburg Pier/Pinellas Channel ESE of the St. Petersburg Pier.

#### **8 COURSES**

**8.1** The courses for the Spinnaker and One Design classes will be as described in Diagram A.

**8.2** The courses for the Non-Spinnaker, Racer/Cruiser, and Cruiser classes will be as described in Appendix B & C.

**8.3** No later than the warning signal, the RC Signal boat will display the course and approximate compass bearing to the first mark.

#### **9 MARKS**

**9.1** Mark 1, 2, and 3 as shown in Diagram A will be large yellow tetrahedrons.

**9.2** New marks as provided in instruction 11 (Change of Course) will be a large orange sphere.

**9.3** The starting and finish marks for all courses will be orange spheres.

**9.4** Marks as shown in Appendix B will be fixed government marks.

## 10 THE START

10.1 Starting signals will be in accordance with RRS 26.

10.2 The starting line shall be between a staff displaying an orange flag on the race committee signal boat and an orange sphere.

10.3 Boats shall check in before the warning signal for their class by passing the stern of the race committee signal boat for their class on a starboard tack. All boats shall give their boat name, sail number, class and division. Only the race committee may protest boats for not checking in properly. This changes RRS 60.1 & 60.3.

10.4 Boats whose starting signal has not been made shall stay clear of the starting area.

10.5 The starting order shall be:

| <u>START</u> | <u>CLASS</u>         | <u>FLAG</u> |
|--------------|----------------------|-------------|
| First Start  | Race/Cruiser         | Yellow      |
| Second Start | Non-Spinnaker        | Purple      |
| Third Start  | Cruiser              | Grey        |
| First Start  | Spinnaker/One-Design | White       |

## 11. CHANGE OF THE NEXT LEG OF THE COURSE (for Spinnaker/One-design only)

To change the next leg of the course, the race committee will lay a new mark (or move the finishing line) and remove the original mark as soon as practicable. When in a subsequent change a new mark is replaced, it will be replaced by an original mark.

## 12 RECALLS

12.1 The race committee may, after the starting signal, hail the sail numbers of the OCS boats that have not complied with RRS 29.1 & 30.1 on VHF Channel 63. The delay of such a hail, the order of hail or failure of a competitor to hear such a hail shall not be grounds for granting redress. This changes RRS 62.1(a).

12.2 If the race committee signals a general recall, the division that has been recalled shall start AFTER all other divisions have started. If more than one division has a general recall, then each recalled division shall restart in their respective starting position AFTER all other divisions have started. This changes RRS 29.2.

## 14 THE FINISH

The finishing line shall be between a staff displaying an orange flag on a race committee boat and a mark. See Addendum A.

## 15 ALTERNATIVE PENALTIES

Only the scoring penalty, RRS 44.3, (a), (b), and (c) will apply. Vessels will need to fill out the Alternative Acknowledgement Form provided on the Bulletin Board at the St. Petersburg Yacht Club docks.

## 16 TIME LIMITS

16.1 Spinnaker & One Design boats failing to finish within 60 minutes after the first boat in its class that sails the course and finishes will be scored DNF without a hearing.

16.2 The Non-Spinnaker, Racer/Cruiser & Cruiser time limit to finish the race is 1600. Any vessel not finished by the time limit will be scored DNF without a hearing. This changes RRS 35, 63.1, A4.1 and A5.

## 17 PROTESTS AND REQUESTS FOR REDRESS

17.1 Protest forms are available next to the official notice board.

17.2 A boat intending to protest about an incident that occurs in the racing area shall notify the race committee finish boat for her class of her intention at the finish line, including the sail number of the boat being protested. This changes RRS 61.

17.3 The protest time limit will be posted on the notice board.

**17.4** Written protests must be delivered to the race committee within 30 minutes of the race committee finish boat's (for their class) posted docking time.

**17.5** The protest notices required by RRS 63.2, and the notification of protests by the race committee or the protest committee required by RRS 61.1(b), will be posted on the official notice board as soon as possible after a protest has been delivered, but not later than 15 minutes after the protest time limit.

## **18 SCORING**

**18.1** Corrected times for individual races will be calculated for the PHRF boats using the following WFPHRF ratings: The Random Leg Course Rating (RLC) will be used for the Non-Spinnaker, Racer/Cruiser and Cruiser classes. The BUOY rating will be used for the Spinnaker Class.

**18.2** The Low Point System of Appendix A of the racing rules will apply, except that no score will be excluded.

## **19 COMMUNICATIONS**

**19.1** The race committee will monitor VHF channel 63 for **courtesy** communications from/to regatta participants. Nothing said over VHF Channel 63 for **courtesy** reasons shall be grounds for protests or redress.

**19.2** A boat shall neither make radio transmissions while racing nor receive radio communications not available to all boats. This restriction also applies to cell phones. The only exception is SI 19.1.

**19.3** The race committee will monitor VHF channel 63 and 16 after the start.

## **20 SAFETY**

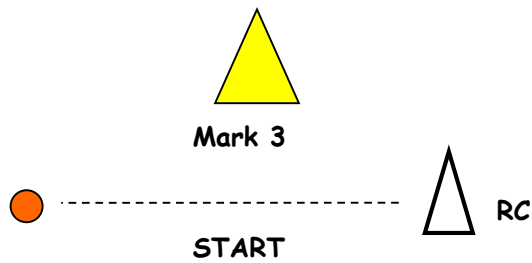
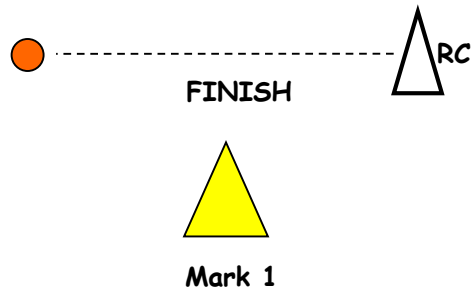
A boat that retires from a race shall notify the race committee signal boat for her class, as soon as possible on Channel 63 and/or 16. The Race Committee may protest a competitor who fails to notify the committee when retiring.

## **21 DISCLAIMER OF LIABILITY**

Competitors participate in this regatta at their own risk. See RRS 4, Decision to Race. The organizing authority, the sponsors, the race committee, officers and board of directors of SPYC, and all those involved in these organizations will not accept any responsibility for material damage or personal injury or death sustained in conjunction with or prior to, during or after this regatta.

**Diagram A**  
Courses for Spinnaker and One Design

DIAGRAM (not to scale)



**SPINNAKER Courses**

**COURSE A:** Start - 1 - 3 - 1 - Finish at "START"

**COURSE B:** Start - 1 - 3 - 1 - 3 - 1 - Finish at "START"

**COURSE C:** Start - 1 - 3 - 1 - 3 - Finish at "FINISH"

**All Marks shall be left to port**

APPENDIX B

Saturday Marks and Courses for Non-Spinnaker, Racer/Cruiser, and Cruising

The Starting Line will be in the vicinity of Marks "E/D".

The Finish line will be the Entrance marker to Bayboro Harbor described as:

FL (2+1) G6S 16ft 3M "S"

All mark positions and distances are approximate. See latest NOAA for exact locations.

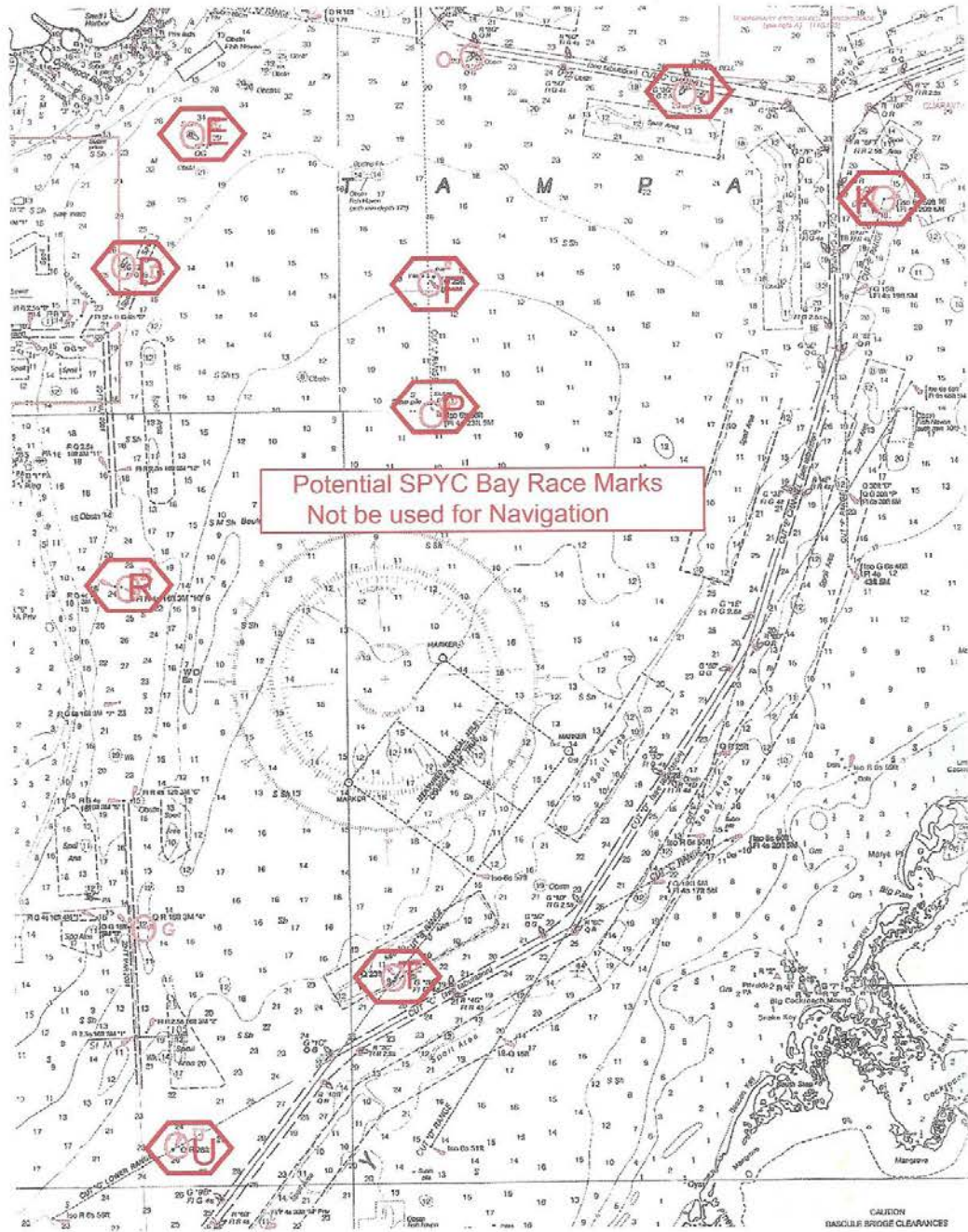
MARKS

|          |                     |                                    |          |          |
|----------|---------------------|------------------------------------|----------|----------|
| Mark "D" | G "3" Fl G 4s       | 1 mile ESE of the St. Pete Pier    | 27 46.0N | 82 36.5W |
| Mark "E" | G "1" QG            | 1.2 miles ENE of the St. Pete Pier | 27 46.8N | 82 36.1W |
| Mark "F" | Q 25 ft 5M          | Front Range Cut J Channel          | 27 45.9N | 82 34.3W |
| Mark "J" | G "3G" Fl G 2.5s    | Cut G Channel                      | 27 47.1N | 82 32.5W |
| Mark "K" | Iso 6s 50ft 16      | Back Range Cut E Channel           | 27 46.3N | 82 31.0W |
| Mark "P" | Iso 6s 62 ft        | Back Range Cut J Channel           | 27 45.0N | 82 34.3W |
| Mark "R" | Fl R 4s 16ft 3M"10" | Pinellas Channel                   | 27 43.9N | 82 36.6W |
| Mark "T" | Q 23 ft             | Front Range Cut B Channel          | 27 41.3N | 82 34.7W |
| Mark "U" | QR 26 ft            | Lower Range Cut C Channel          | 27 40.2N | 82 36.3W |

| <u>COURSE</u> | <u>MARKS TO BE ROUNDED</u>   | <u>SIDE TO BE ROUNDED ON</u>      | <u>APPROX. DISTANCE</u> |
|---------------|------------------------------|-----------------------------------|-------------------------|
| #1            | START-J-E-P-FINISH           | PORT Except: P round to starboard | 10.2NM                  |
| #2            | START-K-E-P-FINISHES         | PORT Except: P round to starboard | 12.4NM                  |
| #3            | START-F-K-E-P-FINISHES       | PORT Except: P round to starboard | 11.9NM                  |
| #4            | START-F-K-E-P-K-FINISH       | PORT                              | 17.2NM                  |
| #5            | START-F-K-E-T-P-FINISH       | PORT                              | 21.4NM                  |
| #6            | START-F-J-E-T-FINISH         | PORT                              | 15.3NM                  |
| #7            | START-F-K-T-R-FINISH         | STDB                              | 14.5NM                  |
| #8            | START-F-K-R-FINISH           | STDB                              | 10.9NM                  |
| #9            | START-F-T-FINISH             | STDB                              | 11.4NM                  |
| #10           | START-F-T-U-FINISH           | STDB                              | 14.1NM                  |
| #11           | START-K-T-U-FINISH           | STDB                              | 15.9NM                  |
| #12           | START-F-P-T-U-D-F-FINISH     | STDB                              | 18.5NM                  |
| #13           | START-F-P-T-U-D-F-D-F-FINISH | STDB                              | 21.9NM                  |
| #14           | START-K-T-U-D-F-FINISH       | STDB                              | 22.5NM                  |
| #15           | START-F-P-T-U-R-P-R-FINISH   | STDB                              | 18.8NM                  |
| #16           | START-K-T-U-R-P-R-FINISH     | STDB                              | 23.2NM                  |

**Diagram is not to be used for Navigation**

APPENDIX C



## **Addendum A**

### **Signal and Finish Boats**

#### **Signal Boat**

The starting signal boat for **all** competitors will be a 35 ft. Sea Ray "Baby Doll Too VI". The pin boat will be "Black Boat", a Boston Whaler. For the Spinnaker and One Design classes, the mark boat will be "Osprey", 23 ft. Center Console and "Coast Pilot" will be stationed at the windward mark.

#### **Finish Boats**

For the Spinnaker and One Design classes, the finish boat will be "Baby Doll" or "Coast Pilot" depending on the course to be sailed or whether there is a shortened course.

For the Non-Spinnaker, Racer/Cruiser and Cruiser classes, the finish boat will be "Dream Machine", a 40+ ft. Sea Ray. If the course is to be shortened, another finish boat **may** be used for some of the classes. This vessel may be "Black Boat" or "Osprey".