



Antigua Classic Yacht Regatta 2022

SAILING INSTRUCTIONS

1. RULES

- 1.1 The event is governed by the rules as defined in The Racing Rules of Sailing.
- 1.2 The CSA Classic Rating Rule will apply for all boats except the Dragon Classes
- 1.3 The CSA Minimum Safety Rules will apply.

2. CHANGES TO SAILING INSTRUCTIONS

- 2.1 Any change to the sailing instructions will be posted before 0900 on the day it will take effect, except that any change to the schedule of races will be posted by 2000 on the day before it will take effect.

3. COMMUNICATIONS WITH COMPETITORS

- 3.1 Notices to competitors will be posted on the official notice board located at [2022 Antigua Classic Yacht Regatta on Yacht Scoring - A complete web based regatta administration and yacht scoring program](#)
- 3.2 The race office is located at Locman Lounge at the Antigua Yacht Club Marina.
- 3.3 On the water, the race committee intends to monitor and communicate with competitors on VHF radio channel 06.
- 3.4 The following communications will be made by the race committee on VHF channel 06. The list may include confirmation of any of the following: time checks, race area, schedule changes, starting order of classes, location of race committee vessel, alternate preparatory signals, courses, change of courses, shortening, postponement, abandonment, starting signals, recalls, next start sequence, times of finishers (to calculate time limits). If the race committee displays flag V, alternate VHF channel 12 will be used.
- 3.5 While racing, except in an emergency, a boat shall not make voice or data transmissions and shall not receive voice or data communication that is not available to all boats.

4. SCHEDULE OF RACES

- 4.1 The scheduled time of the warning signal for the first race each day is 0950hrs. See Appendix 2
- 4.2 To alert boats that a race or sequence of races will begin soon, the orange starting line flag will be displayed with one sound at least five minutes before a warning signal is made.

4.3 On the last scheduled day of racing no warning signal will be made after 1230hrs.

5. RACING AREA

5.1 The racing area is waters on the South Coast of Antigua. See Appendix 1.

6. COURSES

6.1 The course charts in Appendix 1 shows the courses and their length, the order in which the marks are to be passed and the side on which each mark is to be left.

7. MARKS

7.1 All Rounding and passing marks will be orange inflatable buoys. [The marks for the Dragons will be orange round inflatables]

7.2 The Pin End Starting Mark will be an orange cylinder.

7.3 Failure of any mark to be in a position different from where described on the Course Chart, [Appendix 1] will not be grounds for requests for redress.

8. THE START

8.1 Races will be started as follows:

10 minutes – Warning signal displayed with one sound signal

5 minutes - Preparatory signal displayed with one sound signal

1 minute - Preparatory signal lowered & one long sound signal

Start - Warning signal lowered with one sound signal. This changes RRS26

8.2 The preparatory signal will be a solid blue flag. This changes RRS26

8.3 The starting line will be between the orange flag on the committee board and an orange inflatable buoy to the south.

8.4 Any boat recorded as OCS at their start will receive a 15-minute time penalty added to their elapsed time. This changes RRS 29.1 and RRS 30. [Not applicable to the Dragons]

8.5 The intended starting order and class flags will be as follows:

Start order	Intended signal	warning	Class[es]	Class flag colour
1	0950		Classic and Traditional	Green
2	1000		Historic	Yellow
3	1010		Spirit of Tradition and Vintage	White
4	1020		Schooner	Pink
5	1030		Tall Ships	Brown

9. THE FINISH

9.1 The finishing line is from the orange flag on the committee boat and the orange inflatable buoy to the South.

10. PENALTY SYSTEM

10.1 The Scoring Penalty, RRS 44.3, applies.

11. HEARING REQUESTS

11.1 For each class, the protest time limit is 60 minutes after the last boat in that class finishes the last race of the day or the race committee signals no more racing today, whichever is later. The time will be posted on the official notice board. The protest time limit may be different for different race areas.

11.2 Protest forms are available from the race office at Locman Lounge at the Antigua Yacht Club Marina. See RRS 61.3 and 62.2.

11.3 Notices will be posted no later than 30 minutes after the protest time limit to inform competitors of hearings in which they are parties or named as witnesses. Hearings will be held in the protest room, located at Locman Lounge, at the Antigua Yacht Club Marina, beginning at the time posted.

12. SCORING

12.1 The scoring system is as described in Appendix A of RRS.

12.2 Races are required to be completed to constitute a series 1.

12.3 A boat's series score is the total of her race scores. This changes RRS A.2.1

12.4 Rule A5.3 applies.

13. SAFETY REGULATIONS

13.1 A boat that retires from a race shall notify the race committee at the first reasonable opportunity.

14. REPLACEMENT OF CREW OR EQUIPMENT

14.1 Substitution of competitors is not allowed without prior written approval of the organizing authority.

14.2 Substitution of damaged or lost equipment is not allowed unless authorized in writing by the organizing authority. Requests for substitution shall be made to the committee at the first reasonable opportunity, which may be after the race.

15. EQUIPMENT AND MEASUREMENT CHECKS

15.1 A boat or equipment may be inspected at any time for compliance with the class rules, notice of race and sailing instructions.

16. PRIZES

16.1 Prizes will be given in each class for the winner.

17. RISK STATEMENT

17.1 RRS 3 states: 'The responsibility for a boat's decision to participate in a race or to continue to race is hers alone.' By participating in this event each competitor agrees and acknowledges that sailing is a potentially dangerous activity with inherent risks. These risks include strong winds and rough seas, sudden changes in weather, failure of equipment, boat handling errors, poor seamanship by other boats, loss of balance on an unstable platform and fatigue resulting in increased risk of injury. Inherent in the sport of sailing is the risk of permanent, catastrophic injury or death by drowning, trauma, hypothermia or other causes. Each venue jurisdiction may need a different or modified version of this risk statement.

18. INSURANCE

- 18.1 Each participating boat shall be insured with adequate valid third-party liability insurance for the duration of the Regatta. This authority includes the Dragons.

SAILING INSTRUCTIONS FOR THE DRAGONS

1. CREW

1.1 There shall not be more than 4 persons on board while racing. A boat shall compete with the same number of crew throughout an event.

1.2 The use of any apparatus or contrivance (other than fixed hand holds on the inside face of the cockpit coaming) the purpose of which is to support or assist in supporting a member of the crew outboard or partially outboard is prohibited. When hiking no part of the crew's body between the middle of the thigh and feet shall be outboard of the sheerline.

1.3 The total weight of the crew wearing lightweight clothing shall not exceed 285 kg. If a crew has been officially weighed in at the regatta, re-weighing during the regatta shall not take place unless there is a change of crew.

2. SUPPLIED BOATS

2.1 Boats will be supplied by the organizing authority. See Addendum A below.

3. HAUL-OUT RESTRICTIONS

3.1 Boats shall not be hauled out during the event except with and according to the terms of prior written permission of the Organizing Authority.

4. RISK STATEMENT

4.1 RRS 3 states: 'The responsibility for a boat's decision to participate in a race or to continue to race is hers alone.' By participating in this event each competitor agrees and acknowledges that sailing is a potentially dangerous activity with inherent risks. These risks include strong winds and rough seas, sudden changes in weather, failure of equipment, boat handling errors, poor seamanship by other boats, loss of balance on an unstable platform and fatigue resulting in increased risk of injury. Inherent in the sport of sailing is the risk of permanent, catastrophic injury or death by drowning, trauma, hypothermia or other causes. Each venue jurisdiction may need a different or modified version of this risk statement.

ADDENDUM A

BOATS SUPPLIED BY THE ORGANIZING AUTHORITY

A1 BOATS

A1.1 Boats will be supplied for all competitors, who shall not modify them or cause them to be modified in any way except that (a) a compass may be tied or taped to the

hull or spars; (b) wind indicators, including yarn or thread, may be tied or taped anywhere on the boat; (c) hulls, centreboards and rudders may be cleaned, but only with water; (d) adhesive tape may be used anywhere above the water line; and (e) all fittings or equipment designed to be adjusted may be adjusted, provided that the class rules are complied with.

A1.2 All equipment supplied with the boat for sailing purposes shall be in the boat while afloat.

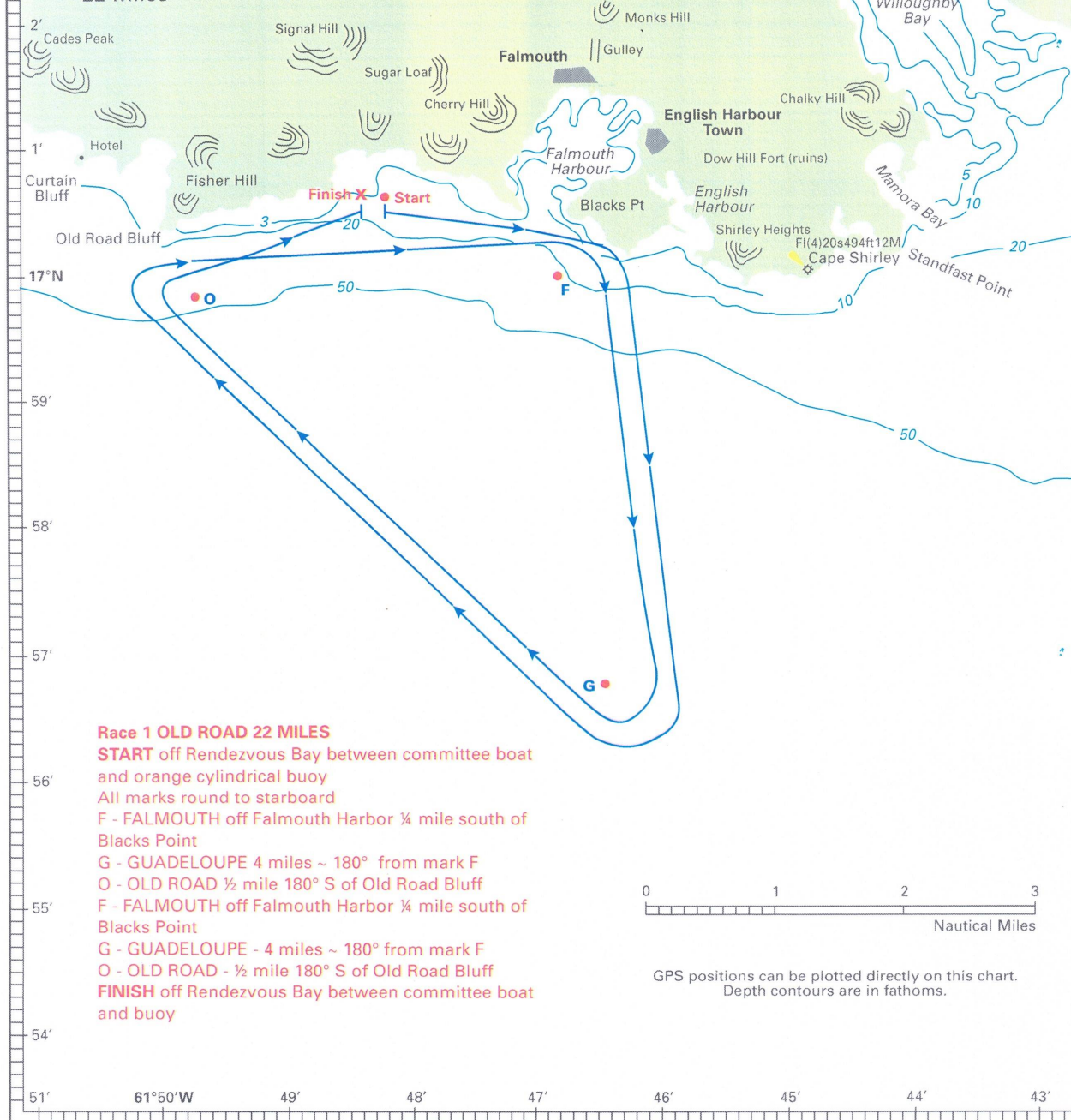
A1.3 The penalty for not complying with one of the above instructions is disqualification from all races sailed in which the instruction was broken.

A1.4 Competitors shall report any damage or loss of equipment, however slight, to the organizing authority's representative immediately after securing the boat ashore. The penalty for breaking this instruction, unless the protest committee is satisfied that the competitor made a determined effort to comply, is disqualification from the race most recently sailed.

A1.5 Class rules requiring competitors to be members of the class association do not apply

RACE 1 Old Road

≈ 22 Miles

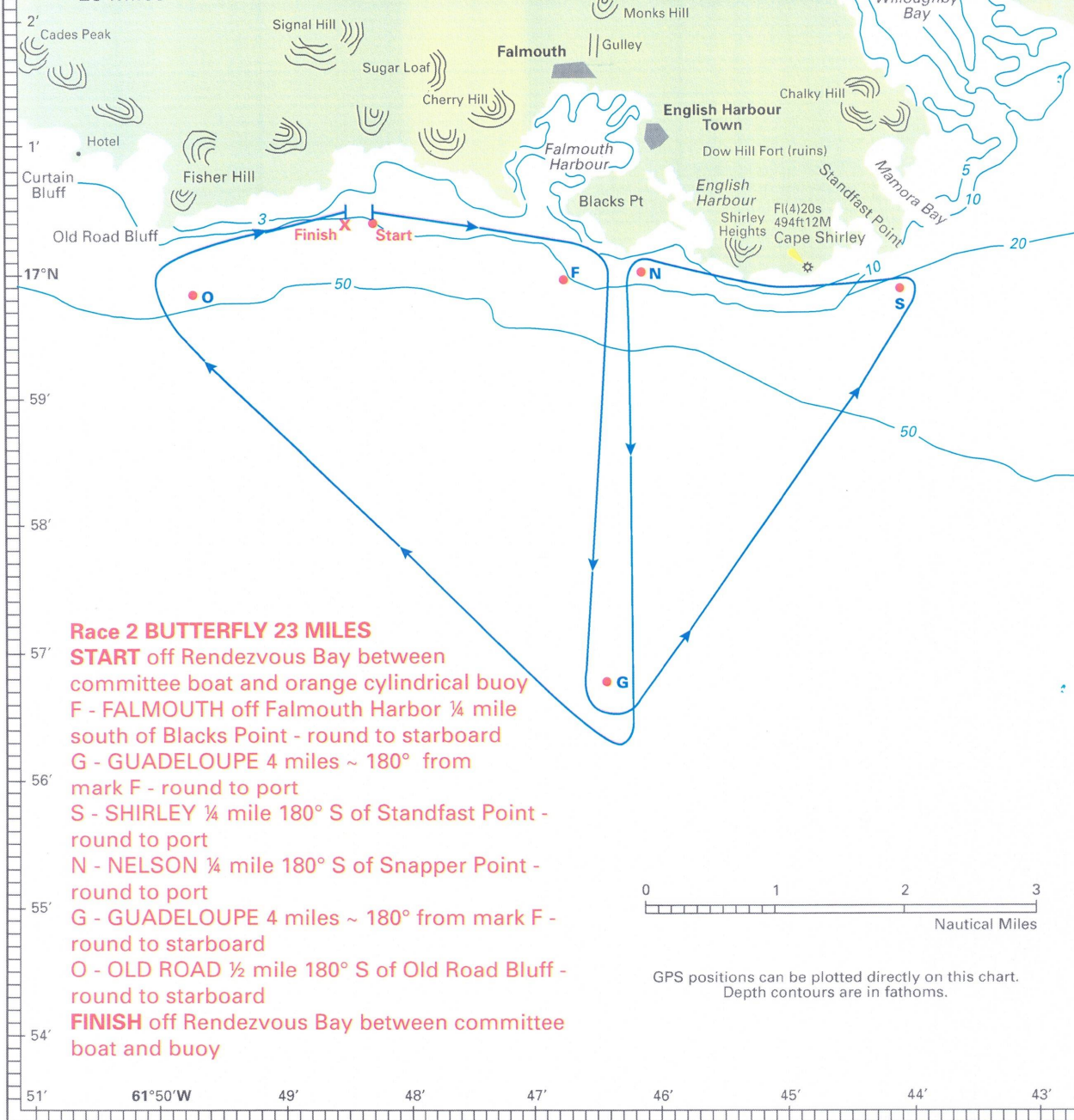


See Imray - Iolaire chart A27 Antigua

Street's Guides to the Eastern Caribbean are available on Amazon.com
 For information on guides, charts, hurricanes plus insurance visit www.streetiolaire.com

RACE 2 Butterfly

≈ 23 Miles



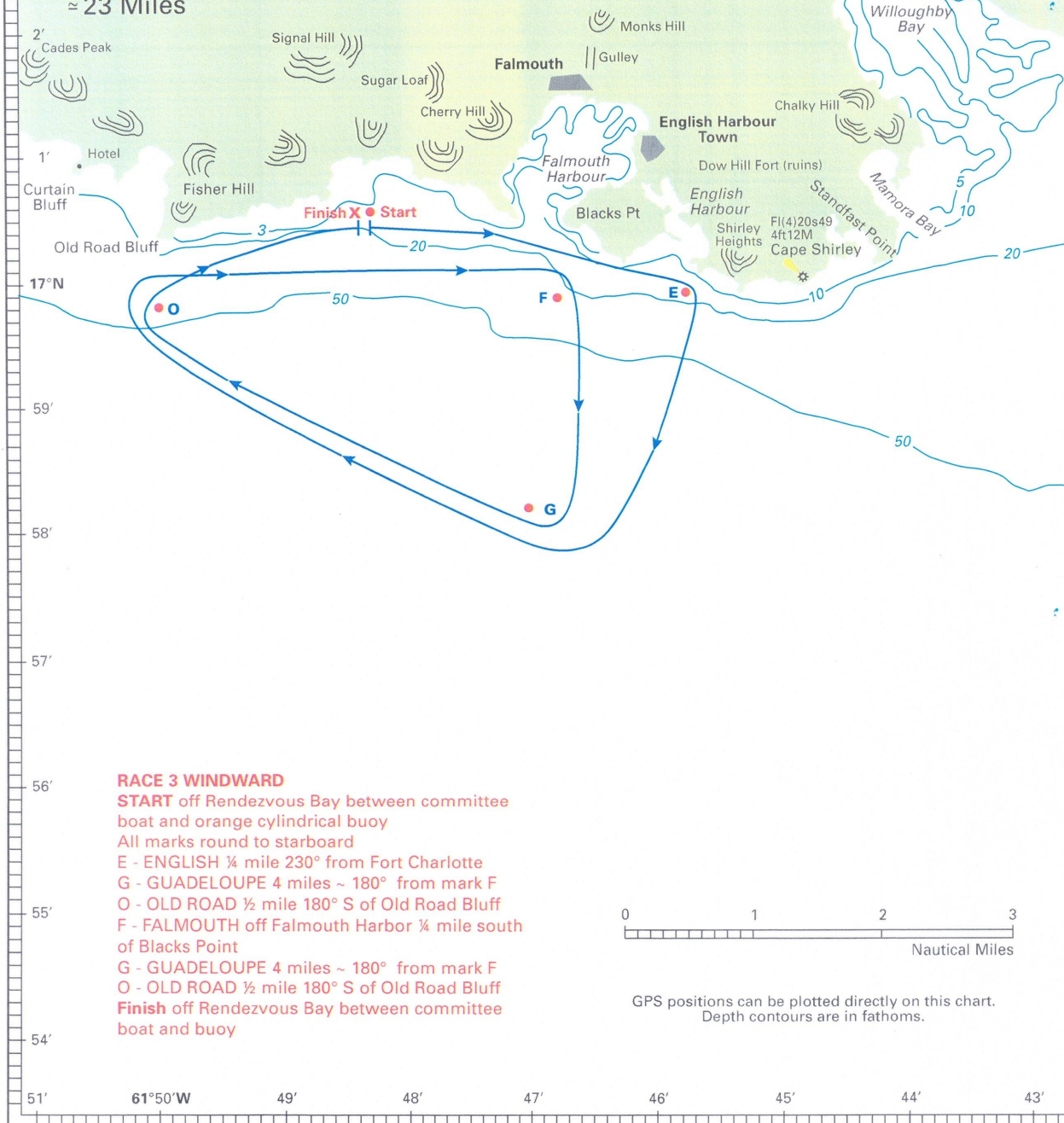
Imray



See Imray - Iolaire chart A27 Antigua

Street's Guides to the Eastern Caribbean are available on Amazon.com
 For information on guides, charts, hurricanes plus insurance visit www.streetiolaire.com

RACE 3 Windward ≈ 23 Miles



See Imray - Iolaire chart A27 Antigua

Street's Guides to the Eastern Caribbean are available on Amazon.com
 For information on guides, charts, hurricanes plus insurance visit www.streetiolaire.com