



# American Yacht Club Friday Night Sunset Series May 20th to August 5th, 2022 SAILING INSTRUCTIONS

## 1. RULES

The regatta will be governed by the rules as defined in the Racing Rules of Sailing, including the US Sailing Prescriptions; the current PHRF regulations, as administered by the YRA of Long Island Sound (YRALIS); and the US Sailing Special Equipment Requirement (USSER) for Nearshore races; except as any of these are changed by this Notice of Race and by the Sailing Instructions.

## 2. NOTICES TO COMPETITORS

Notices to competitors will be posted on the official notice board on the regatta website at <https://yachtscoring.com/emenue.cfm?eid=15236> and the Race Committee notice board located on the front porch of American Yacht Club.

## 3. CHANGES TO SAILING INSTRUCTIONS

Any change to the Sailing Instructions will be posted before 1800 on the day it will take effect.

## 4. SIGNALS MADE ASHORE

Signals made ashore will be displayed from a flag halyard on a Race Committee signal boat at a dock at American Yacht Club. When flag AP is displayed ashore, '1 minute' is replaced with 'not less than 30 minutes' in the race signal AP.

## 5. SCHEDULE OF RACES

One race is scheduled for all Divisions on each Friday from May 20th to August 5th. The scheduled time of the warning signal for the first race each day is 1830. A Distance Race will be held on Sunday, July 3rd. Sailing in this event will count toward participation for the Sunset Series as set forth in the Sunset Series NOR, but it will be scored as a separate event.

## 6. EQUIPMENT

Each boat shall carry a radio capable of transmitting and receiving VHF 71 as well as channel 16.

Spinnakers shall not be used except on the July 3rd Distance Race. For regular Friday Night Sunset Series racing, boats shall not perform sail changes except in the case of serious damage to a sail.

## **7. CLASS FLAGS & DIVISIONS**

Divisions will be established by the Race Committee and will be published in the Scratch Sheet for this event. The Race Committee reserves the right to change the number of divisions. Competitors are encouraged to fly their Class Flags from their backstays. Boats without backstays may fly them from a starboard shroud.

<u>Division</u>	<u>Class Flag</u>
Division 1	Numeral Pennant 1
Division 2	Numeral Pennant 2
Division 3	Numeral Pennant 3

## **8. RACING AREA**

The racing area will be in the vicinity of Bell 42. It is expected that the starting area will be located within one mile of Bell 42.

## **9. COURSE AND MARKS**

The marks will be those that are listed on Appendix A to these Sailing Instructions. The course will be designated by displaying an easel board on the Race Committee signal boat. Marks shall be rounded in the order displayed on the course board reading from top to bottom. The numeral 2 following the letters on the course board means that the course displayed shall be sailed twice around. The Race Committee signal boat will announce the course over Channel 71 before the first warning signal. Unless the Race Committee signal boat provides a different instruction, all marks should be rounded to port.

## **10. STARTING AND FINISHING LINES; STARTING SYSTEM**

The starting line will be between the course side of an orange mark and a staff with an orange flag on the Race Committee signal boat. The finishing line will be between the course side of an orange mark and a staff with a blue flag on the Race Committee signal boat.

Races will be started in accordance with RRS 26 with the following modification: One minute before the warning of the first class, the Race Committee signal boat will make a series of short horn sounds to call attention.

After the starting signal, the Race Committee signal boat will attempt to notify OCS boats by broadcasting their sail numbers on VHF Channel 71. Failure of a boat to see or hear her recall notification, and the timing and order of any hail, shall not be cause for redress. This changes RRS 62.1 (a).

## **11. TIME LIMIT**

The time limit for the first boat in each division to finish the daily race will be at Sunset in New York as listed by the 2022 edition of Eldridge using GPS time. Boats, in their respective divisions, finishing more than 45 minutes after the first boat that sails the course in each division and finishes will be scored DNF without a hearing and scored points equal to the finishing place one more than the number of boats that started that race. This changes RRS 35 and A4.

## **12. PROTESTS**

Protest forms shall be delivered to the front desk at American Yacht Club within one hour after the later of Race Committee finish boat or signal boat docks. The protest time limit and a list of protests received will be posted on the notice board. Hearings will be held at American Yacht Club at a time and date scheduled by the American Yacht Club Protest Committee, which shall be prior to the awarding of trophies for the series.

## **13. SCORING AND TROPHIES**

The Race Committee will post results on the regatta website and the Race Committee notice board.

One race is required to be completed to constitute the Sunset Series. To be eligible for series prizes, a boat must start in at least 50% of the races that are completed. The Distance Race will count in both the numerator and denominator for determining eligibility. The Cox-Sprague Scoring System as published by the YRALIS will apply. Boats will be scored using the PHRF handicaps provided by the YRALIS and course distance. A boat racing in at least 90% of the Sunset Series races shall exclude its 2 worst scores if there are 8 or more races in the Sunset Series and shall exclude its worst score if there are 6 or more, but fewer than 8, races in the Series. A boat racing in 75% of the Sunset Series races shall exclude its worst score if there are at least 7 races in the Sunset Series. The number of races required for excluding a boat's worst score or scores will be rounded to the nearest whole number. The Distance Race will be included in both the numerator and denominator to determine whether a boat may exclude its worst score or scores.

Trophies will be awarded at the American Yacht Club annual awards dinner to the boats with the best series score, as follows: To the three boats with the best series score if 10 or more boats qualify by starting in at least 50% of the races that are completed; to the two boats with the best series score if more than five but fewer than 10 boats qualify; and to the boat with the highest series score if five or fewer boats qualify. The Scotch Caps Trophy will be awarded to the boat with the best series score if at least five boats qualify. The American Yacht Club Sailing Committee may award daily prizes based upon PHRF handicaps that are adjusted to impose upon boats that finish first, second or third in any race a rating penalty for subsequent races. Adjusted handicaps will not be used in awarding series prizes.

## **14. WITHDRAWAL OR RETIREMENT**

A boat that withdraws before the start or retires from a race for any reason shall notify the Race Committee signal boat at the earliest opportunity on VHF channel 71.

## **15. NAVIGATION RULES**

All boats are cautioned to observe the Navigation Rules of the Road and to yield right of way to vessels restricted in their ability to maneuver, especially tugs and barges. Any boat observed to impede such traffic may be protested by the Race Committee signal boat, but not by a competitor.

## **16. RESPONSIBILITY FOR SAFETY, WAIVER & RELEASE**

By participating in this event and any related activity sponsored, undertaken, administered, managed, or allowed to be conducted by American Yacht Club, the owner, helmsman and each crew member agree, understand and accept, for themselves and their respective successors, assigns, representatives, administrators, executors, agents, heirs or any person acting or purporting to act on their behalf ("Releasers") that sailing is an inherently dangerous and unpredictable activity due to multiple factors that cannot be anticipated or predicted with certainty, including but not limited to weather, equipment failure or malfunction, and the actions of others on or off the water, injury, sickness and disease (including communicable diseases such as Covid-19). Releasers also agree, understand and accept that sailing presents inherent risks of serious bodily injury (including permanent disability, paralysis, and death, whether by drowning or otherwise, sickness and disease (including communicable diseases), property damage and other economic loss. Accordingly, and in consideration for being permitted to enter into and participate in this or any other sailing event sponsored, undertaken, administered, managed or allowed to be conducted by American Yacht Club, Releasers forever release and waive, to the fullest extent allowed by law, any and all claims, actions, accounts, causes of action and choses in action, whether in law, equity or admiralty, that Releasers now have, may have had or may come to have, against American Yacht Club, including its officers, directors, trustees, members, employees, agents, volunteers, staff, committees, and anyone acting on its behalf ("Releasees"), for anything arising out of or relating to Releasers' participation in such sailing events (including contracting communicable diseases such as Covid-19). Notwithstanding anything to the contrary, and without in any way limiting or lessening the effect or breadth of the foregoing release and waiver, and solely for the avoidance of doubt and clarification, Releasers agree, acknowledge and understand that this release and waiver applies to any and all claims of any kind at all against Releasees arising out of or relating to injuries, deaths, sickness and disease (including communicable diseases such as Covid-19), damage to vessels or damage to personal property sustained during or as a result of any and all sailing events sponsored, undertaken, administered, managed or allowed to be conducted by American Yacht Club.

**Appendix A**  
**Marks for the 2022 Sunset Series Letter Description**

A Green can "1" off Weeks Point  
B Red bell "6" off Mott Point (Hempstead Harbor)  
C Red nun "4" off Prospect Point  
D Red nun "2" off Prospect Point  
E Green gong "23" off Prospect Point  
F Green can "1" Northeast of Execution Rocks  
G Red bell "2" south of Hen & Chickens  
H Green bell "1" Northeast of Hen & Chickens  
I Green can "1" off Delancey Point  
J Red bell "42" off Scotch Caps  
K Red nun "40A" off Scotch Caps  
M Red bell "38" off Playland  
N Red bell "36" off Bluefish Shoal  
O Green gong "21" off Matinecock Point

W Inflatable buoy to windward of the Race Committee signal boat at the start\*

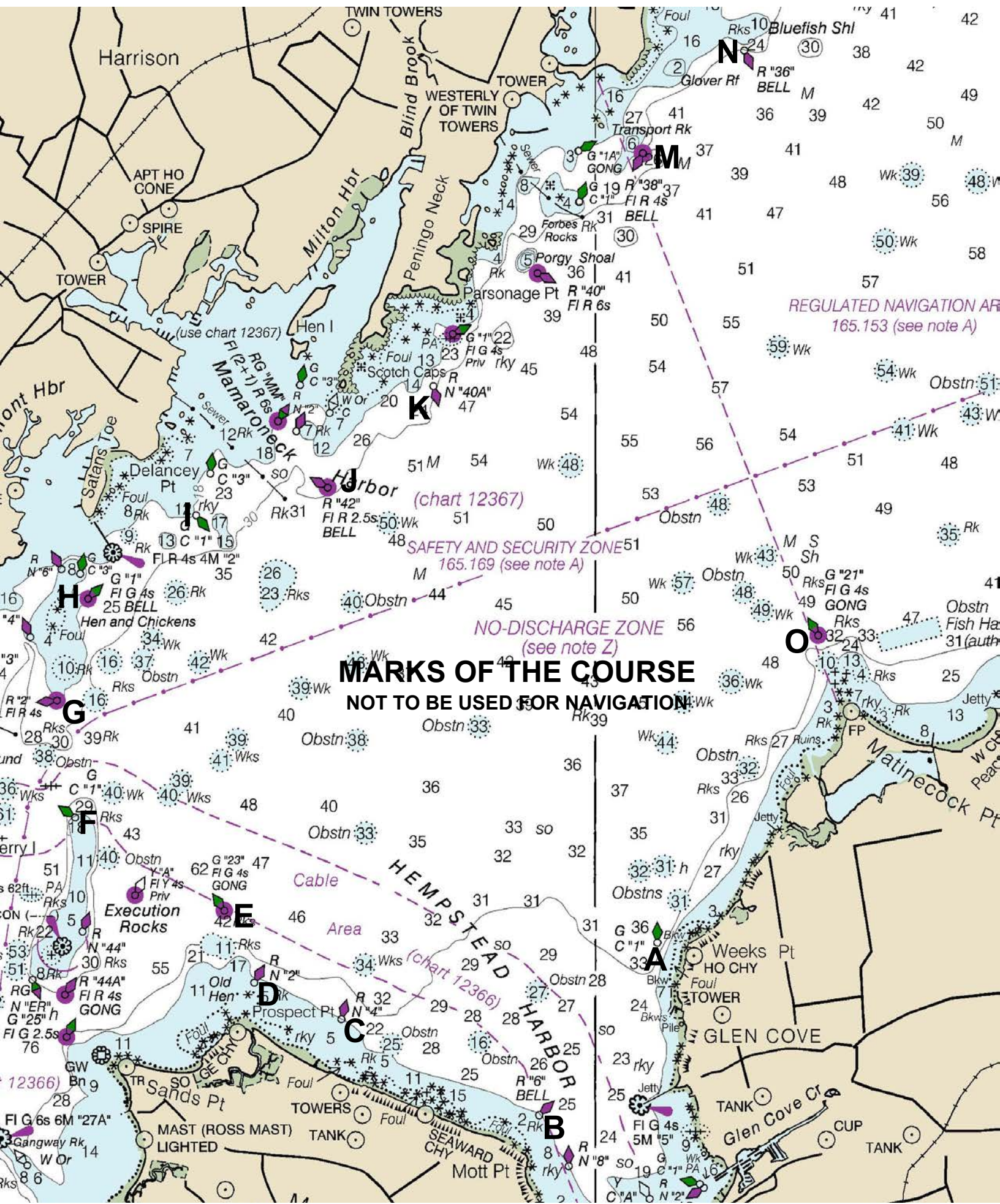
L Inflatable buoy to leeward of the Race Committee signal boat at the start\*

R Inflatable buoy perpendicular (90 Degrees) from Windward mark\*\*

\* The Race Committee signal boat will display on the course board the approximate magnetic bearing and the approximate distance in nautical miles from the Race Committee signal boat to marks L and W, if used. If both marks L and W are used, the bearing and distance to mark W will be displayed in a column that first follows the course letters. The bearing and distance to mark L will be displayed in a second column.

\*\*The approximate bearing of (R) will be a reach of no more than one mile bearing as close to 90 degrees from the wind as possible. No magnetic course heading will be displayed.





**MARKS OF THE COURSE  
NOT TO BE USED FOR NAVIGATION**

REGULATED NAVIGATION AREA  
165.153 (see note A)

SAFETY AND SECURITY ZONE  
165.169 (see note A)

NO-DISCHARGE ZONE  
(see note Z)

HEMPSTEAD HARBOR  
(chart 12366)

MAST (ROSS MAST)  
LIGHTED

Glen Cove Cr

CUP

TANK

TO FROM	A	B	C	D	E	F	G	H	I	J	K	M	N	O
<b>A</b>	<b>A</b> 226° 1.3 nm	268° 2.0 nm	277° 2.4 nm	287° 2.6 nm	295° 3.6 nm	305° 3.9 nm	314° 4.0 nm	326° 3.9 nm	337° 3.4 nm	351° 3.7 nm	012° 4.8 nm	018° 5.4 nm	042° 2.0 nm	
<b>B</b>	046° 1.3 nm	<b>B</b>	307° 1.3 nm	308° 1.9 nm	316° 2.3 nm	316° 3.4 nm	323° 3.9 nm	332° 4.2 nm	343° 4.2 nm	354° 4.0 nm	005° 4.5 nm	019° 5.9 nm	024° 6.6 nm	43° 3.3 nm
<b>C</b>	088° 2.0 nm	127° 1.3 nm	<b>C</b>	310° 0.6 nm	327° 1.0 nm	321° 2.0 nm	331° 2.6 nm	342° 3.0 nm	356° 3.3 nm	011° 3.2 nm	021° 4.0 nm	032° 5.6 nm	036° 6.4 nm	065° 3.7 nm
<b>D</b>	097° 2.4 nm	128° 1.9 nm	130° 0.6 nm	<b>D</b>	349° 0.5 nm	326° 1.5 nm	337° 2.1 nm	349° 2.5 nm	005° 2.9 nm	021° 3.0 nm	030° 3.8 nm	038° 5.5 nm	041° 6.4 nm	072° 4.0 nm
<b>E</b>	107° 2.6 nm	136° 2.3 nm	147° 1.0 nm	169° 0.5 nm	<b>E</b>	316° 1.1 nm	334° 1.6 nm	350° 2.1 nm	008° 2.4 nm	027° 2.6 nm	035° 3.5 nm	042° 5.3 nm	044° 6.1 nm	079° 4.0 nm
<b>F</b>	115° 3.6 nm	136° 3.4 nm	141° 2.0 nm	146° 1.5 nm	136° 1.1 nm	<b>F</b>	002° 0.7 nm	016° 1.3 nm	033° 2.0 nm	050° 2.5 nm	052° 3.4 nm	053° 5.3 nm	054° 6.2 nm	090° 4.6 nm
<b>G</b>	125° 3.9 nm	143° 3.9 nm	151° 2.6 nm	157° 2.1 nm	154° 1.6 nm	182° 0.7 nm	<b>G</b>	030° 0.7 nm	048° 1.4 nm	065° 2.1 nm	063° 3.0 nm	060° 4.9 nm	060° 5.8 nm	099° 4.7 nm
<b>H</b>	134° 4.0 nm	152° 4.2 nm	162° 3.0 nm	168° 2.5 nm	170° 2.1 nm	196° 1.3 nm	210° 0.7 nm	<b>H</b>	63° 0.8 nm	078° 1.6 nm	071° 2.5 nm	065° 4.3 nm	063° 5.2 nm	107° 4.5 nm
<b>I</b>	146° 3.9 nm	163° 4.2 nm	176° 3.3 nm	185° 2.9 nm	188° 2.4 nm	213° 2.0 nm	228° 1.4 nm	243° 0.8 nm	<b>I</b>	093° 0.9 nm	075° 1.7 nm	065° 3.5 nm	064° 4.4 nm	115° 3.9 nm
<b>J</b>	157° 3.4 nm	174° 4.0 nm	191° 3.2 nm	201° 3.0 nm	207° 2.6 nm	230° 2.5 nm	245° 2.1 nm	258° 1.6 nm	273° 0.9 nm	<b>J</b>	057° 0.9 nm	056° 2.8 nm	057° 3.7 nm	120° 3.1 nm
<b>K</b>	171° 3.7 nm	185° 4.5 nm	201° 4.0 nm	210° 3.8 nm	215° 3.5 nm	232° 3.4 nm	243° 3.0 nm	251° 2.5 nm	255° 1.7 nm	237° 0.9 nm	<b>K</b>	056° 1.9 nm	057° 2.8 nm	137° 2.8 nm
<b>M</b>	192° 4.8 nm	199° 5.9 nm	212° 5.6 nm	218° 5.5 nm	222° 5.3 nm	233° 5.3 nm	240° 4.9 nm	245° 4.3 nm	245° 3.5 nm	236° 2.8 nm	236° 1.9 nm	<b>M</b>	058° 0.9 nm	173° 3.2 nm
<b>N</b>	198° 5.4 nm	204° 6.6 nm	216° 6.4 nm	221° 6.4 nm	224° 6.1 nm	234° 6.2 nm	240° 5.8 nm	243° 5.2 nm	244° 4.4 nm	237° 3.7 nm	237° 2.8 nm	238° 0.9 nm	<b>N</b>	186° 3.6 nm
<b>O</b>	222° 2.0 nm	223° 3.3 nm	245° 3.7 nm	252° 4.0 nm	259° 4.0 nm	270° 4.6 nm	279° 4.7 nm	287° 4.5 nm	295° 3.9 nm	300° 3.1 nm	317° 2.8 nm	353° 3.2 nm	006° 3.6 nm	<b>O</b>

Bearings and distances are approximate.

**This table is for reference only and is not to be relied on for navigation!**

It is the responsibility of every competitor to be aware of the COLREGS.