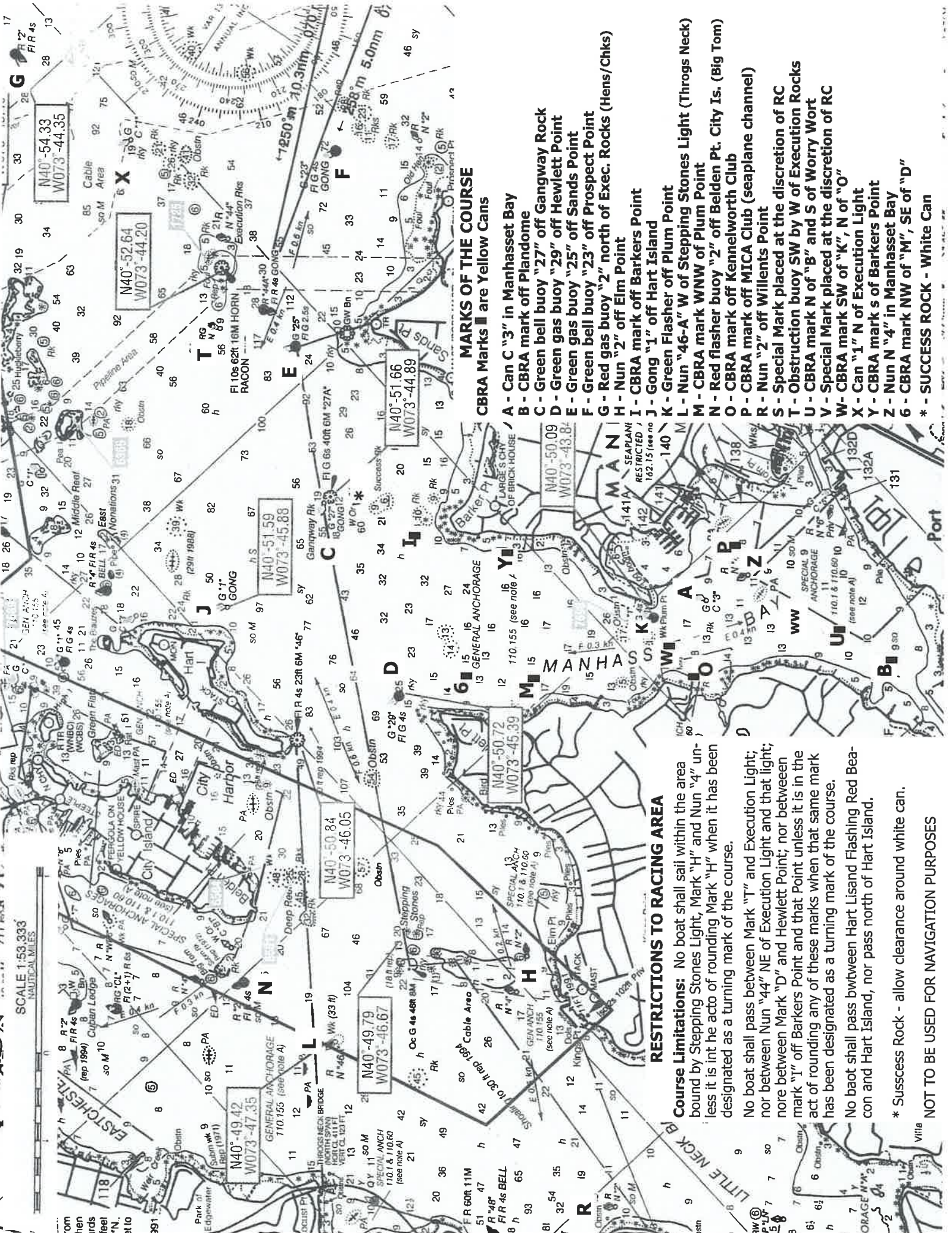


**The Manhasset Bay Challenge Cup
September 10, 2022
NOR Amendment 3**

Paragraph 8 has been amended to read:

8. Courses and Racing Area

The courses shall be set in accordance with Article IX of the DOT. The racing area will be Manhasset Bay and Western Long Island Sound, west of Execution Rocks. Please see attached chart for mark designations



SCALE 1:53,333
NAUTICAL MILES

MARKS OF THE COURSE

CBRA Marks ■ are Yellow Cans

- A - Can C "3" in Manhasset Bay
- B - CBRA mark off Plandome
- C - Green bell buoy "27" off Gangway Rock
- D - Green gas buoy "29" off Hewlett Point
- E - Green gas buoy "25" off Sands Point
- F - Green bell buoy "23" off Prospect Point
- G - Red gas buoy "2" north of Exec. Rocks (Hens/Chks)
- H - Nun "2" off Elm Point
- I - CBRA mark off Barkers Point
- J - Gong "1" off Hart Island
- K - Green Flasher off Plum Point
- L - Nun "46-A" W of Stepping Stones Light (Throgs Neck)
- M - CBRA mark WNW of Plum Point
- N - Red flasher buoy "2" off Belden Pt. City Is. (Big Tom)
- O - CBRA mark off Kennelworth Club
- P - CBRA mark off MICA Club (seaplane channel)
- R - Nun "2" off Willents Point
- S - Special Mark placed at the discretion of RC
- T - Obstruction buoy SW by W of Execution Rocks
- U - CBRA mark N of "B" and S of Worry Wort
- V - Special Mark placed at the discretion of RC
- W - CBRA mark SW of "K", N of "O"
- X - Can "1" N of Execution Light
- Y - CBRA mark s of Barkers Point
- Z - Nun N "4" in Manhasset Bay
- 6 - CBRA mark NW of "M", SE of "D"
- * - SUCCESS ROCK - White Can

RESTRICTIONS TO RACING AREA

Course Limitations: No boat shall sail within the area bound by Stepping Stones Light, Mark "H" and Nun "4" unless it is in the act of rounding Mark "H" when it has been designated as a turning mark of the course.

No boat shall pass between Mark "T" and Execution Light; nor between Nun "44" NE of Execution Light and that light; nor between Mark "D" and Hewlett Point; nor between mark "I" off Barkers Point and that Point unless it is in the act of rounding any of these marks when that same mark has been designated as a turning mark of the course.

No boat shall pass between Hart Island Flashing Red Beacon and Hart Island, nor pass north of Hart Island.

* Success Rock - allow clearance around white can.

NOT TO BE USED FOR NAVIGATION PURPOSES