



## Manhasset Bay Challenge Cup September 10, 2022 SAILING INSTRUCTIONS

1. Rules – The regatta will be governed by the rules as defined in the current Racing Rules of Sailing (RRS), the applicable Class Rules and the Notice of Race (the “NOR”) which includes a copy of the Declaration of Trust (the “DOT”).
2. Racing- Racing will be in Ideal 18s and will be governed by the rules as defined in the current Racing Rules of Sailing (RRS), including the Ideal 18 class rules except that the same number of crew must sail each race, which changes Ideal 18 Class rule 13.4. RRS 63.7 will be replaced with: “if there is any conflict between the SI and the NOR, the SI will apply”. RRS 61 is amended to add the following: A boat is required to inform the Race Committee finish boat immediately after finishing each race of its intention to protest another boat and provide the sail number of the protested boat. Each boat must check in at the Committee boat before the start of the first race
3. Notices to Competitors – Any changes to the Sailing Instructions (SIs) will be posted on the Regatta Official Notice Board in the clubhouse at Manhasset Bay YC and on yachtscoreing.
4. Schedule –A series shall be not less than three nor more than five races as determined by the Race Committee. The Skippers Meeting shall take place at 0900 on September 10, 2022 followed by a Harbor Start at 0930 and a First Warning at 1030. No warning signal will be made after 1700 on September 10, 2022. If conditions do not permit the completion of at least three races on September 10, 2022, racing may continue September 11, 2022 with a Harbor Start at 0930 and a first warning at 1030.
5. Racing Area – The racing area will be Manhasset Bay and western Long Island Sound, west of Execution Rocks.
6. Course –The courses will be set in accordance with Article IX of the DOT with all marks rounded to port and shall be signaled by VHF Radio or otherwise designated by Race Committee in accordance with RRS 27.1 before the warning signal. As stated in Article IX of the DOT, courses shall be not less than four or more than eight miles in length and there shall be a minimum of three legs and a maximum of six legs
7. Marks – Marks will be orange tetrahedrons. Alternatively, colored “hippity-hops” or Cow Bay Racing marks shown on the attached chart may be used.
8. Start & Finish Lines – The start and finish lines will be between an orange flag on the Race Committee Signal boat and a nearby mark on the port side of the RC Signal boat.
9. Starting Sequence – The following starting audible starting sequence will be used:

Attention		5 short sounds
Warning	5 minutes	1 long sound
Preparatory	4 minutes	1 long sound

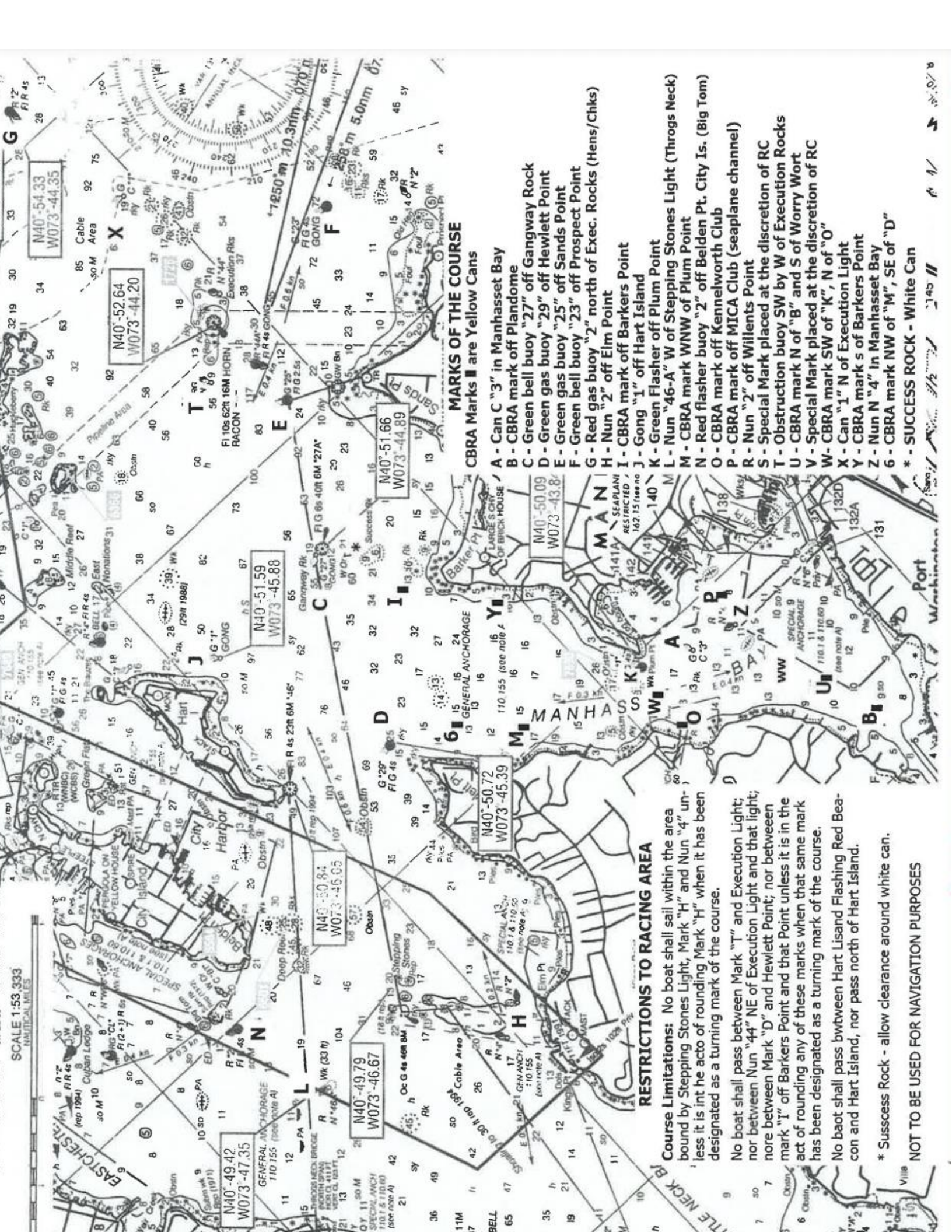
	1 minute	1 long sound
Start	0 seconds	1 long sound

Boats not starting within 4 minutes of the starting signal will be scored DNS.

10. Time Limit – The time limit for each race is 90 minutes. Any boat that does not finish within the time limit shall be scored DNF.
11. Protests – Protests shall be written and filed at the front desk of Manhasset Bay YC. The Protest time limit shall be one hour after Race Committee arrives at MBYC and shall be posted on the Notice Board in the Clubhouse.
12. Scoring – A boat’s series score will be the total of her race scores (no scores excluded).
13. Any protest on the water may be exonerated by 720 degree circle.
14. Any Change of Course will be signified by a “C” flag with multiple horn blasts and a compass heading and the relative distance from the previous mark to the new mark displayed on a white board.
15. Any boat hitting the “barging buoy” shall round either end of the starting line to non-course side, exonerate itself by completing a 720 degree circle and then start.
16. Responsibility for Safety – No competitor shall use alcoholic beverages at any time while on the water. As a condition of participation of any boat or participant in any race or related activity sponsored or undertaken by the Manhasset Bay Yacht Club: the helmsman of each boat agrees that the safety of the boat and the crew and the decision whether or not to start or to continue racing is solely their responsibility, and each of them waives all claims which he or she or any heir or representative, successor or assignee, may have against the Manhasset Bay Yacht Club, and its officers, trustees, committees, members, employees or agents, arising out of or in any way connected with participation in such race or activity. Responsibility for evaluating the wind, sea and weather conditions rests with each participant as does the responsibility for the safe condition of the boat and crew including safety equipment, rigging and wearing of personal buoyancy. Assistance from the Race Committee, patrol boats or other support boats and from personnel manning them is at the risk of the participant.

Challenge Cup PRO: Paul Nardone, Jr.

Event and Regatta Co-Chairs: Rita and Vince Syracuse



SCALE 1:53,333  
NAUTICAL MILES

G  
28  
13

N40-54.33  
W073-44.35

N40-52.64  
W073-44.20

N40-51.66  
W073-44.89

N40-50.99  
W073-43.87

N40-50.72  
W073-45.39

N40-50.94  
W073-45.05

N40-49.79  
W073-46.67

N40-49.42  
W073-47.35

N40-49.42  
W073-47.35

N40-49.42  
W073-47.35

**MARKS OF THE COURSE**  
CBRA Marks are Yellow Cans

- A - Can "3" in Manhasset Bay
- B - CBRA mark off Plandome
- C - Green bell buoy "27" off Gangway Rock
- D - Green gas buoy "29" off Hewlett Point
- E - Green gas buoy "25" off Sands Point
- F - Green bell buoy "23" off Prospect Point
- G - Red gas buoy "2" north of Exec. Rocks (Hens/Chks)
- H - Nun "2" off Elm Point
- I - CBRA mark off Barkers Point
- J - Gong "1" off Hart Island
- K - Green Flasher off Plum Point
- L - Nun "46-A" W of Stepping Stones Light (Throgs Neck)
- M - CBRA mark WNW of Plum Point
- N - Red flasher buoy "2" off Belden Pt. City Is. (Big Tom)
- O - CBRA mark off Kennelworth Club
- P - CBRA mark off MICA Club (seaplane channel)
- R - Nun "2" off Willents Point
- S - Special Mark placed at the discretion of RC
- T - Obstruction buoy SW by W of Execution Rocks
- U - CBRA mark N of "B" and S of Worry Wort
- V - Special Mark placed at the discretion of RC
- W - CBRA mark SW of "K", N of "O"
- X - Can "1" N of Execution Light
- Y - CBRA mark S of Barkers Point
- Z - Nun N "4" in Manhasset Bay
- 6 - CBRA mark NW of "M", SE of "D"
- \* - SUCCESS ROCK - White Can

**RESTRICTIONS TO RACING AREA**

**Course Limitations:** No boat shall sail within the area bound by Stepping Stones Light, Mark "H" and Nun "4" unless it is in the act of rounding Mark "H" when it has been designated as a turning mark of the course.

No boat shall pass between Mark "T" and Execution Light; nor between Nun "44" NE of Execution Light and that light; nor between Mark "D" and Hewlett Point; nor between mark "I" off Barkers Point and that Point unless it is in the act of rounding any of these marks when that same mark has been designated as a turning mark of the course.

No boat shall pass between Hart Island Flashing Red Beacon and Hart Island, nor pass north of Hart Island.

\* Success Rock - allow clearance around white can.

NOT TO BE USED FOR NAVIGATION PURPOSES