



**Verve Inshore Regatta &
J/70 Great Lakes Championship
Chicago Yacht Club
August 26 – 28, 2022
Belmont Station, Chicago, IL**

Sailing Instructions (SIs)

*The Chicago Yacht Club Regatta Association is the Organizing Authority.
Chicago Yacht Club is the host.*

ABBREVIATIONS

[NP] Rules that are not grounds for a protest or request for redress by a boat. ***This changes RRS 60.1(a).***

1 RULES

- 1.1 The event is governed by the *rules* as defined in *The Racing Rules of Sailing*.
- 1.2 Appendices T and V1 shall apply.
- 1.3 **[NP]** Based on any public health consideration, competitors agree to follow Centers for Disease Control and Prevention (CDC), State of Illinois and City of Chicago, and the Chicago Yacht Club's policies regarding coronavirus, COVID-19, that are in effect at the time of the event.
- 1.4 Crew substitutions or changes shall be recorded online prior to the start of racing.
- 1.5 **[DP]** Boats shall not fly drones while racing or in the racing area.
- 1.6 The rules of the International Etchells Class, International J/70 Class, J/88 Class Association Rules, and the Shields Class shall apply for their respective entries.

2 CHANGES TO SAILING INSTRUCTIONS

Any change to the sailing instructions will be posted:

- 1. Before 0900 on the day it will take effect or,
- 2. In the event of AP posted ashore, no later than 15 minutes before AP is lowered ashore or,
- 3. By 2000 on the day before a schedule change will take effect.

3 COMMUNICATIONS WITH COMPETITORS

- 3.1 Notices to competitors will be posted on the official notice board online at <https://yachtscoring.com/emenue.cfm?eID=15388>.
- 3.2 On the water, the Race Committee intends to monitor and communicate with competitors via VHF radio. See Addendum B for channel(s).
- 3.3 **[NP]** While racing, except in an emergency, a boat shall not make voice or data transmissions and shall not receive voice or data communication that is not available to all boats.
- 3.4 **[NP]** Errors and omissions in courtesy broadcasts are not grounds for a request for redress. ***This changes RRS 62.1(a).***

4 CODE OF CONDUCT

[NP] Competitors and support persons shall comply with reasonable requests from race officials.



5 SIGNALS MADE ASHORE

- 5.1 Signals made ashore will be displayed from the main flagpole at the northeast of the Belmont Station Barge. In addition, signals made ashore will be distributed, as a courtesy, to the email or text address listed in a boat's entry form. Failure to receive courtesy electronic communications shall not be grounds for a request for redress. ***This changes RRS 62.1(a).***
- 5.2 When flag AP is displayed ashore, '1 minute' is replaced with 'not less than 60 minutes' in Race Signals AP.

6 SCHEDULE OF RACES

Thursday, August 25, 2022

1700 – 1900 Registration for all Classes

Friday, August 26, 2022

0730-0830 J/70 Class Registration

0830 J/70 Class Competitors Meeting

1025 J/70 Class First Warning

1730-1830 Sat/Sun Classes Registration

Saturday, August 27, 2022

0730 – 0830 Sat/Sun Classes Registration

1025 First Warning

Sunday, August 28, 2022

1025 First Warning

1400 No warning after this time

After Racing Awards presentation

7 CLASS FLAGS & RACING AREA

See Addendum B for Class Flags, Initial Starting Sequences, and Racing Areas.

8 COURSES

- 8.1 The diagram(s) in SI Addendum A including the approximate angles between legs, the order in which marks are to be passed, and the side on which each mark is to be left.
- 8.2 No later than the warning signal, the Race Committee signal vessel will display the course, which marks each fleet will use (Long/Long - LL, Short/Short - SS, or Long/Short – LS, M, or B), and approximate compass bearing of the first leg.

9 MARKS

- 9.1 The starting mark will be described in Addendum A for each circle.
- 9.2 Rounding marks will be orange inflatable shapes or orange robotic marks.
- 9.3 Routine movement of robotic marks will not be grounds for redress. This includes marks returning to station after having been pushed away by a boat or competitor and collisions with marks that do not cause damage. RRS 31 still applies.
- 9.4 Finishing mark may be an orange or white inflatable shape per the course diagrams in Addendum A.
- 9.5 Change marks will be yellow inflatable shapes and offsets may not be set on a change of course.
- 9.6 For courses LL, SS, or LS, Mark 1 will have an offset. In the event that the offset is not in place, the single windward Mark 1 shall be left to port.
- 9.7 For courses LL, SS, or LS, Mark 2 will be a gate. In the event that the gate is not in place, the single leeward Mark 2 shall be left to port.
- 9.8 When the Short Mark 1 and Long Mark 1 are the same distance, only one mark will be set and will be referred to as the Long Mark 1.



10 OBSTRUCTIONS

The following area(s) are designated as an obstruction:

- a) The area around the pumping stations (cribs) and the fixed marks placed around them by the US Coast Guard. Boats shall not sail between the fixed marks.

11 THE START

- 11.1 Rules 11.3 – 11.10 shall apply to the J/70 & J88 classes only.
- 11.2 Rules 11.11 – 11.19 shall apply to all classes EXCEPT the J/70 & J/88 classes.

Blue Circle – J/70 & J/88 Classes

- 11.3 Races will be started using RRS 26 with the warning signal made 5 minutes before the starting signal.
- 11.4 The starting line is between a staff displaying an orange flag on the signal vessel at the starboard end and the course side of the port-end starting mark or an orange flag on an anchored pin boat.
- 11.5 **[NP]** Boats whose warning signal has not been made shall avoid the starting area during the starting sequence for other races.
- 11.6 If any part of a boat's hull is on the course side of the starting line at her starting signal and she is identified, the Race Committee will attempt to hail her sail number. Failure to hail her number, failure of her to hear such a hail, or the order in which boats are hailed will not be grounds for a redress for request. ***This changes RRS 62.1(a).***
- 11.7 A boat that does not start within four minutes after her starting signal will be scored Did Not Start (DNS) without a hearing. ***This changes RRS A5.1 and A5.2.***
- 11.8 The Race Committee may combine classes for a start by displaying both class flags at the warning.
- 11.9 The Race Committee may modify the starting sequence after the first race on Saturday, August 27, 2022 for any subsequent races.
- 11.10 Change of First Mark at the Start - When signal flag C is displayed on the signal boat at or before the warning signal with repeated sounds, Mark 1 will be a new mark as defined in instruction 12 and revised bearing and distances will be displayed. Code Flag C will remain displayed through the starting sequence. If there is a subsequent change and the new mark is replaced, it will be replaced by an original mark. ***This changes RRS 27.1 and 33.***

Red Circle – All boats EXCEPT J/70 & J/88

- 11.11 Races will be started using Appendix U, Sound-Signal Starting System.
- 11.12 **[NP]** As a courtesy, Race Committee may display the class flag during the start sequence of the class
- 11.12 The starting line is between a staff displaying an orange flag on the signal vessel at the starboard end and the course side of the port-end starting mark.
- 11.13 **[NP]** Boats whose warning signal has not been made shall avoid the starting area during the starting sequence for other races.
- 11.14 If any part of a boat's hull is on the course side of the starting line at her starting signal and she is identified, the Race Committee will attempt to hail her sail number. Failure to hail her number, failure of her to hear such a hail, or the order in which boats are hailed will not be grounds for a redress for request. ***This changes RRS 62.1(a).***
- 11.15 A boat that does not start within four minutes after her starting signal will be scored Did Not Start (DNS) without a hearing. ***This changes RRS A5.1 and A5.2.***
- 11.16 The Race Committee may combine classes for a start following procedures in 11.18 to change the start sequence.
- 11.17 The Race Committee may modify the starting sequence after the first race on Saturday, August 27, 2022 for any subsequent races.
- 11.18 Any changes in the starting order from Addendum B will be announced on the VHF Channel 78 or by loud hailer to the fleet after raising Code Flag L with one sound.



- 11.19 Change of First Mark at the Start - When signal flag C is displayed on the signal boat at or before the warning signal with repeated sounds, Mark 1 will be a new mark as defined in instruction 12 and revised bearing and distances will be displayed. Code Flag C will remain displayed through the starting sequence. If there is a subsequent change and the new mark is replaced, it will be replaced by an original mark. ***This changes RRS 27.1 and 33.***

12 CHANGE OF THE NEXT LEG OF THE COURSE

- 12.1 Rules 12.3 – 12.5 shall apply to the J/70 & J88 classes only.
12.2 Rules 12.6 – 12.7 shall apply to all classes EXCEPT the J/70 & J/88 classes.

Blue Circle – J/70 & J/88 Classes

- 12.3 To change the next leg of the course, the Race Committee will lay a new mark (or move the finishing line) and remove the original mark as soon as practicable. When a subsequent change is signalled, it will be replaced by an original mark.
12.4 A course change of 5 degrees or less will not be signalled by the Race Committee. The course change will continue to use the active mark. ***This changes RRS 33(a).***
12.5 Offset marks, if used as provided in instruction 9.6, may not be set on a changed leg of the course.

Red Circle – All boats EXCEPT J/70 & J/88

- 12.6 To change the next leg of the course, the Race Committee will lay a new mark (or move the finishing line) and remove the original mark as soon as practicable. When a subsequent change is signalled, it will be replaced by an original mark.
12.7 A course change of 10 degrees or less will not be signalled by the Race Committee. The course change will continue to use the active mark. ***This changes RRS 33(a).***

13 THE FINISH

- 13.1 The finishing line is between a staff displaying a blue flag on the signal vessel and the course side of the finishing mark per the course diagrams in Addendum A.
13.2 Flag A displayed, with no sound signal, while boats are finishing means “No more racing today.”

14 PENALTY SYSTEM

- 14.1 Appendices T and V1 shall apply.

15 TIME LIMITS

- 15.1 The Mark 1 Time Limit, Race Time Limit (see RRS 35), and the Finishing Window are shown in the table below in minutes.

Mark 1 Time Limit	Race Time Limit	Finishing Window
30 min	120 min	30 min

- 15.2 If no boat has passed the first mark within the Mark 1 Time Limit, the race will be abandoned.
15.3 The Finishing Window is the time for boats to finish after the first boat in her class sails the course and finishes. Boats failing to finish within the Finishing Window, and not subsequently retiring, penalized or given redress, will be scored Time Limit Expired (TLE) without a hearing. A boat scored TLE shall be scored points for the finishing place one more than the points scored by the last boat that finished within the Finishing Window. ***This changes RRS 35, A5.1, A5.2 and A10.***



16 HEARING REQUESTS

- 16.1 Protests and requests for redress shall be filed in person at the protest desk at Chicago Yacht Club Belmont Station within the appropriate time limit.
- 16.2 Alternatively, hearing requests can be filed online in the Owner's Corner of YachtScoring within the appropriate time limit.
- 16.3 A boat's protest time limit is 60 minutes from the docking time of the Signal Boat for her circle.
- 16.4 Hearings will be held in person at CYC Belmont Station immediately following racing.

17 SCORING

- 17.1 The scoring system is as follows: Low Point Scoring.
- 17.2 2 races are required to be completed to constitute a regatta.
- 17.3 A boat's total score will be the sum of her scores for all races. No score will be discarded. ***This changes RRS A2.***
- 17.6 Scoring inquiries shall be filed at the protest desk located at Belmont Station.

18 SAFETY REGULATIONS

- 18.1 **[NP][DP]** Each boat shall check in by sailing past the Race Committee signal boat, hailing or displaying her sail number, and receiving an acknowledgement from the race committee prior to her first race on each day of racing.
- 18.2 **[NP] [DP]** A boat that retires from a race shall notify the Race Committee either before leaving the course or, if that is impracticable, immediately after arriving ashore. A boat may notify the race committee using the designated VHF hailing channel.

19 SUPPLIED BOATS

- 19.1 Breakdowns for Chicago Yacht Club owned Tom 28s and Sonars are grounds for a request for redress.
- 19.2 The standing rigging on CYC owned boats shall not be adjusted during the regatta.
- 19.3 The hull sides and below the waterline of CYC owned boats shall not be cleaned before or during the regatta.

20 HAUL-OUT RESTRICTIONS

- [NP]** Keelboats shall not be hauled out during the event except with and according to the terms of prior written permission of the race committee.

21 RISK STATEMENT

Competitors participate in the regatta entirely at their own risk. See RRS 3, Decision to Race. The organizing authority will not accept any liability for material damage, personal injury, or death sustained in conjunction with or prior to, during, or after the regatta.

22 INSURANCE

Each participating boat shall be insured with a valid third-party liability insurance with a minimum cover of \$500,000 per incident or the equivalent. Competitors shall be prepared to supply proof of insurance upon request by the OA.

23 PRIZES

Prizes will be awarded in accordance with the NOR.

24 FURTHER INFORMATION

Chuck Nevel - Regatta Manager
Chicago Yacht Club 400 E Monroe St, Chicago, IL 60603
312-861-7777, Ext. 5562 (o) 312-617-2279 (m)
chuck.nevel@chicagoyachtclub.org

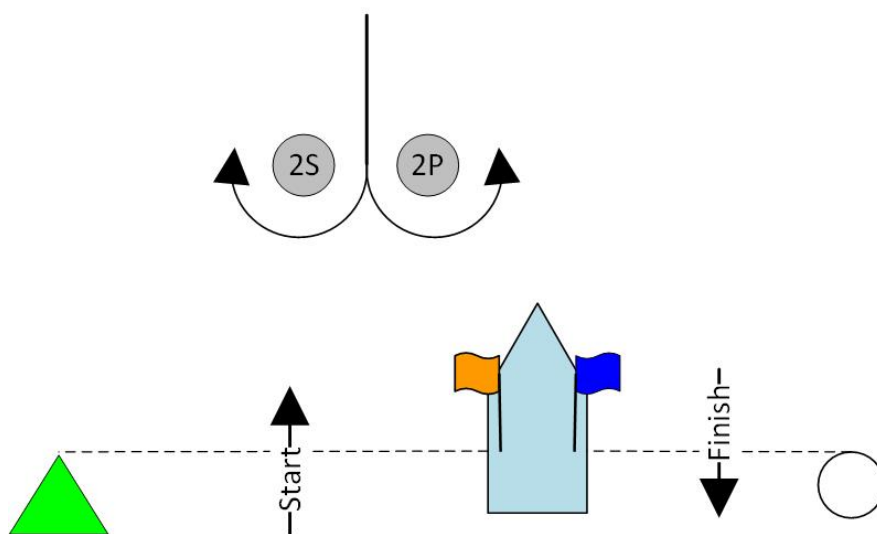
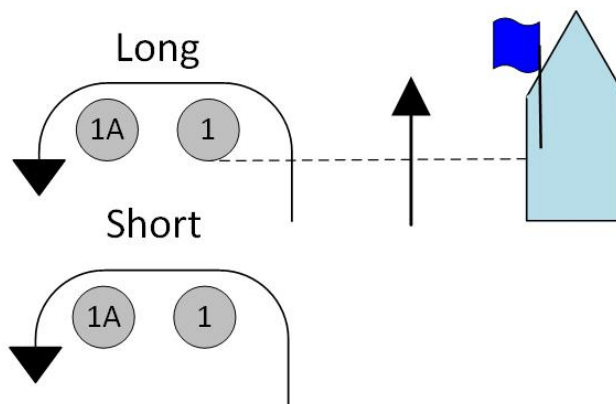


Addendum A Course Diagrams

Course Assignment	4 Legs	5 Legs
LL (Long, Long)	Start - Long Mark 1 - Mark 2 - Long Mark 1 - Finish	Start - Long Mark 1 - Mark 2 - Long Mark 1 - Mark 2 - Finish
LS (Long, Short)	Start - Long Mark 1 - Mark 2 - Short Mark 1 - Finish	Start - Long Mark 1 - Mark 2 - Short Mark 1 - Mark 2 - Finish
SS (Short, Short)	Start - Short Mark 1 - Mark 2 - Short Mark 1 - Finish	Start - Short Mark 1 - Mark 2 - Short Mark 1 - Mark 2 - Finish

Marks 1, 1A, and 2S/P, and Finish may be different shapes or colors than shown.

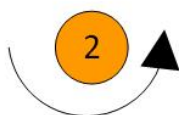
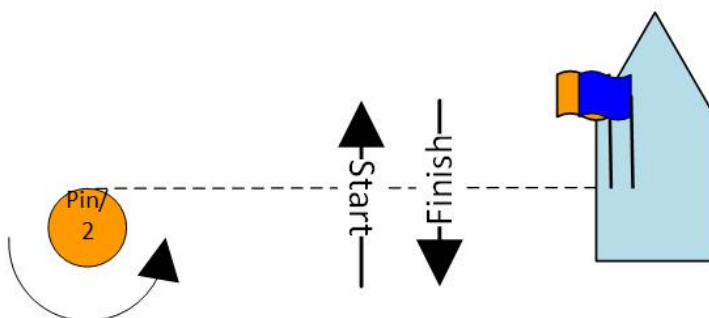
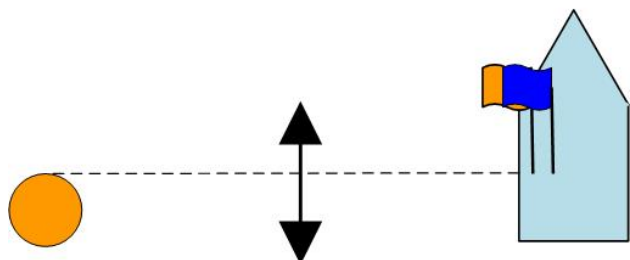
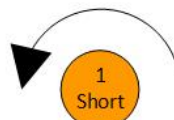
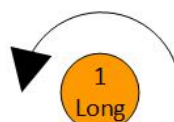
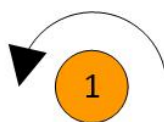
See Addendum B





Course M – Windward/Leeward	
Signal	Mark Rounding Order
M4	Start - 1 - 2 - 1 - Finish
M5	Start - 1 - 2 - 1 - 2 - Finish
M6	Start - 1 - 2 - 1 - 2 - 1 - Finish

Course B – Windward/Leeward	
Signal	Mark Rounding Order
B4	Start - 1 - 2 - 1 - Finish
B6	Start - 1 - 2 - 1 - 2 - 1 - Finish





Addendum B

Class Flags, Initial Starting Sequences, VHF Channels, and Racing Areas

Red Circle

Courtesy Broadcasts: VHF Channel 78

Approximately 1.2 nm at 60° from the Belmont Buoy

Approximate Coordinates – 41° 57.2'N 087° 36.4'W

**Orange primary marks and green start mark. Primary and start marks may be robotic or inflatable marks.
Yellow change marks.**

<u>Class</u>	<u>Flag</u>
Etchells	Class Insignia
Tom 28	Code Flag T (Tango)
Shields	Class Insignia
Colgate 26	Code Flag 6 (Six)
Sonar	Class Insignia
Melges 15	Code Flag 5 (Five)

Blue Circle

Courtesy Broadcasts: VHF Channel 73

Approximately 3.3 nm at 100° from the Belmont Buoy

Approximate Coordinates - 41° 56.7'N 087° 33.7'W

**Orange primary marks.
Yellow for change mark, pin boat or green start mark, and white finish pin.
Marks will be inflatable shapes.**

<u>Class</u>	<u>Flag</u>
J/70	Class Insignia
J/88	Code Flag J (Juliett)

