

2022 Classic Wooden Boat Race

Sunday, 11 September 2022
Annapolis, MD

Organizing Authority: Eastport Yacht Club

Sailing Instructions

The notation '[NP]' in a rule means that a boat may not protest another boat for breaking that rule. This changes RRS 60.1(a).

1 RULES

- 1.1. The event is governed by the rules as defined in *The Racing Rules of Sailing* (RRS).
- 1.2. A spinnaker, or any other sail(s) (e.g., mizzen staysails, gollywobblers, gaff topsails and fisherman staysails), is permitted if the boat's design originally included one or they are now used in your class.

2 CHANGES TO SAILING INSTRUCTIONS

- 2.1. Any change to the sailing instructions will be posted before 0800 on the day it will take effect, except that any change to the schedule of races will be posted by 2000 on the day before it will take effect.

3 COMMUNICATIONS WITH COMPETITORS

- 3.1. On the water, Race Committee (RC) intends to monitor and communicate with competitors on VHF radio channel 73.

4 CODE OF CONDUCT

- 4.1 [DP] Competitors and support persons shall comply with reasonable requests from race officials.

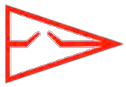
5 SIGNALS MADE ASHORE

- 5.1. Signals made ashore before the race start shall be displayed from the Eastport Yacht Club (EYC) flagpole, located on the waterside of the clubhouse.
- 5.2. RC may announce signals posted ashore on VHF channel 73, and/or text message, and/or email. This announcement, lack thereof, or contents thereof shall not be grounds for redress or protest. This changes RRS 41 and 62.1(a).
- 5.3. When flag AP is displayed ashore, "1 minute" is replaced with "not less than 60 minutes" in Race Signals AP.

6 CHECK IN

- 6.1. Boats shall not attempt to check-in with the RC Signal Vessel.





Classic Wooden Boat Race
Sailing Instructions

7 COURSES

- 7.1. RC shall designate the course to be sailed no later than 1700 on Saturday, 10 September 2022. The course and corresponding start times will be posted on the Official Notice Board.
- 7.2. [DP] Once properly started, boats shall not sail through the starting line, in either direction, when RC is displaying an orange flag. For boats that have already started, the starting line shall be considered an obstruction. This changes RRS 28.1.
- 7.3. [DP] Except on the leg to the finish, boats shall not sail through the finish line, in either direction, when RC is displaying a blue flag. This changes RRS 28.1.

8 MARKS

- 8.1. The marks that may be used and their approximate locations are shown in Figure 1.

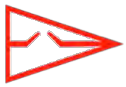
9 THE START

- 9.1. This shall be a pursuit race with a reverse Time over Distance (ToD) starting order. The boat with the slowest rating shall start first and the fastest rating shall start last.
- 9.2. The RC shall signal the starting sequence as follows (this changes RRS 26):

Time	Signal	Flag / Sound
1100	Warning signal for all boats	Raise large EYC burgee with 1 sound
1101	Preparatory signal for the first boat to start	Raise flag "P" with 1 sound
1104		Lower flag "P" with a long sound
1105	Starting signal for the first boat to start	Lower large EYC burgee & briefly raise pennant "0" with 1 sound
Each subsequent start time	Starting signal for remaining boats	Briefly raise pennant "0" with 1 sound

- 9.3. A boat's individual preparatory signal is four (4) minutes prior to her individual scheduled start. (At four (4) minutes before each boat's start, she must turn off her motor or have her crew stop paddling.) There will be no visual signal or sound for any subsequent preparatory signal after the first boat has started. This changes RRS 26.
- 9.4. Each boat's start time shall be based on her Classic Wooden Sailboat ToD rating. The race shall use GPS time synchronization. RC will attempt to broadcast a five (5) second countdown for each starting time on VHF channel 73. Failure of RC to announce a start time will not be grounds for redress. This changes RRS 41 and 62.1(a).
- 9.5. The starting line shall be between a staff displaying an orange flag on the RC Signal Vessel and Severn River G "9" Q G.
- 9.6. [DP] After the Warning signal for the first start, boats shall stay clear of the starting area until four (4) minutes before their scheduled starting time.
- 9.7. In the event a postponement is signaled on the water, RC shall announce the revised start times on VHF channel 73 before lowering pennant AP. Postponements will be extended in blocks of ten (10) minutes.





Classic Wooden Boat Race Sailing Instructions

10 RECALLS

- 10.1. If any part of a boat's hull is on the course side of the starting line at her starting signal and she is identified, she shall be considered On Course Side (OCS). She shall not attempt to clear herself, start, or restart, and shall, instead, sail to the first mark. RC will attempt to broadcast her sail number on VHF channel 73. Flag "X" will not be used. This changes RRS 29.1.
- 10.2. [DP] [NP] A boat scored OCS shall, without a hearing, be penalized by having ten (10) minutes added to her elapsed time. In RRS 28, the word "start" is replaced with "start or take a penalty in accordance with SI 9.2." This changes RRS 28, 63.1, A4, and A5.

11 THE FINISH

- 11.1. The finishing line shall be between a staff displaying a blue flag on the RC vessel and the course side of G "9" Q G.
- 11.2. The RC may shorten the course at any rounding mark in accordance with RRS 32.

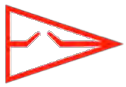
12 RACE TIME LIMIT

- 12.1. The time limit for the first boat to finish the race is 3.5 hours after the start of the first boat.
- 12.2. The finishing window is ninety (90) minutes after the first boat sails the course and finishes.
- 12.3. If a boat in a class has *sailed the course* within the race time limit, all other boats in that class will be scored. Those that finished within the finishing window will be scored in their finishing order. Those who have not finished within the finishing window will be scored Time Limit Expired (TLE). This changes RRS 35, A5.1, A5.2, and A10.

13 HEARING REQUESTS

- 13.1. Scoring Inquiries shall be submitted within the Protest Time Limit.
 - a. Scoring inquiries shall be submitted via the "Online Scoring Inquiry Filing" link found on the Yacht Scoring event main page.
 - b. Scoring inquiries may be resolved via teleconference or video conference.
- 13.2. Protests and Requests for Redress shall be submitted within the Protest Time Limit. Electronic submittal shall be used and is available via the "Owner's Corner" link found on the Yacht Scoring event main page or via email to race.committee@eastportyc.org. A diagram of the incident, if applicable, cannot be submitted via Yacht Scoring, and should be scanned and emailed to RC at race.committee@eastportyc.org prior to the hearing.
- 13.3. The Penalty Acknowledgement Form (RRS Appendix V2) will be available via the "Documents & Forms" link found on the Yacht Scoring event main page. The form may also be emailed to RC at race.committee@eastportyc.org.
- 13.4. The protest time limit is sixty (60), minutes after the RC Signal Vessel dock time. This posting constitutes the notification required in RRS 61.3. The time limit for a Request for Redress based on an incident in the racing area shall be the Protest Time Limit. This changes RRS 62.2.





Classic Wooden Boat Race Sailing Instructions

13.5. The Protest Committee may schedule a hearing prior to the Protest Time Limit if the parties and witnesses are available and have had time to prepare for the hearing. Protest and/or request for redress hearings will be virtual hearings. The parties to a virtual hearing are responsible for having their witnesses, if any, present at the beginning of the hearing. The time and location of each protest hearing will be posted on the Official Notice Board. Parties and witnesses are encouraged to download and review the Online Hearing Procedure Guidelines, available via the "Documents & Forms" link found on the Yacht Scoring event main page.

14 SCORING

- 14.1. Ratings will be in accordance with the Classic Wooden Sailboat ToD rating, and boats will be scored in the order of finish within each class.
- 14.2. If RC shortens the course, each boat's corrected time will be calculated based on the actual distance sailed, and the results will be in accordance with corrected times.
- 14.3. Boats to be scored TLE and not thereafter retiring, being penalized, or given redress will be scored points equal to the number of boats finishing within the race time limit plus two (2) points by the RC without a hearing. This changes RRS A5.2.

15 SAFETY REGULATIONS

- 15.1. If the wind is too strong for safe racing, RC will notify the competitors by 1030 on the day of the race and will attempt to contact any boats already on the water by hailing and/or using VHF channel 73.
- 15.2. [DP] [NP] A boat that retires from a race shall notify RC as soon as possible either by hail, on VHF channel 73, by phone via the EYC cell phone at (410) 271-7193, or via email at race.committee@eastportyc.org. A voicemail message shall include the approximate time of the message, the skipper's name, boat name, and sail number.
- 15.3. [DP] [NP] A boat shall not exercise right of way, cross in proximity to, or interfere with reasonable transit of the race area by commercial traffic of any kind. Boats must take evasive action well in advance of a potentially dangerous situation. The US Coast Guard, ship captains, and bay pilots have been encouraged to report any incident they observe.
- 15.4. [NP] A boat without way may use any means of propulsion to avoid underway commercial traffic, provided:
 - (a) the boat does not gain an advantage;
 - (b) using propulsion is the boat's only means of avoiding the commercial traffic; and,
 - (c) the boat submits a report (in writing or by email) to RC by the protest time limit that describes the incident and the boat's actions.
- 15.5. [NP] The RC or Protest Committee may protest a boat for SI 15.2 and/or 15.3 based on information received from any source. The protest time limit does not apply. This changes RRS 60.2, RRS 60.3, RRS 61.3, and 63.6(c).

16 TRASH DISPOSAL

[DP] This is a Clean Regatta; all competitors are strongly encouraged to use multi-use water bottles instead of disposable water bottles, and to recycle whenever possible.



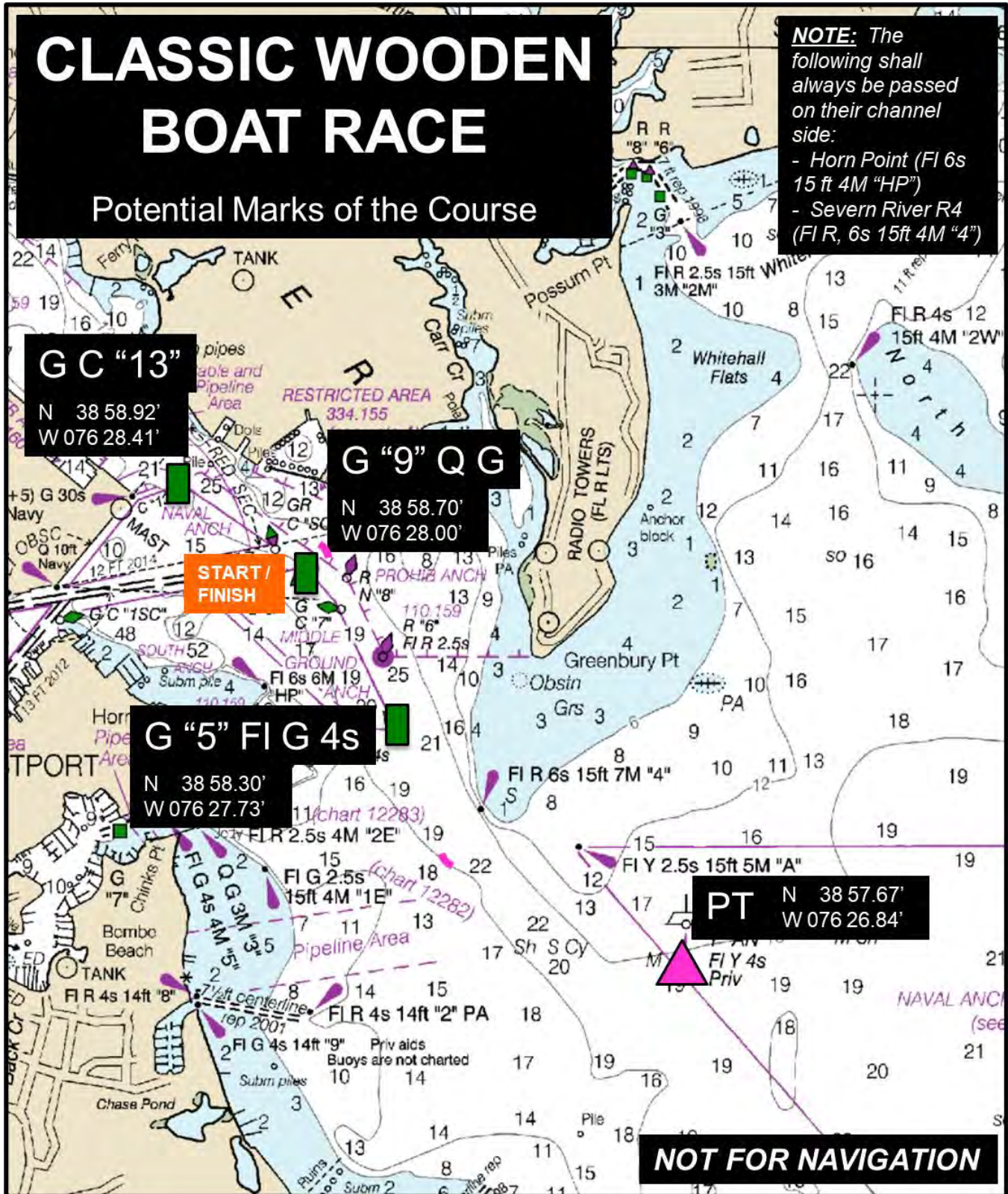
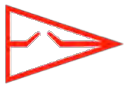


Figure 1. Classic Wooden Boat Race – Potential Race Marks and Locations