



# Biscayne Bay Yacht Club

2540 S. Bayshore Drive  
Coconut Grove, FL 33133

Tel. 305-858-6303 email; [bbyc@biscaynebayyachtclub.com](mailto:bbyc@biscaynebayyachtclub.com)

Website; [www.biscaynebayyachtclub.com](http://www.biscaynebayyachtclub.com)

**Etchells Skippers, Crew, and Guests:** The Commodore, Regatta Committee, and Members of the Biscayne Bay Yacht Club welcome you to the 2023 International Etchells Biscayne Bay Regatta Series. We are proud of our historic open air clubhouse and facilities and trust that you will enjoy the club and regattas.

**Location:** BBYC is located on the western waterfront area of Biscayne Bay next door to Coral Reef Yacht Club, and the US Sailing Center to the north and Shake-A-Leg Miami facility to the south. The club is within easy walking distance to grocery stores, restaurants, and several hotels along Bayshore Drive and in the Coconut Grove village.



**Club parking:** The club has a secure gated entrance off Bayshore Drive with blacktop parking for members and limited parking for guests. During the Etchells events, registered Etchells teams with boats stored at BBYC will be allotted one offsite parking pass per day. The offsite parking facility is a short walking distance to BBYC. Overnight parking at the yacht club is prohibited.

**Club hours and facilities:** BBYC is open to members and guests Tuesday through Sunday (closed Mondays).



The club bar is open Tuesday thru Sunday from 11 am to closing around 8 pm as customers permit. The galley serves lunch Tuesday through Sunday from 11:30 am to 2:00 pm, and serves a "Pub Night" buffet dinner on the covered outdoor patio on Friday evenings.

Portable rest rooms and showers will be set up for competitors in the blacktop area adjacent to the boat storage & shed area. A ladies bathroom is located off the front entrance patio.

**Boat launching and trailer storage:** The club launching facilities consist of the main 3 ton hoist capable of launching Etchells, a smaller 1.5 ton hoist, as well as a ramp for launching smaller boats. Etchells and trailers will be stored on the blacktop area near the hoists as well as in marked spaces along the shed drive area and in the rear lot. The club will provide tractors during launching and haul out times to move boats from the back storage area as needed.

Once launched, boats should not remain in the boat launch area. There will be a BBYC waterfront beach master during launching and haul out times to direct boat and trailer movement.

Please give him your full cooperation as the hoist area will be crowded.



**Temporary Guest Member Charging Privileges:** The Club bar and food service facilities are available to all registered guest skippers and crewmembers. Temporary BBYC Guest Memberships will be granted only to owners and skippers and only upon completion of (a) the Etchells Registration and Temporary Guest Membership Form and; (b) Billing Security Agreement. Billing Security Agreements will be available at registration in the BBYC Main Office where upon completion and to ensure payment, an imprint of the credit card imprint will be taken. **ALL INFORMATION WILL REMAIN CONFIDENTIAL.**

**Security:** Biscayne Bay Yacht Club does not accept any liability for vehicles, boats, or trailers on the premises, and as such, all guests should take appropriate action to best secure individual personal items. Yacht Club Rules prohibit overnight parking, camping and/or sleeping in vehicles on the club grounds. Club access through the main gate is a responsibility for all visiting guests, and the utmost care should be taken to prevent unauthorized access.

**Regatta and BBYC contacts:**

BBYC Regatta Chairman – Bruce Harper  
Regatta Chairman – Jeff Nehms  
BBYC Boat Storage – Ezra Culver  
Principal Race Officer – David Brennan  
Jury Chairman – Tom Rinda  
BBYC Club Manager – Neal Chandra

**Phone**

305-586-0112  
305-281-9519  
305-788-4510  
305-608-8206  
727-560-6365  
305-858-6303

**email**

[wbruceharpjr@hotmail.com](mailto:wbruceharpjr@hotmail.com)  
[racing@etchellsfleet20.org](mailto:racing@etchellsfleet20.org)  
[racing@etchellsfleet20.org](mailto:racing@etchellsfleet20.org)  
[david@redsailtd.com](mailto:david@redsailtd.com)  
[mercofl@aol.com](mailto:mercofl@aol.com)  
[gm@biscaynebayyachtclub.com](mailto:gm@biscaynebayyachtclub.com)

**Coconut Grove Bayshore**



## Coconut Grove Area Hotels Closest to Biscayne Bay Yacht Club:

### **Hampton Inn by Hilton Miami Coconut Grove**

2800 SW 28th Terr., Coconut Grove, FL 33133

(305) 448-2800

[www.hamptoninn3.hilton.com](http://www.hamptoninn3.hilton.com)

### **Mutiny Hotel**

2951 S Bayshore Dr., Coconut Grove, FL 33133

(305) 441-2100

[www.providentresorts.com/CoconutGrove](http://www.providentresorts.com/CoconutGrove)

### **Courtyard by Marriot – Coconut Grove**

2649 South Bayshore Drive, Coconut Grove, FL 33133

(305) 858-2500

[www.marriott.com/coconut-grove](http://www.marriott.com/coconut-grove)

### **Mr. C Miami – Coconut Grove**

2988 McFarlane Road, Coconut Grove, FL 33133

(305) 800-6672

[www.mrchotels.com/mrccoconutgrove](http://www.mrchotels.com/mrccoconutgrove)

### **Hotel Arya, BW Premier - Coconut Grove**

2889 McFarlane Rd., Coconut Grove, FL 33133

(800) 780-7234; (305) 529-2828 (hotel direct)

[www.bestwestern.com](http://www.bestwestern.com)

### **Mayfair Hotel & Spa**

3000 Florida Avenue, Coconut Grove, FL 33133

(800) 881-1523

[www.mayfairhotelandspa.com](http://www.mayfairhotelandspa.com)

\*\*Additional hotels and other accommodations can be found in the area by searching for Coconut Grove zip code 33133 hotels on various internet search engines (Kayak.com, Hotels.com, Priceline.com, etc.).

## Transportation:

**Air:** **Miami International (MIA)** is the closest airport about 15-20 minutes (6 miles) from BBYC.

**Ft. Lauderdale International (FLL)** is also in the area. It is about 45 minutes (30 miles) from Coconut Grove

**Land:** Uber, Lyft, Taxi and Metrorail services are all available in the area.

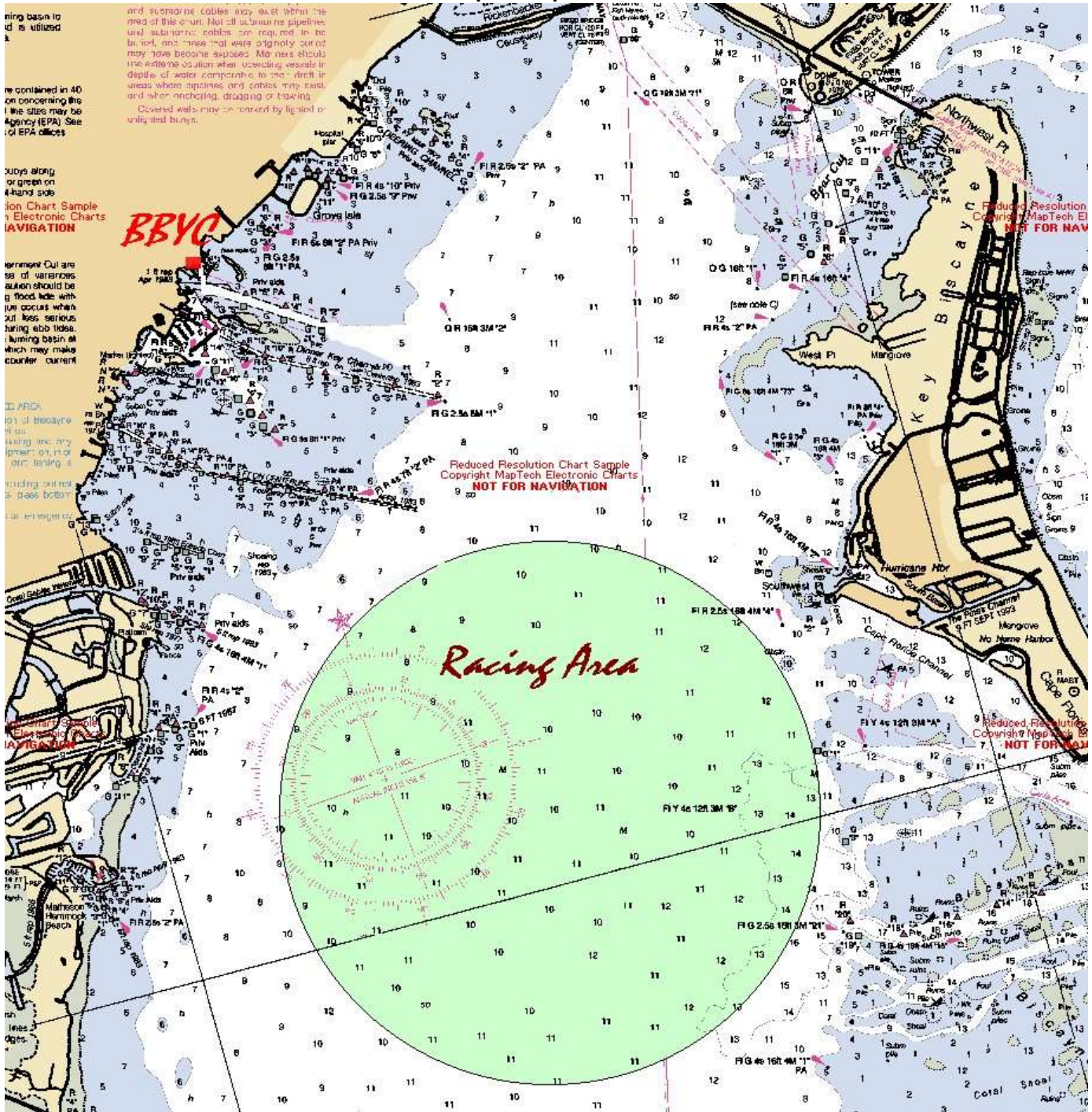
All major car rental services are available at the airports.

## Yacht Services:

<b>Sailmakers:</b>	Doyle Sails Miami	(305) 649-6001	Full service loft & canvas
	North Sails Miami	(305) 840-8403	Full service loft
	UK Sails Miami	(305) 567-1773	Full service loft
<b>Rigging:</b>	EZ Marine (located at BBYC)	(305) 788-4510	Rigging, fiberglass repair, and boat transportation services
	West Marine store	3635 S Dixie Hwy, Miami, FL 33133	
	Crook & Crook Marine store	2795 SW 27th Ave, Miami, FL 33133	

**Racing area:** The Etchells race course will be located in an area 1 to 3 nautical miles SSE of the entrance to the Dinner Key channel marker #1.

### Championship Race Area



ring basin to  
is utilized

and submarine cables may exist within the  
area of this chart. Not all submarine pipelines  
and submarine cables are required to be  
marked, and those that were originally marked  
may have become exposed. Mariners should  
exercise caution when operating vessels in  
depths of water comparable to the depth in  
areas where pipelines and cables may exist,  
and when anchoring, dragging or towing.  
Covered wells may be marked by lighted  
buoys and bungs.

contained in 40  
on concerning the  
The sites may be  
Agency (EPA). See  
of EPA offices.

Judges along  
or green on  
4-hand side  
ion Chart Sample  
y Electronic Charts  
AVIGATION

equipment Out are  
sa of various  
sition should be  
g flooded tide with  
out occurs when  
out less serious  
during ebb tides.  
umping basin at  
which may make  
counter current

DD ARDA  
on of the area  
the  
using ink or any  
paper on, or by  
other means

standing orders  
a pass bottom  
for Emergenc

Copyright Ngs 2013  
NOT FOR NAV

Copyright Ngs 2013  
NOT FOR NAV

Reduced Resolution Chart Sample  
Copyright MapTech Electronic Charts  
NOT FOR NAVIGATION

Reduced Resolution  
Copyright MapTech El  
NOT FOR NAV

Reduced Resolution  
Copyright Ngs 2013  
NOT FOR NAV

*Racing Area*