

## Columbia – Halyard Hustle

Organizing Authority - Columbia Yacht Club (COLYC)

August 27<sup>th</sup>, 2022

Chicago, Illinois (USA)

### SAILING INSTRUCTIONS (SIs)

*The notation [NP] in a rule means that a boat may not protest another boat for breaking that rule. This changes RRS 60.1(a).*

#### 1. RULES

- 1.1. These races will be governed by the rules as defined in The 2021-2024 Racing Rules of Sailing (“RRS”) and the notices of race.
- 1.2. U.S. Sailing prescriptions will apply, except for the prescriptions to RRS 63.2.
- 1.3. NP] COVID-19 can be a serious health concern and each competitor shall judge his or her own ability to participate during this health threat. All applicable governmental regulations regarding health, safety and infectious disease control shall be strictly followed by all competitors, specifically including any crew limits and requirements for personal protective equipment (PPE).

#### 2. CHANGES TO SAILING INSTRUCTIONS

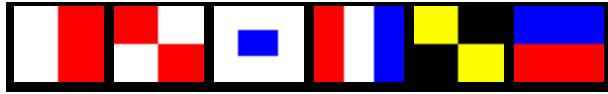
- 2.1. Any changes to the sailing instructions will be posted before 0900 on the day it will take effect, except that any change to the schedule of races will be posted by 2000 on the day before it will take effect.
- 2.2. Changes to the sailing instructions will be posted on the event’s Yachtscoring.com page and a courtesy notification will be sent via e-mail and/or text message to all entered competitors. Additionally, the Race Committee may provide courtesy broadcasts during each race via VHF 78. Failure to receive courtesy emails, text messages, or broadcasts are not grounds for redress. This changes RRS 62.1.

#### 3. COMMUNICATIONS WITH COMPETITORS

- 3.1. Notices to competitors will be published on the official notice board for the event, available at Yachtscoring.com and a courtesy notification will be sent via e-mail and/or text to all entered competitors. Additionally, the Race Committee may provide courtesy broadcasts during each race via VHF 78. Failure to receive courtesy emails, text messages, or broadcasts are not grounds for redress. This changes RRS 62.1.

#### 4. SIGNALS MADE ASHORE

- 4.1. Signals made ashore will be displayed from the Organizing Authority’s clubhouse.
- 4.2. When flag AP is displayed ashore, ‘1 minute’ is replaced with ‘not less than 75 minutes’ in the race signal AP.



## Columbia – Halyard Hustle

4.3. Information provided via code flags may also be sent via email and text message to skippers of all entered yachts. Failure to receive courtesy emails, text messages, or broadcasts are not grounds for redress. This changes RRS 62.1.

### 5. SCHEDULE OF RACES

5.1 The scheduled time of the warning signal for the event is 1100 (CDT). All sections shall have one race.

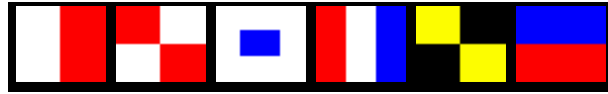
### 6. CLASS FLAGS

The class flags are:

Class	Flag
JAM	D
T-10	0 (zero)
ORC and MWPHRF	5, 4, 3, 2, 1
Beneteau 36.7	6
Beneteau 40.7	7
J105	J
J109	9
J111	E
J88	K
Double-Handed	Q

### 7. RACING AREAS

The starting area for the race shall be N 41 51.17 W 87 33.41. Chicago Beer Can Series Center Mark, SA7.



## Columbia – Halyard Hustle

### 8. CHECK-IN/CHECK-OUT

- 8.1. When arriving at the starting area, boats shall approach the Race Committee boat, hail their sail number, and receive acknowledgement from the Race Committee.
- 8.2. If a boat withdraws from the race, it shall notify the Race Committee via VHF 78. If it does not receive a confirmation from the Race Committee of their withdrawal it shall also send an email, at the first reasonable opportunity, stating their withdrawal to [regattachair@colyc.org](mailto:regattachair@colyc.org).

### 9. COURSES

Courses shall be provided in Appendix A.

### 10. THE START

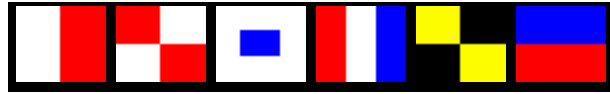
- 10.1. The starting line will be between a staff displaying an orange flag on the Race Committee signal boat and an orange floating mark.
- 10.2. The Race Committee may set a guard mark off the stern of the signal boat. In such a case, boats shall not sail between the signal boat and the guard mark.
- 10.3. During the starting sequence, the Race Committee will fly the appropriate class flag, as set forth in the table below. Boats racing in ORC, MWPHRF, JAM and Double-Handed classes shall fly the appropriate class flag on their backstay.
- 10.4. Boats whose class signal has not been made shall keep clear of the starting area.
- 10.5. Any boat starting more than 10 minutes after its class' start will be scored DNS.
- 10.6. Individual recalls will be signaled in accordance with RRS 29.1. The Race Committee will attempt to hail OCS boats by sail number via VHF 78. Failure to make or hear such hails is not grounds for redress. This changes RRS 62.1(a).

### 11. THE FINISH

- 11.1. The finish line will be between a staff displaying a blue flag on the Race Committee signal boat and the course side of a finishing mark, which may be left to port or starboard. Unless the Race Committee shortens the course, the finish location will be located at the same place as the starting area.
- 11.2. If the Race Committee boat is absent from the designated finish line, an alternate finish line may be described in each race's amendment to these Sailing Instructions, and boats should cross the alternate finish line. Upon doing so, the boat shall report its finish time (per its GPS) to the Race Committee via VHF 78.

### 12. PENALTY SYSTEM

- 12.1. RRS 44.3 shall apply, modified as follows: "The corrected finish of a boat that accepts a penalty under RRS 44.3 shall be 20% of the number of boats started in that class, taken to the higher whole number, but such penalty shall place a yacht no worse than last in her class. Her adjusted place, for determining her



## Columbia – Halyard Hustle

placement in her division, shall be one second greater than the time of the boat placing just before her in her division. This changes RRS A.4.1 and A5.

- 12.2. A boat successfully protested by the Race Committee for failing to properly display her class or sail number board as required, shall be penalized one place in her class. Her corrected time shall be the next boat to finish in her class, plus one second. This changes RRS A4.1 and A5.

### 13. TIME LIMITS

The time limit for the race will be 1700 hours.

### 14. HEARING REQUESTS

- 14.1. A boat intending to protest or seek redress shall notify the Race Committee of the sail number(s) of the boat(s) being protested immediately after finishing and shall receive specific acknowledgement.
- 14.2. Protests and requests for redress shall be filed with the Race Committee by 1200 hours on the first weekday following the weekend's races. Protests shall be submitted via the appropriate portal on each Race's website.
- 14.3. Protest and redress hearings will be scheduled by each Organizing Authority's Protest Committee.
- 14.4. Violations of Section 4 of the Notice of Races are protestable only by the Race Committee.

### 15. SCORING

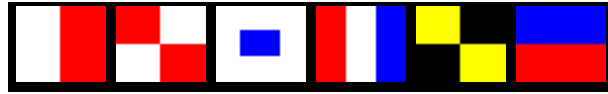
- 15.1. Each race addressed herein will be scored individually.
- 15.2. Class breaks will be set by each Organizing Authority, and shall be posted on the Official Notice board no later than 2000 hours on the day prior to the event's start time, with courtesy notifications sent to all competitors via email or text. Failure to receive courtesy emails, text messages, or broadcasts are not grounds for redress. This changes RRS 62.1.
- 15.3. ORC classes shall be scored Time-on-Time (TOT) using the All Purpose single scoring number.
- 15.4. MWPHRF classes shall be scored Time-on-Time (TOT) using formula  $HCP \text{ rating} = 650 / (550 + MWPHRF \text{ DHCP rating})$ .

### 16. PRIZES

Prizes will be awarded as described in the Notice of Races. The Organizing Authority will provide information about award ceremonies via e-mail and/or text to all competitors.

### 17. THANKS

Thanks to all sailors for joining us for these races, and special thanks to our sponsors!



## Columbia – Halyard Hustle

# Appendix A – COURSE INFORMATION

### 9.1 COURSES

The Race Committee (RC) will select a course for each section from the below list. There are 12 possible Performance courses and 4 Casual courses. The courses will be displayed on the official course board on the RC boat prior to the first warning signal. A courtesy announcement may be made over VHF.

### 9.1 COURSE LATITUDE/LONGITUDE, BEARING AND DISTANCE

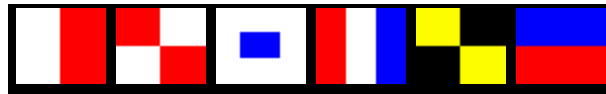
The course Latitude / Longitude, bearing and distance in the below charts are approximate and are not grounds for redress.

### 9.2 SHORTENING OR ABANDONING AFTER THE START

After the starting signal, the race committee may shorten the course(s) or abandon the race for any reason via announcement over VHF.

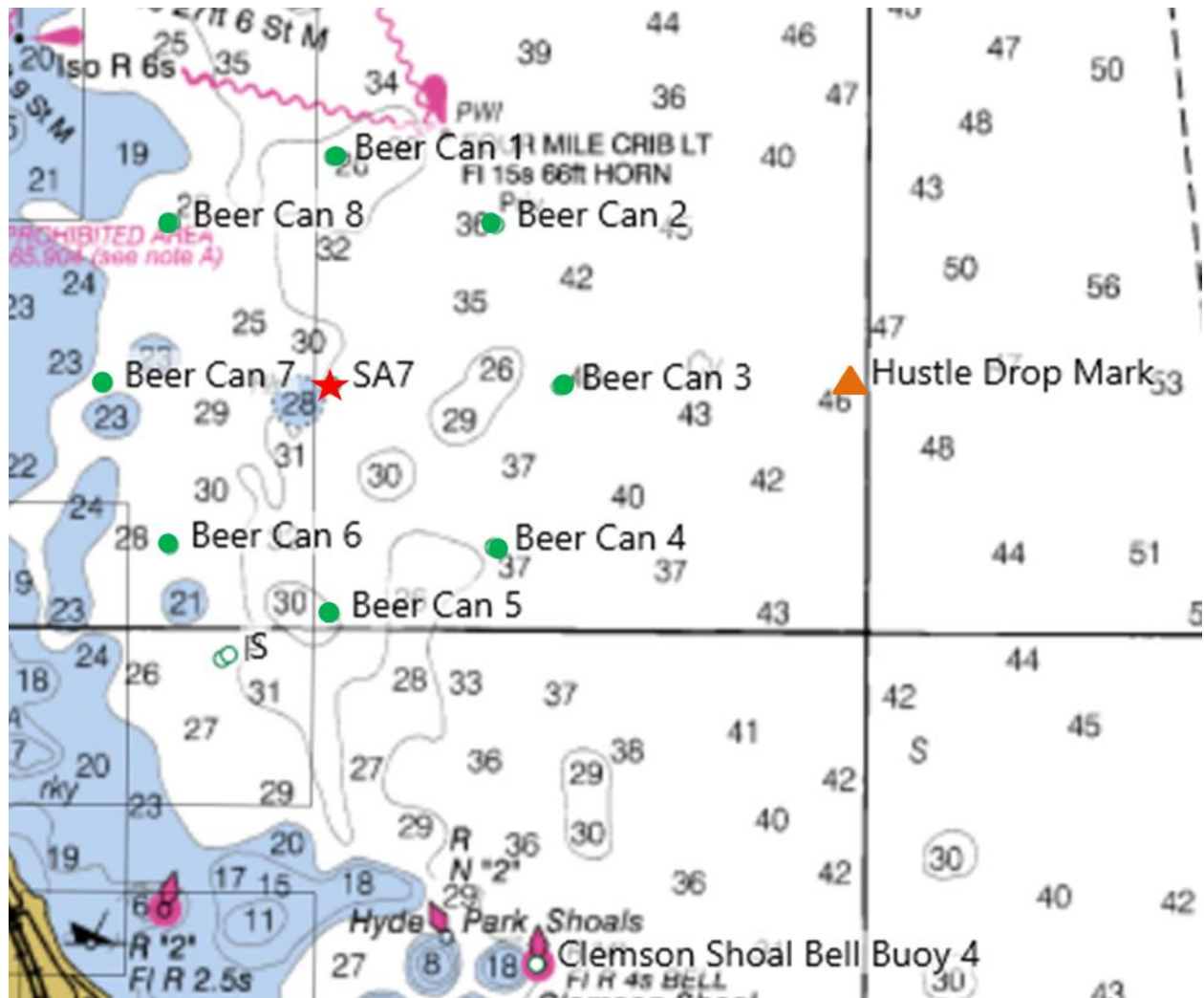
## MARK LIST

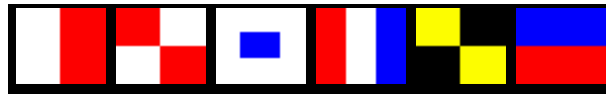
Course Marks	Approximate Latitude/Longitude		General Description
STARTING AREA (SA7)	41 51.17 N	87 33.41 W	White cylinder, Center Mark
Beer Can 1	41 52.26 N	87 33.41 W	White cylinder, with race # 1
Beer Can 2	41 51.94 N	87 32.37 W	White cylinder, with race # 2
Beer Can 3	41 51.17 N	87 31.95 W	White cylinder, with race # 3
Beer Can 4	41 50.40 N	87 32.37 W	White cylinder, with race # 4
Beer Can 5	41 50.08 N	87 33.41 W	White cylinder, with race # 5
Beer Can 6	41 50.40 N	87 34.44 W	White cylinder, with race # 6
Beer Can 7	41 51.17 N	87 34.87 W	White cylinder, with race # 7
Beer Can 8	41 51.94 N	87 34.44 W	White cylinder, with race # 8
Clemson Shoal Bell Buoy 4	41 48.41 N	87 32.08 W	Red Bell Buoy
Hustle Drop Mark	41 51.20 N	87 30.10 W	Inflatable Tetrahedron
FINISH AREA (SA7)	41 51.17 N	87 33.41 W	White cylinder, Center Mark



## Columbia – Halyard Hustle

Mark Locations and Course Area (approximate)

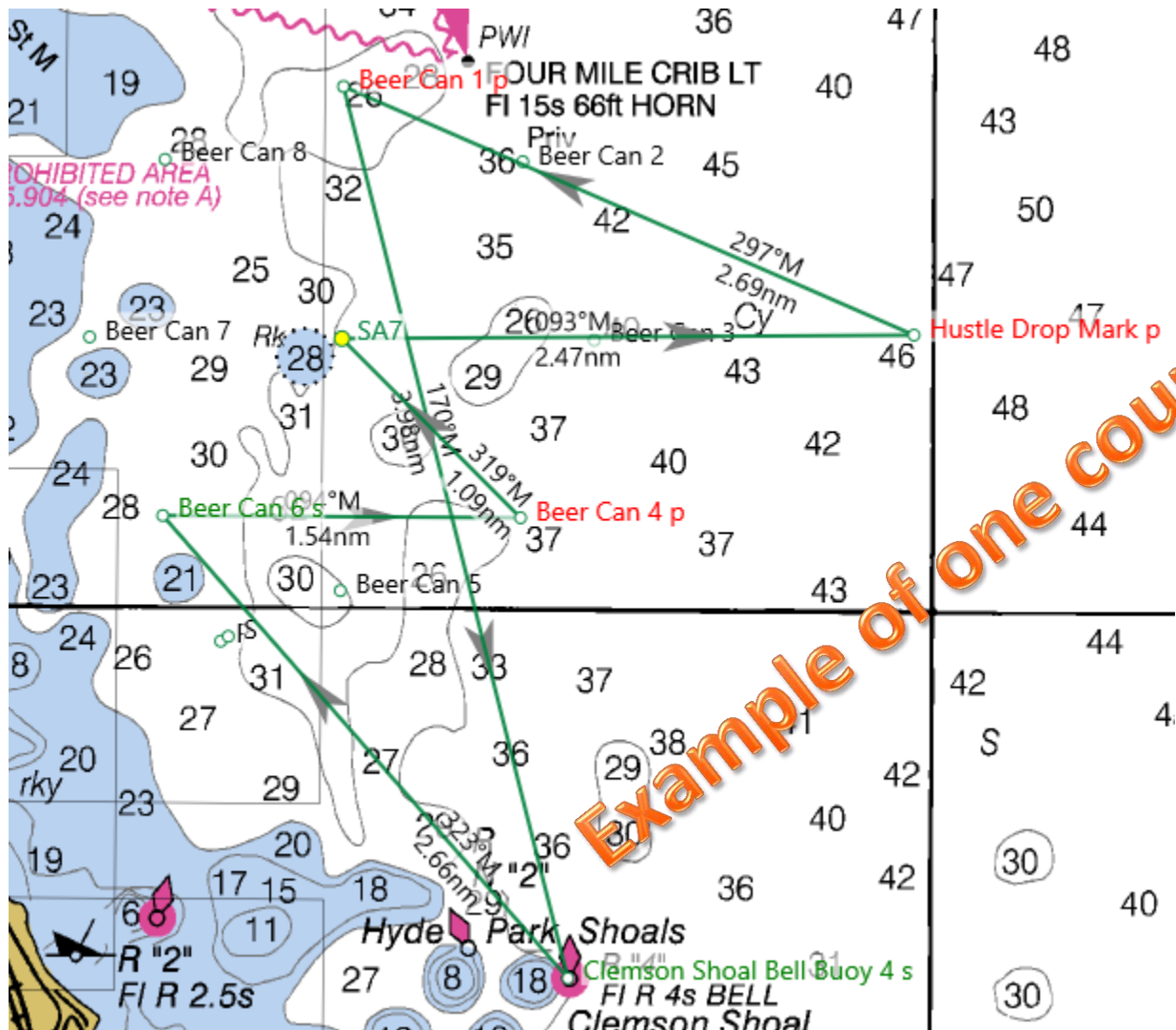


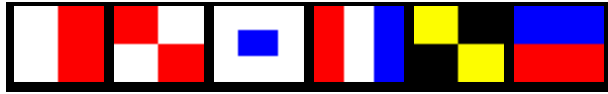


## Columbia – Halyard Hustle

### Example of Course E – Echo

Use the above map to draw your course.





## Columbia – Halyard Hustle

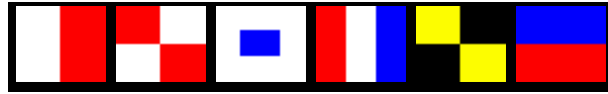
### PERFORMANCE RACERS - COURSE LIST

COURSE A - Alpha Marks	Mark Rounding	Approx. Bearing	Approx. Distance	Comment
SA7				
Beer Can 1	Port	0	1.09	
Beer Can 6	Port	202	2.02	
Clemson Shoal Bell Buoy 4	Port	139	2.66	Avoid Hyde park shoal
Beer Can 3	Starboard	2	2.77	
Hustle Drop Mark	Starboard	89	1.38	Inflatable Tetrahedron
Clemson Shoal Bell Buoy 4	Starboard	208	3.16	Avoid Hyde park shoal
SA7		340	2.94	
			<b>16.02</b>	

COURSE B - Bravo Marks	Mark Rounding	Approx. Bearing	Approx. Distance	Comment
SA7				
Beer Can 1	Port	0	1.09	
Beer Can 6	Port	202	2.02	
Beer Can 3	Starboard	67	2.01	
Hustle Drop Mark	Starboard	89	1.38	Inflatable Tetrahedron
Clemson Shoal Bell Buoy 4	Starboard	208	3.16	Avoid Hyde park shoal
SA7		340	2.94	
			<b>12.60</b>	

COURSE C - Charlie Marks	Mark Rounding	Approx. Bearing	Approx. Distance	Comment
SA7				
Beer Can 1	Port	0	1.09	
Beer Can 6	Port	202	2.02	
Beer Can 3	Starboard	67	2.01	
Hustle Drop Mark	Starboard	89	1.38	Inflatable Tetrahedron
Beer Can 5	Starboard	246	2.71	
SA7		0	1.09	
			<b>10.30</b>	



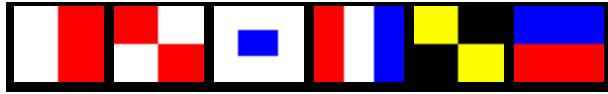


## Columbia – Halyard Hustle

COURSE D - Delta Marks	Mark Rounding	Approx. Bearing	Approx. Distance	Comment
SA7				
Hustle Drop Mark	Port	89	2.47	Inflatable Tetrahedron
Beer Can 8	Port	283	3.32	
Clemson Shoal Bell Buoy 4	Starboard	154	3.95	Avoid Hyde park shoal
Beer Can 7	Starboard	323	3.46	
Beer Can 4	Port	112	2.02	
SA7		315	1.09	
			<b>16.31</b>	

COURSE E - Echo Marks	Mark Rounding	Approx. Bearing	Approx. Distance	Comment
SA7				
Hustle Drop Mark	Port	89	2.47	Inflatable Tetrahedron
Beer Can 1	Port	293	2.69	
Clemson Shoal Bell Buoy 4	Starboard	166	3.98	Avoid Hyde park shoal
Beer Can 6	Starboard	319	2.66	
Beer Can 4	Port	90	1.54	
SA7		315	1.09	
			<b>14.43</b>	

COURSE F - Foxtrot Marks	Mark Rounding	Approx. Bearing	Approx. Distance	Comment
SA7				
Hustle Drop Mark	Port	89	2.47	Inflatable Tetrahedron
Beer Can 2	Port	294	1.85	
Clemson Shoal Bell Buoy 4	Starboard	176	3.54	Avoid Hyde park shoal
Beer Can 5	Starboard	329	1.95	
SA7		0	1.09	
			<b>10.90</b>	



## Columbia – Halyard Hustle

COURSE G - Golf Marks	Mark Rounding	Approx. Bearing	Approx. Distance	Comment
SA7				
Clemson Shoal Bell Buoy 4	Port	160	2.94	Avoid Hyde park shoal
Hustle Drop Mark	Port	28	3.16	Inflatable Tetrahedron
Beer Can 3	Port	269	1.38	
Clemson Shoal Bell Buoy 4	Starboard	182	2.77	Avoid Hyde park shoal
Beer Can 6	Starboard	319	2.66	
Beer Can 1	Starboard	22	2.02	
SA7		180	1.09	

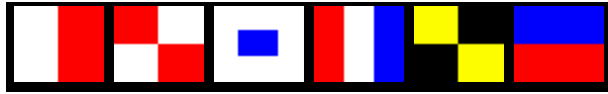
**16.02**

COURSE H - Hotel Marks	Mark Rounding	Approx. Bearing	Approx. Distance	Comment
SA7				
Clemson Shoal Bell Buoy 4	Port	160	2.94	Avoid Hyde park shoal
Hustle Drop Mark	Port	28	3.16	Inflatable Tetrahedron
Beer Can 3	Port	269	1.38	
Beer Can 6	Starboard	247	2.01	
Beer Can 1	Starboard	22	2.02	
SA7		180	1.09	

**12.60**

COURSE I - India Marks	Mark Rounding	Approx. Bearing	Approx. Distance	Comment
SA7				
Beer Can 5	Port	180	1.09	
Hustle Drop Mark	Port	66	2.71	Inflatable Tetrahedron
Beer Can 3	Port	269	1.38	
Beer Can 6	Starboard	247	2.01	
Beer Can 1	Starboard	22	2.02	
SA7		180	1.09	

**10.30**

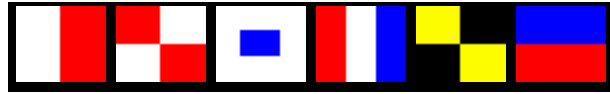


## Columbia – Halyard Hustle

COURSE J - Juliet Marks	Mark Rounding	Approx. Bearing	Approx. Distance	Comment
SA7				
Beer Can 7	Port	274	1.09	
Clemson Shoal Bell Buoy 4	Port	147	3.46	Avoid Hyde park shoal
Beer Can 1	Starboard	350	3.98	
Hustle Drop Mark	Starboard	117	2.69	Inflatable Tetrahedron
Beer Can 6	Starboard	260	3.34	
SA7		49	1.09	
			<b>15.65</b>	

COURSE K - Kilo Marks	Mark Rounding	Approx. Bearing	Approx. Distance	Comment
SA7				
Beer Can 7	Port	274	1.09	
Clemson Shoal Bell Buoy 4	Port	147	3.46	Avoid Hyde park shoal
Beer Can 2	Starboard	1	3.54	
Hustle Drop Mark	Starboard	118	1.85	Inflatable Tetrahedron
Beer Can 6	Starboard	260	3.34	
SA7		49	1.09	
			<b>14.37</b>	

COURSE L - Lima Marks	Mark Rounding	Approx. Bearing	Approx. Distance	Comment
SA7				
Beer Can 7	Port	274	1.09	
Beer Can 4	Port	117	2.02	
Beer Can 2	Starboard	4	1.54	
Hustle Drop Mark	Starboard	118	1.85	Inflatable Tetrahedron
Beer Can 6	Starboard	260	3.34	
SA7		49	1.09	
			<b>10.93</b>	



## Columbia – Halyard Hustle

### CASUAL RACERS - COURSE LIST

COURSE M - Mike Marks	Mark Rounding	Approx. Bearing	Approx. Distance	Comment
SA7				Center Pin
Beer Can 8	Port	315	1.09	
Beer Can 6	Port	180	1.54	
Beer Can 2	Starboard	45	2.18	
Beer Can 4	Starboard	180	1.54	
SA7		315	1.09	Center Pin

**7.44**

COURSE N - November Marks	Mark Rounding	Approx. Bearing	Approx. Distance	Comment
SA7				Center Pin
Beer Can 2	Port	45	1.09	
Beer Can 8	Port	270	1.54	
Beer Can 4	Starboard	135	2.18	
Beer Can 6	Starboard	270	1.54	
SA7		45	1.09	Center Pin

**7.44**

COURSE O - Oscar Marks	Mark Rounding	Approx. Bearing	Approx. Distance	Comment
SA7				Center Pin
Beer Can 6	Port	225	1.09	
Beer Can 4	Port	90	1.54	
Beer Can 8	Starboard	315	2.18	
Beer Can 2	Starboard	90	1.54	
SA7		225	1.09	Center Pin

**7.44**

COURSE P - Papa Marks	Mark Rounding	Approx. Bearing	Approx. Distance	Comment
SA7				Center Pin
Beer Can 8	Port	315	1.09	
Beer Can 2	Port	90	1.54	
Beer Can 6	Starboard	225	2.18	
Beer Can 4	Starboard	90	1.54	
SA7		315	1.09	Center Pin

**7.44**