



**SOUTHERN BAY RACE WEEK**  
**PRELIMINARY (May 12, 2016 - corrects Appendix C diagram)**  
**JUNE 3-4-5, 2016**

**SAILING INSTRUCTIONS**

**Organizing Authorities:**  
**Hampton Yacht Club**  
**Cruising Club of Virginia**  
**Old Point Comfort Yacht Club**

**1. RULES**

- 1.1** The regatta will be governed by the Racing Rules of Sailing, 2013-2016, as modified herein.
- 1.2** Appendix T, Section C (Expedited Hearings) will be in effect.
- 1.3** US Sailing Prescriptions to RRS 60, 63.2, and 63.4 will not apply.
- 1.4** The J/70 Class Rules I.1.1 (Spare Gennaker) and I.1.3 (Support Boats) will apply.

**2. ENTRIES**

- 2.1** The regatta is open to monohull keelboats or multihulls, provided each is over 20 feet LOA.
- 2.2** All participating boats must meet current PHRF Equipment Category Ches Bay requirements, except that One-Design Fleets must meet safety standards of their class rules.
- 2.3** Eligible boats may enter by doing one of the following:
  - a. Entering online at [www.yachtscoring.com](http://www.yachtscoring.com) ,
  - b. Completing an official SBRW Entry Form (available at [www.yachtscoring.com](http://www.yachtscoring.com)) and mailing it to Lin McCarthy, 4401 Chesapeake Ave, Hampton, VA 23669.
- 2.4** All boats, except those in the Cruising Class, must have a current, valid measurement certificate on file with their appropriate Class Association.
  - a. PHRF ratings will be those in effect and posted on the PHRF of the Chesapeake Valid List at the time of the event or a temporary rating issued by an official handicapper of PHRF of the Chesapeake.
  - b. Multihulls must have a current, valid rating from Chesapeake Multihull Association (CMA).
  - c. Cruising Class ratings will be assigned by the Race Committee and may not be appealed.
- 2.5** An entered boat may not change fleets later than 1800 on Thursday, June 2.
- 2.6** The owner/skipper of each boat entered shall be responsible for the actions of his/her crew and guests. The legal drinking age in Virginia is 21 years old. Proof of age will be required. In the event of a serious breach of conduct, sportsmanship, destruction of property, under age drinking, or failure to comply with a request from any regatta official, the boat or competitor may be subject to expulsion from the regatta.

### 3. BOAT REQUIREMENTS

**3.1** Once launched, all boats (except Vipers) shall remain in the water until the conclusion of the regatta, except with prior written permission of the Principal Race Officer.

**3.2** All boats (except Cruising Class) shall display either the sail number issued by their National Authority (US Sailing) or the number as maintained by their fleet or class. All sail numbers on a boat must be the same, except with prior written permission from the Principal Race Officer.

**3.3** From the backstay, each boat must clearly display her class flag or ribbon as per Appendix F.

### 4. NOTICES TO COMPETITORS & CHANGES TO SAILING INSTRUCTIONS

**4.1** Notices to competitors will be posted on the Official Notice Board located in the regatta tent.

**4.2** Changes to these Sailing Instructions will be posted by 0800 on the day they will take effect, except that any change to the schedule of races will be posted no later than 15 minutes after the expiration of the protest time limit on the day before it will take effect.

**4.3** The designated VHF radio channel for each course is:

- a. One-Design Course (each day) = VHF-71**
- b. PHRF Course (Friday & Sunday) = VHF-72**
- c. Distance Race on Saturday = VHF-72 (Finish Line = VHF-9)**
- d. Multihull Course on Friday = VHF-73**
- e. Cruising/Multihull Course on Sunday = VHF-73**

### 5. SIGNALS MADE ASHORE

**5.1** Signals made ashore will be displayed at the HYC flagpole.

**5.2** The display of Flag "AP" ashore accompanied by two sound signals means the start of racing is postponed. The lowering of Flag "AP" ashore with one sound signal means the Warning Signal for the next race shall be made in not less than 60 minutes. This changes RRS Race Signals "AP".

**5.3** Any abandonment, postponement ashore, or relocation of racing to the harbor will be broadcast on the designated VHF radio channel for each course at approximately 0830 and repeated periodically until 0900 (or longer if the RC deems it necessary).

### 6. RACING FORMAT AND AREAS

#### 6.1 One-Design Course:

- (a) Friday: Multiple windward/leeward races in harbor. (See Appendix B)  
Rendezvous at: 36 56.97 N 76 22.40 W (Y N "J" NE of Mid. Ground Lt)
  - (b) Saturday: Multiple windward/leeward races in harbor. (See Appendix B)  
Rendezvous at: 36 58.13 N 76 22.03 W (R N "20" off Hampton Flats)
  - (c) Sunday: Multiple windward/leeward races in Bay. (See Appendix B)  
Rendezvous at: 36 58.70 N 76 16.00 W (1 nm NW of Harrisons Pier)
- \*\*\*Note: Should racing be relocated into the Harbor on Sunday, the One-Design Course will rendezvous and operate off Craney Island as shown for Friday. (Instruction 6.1(a))

#### 6.2 PHRF Course:

- (a) Friday: Multiple windward/leeward races in harbor. (See Appendix C)  
Rendezvous at: 36 58.13 N 76 22.03 W (R N "20" off Hampton Flats)
  - (b) Saturday: Distance Race in Bay. (See Appendix D)  
Rendezvous at: 37 01.98 N 76 15.75 W (R "2" off Buckroe)
  - (c) Sunday: Multiple windward/leeward races in Bay. (See Appendix C)  
Rendezvous at: 36 58.50 N 76 14.50 W (1 nm NE of Harrisons Pier)
- \*\*\*Note: Should racing be relocated into the Harbor on Sunday, the PHRF Course will rendezvous and operate off Hampton Flats as shown for Friday. (Instruction 6.2(a))

### 6.3 Cruising/Multihull Course:

- (a) Friday: Multihull only: Multiple windward/leewards in Bay off Buckroe (See App. G)  
Rendezvous at: 37 01.98 N 76 15.75 W (R "2" off Buckroe)
  - (b) Saturday: Multihull & Cruising: Distance Race in Bay. (See Appendix D)  
Rendezvous at: 37 01.98 N 76 15.75 W (R "2" off Buckroe)
  - (c) Sunday: Multihull & Cruising: One mixed leg race in Bay. (See Appendix E)  
Rendezvous at: 36 58.00 N 76 13.00 W (2.8 nm NW of Little Creek Inlet)
- \*\*\*Note: Should racing be relocated into the Harbor on Sunday, the Cruiser/Multihull boats will rendezvous in the Harbor and operate as shown in Appendix E, Page 2.

**\*\*Note: Rendezvous locations are approximate. The RC may locate the actual starting line within 1 nm of the designated rendezvous point without flying Flag L.**

**6.4** If the Race Committee intends to run another race that day, it will signal its intentions by displaying Flag "R" from the RC Signal Boat at the finish of the race in progress.

**6.5** The scheduled time for the Warning Signal for the first race of each day is 1000.

### 7.0 Daily Schedules

**7.1** Daily schedules are:

Thursday, June 2		Friday, June 3	
Opening Party	1800 - 2100	Warning	1000
(free beer and food)		Beer tap open	1600
Skippers Meeting	1900	Party, music, food	1700 - 2000
		Daily Awards	1915 (approx.)
Saturday, June 4		Sunday, June 5	
Warning	1000	Warning	1000
Beer tap open	1600	Party & Awards	ASAP after racing
Party, music, food	1700 - 2100		
Daily Awards	1915 (approx.)		

**7.2** On Sunday, no starting sequence may begin after 1430.

### 8. COURSES

**8.1** Information for each course is promulgated in the following Appendices:

- a. Appendix A shows the racing areas for each day.
- b. Appendix B contains information on the One-Design Course for all three days.
- c. Appendix C contains information on the PHRF Course for Friday and Sunday.
- d. Appendix D contains information on Saturday's Distance Race for PHRF, Multi, Cruising
- e. Appendix E contains information on Sunday's racing for the Cruising & Multihulls.
- f. Appendix F contains information on Classes, Flags, and Order of Starts.
- g. Appendix G contains information on Friday's Multihull Course.

**8.2** When appropriate, prior to the Warning Signal course information will be displayed on a course board located on the RC Signal Boat.

- a. A **RED** number will indicate the total number of LAPS to be sailed.
- b. A **BLACK** number will indicate the approx. bearing and distance from the RC Signal Boat to the Weather Mark. If two weather marks are to be used, fleets using Mark 1 will be shown on the top line and fleets using Mark 2 will be shown on the bottom line.
- c. The RC may also broadcast the course information via the designated VHF radio channel for that course.

## **9. CLASSES, FLEET SPLITS, AND ORDER OF STARTS**

**9.1** Classes, Fleet Splits and Order of Starts (Appendix F) will be officially announced, posted, and distributed at the Thursday Skippers Meeting. Preliminary, unofficial information regarding fleets, tentative fleet splits, class flags, and Order of Starts will be posted and updated at HYC and on the event website at [www.yachtscoring.com](http://www.yachtscoring.com) beginning a few weeks before the regatta.

**9.2** Classes will be organized and, if necessary, sub-divided to produce the best, most competitive racing.

## **10. MARKS**

### **10.1** PHRF Courses (Friday and Sunday – See Appendix C)

Long Weather Mark (Mark 1)	Orange Cylinder <b>(w/ black band)</b>
Short Weather Mark (Mark 2)	Orange Cylinder
Change Mark	Yellow Cylinder
Leeward Gate (3s & 3p)	(2) "West Marine" Yellow Inflatables
Starting Pin	Green Cylinder
Finish Pin	Red Ball

### **10.2** One-Design Course (Daily – See Appendix B)

Weather Mark (Mark 1)	Orange Cylinder (Offset Mark = Red ball)
Change Mark	Yellow Cylinder (Change Offset = Red ball)
Leeward Mark (Mark 2)	Orange Cylinder
Starting Pin	Green Cylinder
Finish Pin	Red Ball

### **10.3** Multihull Course (Friday Only – See Appendix G)

Weather Mark	Orange Cylinder
Change Mark	Yellow Cylinder
Start Pin/Leeward Mark	Green Cylinder
Finish Pin	Red Ball

**10.4** For Saturday's Distance Race: See Appendix D.

**10.5** For Sunday's Cruising/Multihull Fleet Race: See Appendix E.

## **11. BOAT CHECK-IN**

Before the warning signal for her first race each day, each boat shall pass by the stern of the RC Signal Boat and hail her name and/or sail number until acknowledged by the Race Committee.

## **12. THE START**

**12.1** Races will be started using RRS 26 as modified by Instruction 12.2 below.

**12.2** Approximately one (1) minute prior to the beginning of a starting sequence, the RC will make an Attention Signal consisting of a series of short sounds. This is not a timed signal.

**12.3** The starting line will be between the staff displaying an orange flag on the RC Signal Boat at the starboard end of the line and a green cylinder or designated government mark at the port end.

## **13. COLLISION WITH RACE COMMITTEE BOAT**

If any boat collides with any Race Committee vessel and causes injury or serious damage, her penalty shall be to retire.

## **14. RECALLS**

**14.1** Individual Recalls will be signaled in accordance with RRS 29.1. Additionally, the Race Committee will attempt to notify boats who are OCS via hail on the designated VHF radio channel for that course.

**14.2** Failure of this transmission to be made or received, promptness of the notification, or the position of a boat in the notification sequence shall not be grounds for granting redress. This changes RRS 62.1 (a).

## **15. COURSE CHANGE AFTER START**

**15.1** To change the next leg of the course, the Race Committee will lay a new mark and remove the original mark as soon as practicable.

**15.2** If, during the signaling of a course change, Flag "Q" is displayed with Flag "C", the indicated course change applies only to the last weather leg of the course. This changes RRS 33 and RRS Race Signals.

## **16. SHORTENING COURSE**

**16.1** Courses may be shortened as per RRS 32.

**16.2** For the Saturday Distance Race only, the final sentence of RRS 32.2 is changed to read:  
"A course may be shortened even if a boat has already passed the mark at which the race is to be shortened, provided the Race Committee was on station and recorded the exact time at which each boat rounded that mark." All boats will be scored using the time they passed the mark at which the course is shortened.

## **17. THE FINISH**

**17.1** For all windward/leeward courses, the finish line will be on the opposite side of the RC Signal Boat from the starting line. The finish line will be between the staff displaying an orange flag on the RC Signal Boat at the starboard end of the finish line and a red ball at the port end (looking downwind). Except for Friday's Multihull Course, the finish line will be located approx. 600' to leeward of the leeward mark or gate. (See Appendices B, C, & G).

**17.2** For Saturday's Distance Race in the Bay, the finish line will be between CCV Bay Mark "Q" (R "22") at the port end of the finish line and the staff displaying an orange flag on the Fort Monroe seawall at the starboard end. (See Appendix D)

**17.3** If Saturday's Distance Race is moved into the harbor, the finish line will be between the staff displaying an orange flag on the RC Signal Boat at one end of the line and an inflatable mark at the other. (See Appendix D, Page 2)

**17.4** For Sunday's Multihull/Cruising Course, the finish line will be between the RC Signal Boat at one end of the line and an inflatable mark at the other. (See Appendix E)

**17.5** Each boat is responsible for taking her own finish time and recording the name and/or sail number of the boat finishing directly ahead and astern of her. This information shall be provided to the Race Committee upon request.

## **18. THE PENALTY SYSTEM**

**18.1** For the One-Design Course only, the first two sentences of RRS 44.1 are changed to read:  
"A boat may take a One-Turn Penalty when it may have broken a rule of Part 2 or rule 31 while racing. However, when she may have broken a rule of Part 2 while in the zone around a mark (other than a starting mark), her penalty shall be a Two-Turns Penalty." Unless the course is shortened to finish at the weather mark, penalties within the zone of the windward mark or on the offset leg may be delayed and taken as soon as possible on the downwind leg.

**18.2** For all other courses, RRS 44.1 is in effect as written.

## **19. CALLING BOATS IN**

**19.1** In the interest of starting another race or completing the day's racing in a timely fashion, the Race Committee may assign a finish position to any boat(s) still racing, provided the position(s) can be determined in a reasonable manner. Such boat(s) will be scored as though they have finished. This changes RRS 28.1, 35, A3, and A4.1 and 4.2.

**19.2** If another race is to be sailed that day, once notified by the Race Committee, all boats who have been called in shall proceed as quickly as possible to the starting area so that the next race may be started promptly.

## **20. TIME LIMITS**

**20.1** For the One-Design Course each day, any race in which no boat sails the course and finishes within two (2) hours after the start of her fleet will be abandoned for that fleet. Also, any boat still racing but not finishing within 20 minutes after the first boat in her fleet sails the course and finishes will be scored TLE (Time Limit Expired) without a hearing.

**20.2** For the PHRF Course on Friday and Sunday and for the Multihull Course on Friday, any race in which no boat sails the course and finishes within 2 ½ hours after the start of her fleet will be abandoned for that fleet. Also, any boat still racing but not finished within 30 minutes after the first boat in her fleet sails the course and finishes will be scored TLE (Time Limit Expired) without a hearing.

**20.3** For the Distance Race on Saturday, the time limit for all boats to finish is 1630. Boats still racing but not finished by 1630 will be scored TLE (Time Limit Expired).

**20.4** For the Cruising/Multihull Course on Sunday, the time limit for all boats to be finished is 1430. Boats still racing but not finished by 1430 will be scored TLE (Time Limit Expired).

**20.5** A boat scored TLE (Time Limit Expired) will, without a hearing, be scored one point more than the number of boats in her fleet who sailed the course properly and finished within the time limit. In no case, may this score be more than the number of boats entered in her fleet. This changes RRS 35, A4.2, A5, and A11.

## **21. RETIRING**

Any boat retiring from a race shall promptly notify the Race Committee for her course, either by hail or radio transmission on the designated VHF radio channel. Such attempt at notification shall be continued until acknowledged by the Race Committee. This is an important safety procedure and boats should be aware that failure to comply is a breach of the rules.

## **22. SCORING**

**22.1** The regatta will be scored using the Low Point Scoring System of Appendix A.

**22.2** Appendix A2 is modified as follows:

- a. If fewer than five (5) races are completed, a boat's series score will be the total of her race scores.
- b. If five (5) or more races are completed, a boat's series score will be the total of her scores, excluding her worst excludable score.

**22.3** The completion of at least one race will constitute a regatta.

**22.4** All scoring and race results will be posted on [www.yachtscoring.com](http://www.yachtscoring.com). In addition, printed results will be posted on the window of the NE corner of the HYC lounge.

**22.5** Daily trophies will be computed by combining all races for that day into a single score. However, all races will be considered separately for overall Race Week scoring.

## **23. PROTESTS**

**23.1** Section C (Expedited Hearings) of Appendix T (Alternate Procedures for Dispute Resolution) will be in effect.

**23.2** Written protests must be delivered to the Judges' Table in the HYC lounge within one hour of the RC Signal Boat for that boat's course docking at HYC. Also, RRS 62.2 is changed to require that a written request for redress must be presented within the protest time limit or 30 minutes after the relevant incident, whichever is later.

**23.3** The official Protest Notice Board will be located at the Judges' Table. All protest documents including time limits, hearing schedules, and results of hearings will be posted on this board. It is each boat's responsibility to check this board to see if she is cited in a protest, called as a witness, or has interest at a hearing.

**23.4** A notice of protests filed and approximate hearing times will be posted on the Protest Notice Board within 15 minutes after the expiration of the Protest Time Limit. This posting constitutes the notice required for Race Committee and/or Protest Committee protests required under RRS 61.1 (b). This changes RRS 61.1 (b).

**23.5** If the RC posts a list of boats scored OCS or ZFP on the Protest Notice Board before the Protest Time Limit, a request for redress based on the posted score shall be made no later than fifteen (15) minutes after the Protest Time Limit. This changes RRS 62.2

**23.6** On Sunday, a request for redress from a jury decision shall be delivered no later than fifteen (15) minutes after the decision was posted. This changes RRS 62.2.

**23.7** The penalty for breaking S.I. 3, 11, or 21 may, at the discretion of the Protest Committee, be less severe than DSQ.

## **24. RADIOS**

**24.1** The Race Committee will not respond to transmissions from competitors except to acknowledge retirements, protests, penalties reported or taken, or requests for emergency assistance.

**24.2** Race Committee courtesy broadcasts of its intentions, courses to be sailed, flag sequences, postponement updates etc. are as a courtesy only and in no way relieve competitors of their responsibility to monitor and respond to Race Committee flags and signals.

**24.3** Failure of the RC to make a broadcast, the timing of a broadcast, or failure of a boat to hear a broadcast, shall not be grounds for redress under RRS 62.1(a).

## **25. COMMERCIAL TRAFFIC**

**25.1** A boat shall not exercise right of way over, cross in close proximity to, or interfere with reasonable transit of the race area by military vessels, commercial freighters, tugs and tows, or other commercial vessels that are unable to respond readily. Any boat protested under this rule shall have the burden of proving that she did not interfere with such vessel. Boats must take evasive action well in advance of any potentially dangerous situation.

**25.2** If a boat without way in a ship channel infringes RRS 42.1 by using her engine to clear the channel, she may continue racing but, at the finish line, must inform the Race Committee of the incident and, at a subsequent hearing, must satisfy the Protest Committee that she gained no advantage by using her engine. RRS 62.1 is changed to allow consideration of this request.

## **26. AWARDS**

**26.1** Appropriate daily and series awards will be given to boats in each fleet.

**26.2** A Boat of the Day Flag will be presented each evening to the outstanding boat in each Division.

**26.3** RRS 56 is changed to allow boats to fly these Boat of the Day flags while racing.

**26.4** A Boat of the Regatta award, the Black Seal Cup, will be presented to the most outstanding boat in the regatta at the awards ceremony Sunday afternoon.

## **27. MEDIA RIGHTS**

By their entry, competitors give absolute right and permission for any photograph or video footage of themselves or the boat they are sailing to be published in any media the regatta organizers see fit.

## **28. DISCLAIMER OF LIABILITY**

**28.1** Competitors participate in the regatta entirely at their own risk. See rule 4, Decision to Race. The organizing authority will not accept any liability for material damage or personal injury or death sustained in conjunction with or prior to, during, or after the regatta.

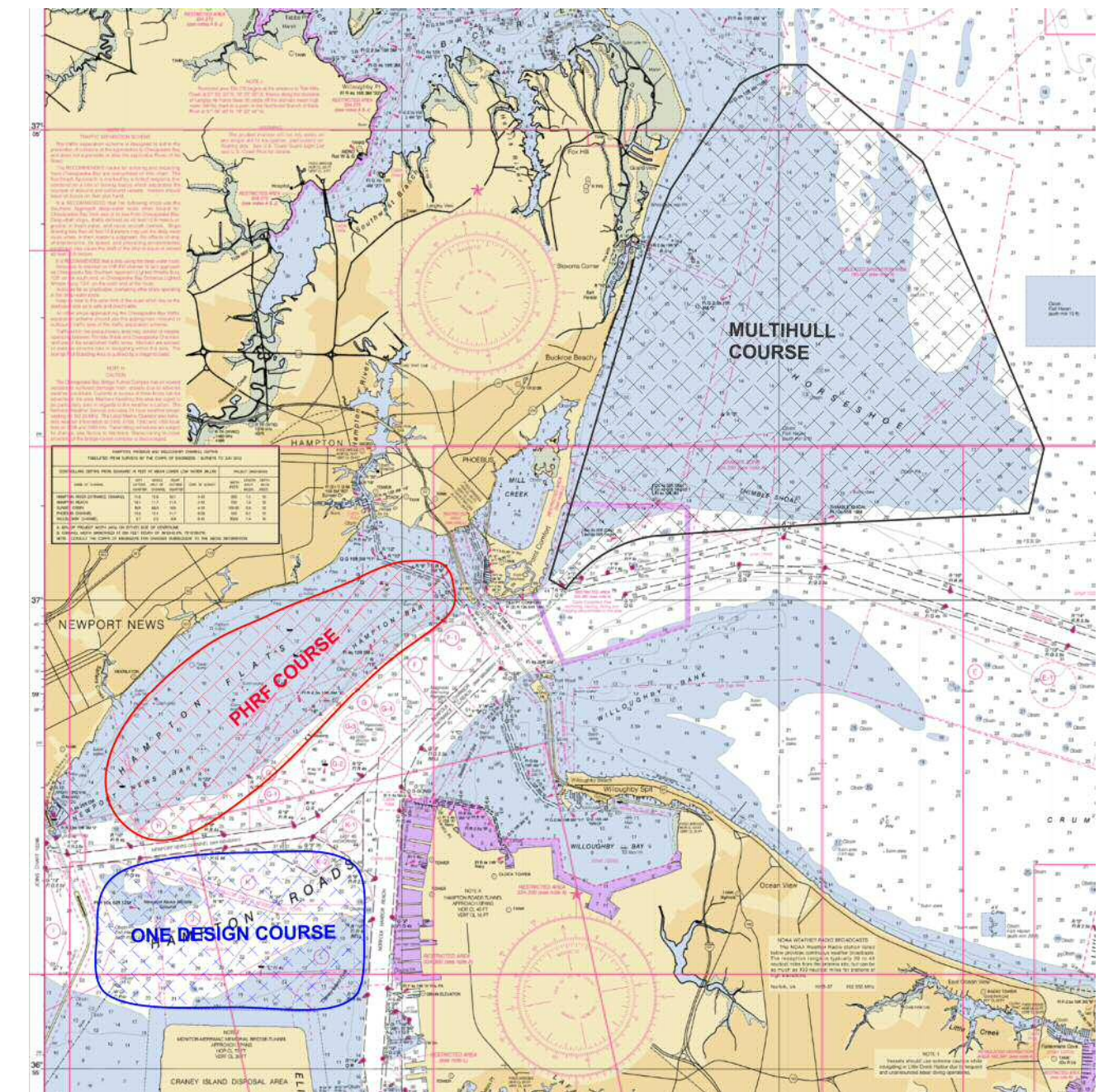
**28.2** The safety of a boat and its crew is the sole responsibility of the Skipper who must ensure that the boat is sound, seaworthy, and manned by a competent crew of appropriate number.

## **29. REGATTA CONTACTS AND OFFICIALS:**

Regatta Chairman	=	Jack Pope
Registration & Info	=	Lin McCarthy (757) 850-4225 <a href="mailto:mcbear@earthlink.net">mcbear@earthlink.net</a>
Principal Race Officer	=	John McCarthy
One-Design Course	=	Brian Deibler
Cruising/Multihull	=	Tom Connors
Official Scorer	=	Leanne Cranfill



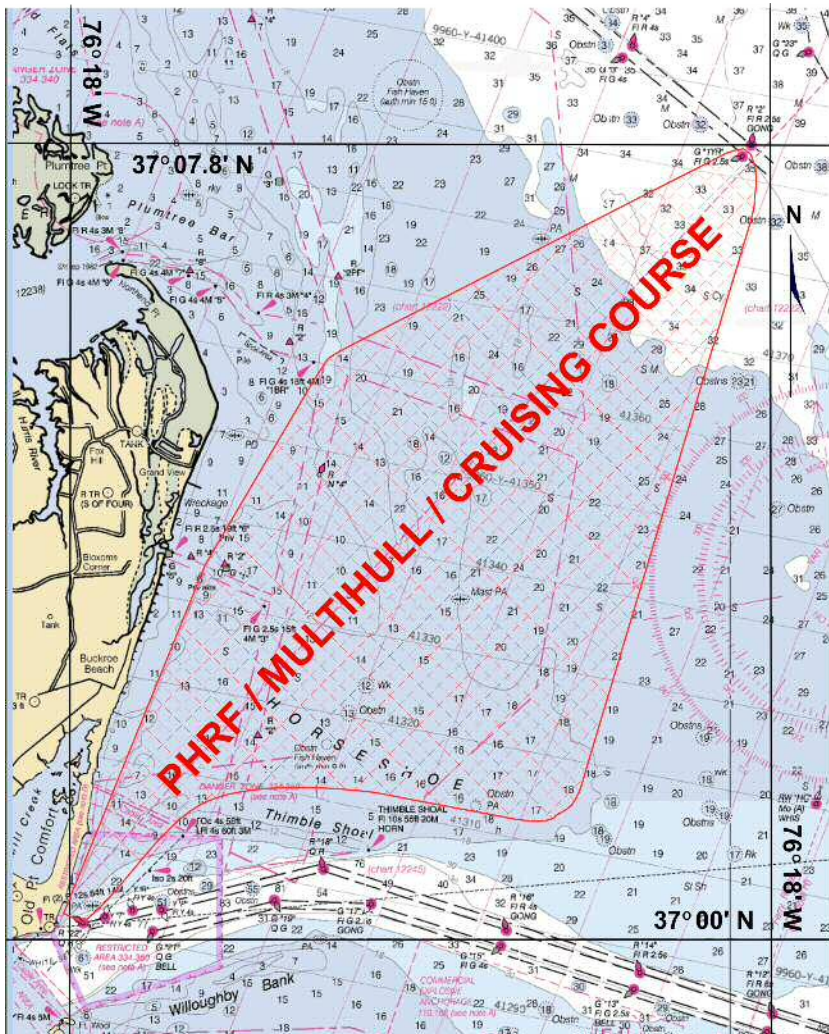
## RACING AREA - FRIDAY, JUNE 3, 2016



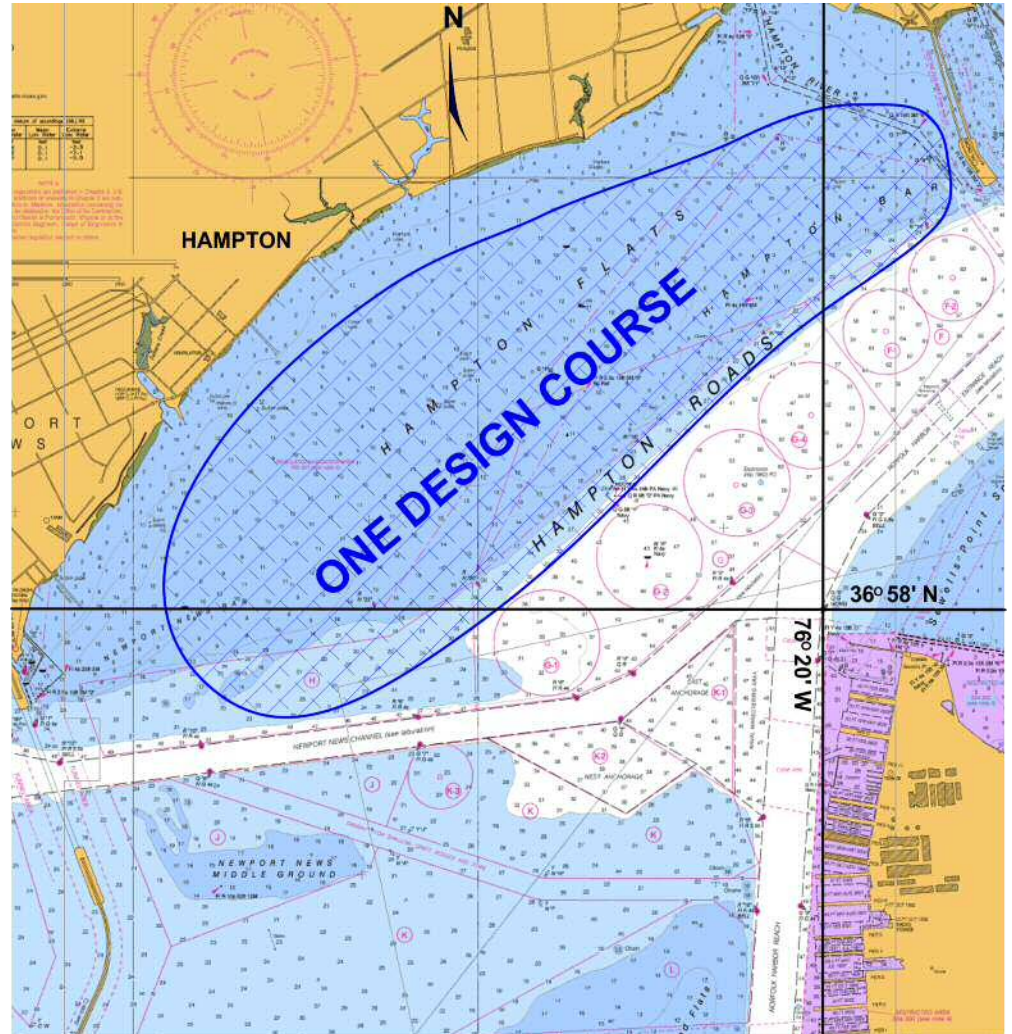


APPENDIX A  
RACING AREA - SATURDAY, JUNE 4, 2016

Chesapeake Bay Horseshoe Racing Area



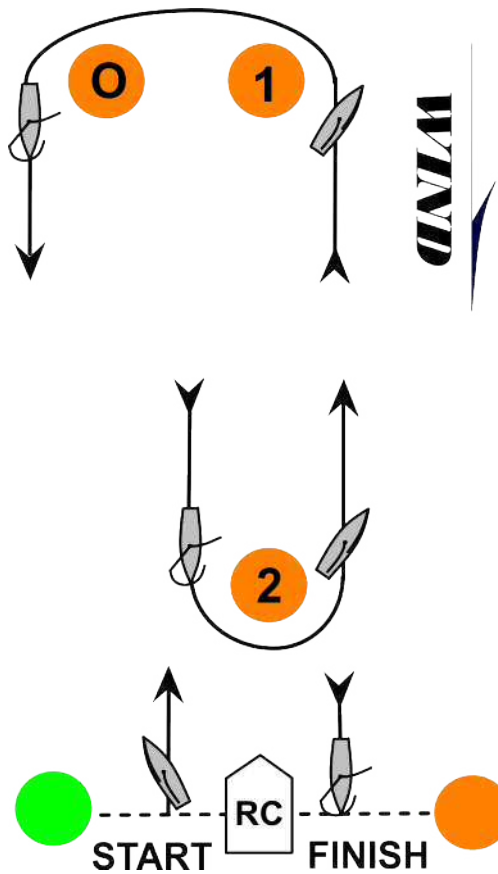
Hampton Roads Hampton Flats Racing Area





[illegible]

**APPENDIX B  
ONE DESIGN COURSE**



\*The Course to be sailed will be displayed from the RC Signal Boat prior to the Warning Signal.

- \* The number of windward/leeward laps to be sailed will be shown in **RED**.
- \* The approx. bearing and distance from the Signal Boat to Mark 1 will be shown in **BLACK**.

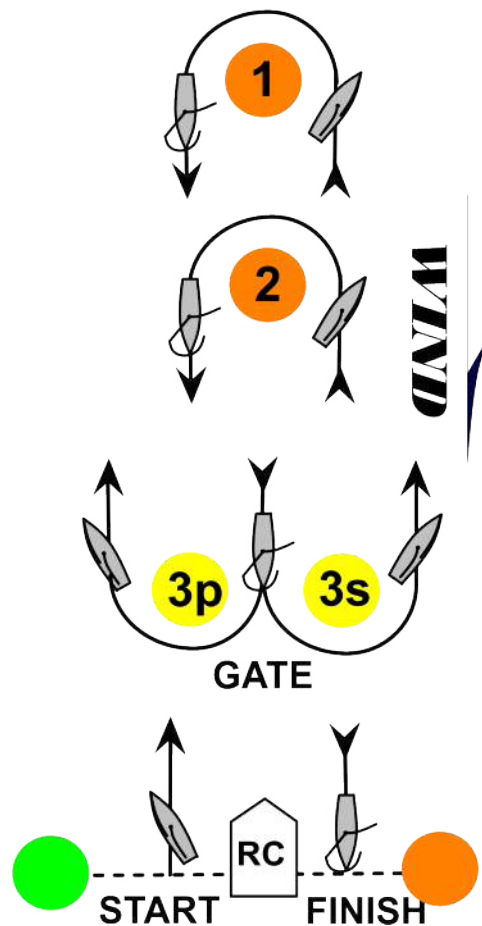
\*A Weather Offset Mark (O) will be set approx. 175'-200' to the left of Mark 1.

\*Mark 2 (Leeward Mark) will be set approx. 600' to weather of the Start/Finish Line.

\*All marks will be left to port.

\*The Finish Line will be on the opposite side of the RC Signal Boat from the Starting Line.

## APPENDIX C PHRF COURSE



\*\*The course to be sailed will be displayed from the RC Signal Boat prior to the Warning Signal.

- The number of windward/leeward laps to be sailed will be shown in **RED**.
- The approx. bearing and distance from the Signal Boat to Mark 1 will be shown in **BLACK**.
- Mark 2 will be set on the same bearing but approx. 900' to leeward of Mark 1.
- The top line of the course board will indicate the fleets that shall use Mark 1.
- The bottom line of the course board will indicate the fleets that shall use Mark 2.

\*\*If the course is changed after the start:

- Only one Change Mark will be set. All boats shall use the one **YELLOW** Change Mark.
- Unless otherwise signaled, the Change Mark will be set at approx. the same distance as Mark 2.

\*\*All marks (except the leeward gate) shall be left to port.

\*\*The Leeward Gate (Marks 3s & 3p) will be set approx. 600' to weather of the Start/Finish Line.

- If only one Leeward Mark is present, boats shall round it to port.
- At the discretion of the RC, the angle of the gate may be adjusted without signal

\*\*The Finish Line will be on the opposite side of the RC Signal Boat from the Starting Line.

**APPENDIX D (Page 1 of 2)**

**SATURDAY DISTANCE RACE IN BAY - 2016**

**MARK DESCRIPTIONS AND LOCATIONS**

**Starting Mark = Day Beacon R "2" (Off Buckroe)      37 01.98 N   76 15.75 W**

**Drop Mark 1 ("D1")      **Orange Cylinder**      37 05.18 N   76 12.75 W**

**Drop Mark 2 ("D2")      **Orange Cylinder**      37 02.22 N   76 10.76 W**

**RW Mo (A) WHIS "HC" (Tail of Horseshoe)      37 01.32 N   76 08.97 W**

**Drop Mark 3 ("D3")      **Yellow Inflatable**      37 03.20 N   76 12.65 W**

**Mark "X"      FI G 2.5s "3" (Salt Ponds Entrance)      37 03.23 N   76 15.65 W**

**Finish Mark = R "22"      (Off Fort Monroe seawall)   37 00.15 N   76 17.87 W**

-----  
**COURSE DESCRIPTIONS**

**Course A (PHRF-A1, A2, and Multihull) :**

**Start at R "2" -- "D1" (Star) -- "Mo (A)" (Star) -- "X" (Port) -- Finish at R "22" (18.1 nm)**

**Course B (PHRF-B) :**

**Start at R "2" -- "D1" (Star) -- "D2" (Star) -- "X" (Port) -- Finish at R "22" (15.0 nm)**

**Course C (PHRF-C, Non-Spin, and Cruising) :**

**Start at R "2" -- "D1" (Star) -- "D3" (Star) -- "X" (Port) -- Finish at R "22" (12.0 nm)**

-----  
**\*\* Lat/lons are approximate and not intended for navigation.**

**\*\* All boats start at Day Beacon R "2" off Buckroe.**

**\*\* Unless the course is shortened, all boats finish at R "22" at Fort Monroe.  
The finish line is between R "22" and an orange flag on the Ft Monroe seawall.**

**\*\* All RC radio communications will be via VHF-72, except when finishing.  
The Finish Line Team will monitor VHF-9 and may hail boats as they finish.  
They will respond only to emergency calls or reports of protests/redress.  
Boats should monitor VHF-9 while finishing and respond to RC requests.**

APPENDIX D (Page 2 of 2)

SATURDAY DISTANCE RACE (IF IN HARBOR) - 2016

**IF SATURDAY'S DISTANCE RACE IS RELOCATED TO THE HARBOR,**  
**BOATS SHALL SAIL THE COURSES SHOWN BELOW**

**\*\*Start/Finish Line for all fleets = 36 58.70 N 76 22.50 W (Hampton Flats)**

**\*\*Start/Finish Line is between the staff displaying an orange flag on the RC boat and a green inflatable cylinder.**

Mark "W"	Middle Ground Light	36 56.71 N	76 23.48 W
Mark "X"	Fl R 6s R "12" (Norf. Harbor Reach)	36 55.80 N	76 20.46 W
Mark "Z"	Fl R 2.5s R "8" (Norf. Harbor Reach)	36 57.03 N	76 20.37 W
Mark "O"	Fl R 4s R "10" (N News Channel)	36 57.36 N	76 23.60 W
Mark "M"	Fl R 4s R "8" (N News Channel)	36 57.50 N	76 22.35 W
Mark "C"	R N "14" (Hampton Bar)	36 59.77 N	76 19.40 W
Mark "J"	Fl R 4s R "2" (N News Channel)	36 58.12 N	76 20.53 W
Mark "Y"	Y N "H" (Shallow Draft Fwy.)	36 56.75 N	76 21.61 W

Courses to be Sailed by Each Fleet

Course A (PHRF-A and Multihull)

Start – W (port) – X (port) – O (star) – C (star) – Y (star) – Finish (17.3 nm)

Course B (PHRF-B)

Start – W (port) – X (port) – O (star) – J (star) – Y (star) – Finish (13.9 nm)

Course C (PHRF-C, Non-Spin, and Cruising)

Start – W (port) – Z (port) – M (star) – J (star) – Y (star) – Finish (11.6 nm)

**\*\*Lat/Lons are approximate and not intended for navigation.**

**\*\*All RC radio communications will be via VHF-72. This includes, start, finish, and any courtesy and/or emergency communications during the race.**

**\*\*Unless the course is shortened after the start, all boats will start and finish at:**

**36 58.70 N 76 22.50 W**



**APPENDIX E (Page 1 of 2)**  
**SUNDAY CRUISING & MULTIHULL COURSE - 2016**

**\*\*On Sunday, the Cruising and Multihull Fleets will do one middle distance race in the Bay.**

**\*\*Boats should rendezvous at the Start/Finish Line, which will be located at:**

**36 58.0 N      76 13.0 W    (approx. 2.8 nm NNW of Little Creek Inlet entrance)**

**\*\*Marks to be used will be:**

<u>MARK</u>	<u>LAT/LON</u>	
RW Mo (A) WHIS "HC"	37 01.3 N	76 08.9 W
Drop Mark "D"	37 00.2 N	76 10.6 W
"1LC", Q G	36 58.1 N	76 10.1 W
"2 FI R 2.5 s	36 56.5 N	76 10.8 W

---

**COURSE A (Cruising A & Multihull)**

**Start – Mo (A) (star) – "1LC" (star) – "2LC" (star) – Finish      (12.0 nm)**

**COURSE B (Cruising B)**

**Start – Drop "D" (star) – "1LC" (star) – "2LC" (star) – Finish      (9.0 nm)**

---

**\*\*The Start/Finish Mark will be a green inflatable cylinder.**

**\*\*The Race Committee may shorten the course at any mark.**

**\*\*The time limit Sunday is 1430. (See Instruction 20.4 and 20.5)**

**\*\*Lat/lons are approximate and not intended for navigation.**

**\*\*The Race Committee will communicate with the fleet on VHF-73.**



**APPENDIX E (Page 2 of 2)**

**\*\*\*IF RACING IS RELOCATED TO THE HARBOR ON SUNDAY,**  
**THE CRUISING AND MULTIHULL FLEETS WILL PROCEED AS FOLLOWS:**

**\*\*Rendezvous at R "4" at the mouth of the Hampton River.**

**\*\*All Cruising/Multihull fleets will sail the following course:**

<u>Mark</u>	<u>Location</u>	<u>Leave to</u>	<u>Lat/Lon</u>	
R "4"	Mouth of River	START	37 00.18 N	76 20.28 W
G "1"	Hampton Flats	PORT	36 59.12 N	76 21.60 W
R "12"	Norf. Har. Reach	PORT	36 55.80 N	76 20.46 W
R "2"	N News Channel	STAR	36 58.12 N	76 20.53 W
R N "14"	Hampton Bar	PORT	36 59.77 N	76 19.40 W
R "18"	Hampton Bar	STAR	36 58.78 N	76 21.07 W
R "2"	Hampton Bar	STAR	36 59.03 N	76 21.37 W
R "4"	Mouth of River	FINISH	37 00.18 N	76 20.28 W

**\*\*Length = Approx 12.7 nm**

**\*\*Start/Finish Line between staff displaying orange flag on RC boat and R "4".**

**\*\*Lat/lons are approximate and not intended for navigation.**

**\*\*The Race Committee will communicate with the fleet on VHF-73.**

## **SOUTHERN BAY RACE WEEK – 2016**

### **APPENDIX F (Page 1 of 2)**

#### **FLEET SPLITS, CLASS FLAGS, & ORDER OF STARTS**

**\*\*Below are shown Fleet Splits, Class Flags, & Order of Starts for each day of racing.**

**\*\*This information may be shown on a preliminary basis on the event website and/or posted in various places prior to the regatta. All such postings are unofficial and preliminary.**

**\*\*Only the information included in the final Regatta Sailing Instructions and posted Thursday on the Official Notice Board in the regatta tent is final.**

#### **FRIDAY RACING**

<b><u>Fleet</u></b>	<b><u>Ratings</u></b>	<b><u>Class Flag (on RC Boat)</u></b>	<b><u>Class ID (on backstay)</u></b>
---------------------	-----------------------	---------------------------------------	--------------------------------------

#### **PHRF COURSE - HARBOR**

<b>PHRF A1</b>	<b>Under 82</b>	<b>Code Flag "1"</b>	<b>Code Flag "1"</b>
<b>PHRF A2</b>	<b>83-109</b>	<b>Code Flag "9"</b>	<b>Code Flag "9"</b>
<b>PHRF B</b>	<b>110-151</b>	<b>Code Flag "6"</b>	<b>Code Flag "6"</b>
<b>PHRF C</b>	<b>Over 152</b>	<b>Code Flag "7"</b>	<b>Code Flag "7"</b>
<b>Non-Spin (2HS)</b>	<b>All Ratings</b>	<b>Code Flag "5"</b>	<b>Code Flag "5"</b>

#### **ONE-DESIGN COURSE - HARBOR**

<b>Viper 640</b>	<b>One Design</b>	<b>White Flag/Red Logo</b>	<b>White Ribbon</b>
<b>J-70</b>	<b>One-Design</b>	<b>Blue Flag/White Logo</b>	<b>Blue Ribbon</b>
<b>J-24</b>	<b>One-Design</b>	<b>Code Flag "U"</b>	<b>Code Flag "U"</b>

#### **MULTIHULL COURSE – BAY**

<b>Multihull</b>	<b>All Ratings</b>	<b>Yellow Flag</b>	<b>Yellow Ribbon</b>
------------------	--------------------	--------------------	----------------------

**APPENDIX F (Page 2 of 2)**

**SATURDAY RACING – BAY**

<b><u>Fleet</u></b>	<b><u>Ratings</u></b>	<b><u>Class Flag (on RC Boat)</u></b>	<b><u>Class ID (on backstay)</u></b>
<b>Multihull</b>	<b>All Ratings</b>	<b>Yellow Flag</b>	<b>Yellow Ribbon</b>
<b>PHRF A1</b>	<b>Under 82</b>	<b>Code Flag "1"</b>	<b>Code Flag "1"</b>
<b>PHRF A2</b>	<b>83-109</b>	<b>Code Flag "9"</b>	<b>Code Flag "9"</b>
<b>PHRF B</b>	<b>110-151</b>	<b>Code Flag "6"</b>	<b>Code Flag "6"</b>
<b>PHRF C</b>	<b>Over 152</b>	<b>Code Flag "7"</b>	<b>Code Flag "7"</b>
<b>Non-Spin (2HS)</b>	<b>All Ratings</b>	<b>Code Flag "5"</b>	<b>Code Flag "5"</b>
<b>Cruising A</b>	<b>TBA</b>	<b>White Flag</b>	<b>White Ribbon</b>
<b>Cruising B</b>	<b>TBA</b>	<b>Blue Flag</b>	<b>Blue Ribbon</b>

**ONE-DESIGN COURSE – HARBOR**

**Same as Friday**

-----

**SUNDAY RACING – ALL COURSES IN BAY**

**PHRF COURSE**

**Same as Friday**

**ONE-DESIGN COURSE**

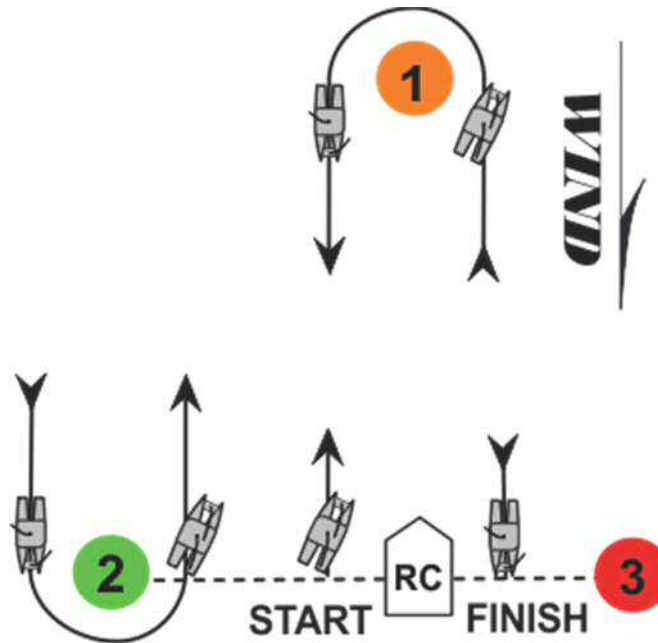
**Same as Friday & Saturday**

**MULTIHULL/CRUISING COURSE**

<b>Multihull</b>	<b>TBA</b>	<b>Yellow Flag</b>	<b>Yellow Ribbon</b>
<b>Cruising A</b>	<b>TBA</b>	<b>White Flag</b>	<b>White Ribbon</b>
<b>Cruising B</b>	<b>TBA</b>	<b>Blue Flag</b>	<b>Blue Ribbon</b>

## APPENDIX G

### MULTIHULL COURSE (Friday only)



**\*\* Mark 1 = Orange Weather Mark**

**\*\* Mark 2 = Green Start Mark / Leeward Mark**

**\*\* Mark 3 = Red Finish Mark**

- The course to be sailed will be displayed from the RC Signal Boat prior to Warning.
    - The number of windward/leeward laps to be sailed will be shown in **RED**
    - The bearing and distance from the Signal Boat to Mark 1 will be shown in Black
  - All marks will be left to PORT
  - The Finish Line will be on the opposite side of the Signal Boat from the Start Line
- \*\*\* The RC may signal a course change from their anchored position.**