



EDGARTOWN RACE WEEKEND

'ROUND-THE-SOUND RACES

June 15-16, 2023
The Edgartown Yacht Club
Edgartown, Massachusetts

SAILING INSTRUCTIONS

Addendum 1

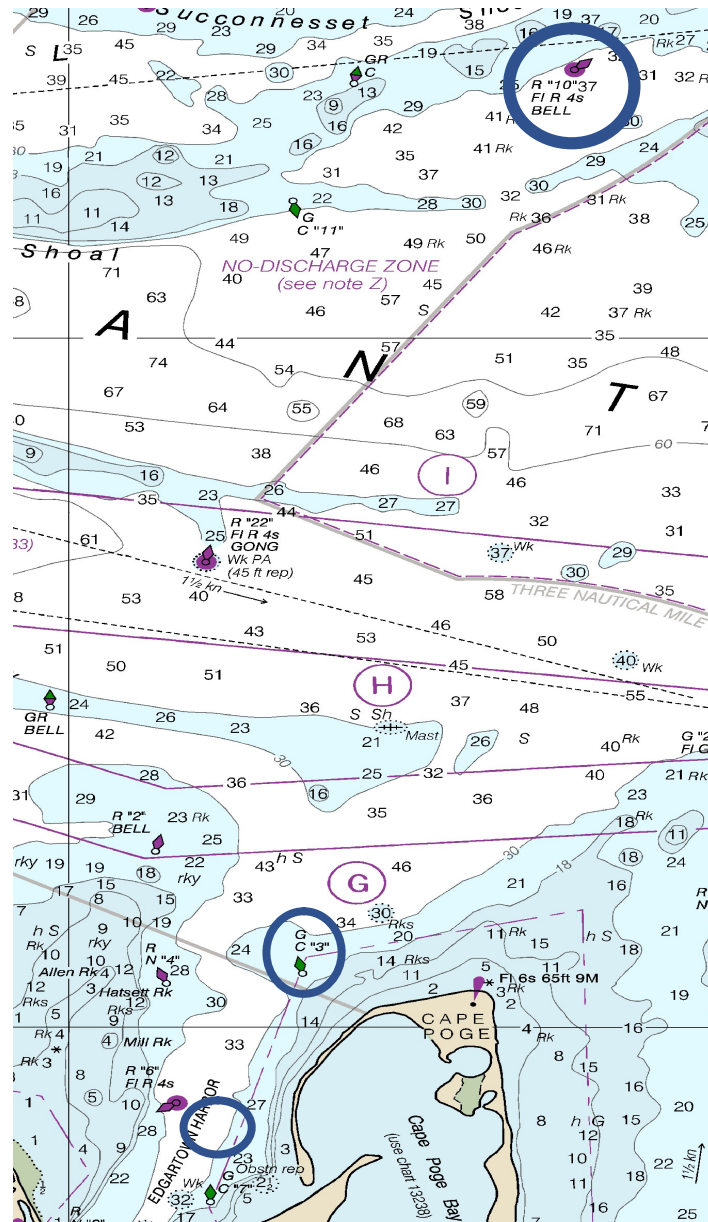
Courses

1 COURSES

Courses for each class will be posted each day on the Official Notice Board no later than 0900 and will be announced by the Signal Boat on Channel 72 prior to the first warning signal. Additional announcements may be made at the request of any yacht prior to the first warning signal.

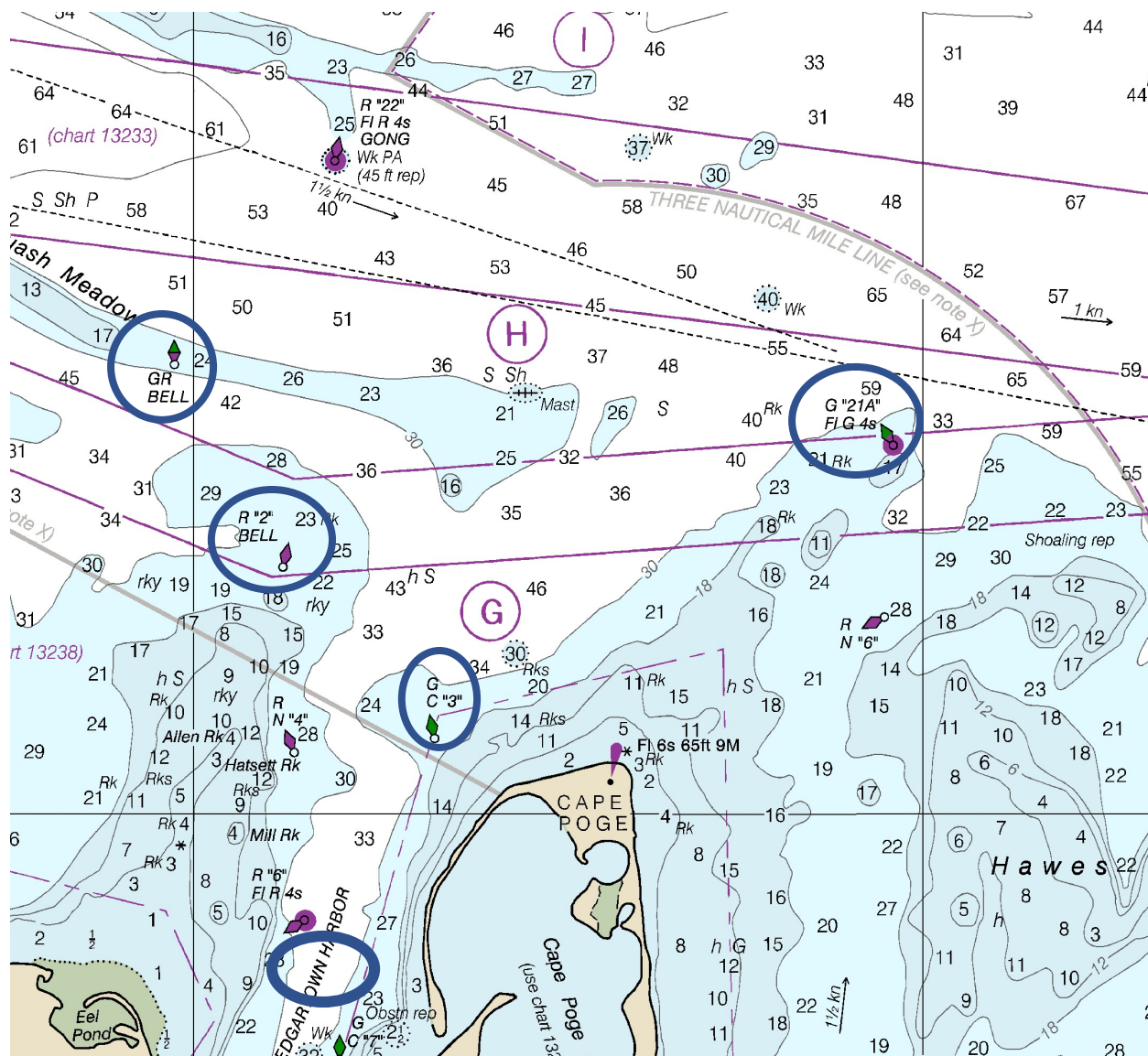
Note: Only those government marks identified as marks of the course are required to be observed.

ROUND-THE-SOUND COURSE 1 (approx. 16 NM)



START AT SIGNAL BOAT SE OF EDGARTOWN HARBOR R "6"
 LEAVE EDGARTOWN HARBOR G "3" TO STARBOARD
 LEAVE L'HOMMEDIEU SHOAL R "10" TO PORT
 LEAVE EDGARTOWN HARBOR G "3" TO PORT
 FINISH AT SIGNAL BOAT SE OF EDGARTOWN HARBOR R "6"

ROUND-THE-SOUND COURSE #2 PORT (approx. 11 NM)



START AT SIGNAL BOAT SE OF EDGARTOWN HARBOR R "6"

LEAVE EDGARTOWN HARBOR G "3" TO STARBOARD

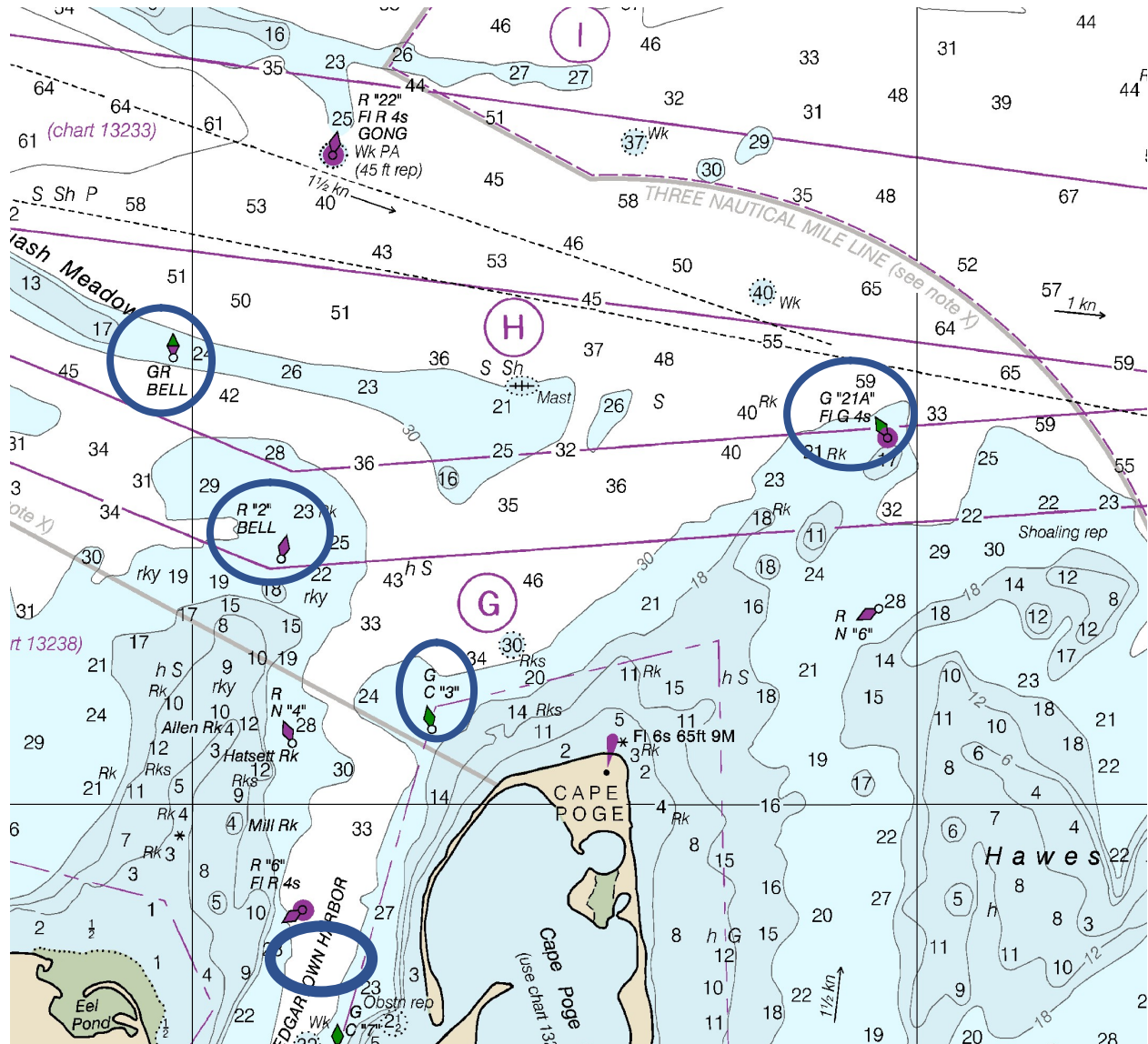
LEAVE NANTUCKET SOUND MAIN SHIP CHANNEL G "21A" TO PORT

LEAVE SQUASH MEADOW "GR" TO PORT

LEAVE EDGARTOWN HARBOR R "2" TO STARBOARD

FINISH AT SIGNAL BOAT SE OF EDGARTOWN HARBOR R "6"

ROUND-THE-SOUND COURSE #2 STARBOARD (approx. 11 NM)



START AT SIGNAL BOAT SE OF EDGARTOWN HARBOR R "6"

LEAVE EDGARTOWN HARBOR R "2" TO PORT

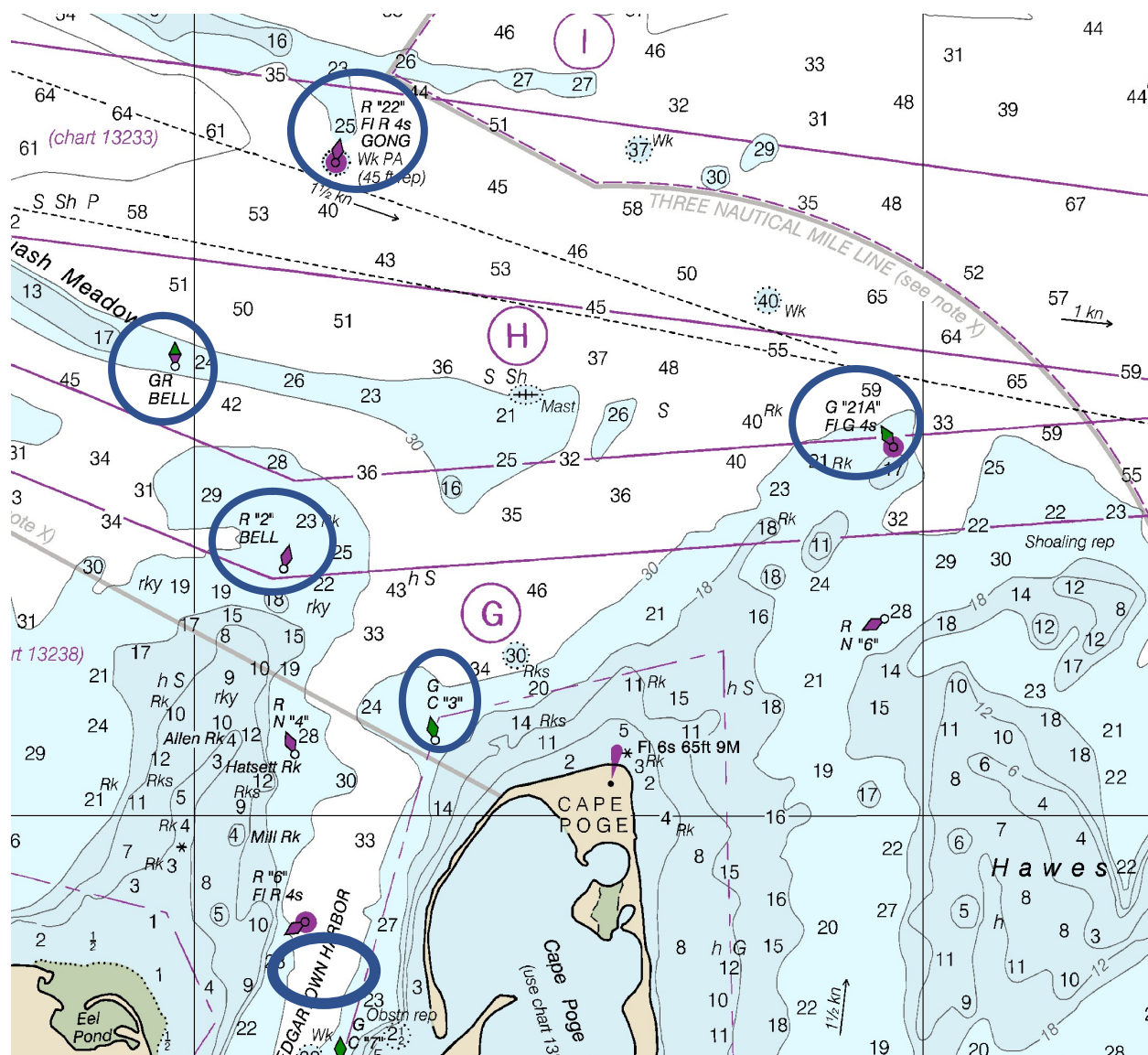
LEAVE SQUASH MEADOW "GR" TO STARBOARD

LEAVE NANTUCKET SOUND MAIN SHIP CHANNEL G "21A" TO STARBOARD

LEAVE EDGARTOWN HARBOR G "3" TO PORT

FINISH AT SIGNAL BOAT SE OF EDGARTOWN HARBOR R "6"

ROUND-THE-SOUND COURSE #3 PORT (approx. 12 NM)



START AT SIGNAL BOAT SE OF EDGARTOWN HARBOR R "6"

LEAVE EDGARTOWN HARBOR G "3" TO STARBOARD

LEAVE NANTUCKET SOUND MAIN SHIP CHANNEL G "21A" TO PORT

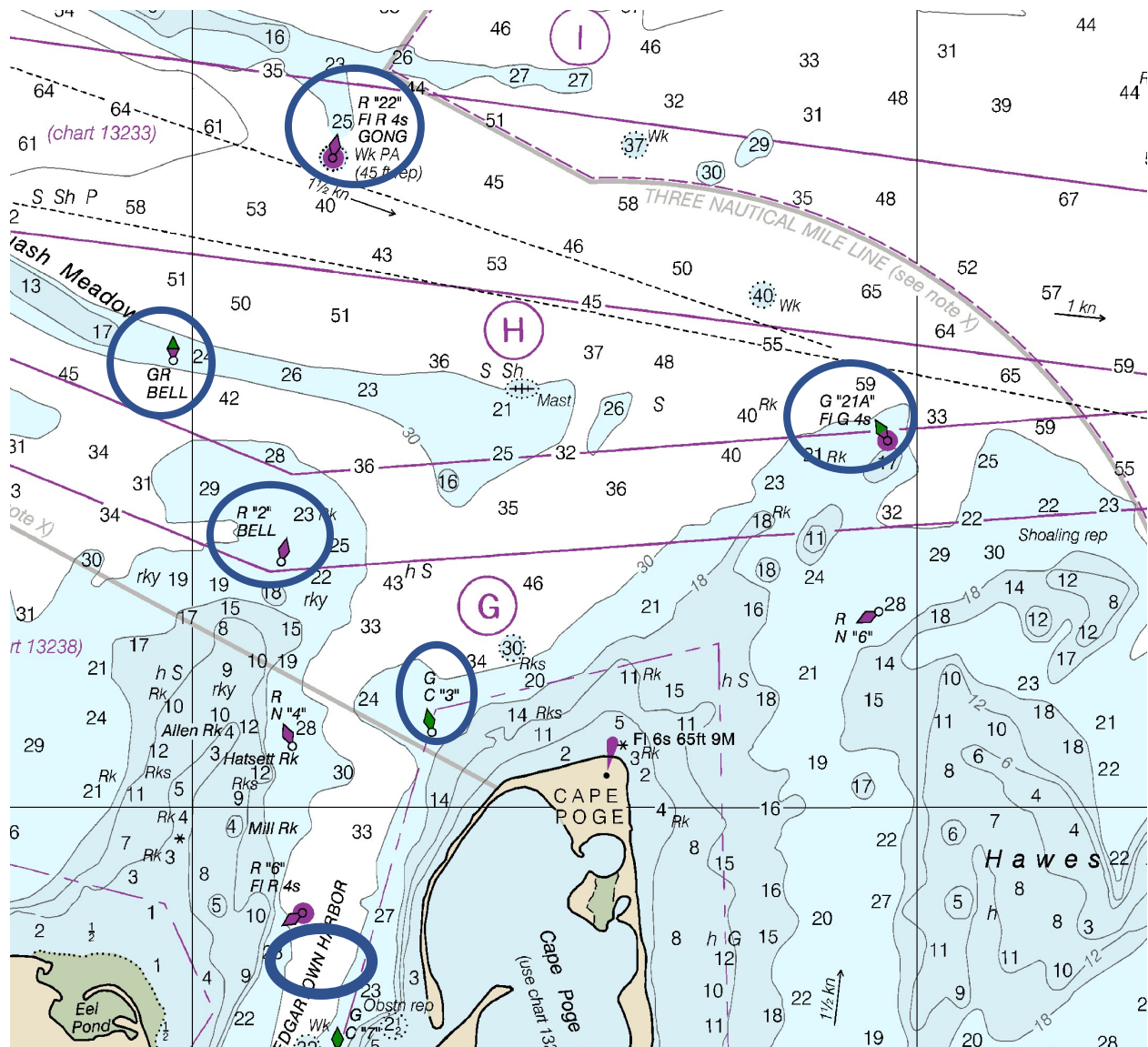
LEAVE NANTUCKET SOUND MAIN SHIP CHANNEL R "22" TO PORT

LEAVE SQUASH MEADOW "GR" TO PORT

LEAVE EDGARTOWN HARBOR R "2" TO STARBOARD

FINISH AT SIGNAL BOAT SE OF EDGARTOWN HARBOR R "6"

ROUND-THE-SOUND COURSE #3 STARBOARD (approx. 12 NM)



START AT SIGNAL BOAT SE OF EDGARTOWN HARBOR R "6"

LEAVE EDGARTOWN HARBOR R "2" TO PORT

LEAVE SQUASH MEADOW "GR" TO STARBOARD

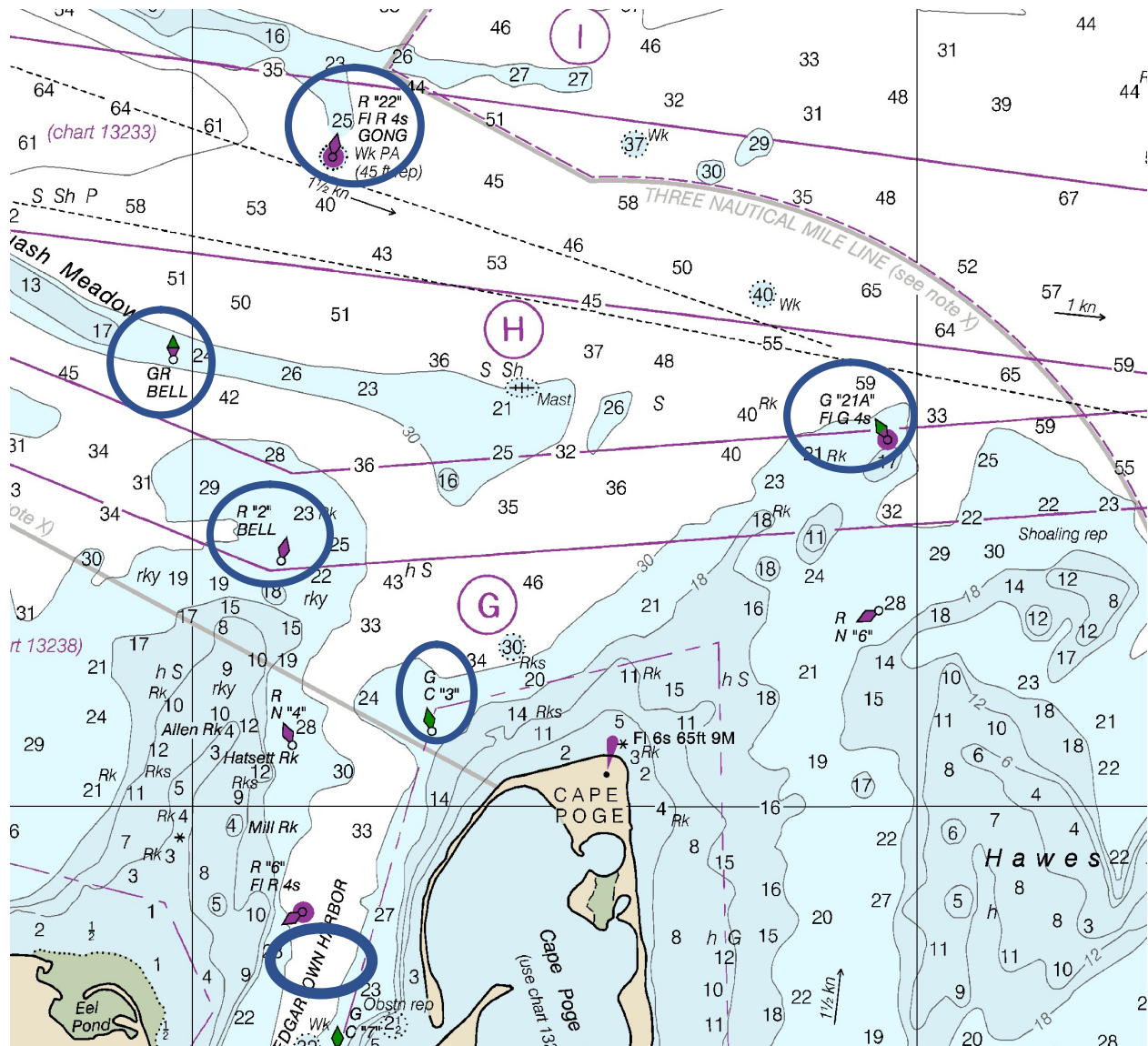
LEAVE NANTUCKET SOUND MAIN SHIP CHANNEL R "22" TO STARBOARD

LEAVE NANTUCKET SOUND MAIN SHIP CHANNEL G "21A" TO STARBOARD

LEAVE EDGARTOWN HARBOR G "3" TO PORT

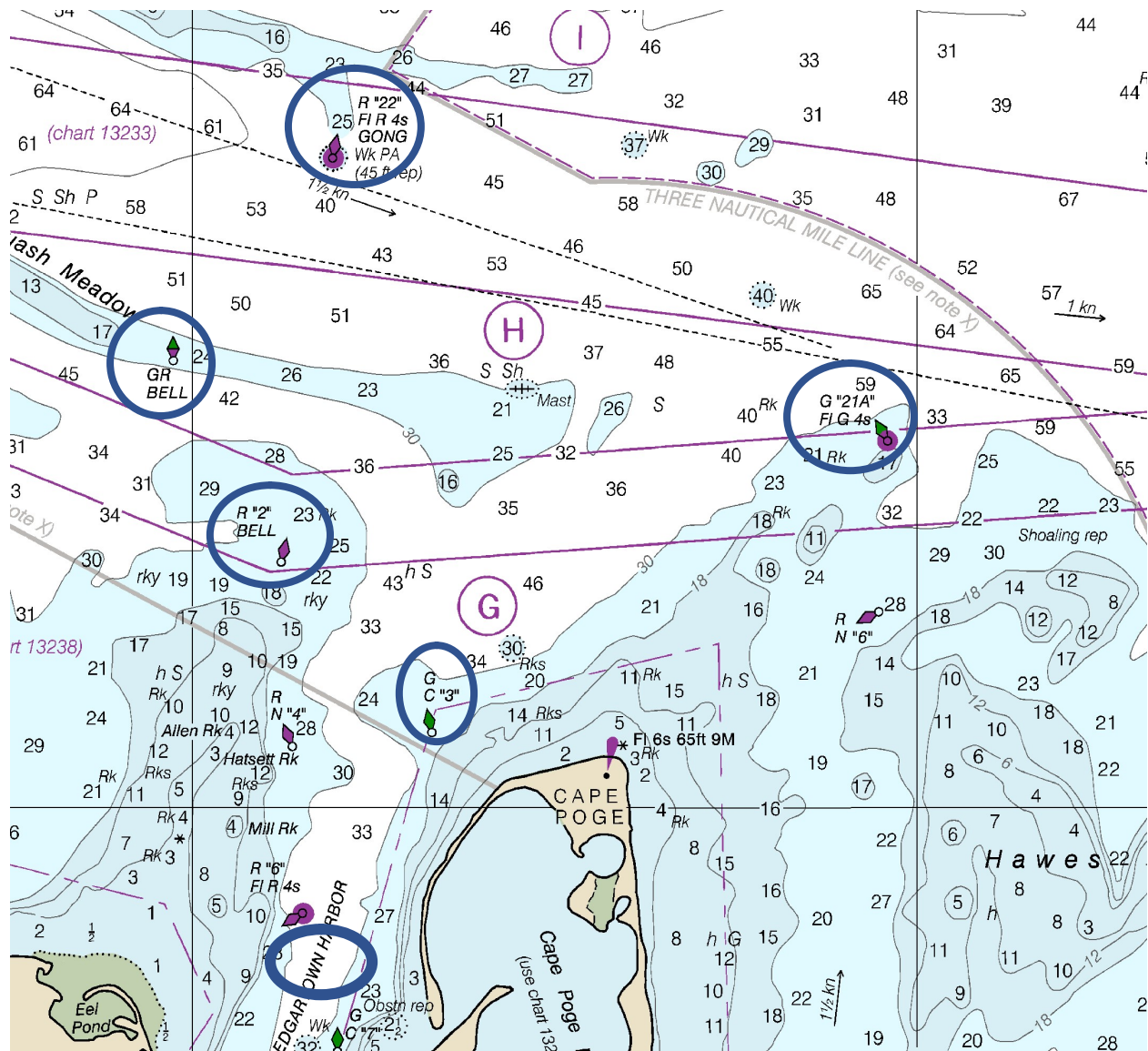
FINISH AT SIGNAL BOAT SE OF EDGARTOWN HARBOR R "6"

ROUND-THE-SOUND COURSE #4 PORT (approx. 19 NM)



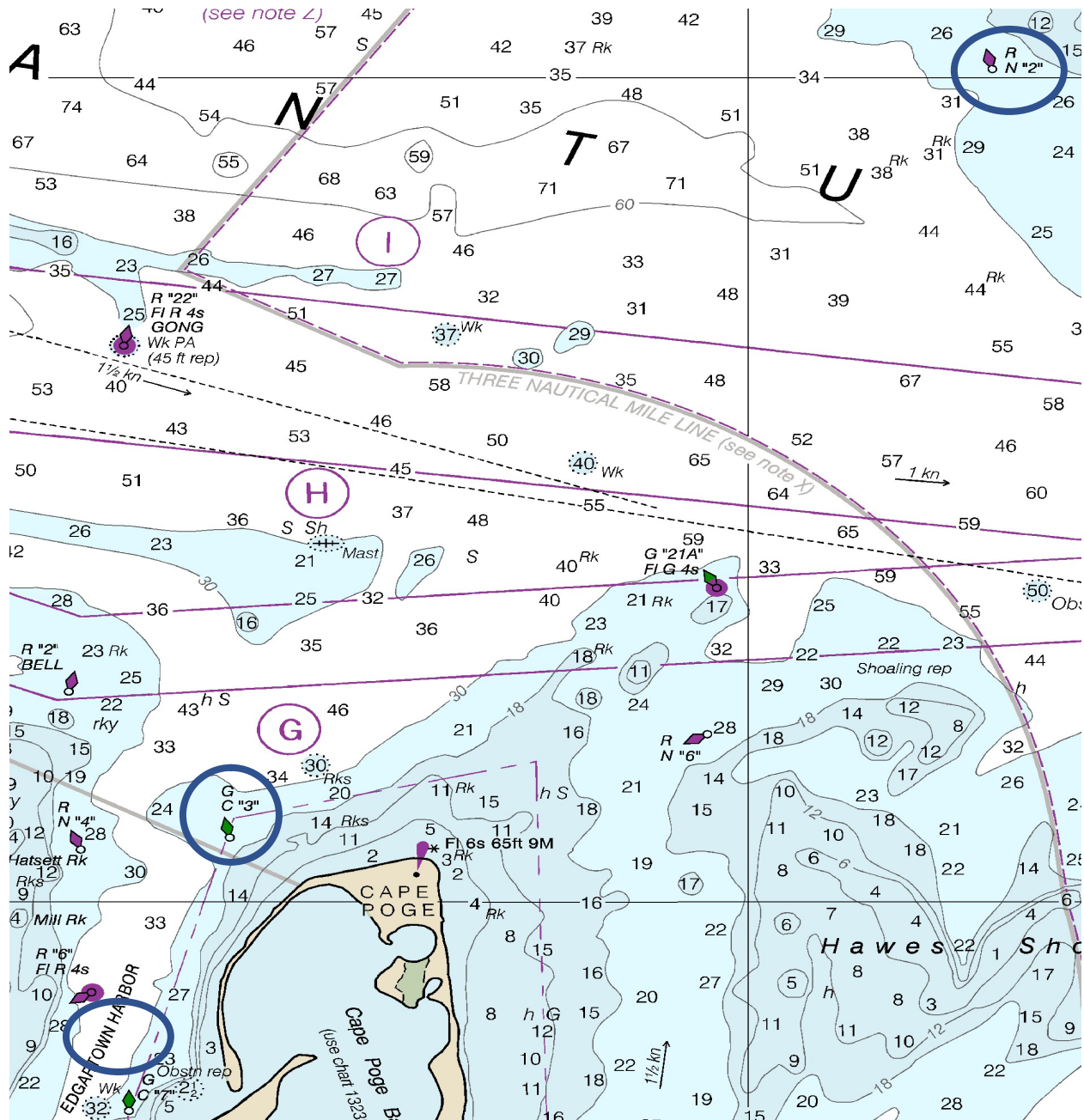
START AT SIGNAL BOAT SE OF EDGARTOWN HARBOR R "6"
 LEAVE EDGARTOWN HARBOR G "3" TO STARBOARD
 LEAVE NANTUCKET SOUND MAIN SHIP CHANNEL G "21A" TO PORT
 LEAVE NANTUCKET SOUND MAIN SHIP CHANNEL R "22" TO PORT
 LEAVE SQUASH MEADOW "GR" TO PORT
 LEAVE NANTUCKET SOUND MAIN SHIP CHANNEL G "21A" TO PORT
 LEAVE SQUASH MEADOW "GR" TO PORT
 LEAVE EDGARTOWN HARBOR R "2" TO STARBOARD
 FINISH AT SIGNAL BOAT SE OF EDGARTOWN HARBOR R "6"

ROUND-THE-SOUND COURSE #4 STARBOARD (approx. 19 NM)



START AT SIGNAL BOAT SE OF EDGARTOWN HARBOR R "6"
 LEAVE EDGARTOWN HARBOR R "2" TO PORT
 LEAVE SQUASH MEADOW "GR" TO STARBOARD
 LEAVE NANTUCKET SOUND MAIN SHIP CHANNEL R "22" TO STARBOARD
 LEAVE NANTUCKET SOUND MAIN SHIP CHANNEL G "21A" TO STARBOARD
 LEAVE SQUASH MEADOW "GR" TO STARBOARD
 LEAVE NANTUCKET SOUND MAIN SHIP CHANNEL G "21A" TO STARBOARD
 LEAVE EDGARTOWN HARBOR G "3" TO PORT
 FINISH AT SIGNAL BOAT SE OF EDGARTOWN HARBOR R "6"

ROUND-THE-SOUND COURSE #5 (approx. 15 NM)



START AT SIGNAL BOAT SE OF EDGARTOWN HARBOR R "6"
 LEAVE EDGARTOWN HARBOR G "3" TO STARBOARD
 LEAVE HORSESHOE SHOAL N "2" TO PORT
 LEAVE EDGARTOWN HARBOR G "3" TO PORT
 FINISH AT SIGNAL BOAT SE OF EDGARTOWN HARBOR R "6"