

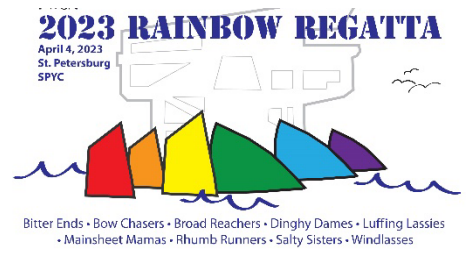


RAINBOW REGATTA

APRIL 3-4, 2023

ORGANIZING AUTHORITY: Florida Women's Sailing Association and Salty Sisters

HOSTED BY SALTY SISTERS OF ST. PETERSBURG YACHT CLUB, ST. PETERSBURG, FL



SAILING INSTRUCTIONS

1. RULES

- 1.1. The regatta will be governed by the *rules* as defined in *The Racing Rules of Sailing*, including Appendix V (Alternative Penalties).
- 1.2. If there is a conflict between the NOR and SIs, the SIs will take precedence. The US prescriptions to RRS 60.1 and 60.2 will not apply.

2. NOTICES TO COMPETITORS

- 2.1 Notices to competitors will be posted on the official notice board located at the website yachtscoring.com. An unofficial notice board may be set up at the launch site.
- 2.2 Unofficial "race committee actions" may be broadcast on VHF channel 05 for the Opti/pram course and channel 63 for the Sunfish as a courtesy to coaches and spectators.

3. CHANGES TO SAILING INSTRUCTIONS

- 3.1 Any change to the sailing instructions will be posted before 0830 on the day it will take effect, except that any change to the schedule of races will be posted by 1800 on the day before it will take effect.
- 3.2 Oral changes to the sailing instructions between races may be communicated to each boat per RSS 90.2(c) when the Signal boat raises Flag L, instructing boats to come within hail. Each boat shall sail by, hail her sail number and acknowledge she is aware of the change.

4. SIGNALS MADE ASHORE

- 4.1. Signals made ashore will be displayed from a pole hoisted at the end of the concrete jetty at North Shore Park.
- 4.2. When flag AP is displayed ashore, '1 minute' is replaced by 'not less than 45 minutes' in the race signal. This changes Race Signal AP.
- 4.3. [SP][DP] Flag D over Yellow with one sound indicates Harbor Launch for Sunfish. Flag D over Gray with one sound indicates Harbor Launch for Optis and prams. Boats shall not leave the launch venue until this signal is made. The warning signal will not be made before the scheduled time or less than 45 minutes after flag D over Yellow or Gray is displayed.

5. SCHEDULE OF RACES

Monday, April 3	Practice race	1400
Tuesday, April 4	Skippers Meeting	0900
	First Scheduled Warning	1030
	No warning after this time	1500

6. RACING AREAS and MARKS

- 6.1 The racing areas will be east of the St. Petersburg Pier on Tampa Bay.

6.2 See Attachment A.

6.3

Marks for the pram/IOD course	Marks for the Sunfish course
WW, LW, offset, jibe yellow shapes	WW, LW, offset, jibe orange balls
Finish orange ball	Finish yellow can
Change Orange shape	Change Green shape

7. CLASS FLAGS

- 7.1 Optimis and prams will use an Optimist logo on a white background.
Sunfish will use a Sunfish logo on a white background.

8. COURSES

- 8.1 The diagrams in Attachment B show the possible courses.
8.2 The course will be posted on the stern of the signal boat no later than the warning signal.

9. THE START

- 9.1 Races will be started in accordance with RRS 26.
9.2 To alert boats that a race or sequence of races will begin, the orange flag will be displayed with one sound signal at least 5 minutes before a warning signal is made.
9.3 The starting line will be between a staff displaying an orange flag on the race committee signal vessel at the starboard end and either (a) the course side of a starting mark or (b) a staff displaying an orange flag on a vessel at the port end. On the Sunfish course, the race committee may set a 'guide buoy,' a small orange ball, near the middle of the starting line. This 'guide buoy' is NOT a mark of the course.
9.4 On the pram/Opti circle only, when an individual recall is signaled, the race committee will attempt to hail boats that are OCS. The timing, order or omission of such hails or the failure of a boat to hear a hail will not be considered an improper action or omission by the race committee. This changes RRS 62.1(a). Individual recalls will not be hailed on the Sunfish race circle.
9.5 A boat starting five minutes after her starting signal will be scored Did Not Start without a hearing. This changes RRS A4, RRS A5.1 and A5.2.

10 TO CHANGE A LEG OF THE COURSE

- 10.1 To change the next leg of the course, the race committee will lay a new mark (or move the finishing line) and remove the original mark as soon as practical. Race committee may adjust the course bearing of the next leg of the course by up to 10 degrees without signal. This changes RRS 33.
10.2 Individual gate marks may be moved (without signal) to maintain the configuration of the course.

11 THE FINISH

- 11.1 The finishing line will be between a staff displaying a blue flag on a race committee boat and the course side of the finishing mark.

12 TIME LIMITS

- 12.1 The time limit for the first boat in each race is 50 minutes.
12.2 Boats still racing more than 20 minutes after the first boat sails the course and finishes will be scored TLE without a hearing and will receive two more points than the number of finishers. This changes RRS 35, 63.1, A4, and A5.

13 SCORING

- 13.1 A boat's score shall be total of all her race scores with no races excluded. This changes RRS Appendix A2.

- 13.2 Three races are scheduled.
- 13.3 One completed race constitutes a regatta.

14 PROTESTS AND REQUESTS FOR REDRESS

- 14.1 Protest forms are available at yachtscoring.com and at the Regatta desk at North Shore Park. Protests shall be delivered there within 30 minutes after the race committee finish boat docks. The docking time will be posted on the Official Notice Board.
- 14.2 Hearing notices will be posted no later than 15 minutes after the protest time limit to inform competitors of hearings in which they are parties or named as witnesses. Protests will be heard in the approximate order of receipt at the designated jury area.

15 SAFETY

- 15.1 Prior to the warning signal for the first race, each Opti or pram shall sail by the race committee signal boat and hail her sail number. Competitors who fail to check in will be given a standard penalty of 2 points added to the first race of the day that she sails, without a hearing. This changes RRS 63.1. Sunfish will not have on-the-water check in.
- 15.2 A boat retiring from a race or leaving the racing area early shall promptly notify the race committee either by hail or by phone to the regatta chair, Jennifer Parramore, 727-455-5314.
- 15.3 Competitors shall wear a properly secured USCG approved personal flotation device with an attached whistle at all times while afloat, except briefly while changing clothes. Inflatable personal flotation devices are not allowed.

16 TIME LIMITS AND TARGET TIMES

Mark 1 Time	Race Target Time	Finishing Window	Race Time Limit
15 minutes	30 Minutes	20 Minutes	50 Minutes

17 SUPPORT BOATS

- 17.1 All spectator and coach boats shall stay at least 50 yards from racing boats and all marks. Failure to comply may result in a discretionary penalty for all sailing clubs associated with the spectator/coach boats. Boats may be asked to assist on the course by the race committee.
- 17.2 All outboard-equipped support vessels shall be equipped with a functioning engine safety cut-out switch (kill switch) which shall remain attached to the support person (operator) at all times when the engine is on.

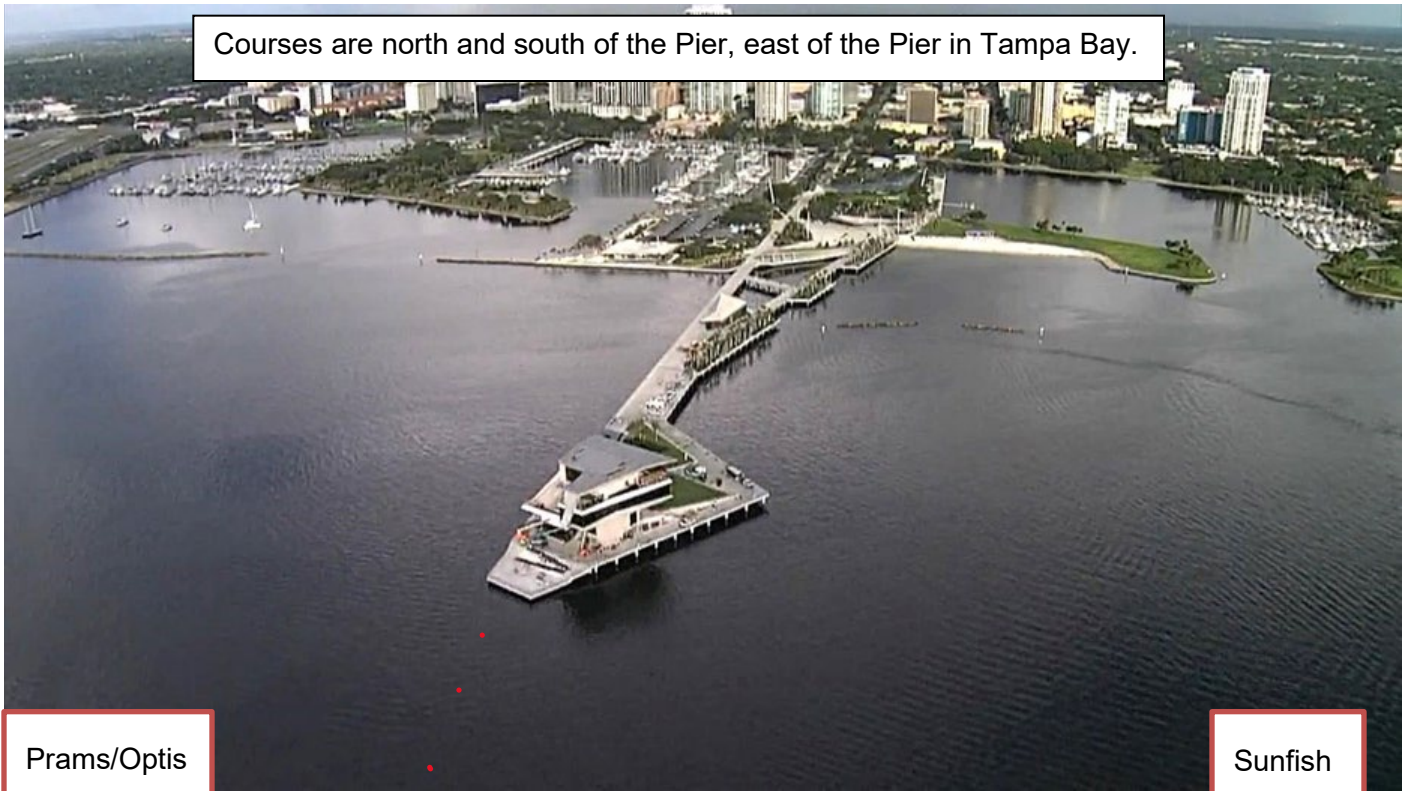
18 ELECTRONIC COMMUNICATIONS

- 18.1 Use of any electronic communications device, including cellular phones, while racing is prohibited.

19 DISCLAIMER OF LIABILITY

Sailing is an activity that has an inherent risk of damage and injury. Competitors in this event are participating entirely at their own risk. See rule 3, Decision to Race. The race organizers (organizing authority, race committee, jury, host club, sponsors or any other organization or official) will not be responsible for damage to any boat or other property or the injury to any competitor, including death, sustained because of participation in this event. By participating in this event each competitor agrees to release race organizers from all liability associated with such competitor's participation in this event fully permitted by law.

Attachment A



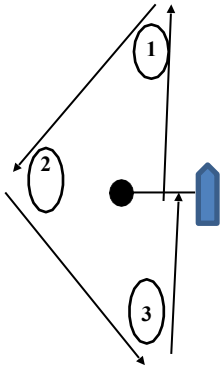
Courses are north and south of the Pier, east of the Pier in Tampa Bay.

Prms/Optis

Sunfish

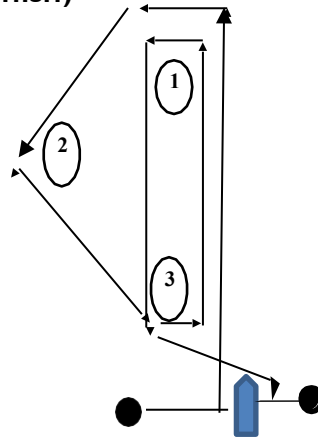
Attachment B - Possible Courses

Course T (start, 1, 2, 3, finish)



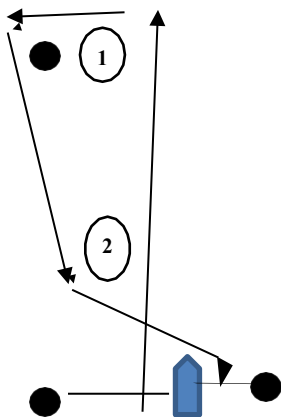
Note - all marks to port

Course O - (start, 1, 2, 3, 1, finish)



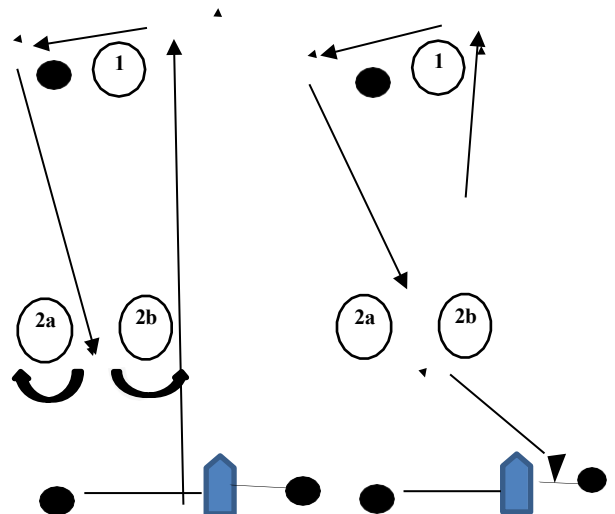
Note - all marks to port

Course W1 - (start, 1, offset, 2, finish)



Note - all marks to port

Course W2 - (start, 1, offset, between 2a and 2b, 1, offset, finish)



NOTE - If only one leeward mark is present it shall be rounded to port. All other marks to port.