

ETCHELLS RED FUNNEL REGATTA 22 – 23 JULY 2023

ORGANISING AUTHORITY
ROYAL LONDON YACHT CLUB

SAILING INSTRUCTIONS

The notation '[DP]' in a rule in the Sailing Instructions means that the penalty for a breach of that rule may, at the discretion of the protest committee, be less than disqualification.

1. RULES

- 1.1 See Notice of Race **1 (Rules)**.

2. CHANGES TO SAILING INSTRUCTIONS

- 2.1 Any change to the Sailing Instructions (SIs) made ashore will be posted by 0900 on the day it will take effect, except that any change to the schedule of races will be posted by 2000 on the day before it will take effect.

3. COMMUNICATIONS WITH COMPETITORS

- 3.1 Notices to competitors will be posted on the Official Notice Board (ONB).
3.2 The ONB will be online at (www.yachtscoring.com). and the Race Office will be at the Royal London Yacht Club (RLYC).
3.3 The Race Committee (RC) intends to broadcast race information and course information by VHF Ch 77 and repeated on the Event WhatsApp group. See Addendum C.
3.4 Competitors wishing to communicate with the Race Committee should do so on VHF Ch 77.

4. CODE OF CONDUCT

- 4.1 Competitors and support persons shall comply with reasonable requests from race officials.

5. SIGNALS MADE ASHORE AND AFLOAT


- 5.1 Signals made ashore will be displayed at the RLYC Flagstaff and advised on the event WhatsApp group.
5.2 When flag AP is displayed ashore, "1 minute" is replaced by "not less than 45 minutes". This changes Race Signals AP.

6. SCHEDULE

- 6.1 See Notice of Race **9 (Schedule)**.

7. CLASS FLAGS

The class flag is shown below.

ICOS Flag "E"	Class Flag 
---------------	---

8. RACING AREA

- 8.1 Racing will take place in the Solent.

9. COURSES

- 9.1 The courses to be sailed will be windward / leeward as described in Addendum B.
- 9.2 Soon after the orange flag attention signal is displayed, and before the warning signal, the RC signal vessel will display the approximate bearing and distance to Mark 1. The course signal, compass bearing and distance to Mark 1 will also be announced on VHF.
- 9.3 If only a single windward or leeward mark is present, boats shall leave that mark to port before proceeding to the next mark of the course.

10. MARKS

- 10.1 With reference to Addendum B, marks 1, 1a, 4s & 4p will be orange inflatable marks.
- 10.2 The starting and finishing marks will be between a committee vessel and a black inflatable mark.
- 10.3 New marks as provided in SI 13 are black marks. In any subsequent change the original marks will be re-laid.
- 10.4 In the event of a change of the next leg or the course an official vessel positioned near a mark will display a flag showing the colour of the next mark, except for the final leg to the finish line.

11. OBSTRUCTIONS

- 11.1 All yachts shall comply with [Associated British Ports Notice to Mariners No 06 of 2023](#) giving details of a Precautionary Area and Moving Prohibited Zone (MPZ). The MPZ shall rank as an obstruction for the purposes of RRS 19 and 20.
- 11.2 Any official boat in close attendance to a craft in difficulty is an obstruction.

12. THE START

- 12.1 Races will be started by using RRS 26.
- 12.2 To alert boats that a start sequence will soon begin, an **Orange Flag will be displayed with multiple sound signals not less than 5 minutes before the warning signal.**
- 12.3 The start line will be between a staff displaying an orange flag on the committee vessel and a black inflatable mark.
- 12.4 The Race Committee **may** broadcast the bow numbers of individually recalled boats on VHF CH 77, as soon as practicable after Flag X has been displayed. Delay or failure to do so is not grounds for redress. This changes RRS 62.1(a).
- 12.5 A boat that does not start within five (5) minutes after her starting signal will be scored Did Not Start without a hearing. This changes RRS A5.1 and A5.2.

13. CHANGE OF THE NEXT LEG OF THE COURSE

- 13.1 To change the next leg of the course, the race committee will lay a new mark (or move the finishing line) and remove the original mark(s) as soon as practicable.
- 13.2 The race committee will announce details of any change under SI 13.1 using VHF Ch 77. Failure of a boat to hear such an announcement, will not be grounds for a request for redress. This changes RRS 62.1(a).

14. THE FINISH

- 14.1 The finish line for will be between a staff displaying a blue flag on the committee vessel and a black inflatable mark.

15. PENALTY SYSTEM

- 15.1 See Notice of Race **14 (Penalty System)**.

16. TIME LIMITS

- 16.1 The Mark 1 Time Limit, Race Time Limit (see RRS 35) and the Target Time are shown in the table below.

Mark 1 Time Limit	Race Time Limit	Finishing Window	Target Race Time
30 mins	90 mins	20 mins	50 – 60 mins

- 16.2 If no boat has passed Mark 1 within the Mark 1 Time Limit, or if no boat has finished within the Race Time Limit, the race shall be abandoned.
- 16.3 Finishing Window. The time limit for boats to finish after the first boat sails the course and finishes is 20 minutes.
- 16.4 Boats still sailing more than 20 minutes after the first boat finishes shall be awarded the points for the place behind the last boat, which has finished the race within this time.
- 16.5 Target time for each race will be 50 - 60 minutes. Failure to meet the target time will not be grounds for redress. This changes RR62.1(a).

17. HEARING REQUESTS

- 17.1 The protest limit is 90 minutes after the last boat has finished the last race of the day or the Race Committee signals no more racing today, whichever is later.
- 17.2 Hearing forms will be available at the Race Office.
- 17.3 Protest and requests for redress or reopening shall be delivered to the Race Office within the protest time limit. Contact mobile phone numbers should be included on the protest form.
- 17.4 Notices will be posted no later than 30 minutes after the protest time limit to inform competitors of the hearings in which they are parties or named as witnesses. Hearings will be held in the protest room located at the RLYC.

18. SCORING

- 18.1 See Notice of Race **15 (Scoring)**.

19. SAFETY REGULATIONS

- 19.1 [DP] A boat that retires from a race shall notify the Race Committee as soon as possible on VHF Ch 77 or by hailing an official support boat or rib.

20. REPLACEMENT OF CREW OR EQUIPMENT

- 20.1 Substitution of competitors is not allowed without the prior written permission of the Race Committee.
- 20.2 Substitution of damaged or lost equipment is not allowed unless authorised in writing by the Race Committee.
- 20.3 Requests for substitution shall be made to the Committee at the first reasonable opportunity, which may be after the race.

21. EQUIPMENT AND MEASUREMENT CHECKS

- 21.1 A boat or equipment may be inspected at any time.

22. SUPPLIED BOATS

- 22.1 Does not apply.

23. OFFICIAL VESSELS

- 23.1 Mark laying vessels will be RLYC Ribs.
- 23.2 The Committee Vessel will be a white hulled motor catamaran – Call Sign Cowes United.

24. SUPPORT PERSON VESSELS

- 24.1 See Notice of Race **16 (Support Person Vessels)**.

25. TRASH

- 25.1 Trash may be placed aboard official or support person vessels.

26. BERTHING

- 26.1 See Notice of Race **18 (Berthing)**.

27. HAUL OUT RESTRICTIONS

- 27.1 See Notice of Race **19 (Haul Out Restrictions)**.

28. DIVING EQUIPMENT AND PLASTIC POOLS

- 28.1 See Notice of Race **20 (Diving Equipment and Plastic Pools)**.

29. PRIZES

29.1 See Notice of Race **24 (Prizes)**.

30. RISK STATEMENT

30.1 See Notice of Race **22 (Risk Statement)**.

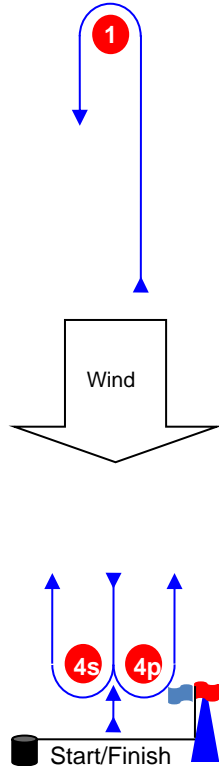
31. INSURANCE

31.1 See Notice of Race **23 (Insurance)**.

ADDENDUM B – Course configuration.

Course Illustrations – Windward Leeward

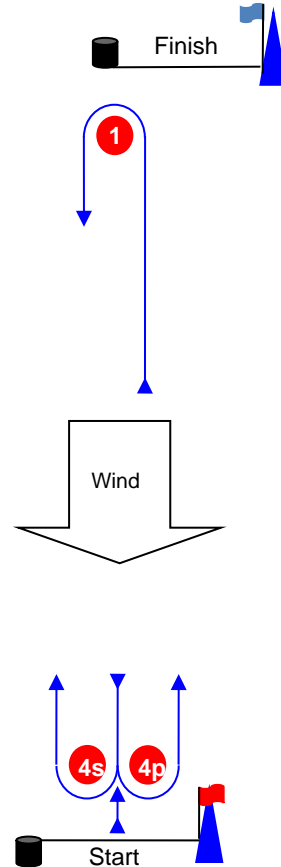
L



Course: Leeward finish

Signal	Mark Rounding Order
L1	Start – 1 – Finish
L2	Start – 1 – 4s/4p – 1 – Finish
L3	Start – 1 – 4s/4p – 1 – 4s/4p – 1 – Finish
L4	Start – 1 – 4s/4p – 1 – 4s/4p – 1 – 4s/4p – 1 – Finish

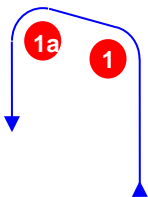
W



Course: Windward Finish

Signal	Mark Rounding Order
W1	Start – 1 – 4s/4p – Finish
W2	Start – 1 – 4s/4p – 1 – 4s/4p – Finish
W3	Start – 1 – 4s/4p – 1 – 4s/4p – 1 – 4s/4p – Finish

LA / WA



Course: Windward/leeward with offset mark 1a

Signal	Mark Rounding Order
LA1	Start – 1 – 1a – Finish
LA2	Start – 1 – 1a – 4s/4p – 1 – 1a – Finish
LA3	Start – 1 – 1a – 4s/4p – 1 – 1a – 4s/4p – 1 – 1a – Finish
LA4	Start – 1 – 1a – 4s/4p – 1 – 1a – 4s/4p – 1 – 1a – 4s/4p – 1 – 1a – Finish
WA1	Start – 1 – 1a – 4s/4p – Finish
WA2	Start – 1 – 1a – 4s/4p – 1 – 1a – 4s/4p – Finish
WA3	Start – 1 – 1a – 4s/4p – 1 – 1a – 4s/4p – 1 – 1a – 4s/4p – Finish

All correspondence should be directed to:

The Royal London Yacht Club, The Parade, Cowes, UK, PO31 7QS. Tel: 01983 300727, Email: sailing@rlyc.org.uk

ADDENDUM C – WHATSAAPP GROUP

We have set up a WhatsApp group for receiving general information from the Race Office and Race Committee. To join the WhatsApp group please use the below QR Code or click on this link:

<https://chat.whatsapp.com/GIKVYC1X27Q7IzVhQP0cS7>

Instructions on using QR codes:

- For Apple phones: Please open your camera app and point it at the QR code and then follow the link it displays on your screen.
- For Android phones: Please obtain a barcode scanning app from the Google Play Store such as “Barcode Scanner”, open the barcode scanning app and point it at the QR code and then follow the link it displays on your screen.

QR CODE:

