



**Toronto, CANADA
September 15-17, 2023**

SAILING INSTRUCTIONS

The Organizing authority will be National Yacht Club in collaboration with IM24CA and Canadian Melges24 Class Association.

The notation '[NP]' in a rule means that a boat may not protest another boat for breaking that rule. This changes RRS 60.1(a).

1 RULES

See NOR #1.

2 CHANGES TO SAILING INSTRUCTIONS

- 2.1** Any change to the sailing instructions will be posted before 0900 on the day it will take effect, except that any change to the schedule of races will be posted by 2000 on the day before it will take effect.
- 2.2** Changes to a sailing instruction may be made on the water by the Signal Boat displaying a Code Flag L over Code Flag C with one sound on the water and broadcasting the change on the communications channel VHF International 73. The oral instruction will also be verbally given to boats who sail to the Signal Boat and request it. This is as per RRS 90.2(c).

3 COMMUNICATIONS WITH COMPETITORS

- 3.1** Notices to competitors will be posted on the official notice board located at <https://yachtscoring.com/emenu.cfm?eid=15738>
There may be an Unofficial Notice Board in the Chart Room at NYC.
- 3.2** The race office is located at the NYC Office.
- 3.3** On the water, the race committee intends to monitor and communicate with competitors on VHF radio channel International 73.



National Yacht Club



- 3.5 [DP] While racing, except in an emergency, a boat shall not make voice or data transmissions and shall not receive voice or data communication that is not available to all boats.

4 CODE OF CONDUCT

- 4.1 [DP] Competitors and support persons shall comply with reasonable requests from race officials.
- 4.2 [DP] Competitors and support persons shall handle any equipment or place advertising provided by the organizing authority with care, seamanship, in accordance with any instructions for its use and without interfering with its functionality.

5 SIGNALS MADE ASHORE

- 5.1 Signals made ashore will be displayed at the Flag pole to the west of the NYC Clubhouse.
- 5.2 When flag AP is displayed ashore, '1 minute' is replaced with 'not less than 30 minutes' in Race Signals AP.

6 SCHEDULE OF RACES

- 6.1 There will be 4 races a day scheduled except for Sunday Sept. 17, when only 2 races are scheduled.
- 6.2 One extra race per day may be sailed, provided that the class does not become more than one race ahead of schedule.
- 6.3 To alert boats that a race or sequence of races will begin soon, the orange starting line flag will be displayed with one sound at least one minute before a warning signal is made.

7 CLASS FLAGS

The warning signal will be a Flag with the Melges Logo on it.

8 RACING AREA

- 8.1 The racing will be on Lake Ontario near or in Humber Bay, Toronto.

9 COURSES

- 9.1 See NOR # 13 and Attachment A.
- 9.2 No later than the warning signal, the race committee signal vessel will display the approximate compass bearing of the first leg and the course designation.



10 MARKS

- 10.1 Mark(s) will be inflated marks as described at the competitors meeting.

The plan is to use Yellow Tetrahedrons for # 1 and 2 Marks, The Offset at 1 will be a yellow tetrahedron or a red ball. A Green inflatable will be used for Start and a Red inflatable for Finish. The change mark will be an Orange Tetrahedron.

Anchors that are held in place by a floating bumper will not be marks of the course. Other inflatables may be used if required.

11 OBSTRUCTIONS

- 11.1 [DP] [NP] The airport to the south of the NYC has white restriction marks at the end of each runway. Boats shall not sail between the marks and the shore except they may sail inside the furthest limit mark off Ontario Place.

12 THE START

- 12.1 The starting line is between the staff displaying an orange flag on the Signal Boat and the nearby start mark or the staff displaying an orange flag on the nearby mark boat.
- 12.2 If any part of a boat's hull is on the course side of the starting line during the one minute before her starting signal and she is identified, the race committee may attempt to broadcast her sail number on VHF channel 73. Failure to make a broadcast or to time it accurately will not be grounds for a request for redress. This changes RRS 62.1(a).
- 12.3 If any part of a boat's hull is on the course side of the starting line at her starting signal and she is identified, the race committee will attempt to hail her sail number. Failure to hail her number, failure of her to hear such a hail, or the order in which boats are hailed will not be grounds for a redress for request. This changes RRS 62.1(a).
- 12.4 A boat that does not *start* within 4 minutes after her starting signal will be scored Did Not Start without a hearing. This changes RRS A5.1 and A5.2.

13 CHANGE OF THE NEXT LEG OF THE COURSE

- 13.1 To change the next leg of the course, the race committee will lay a new mark (or move the finishing line) and remove the original mark as soon as practicable.

When in a subsequent change a new mark is replaced, it will be replaced by an original mark.

There will be no offset for the new mark if the windward mark is changed.



14 THE FINISH

- 14.1 The finishing line is between a staff displaying a blue flag on the finishing boat and the course side of the finishing mark.

15 PENALTY SYSTEM

- 15.1 See NOR #1.7 and 14.

16 TIME LIMITS [AND TARGET TIMES]

- 16.1 *Mark 1 Time Limit Race Time Limit Finishing Window Target time*
30 minutes 90 minutes 20 minutes 45 minutes
Failure to meet the Target Time will not be grounds for redress. This changes RRS 62.1(a).

17 HEARING REQUESTS

- 17.1 The protest time limit is 60 minutes after the last boat finishes the last race of the day or the race committee signals no more racing today, whichever is later. The time will be posted on the official notice board.
- 17.2 Hearing request forms are available from <https://yachtscoring.com/emenu.cfm?eid=15738> . There will also be forms available from the Race Office. .
- 17.3 Notices will be posted no later than 30 minutes after the protest time limit to inform competitors of hearings in which they are parties or named as witnesses. Hearings will be held in the protest room, located at NYC, beginning at the time posted.

18 SCORING

See NOR # 15.

19 SAFETY REGULATIONS

- 19.1 [DP] A boat that retires from a race shall notify the race committee at the first reasonable opportunity.

20 REPLACEMENT OF CREW OR EQUIPMENT

- 20.1 [DP] Substitution of competitors is allowed with permission of the Class Representative or Protest Committee. This modifies NOR 4.6
- 20.2 [DP] Substitution of damaged or lost equipment is not allowed unless authorized in writing by the Class Representative or Protest Committee. Requests for substitution shall be made at the first reasonable opportunity, which may be after the race.



21 EQUIPMENT AND MEASUREMENT CHECKS

See NOR #10 and SI 21.1.

- 21.1** [DP] When instructed by a race official on the water, a boat shall proceed to a designated area for inspection.

22 SUPPLIED BOATS (Not Applicable)

23 OFFICIAL VESSELS

- 23.1** Official vessels may be identified with Flags.

24 [DP] SUPPORT TEAMS

See NOR #16.

25 TRASH DISPOSAL

- 25.1** Trash may be placed aboard official or support person vessels.

26 BERTHING

- 26.1** [DP] Boats shall be kept in their assigned places while in the harbour.

27 HAUL-OUT RESTRICTIONS

- 27.1** [DP] Boats shall not be hauled out during the event except with and according to the terms of prior written permission of the race committee.

28 DIVING EQUIPMENT AND PLASTIC POOLS

- 28.1** See NOR #19 and 20.

29 PRIZES

- 29.1** See NOR #24.

30 RISK STATEMENT

- 30.1** See NOR #22.

31 INSURANCE

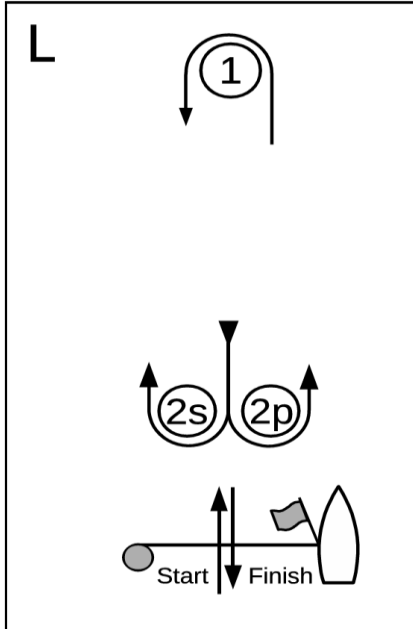
- 31.1** See NOR # 23.



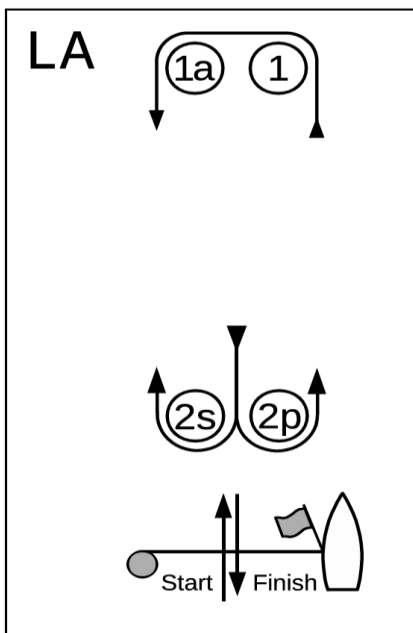
Attachment A (Courses)

If a Gate mark (2S/P) is missing round the remaining existing mark to Port.

COURSE DIAGRAMS

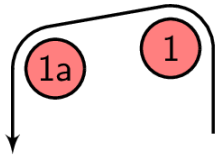


Course L – Windward/Leeward, Leeward Finish	
<i>Signal</i>	<i>Mark Rounding Order</i>
L2	Start – 1 – 2s/2p – 1 – Finish
L3	Start – 1 – 2s/2p – 1 – 2s/2p – 1 – Finish
L4	Start – 1 – 2s/2p – 1 – 2s/2p – 1 – 2s/2p – 1 – Finish

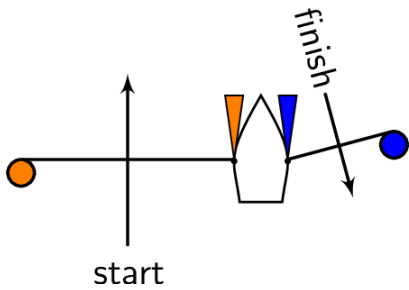
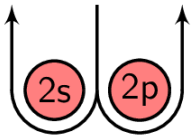


Course LA – Windward/Leeward with Offset Mark, Leeward Finish	
<i>Signal</i>	<i>Mark Rounding Order</i>
LA2	Start – 1 – 1a – 2s/2p – 1 – 1a – Finish
LA3	Start – 1 – 1a – 2s/2p – 1 – 1a – 2s/2p – 1 – 1a – Finish
LA4	Start – 1 – 1a – 2s/2p – 1 – 1a – 2s/2p – 1 – 1a – 2s/2p – 1 – 1a – Finish

HA



wind



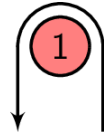
Signal Mark rounding order

HA 1 Start -1-1a-Finish

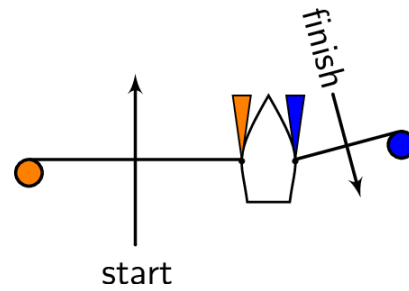
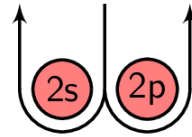
HA 2 Start-1-1a-2s/p-1-1a-Finish

HA 3 Start 1-1a-2s/p-1-1a-2s/p-1-1a-Finish

HL



wind



Signal Mark rounding order

HL 1 Start -1-Finish

HL 2 Start-1-2s/p-1-Finish

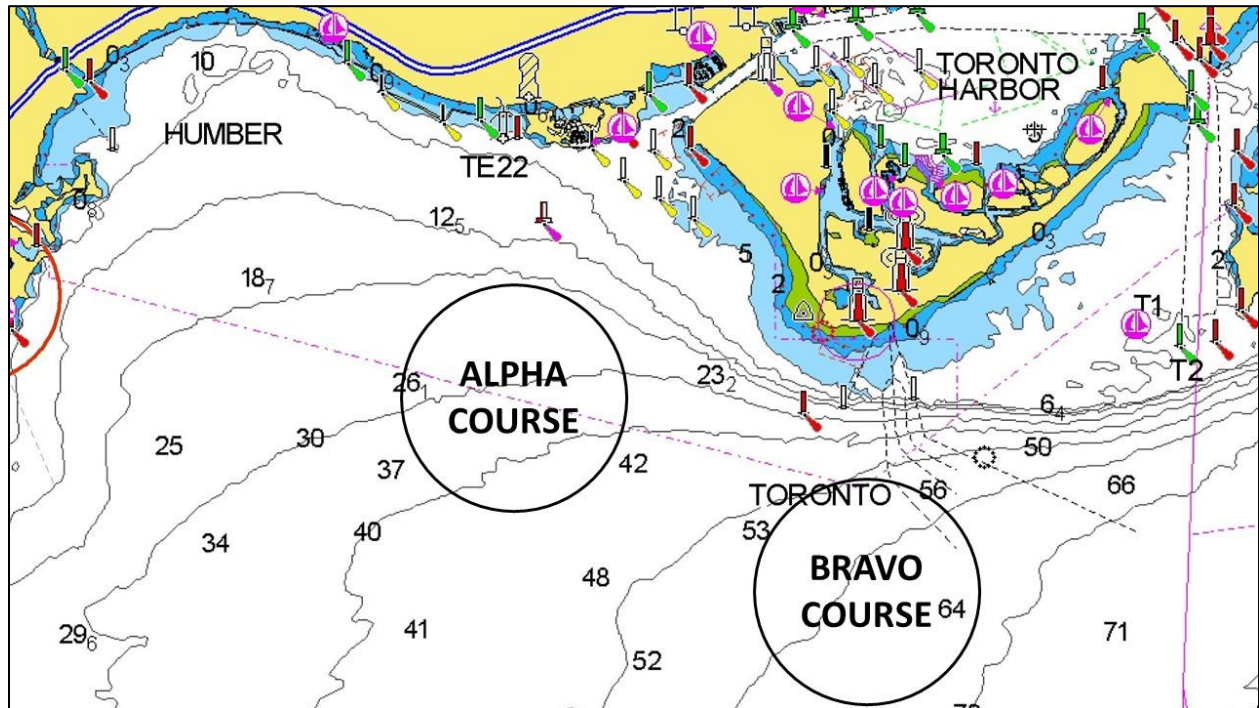
HL 3 Start 1-2s/p-1-2s/p-1-Finish



National Yacht Club



Attachment B (Race Course Areas)



National Yacht Club

