



2023 ORC East Coast Championship

Newport, Rhode Island

July 14-16, 2023

SAILING INSTRUCTIONS

ADDENDUM A – DISTANCE RACE COURSES

A1 ORDER OF START

The intended order of start will be announced on the circle VHF Channel. Classes may not start in numerical order. The Race Committee may combine two or more classes into one start by displaying multiple class flags at the warning signal. The Race Committee will endeavor to announce the next class(es) to start on the circle VHF Channel.

A2 MARKS

A2.1 The starting mark will be a green tetrahedron buoy.

A2.2 The finishing mark will be a pink tetrahedron buoy.

A2.3 Special Marks “E” and “L”, if used, will be orange inflatable buoys.

A2.4 Special Mark “E”

The Race Committee may add a new first mark “E” to any course described in SI Addendum A3.

If special mark “E” is used, the Race Committee will list “E” along with the designated rounding side as the first mark on the course board as described in SI A3.4 - A3.11.

The magnetic bearing and distance (in nautical miles to the nearest tenth) to special mark “E” will be posted on a board on the Race Committee signal vessel.

A2.5 GOVERNMENT MARKS AND ISLANDS

See charts 13205, 13218, 13223, 13226 and 13224 for more detail.

Description

Gould Island

RW “NB” Mo(A) WHIS

R “2” Fl R 4s WHIS south of Point Judith

G “1 Bl” Fl G 4s BELL north of Block I

SP RG “SP” Fl (2+1) R 6s BELL

GR “NR” BELL

G “9” Fl G 2.5s GONG

Approx. location

41° 32.00’ N; 071° 20.67’ W (center of island)

41° 23.00’ N; 071° 23.36’ W

41° 18.46’ N; 071° 28.35’ W

41° 15.49’ N; 071° 34.55’ W

41° 36.92’ N; 071° 17.59’ W

41° 26.64’ N; 071° 24.15’ W

41° 28.64’ N; 071° 21.24’ W

A3 COURSES

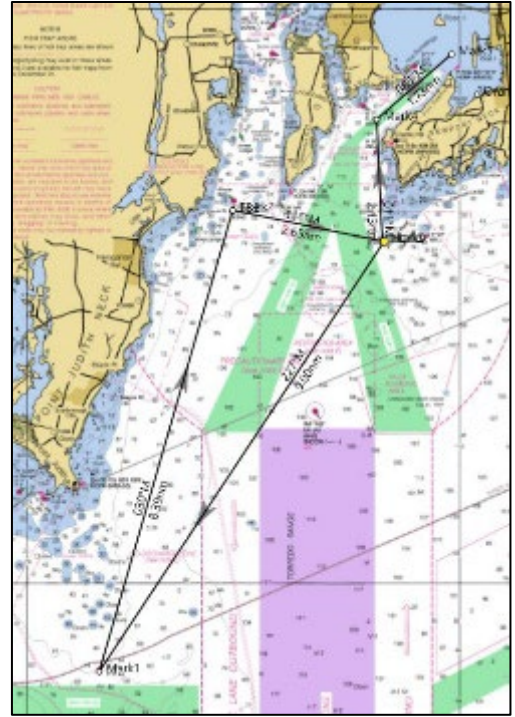
A3.1 All boats shall pass through the center span only for any course passing under the Jamestown Verrazano Bridge and/or the Newport Pell Bridge, in which case the center span bridge piers define a gate mark.

A3.2 Government marks shall have no required side except when designated as a rounding mark.

A3.3 No later than the warning signal, the Race Committee will display on a board the course to be sailed. The Race Committee will endeavor to announce the designated courses over the circle VHF channel. Failure to make such an announcement shall not be grounds for a boat to request redress. This changes RRS 62.1(a).

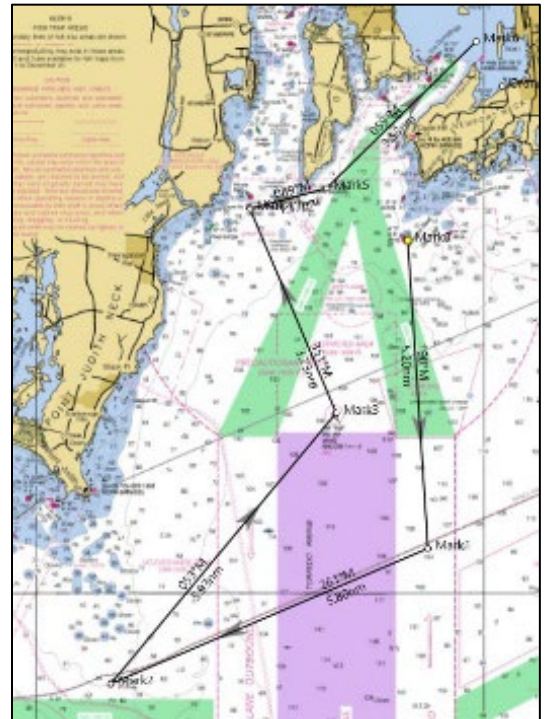
A3.4 COURSE 1 – 24nm

- Special Mark “E”, if used (see SI A2.4)
- R “2” Fl R4s approximately 3.25nm south of Point Judith to starboard
- Mark TB2: Orange inflatable buoy set at approximately 41° 26.480n; 071° 25.250w to starboard
- R “2” Q R WHIS approximately .75nm south of Brenton Point to port
- Finish between a staff displaying the blue flag on the Race Committee vessel and the nearby finishing mark approximately 0.4 NM north of the Fl R 6 sec Horn “2” on the northern point of Fort Adams.



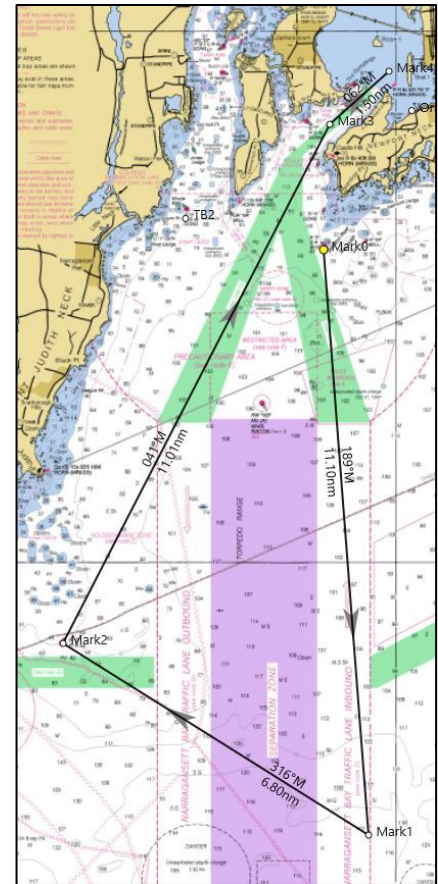
A3.5 COURSE 2 – 25.5nm

- Special Mark “E”, if used (see SI A2.4)
- Mark 1: Orange inflatable buoy set at approximately 41° 20.750’N; 071 ° 21.250’W to starboard
- R “2” Fl R4s approximately 3.25nm south of Point Judith to starboard
- RW “NB” Mo (A) WHIS approximately 4nm south of Beavertail to port
- Mark TB2: Orange inflatable buoy set at approximately 41° 26.480n; 071° 25.250w to starboard
- GR “NR” BELL just south of Beavertail to port
- Finish between a staff displaying the blue flag on the Race Committee vessel and the nearby finishing mark approximately 0.4 NM north of the Fl R 6 sec Horn “2” on the northern point of Fort Adams.



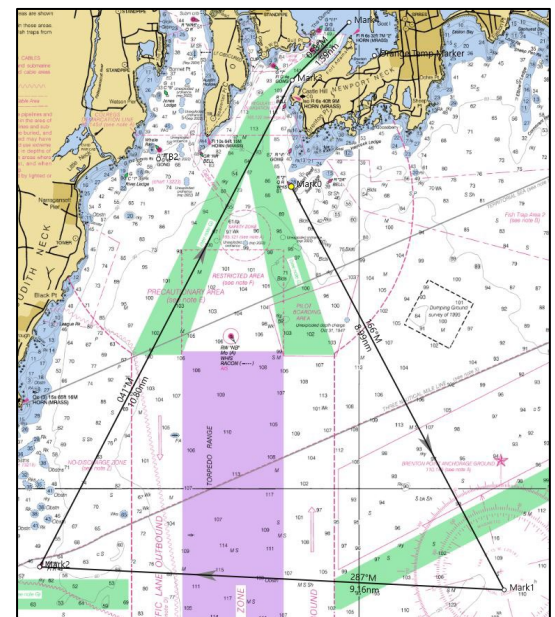
A3.6 COURSE 3 – 30nm

- Special Mark “E”, if used (see SI A2.4)
- Mark 1: Orange inflatable buoy set at approximately 41° 15.000’N; 071° 20.500’W to starboard
- R “2” Fl R4s approximately 3.25nm south of Point Judith to starboard
- Finish between a staff displaying the blue flag on the Race Committee vessel and the nearby finishing mark approximately 0.4 NM north of the Fl R 6 sec Horn “2” on the northern point of Fort Adams.



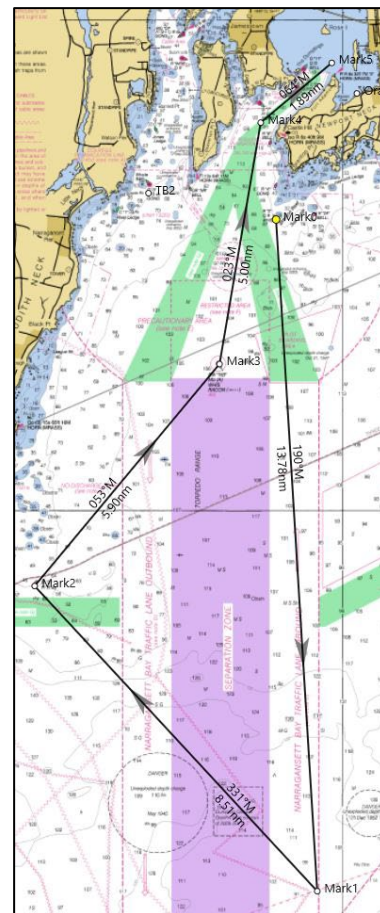
A3.7 COURSE 4 – 30nm

- Special Mark “E”, if used (see SI A2.4)
- Mark 1: Orange inflatable buoy set at approximately 41° 18.000’N; 071° 16.200’W to starboard
- R “2” Fl R4s approximately 3.25nm south of Point Judith to starboard
- Finish between a staff displaying the blue flag on the Race Committee vessel and the nearby finishing mark approximately 0.4 NM north of the Fl R 6 sec Horn “2” on the northern point of Fort Adams.



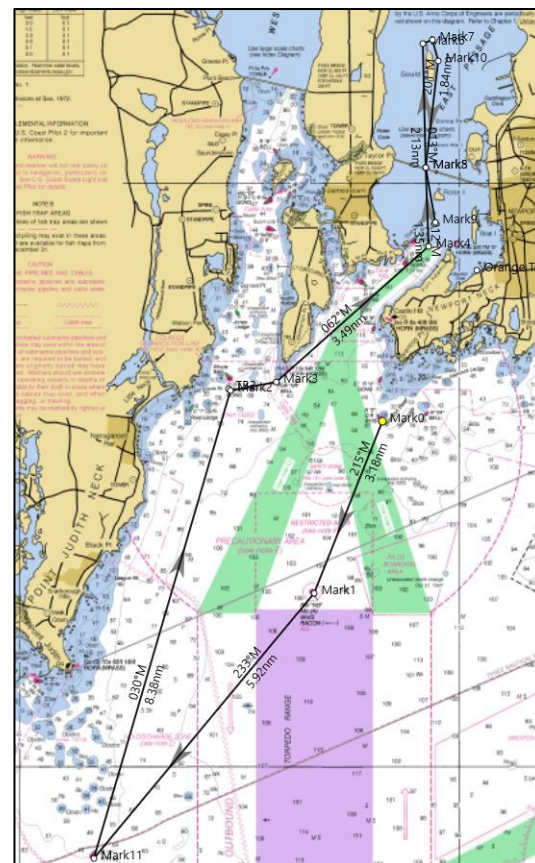
A3.8 COURSE 5 – 35nm

- Special Mark “E”, if used (see SI A2.4)
- Mark 1: Orange inflatable buoy set at approximately 41° 12.000’N; 071° 20.500’W to starboard
- R “2” Fl R4s approximately 3.25nm south of Point Judith to starboard
- RW “NB” Mo (A) WHIS approximately 4nm south of Beavertail to port
- Finish between a staff displaying the blue flag on the Race Committee vessel and the nearby finishing mark approximately 0.4 NM north of the Fl R 6 sec Horn “2” on the northern point of Fort Adams.



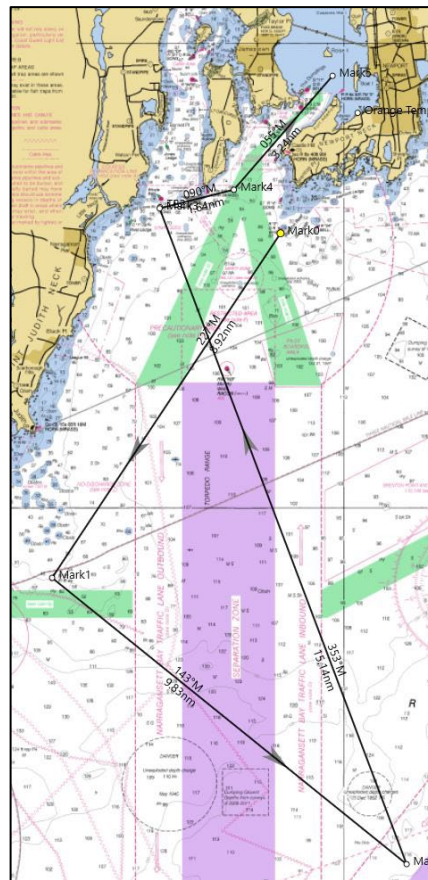
A3.9 COURSE 6 – 38.5nm

- Special Mark “E”, if used (see SI A2.4)
- RW “NB” Mo (A) WHIS approximately 4nm south of Beavertail to starboard
- R “2” Fl R4s approximately 3.25nm south of Point Judith to starboard
- Mark TB2: Orange inflatable buoy set at approximately 41° 26.480n; 071° 25.250w to starboard
- GR “NR” BELL just south of Beavertail to port
- G “9” Fl G 2.5s GONG off Ft. Wetherill to port
- The center span of the Newport Pell Bridge
- Gould Island to starboard
- The center span of the Newport Bell Bridge
- Finish between a staff displaying the blue flag on the Race Committee vessel and the nearby finishing mark approximately 0.4 NM north of the Fl R 6 sec Horn “2” on the northern point of Fort Adams.



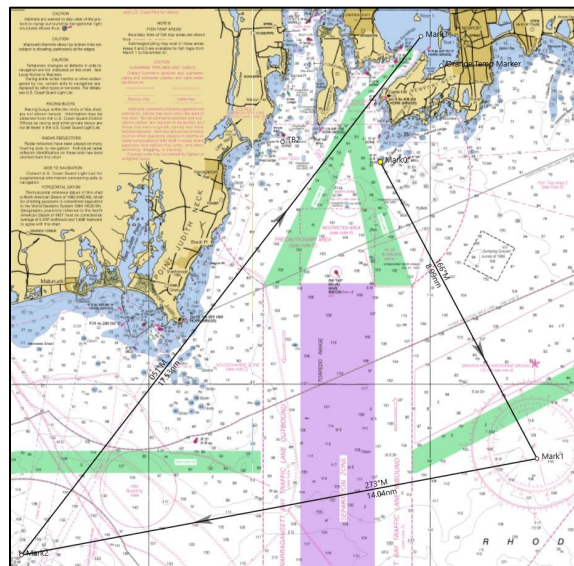
A3.10 COURSE 7 – 38.5nm

- Special Mark “E”, if used (see SI A2.4)
- R “2” Fl R4s approximately 3.25nm south of Point Judith to port
- Mark 1: Orange inflatable buoy set at approximately 41° 12.300’N; 071° 18.200’W to port
- Mark TB2: Orange inflatable buoy set at approximately 41° 26.480’N; 071° 25.250’W to starboard
- GR “NR” BELL just south of Beavertail to port
- Finish between a staff displaying the blue flag on the Race Committee vessel and the nearby finishing mark approximately 0.4 NM north of the Fl R 6 sec Horn “2” on the northern point of Fort Adams.



A3.11 COURSE 8 – 40nm

- Special Mark “E”, if used (see SI A2.4)
- Mark 1: Orange inflatable buoy set at approximately 41° 18.000’N; 071° 16.200’W to starboard
- G “1 BI” Fl G 4s BELL north of Block I to starboard
- Finish between a staff displaying the blue flag on the Race Committee vessel and the nearby finishing mark approximately 0.4 NM north of the Fl R 6 sec Horn “2” on the northern point of Fort Adams.



A3.11 COURSE 9 – 47nm

- Special Mark “E”, if used (see SI A2.4)
- G “1 BI” Fl G 4s BELL north of Block I to port
- Mark 2: Orange inflatable buoy set at approximately 41° 12.300’N; 071° 18.200’W to port
- Mark TB2: Orange inflatable buoy set at approximately 41° 26.480n; 071° 25.250w to starboard
- GR “NR” BELL just south of Beavertail to port
- Finish between a staff displaying the blue flag on the Race Committee vessel and the nearby finishing mark approximately 0.4 NM north of the Fl R 6 sec Horn “2” on the northern point of Fort Adams.

