

2023 J/24 & J/22 East Coast Championship

October 20-22, 2023

Organizing Authority (OA): Severn Sailing Association, J/24 Fleet 8 & J/22 Fleet 19
Annapolis, MD

<https://yachtscoring.com/emenu.cfm?eid=16039>

SAILING INSTRUCTIONS (SIs)

Rev. 10/18/2023

Amendment #1 (posted 10/18/2023) with changes in BOLD and RED (SI 16.1,16.2, Attachment B)

The notation '[DP]' in these SIs means that the penalty for a breach of that rule may, at the discretion of the protest committee, be less than disqualification. The notation '[NP]' in a rule of the SIs means that a boat may not protest another boat or request redress for breaking that rule. This changes RRS 60.1(a) and RRS 60.1(b).

All times are US Eastern Time.

1 RULES

- 1.1 The event will be governed by the rules as defined in the Racing Rules of Sailing (RRS) 2021-2024.
- 1.2 See the notice of race (NoR) for additional documents and rules that apply.

2 CHANGES TO THE SAILING INSTRUCTIONS

- 2.1 Any change to the sailing instructions will be posted no less than 2 hours before the scheduled warning signal on the day it will take effect, except that any change to the schedule of races will be posted by 2000 on the day before it will take effect.

3 COMMUNICATIONS

- 3.1 Notices to competitors will be posted on the official notice board located online at <https://yachtscoring.com/emenu.cfm?eid=16039>
- 3.2 Any questions regarding these SIs shall be submitted in writing to the race committee (email preferred to joe.friebele@verizon.net). The questions and any answers will be posted on the official notice board as soon as practical.
- 3.3 [DP] Except in an emergency, a boat shall not make voice or data transmissions and shall not receive voice or data communication that is not available to all boats. This shall apply from the time she leaves her mooring for the first race of the day until racing for the day is done.
- 3.4 [NP] On the water, the race committee intends to monitor and communicate with competitors via **VHF radio on channel 65A**. This may include announcements and confirmation of race committee signals before, during, and after racing. This may also include other information such as the location of the starting area, countdown to the start, OCS hails, general recalls, and postponements.

4 SIGNALS MADE ASHORE

- 4.1 Signals made ashore will be displayed from the flagpole in front of the main clubhouse.

4.2 When flag AP is displayed ashore, '1 minute' is replaced with 'not less than 60 minutes'.

4.3 When flag Y is displayed ashore, RRS 40 applies at all times while afloat-

5 SCHEDULE OF RACES

5.1 The schedule is as follows:

Day	Date	Time	Event/Activity
Wednesday	Oct 18	1800	Last day to electronically submit documents specified in NoR 8.1
Thursday	Oct 19	1000-1800	Registration/Equipment Inspection – J/24 & J/22
		1500	Practice Race
		1830	Competitors Meeting, All J/24s afloat
Friday	Oct 20	0800-0830	Substitute Crew Check-In - J/24
		1100	Warning signal for first race of the day
		1700-1800	Registration/Equipment Inspection – J/22
		After racing	Friday Social & Dock Talk
Saturday	Oct 21	0800-0830	Substitute Crew Check-In Registration/Equipment Inspection – J/22
		1100	Warning signal for first race of the day
		TBD	Dinner & Regatta Party
Sunday	Oct 22	0800-0830	Substitute Crew Check-In
		1000	Warning signal for first race of the day
		1430	No starts after this time
		After racing	Awards ceremony and refreshments

5.2 For the J/24 East Coast Championship, nine races are scheduled. For the J/22 East Coast Championship, seven races are scheduled.

5.3 No warning signal will be made after 1430 on Sunday, October 22.

6 CLASS FLAG

6.1 The J/24 Class Flag will be the class flag displaying the J/24 logo (Blue insignia on a white background).

6.2 The J/22 Class Flag will be the class flag displaying the J/22 logo (Blue insignia on a white background)

7 RACING AREAS

7.1 SI Attachment A shows the location of the racing areas.

7.2 Each morning, the race committee will post the approximate initial location of the starting area to the notice board no later 2 hours prior to the first scheduled warning signal.

8 COURSES

8.1 Courses will be windward/leeward with five legs (WA3) or four legs (LA2) as shown in SI Attachment B.

8.2 [NP] No later than the warning signal, the race committee signal vessel will display the course designator and the approximate compass bearing and distance to the first mark. The race committee will also broadcast this information. Failure to broadcast or to receive this information shall not constitute grounds for granting redress.

- 8.3 [NP] An offset mark (designated mark 1a) will be used in conjunction with mark 1. The offset mark will be placed to the left of the weather mark (looking up wind) at approximately a right angle to the weather leg.
- 8.4 Mark 2 will be a gate consisting of two marks (mark 2p and mark 2s). If the gate is not present, mark 2 shall be rounded to port. Except when there is a change of course, the gate will be positioned approximately to windward of the race committee signal vessel at a distance at the discretion of the race committee. The gate may be laid after the starting signal.
- 8.5 Course WA3 course will be not shortened to less than four legs, and course LA2 will be not shortened to less than three legs. For purpose of this SI only, the distance between mark 1 and mark 1a will not be regarded as a leg of the course. This changes RRS 32.

9 MARKS

9.1 Marks will be:

Mark	Original	New Marks
1	Orange cylinder	Orange tetrahedron
1a (offset)	Orange ball	Orange ball
2s and 2p (gate)	Orange cylinders	Orange tetrahedron
Start	Race committee vessel and either a race committee vessel or a yellow cylinder	
Finish	Race committee vessel and a yellow cylinder	

10 AREAS THAT ARE OBSTRUCTIONS

10.1 No areas are designated as obstructions.

11 START

- 11.1 Races will be started using RRS 26.
- 11.2 The starting line will be between a staff displaying an orange flag on the race committee signal vessel and either a staff displaying an orange flag on a race committee vessel at the port end or the course side of the starting mark.
- 11.3 [NP] The race committee will attempt to broadcast the bow and/or sail numbers of all boats subject to individual recall (RRS 29.1), UFD (RRS 30.3), BFD (RRS 30.4); the initial hails will not be altered based on a boat's actions after the starting signal.
- 11.4 RRS 30.4 is changed to permit the race committee to hail affected boats via VHS on Channel 65A and/or display bow or sail numbers after a general recall.
- 11.5 [NP] A boat starting later than 6 minutes after her starting signal shall be scored Did Not Start without a hearing. This changes RRS 35, 63.1, A5.1 and A5.2.

12 CHANGE OF THE NEXT LEG OF THE COURSE

- 12.1 A course change to the next leg of the course will be signaled according to RRS 33.
- 12.2 To change the next leg of the course, the race committee will lay a new mark (or move the finishing line). The new mark will be a tetrahedron. When in a subsequent change a new mark is replaced, it will be replaced by an original mark.

13 THE FINISH

13.1 The finishing line will be between a staff displaying a blue flag on the finishing line vessel and course

side of the finish mark.

14 PENALTY SYSTEM

- 14.1 A boat may accept a post-race scoring penalty of 30% only until the end of the protest time limit by completing a Penalty Acceptance Form available at the protest desk. This changes RRS T.1.(a) and T.1.(b).
- 14.2 A boat accepting a post-race scoring penalty after an arbitration hearing shall be penalized 40%. This changes RRS T.1.(b).
- 14.3 The first two sentences of RRS 44.1 are changed to: “A boat may take a one-turn penalty when she may have broken one or more rules of Part 2 or RRS 31 in an incident while *racing*. However, when she may have broken one or more rules of Part 2 while in the *zone* around a *mark* other than a starting *mark*, her penalty shall be a two-turns penalty.”
- 14.4 When a boat intends to take a penalty for an incident that occurred in the zone of the windward mark that is not a finishing mark, or that occurred between the windward mark and the offset mark, she may delay taking the penalty until after passing the offset mark. This changes RRS 44.2

15 TIME LIMITS AND TARGET TIMES

- 15.1 [NP] The target time for races is 60 to 80 minutes.
- 15.2 The time limit for the first boat to sail the course as required by RRS 28.1 and finish is 90 minutes.
- 15.3 Boats failing to finish within 20 minutes after the first boat sails the course and finishes will be scored TLE (Time Limit Expired) without a hearing. A TLE score shall be two more points than the number of boats that have finished within the time limit. This changes RRS 35, 63.1, A5.1, A5.2, and A10. The race committee will lower the blue finish flag with one long sound when the finishing window is closed.

16 PROTESTS AND REQUESTS FOR REDRESS

- 16.1 Hearing request forms are available at the protest desk ~~located on the upper floor of the main SSA clubhouse~~. Protests and requests for redress or reopening shall be delivered there within the appropriate time limit. **The protest desk will be located on the upper floor of the main SSA clubhouse on Friday, October 20, and on the third floor of the AYC Sailing Center on Saturday, October 21 and Sunday, October 22.**
- 16.2 The protest time limit for protests and request for redress is ~~60 minutes~~ **90 minutes** after the signal vessel docks. This changes RRS 62.2.
- 16.3 Notices will be posted no later than 30 minutes after the protest time limit to inform competitors of any hearing in which they are parties or named as witnesses and the location of the hearing.
- 16.4 Notices of protests by the race committee will be posted to inform boats under RRS 61.1(b).

17 SCORING

- 17.1 One race is required to be completed to constitute a championship.
- 17.2 When fewer than five races have been completed, a boat’s series score will be the total of her race scores. When five or more races have been completed, a boat’s series score will be the total of her race scores, excluding her worst score.

18 [NP][DP] SAFETY REGULATIONS

- 18.1 A boat that retires from a race or does not intend to compete in a race or returns to the racing area shall notify the race committee as soon as possible via hail or VHS Channel 65A.

18.2 (NP)(DP) All boats shall check-in with the Race Committee boat displaying the L flag before the first warning signal of the day. Each boat shall sail past the race committee on starboard tack and hail her bow number until acknowledged by the Race Committee.

19 REPLACEMENT OF CREW OR EQUIPMENT

19.1 A crew listed for the event may be different for different days only if scheduled in advance at registration. Emergency changes may only be made with written permission of the race committee.

19.2 Even if replacement or crew substitution is allowed, the number of crew shall not change during the event.

20 [NP][DP] EVENT ADVERTISING

20.1 Boats shall display event advertising that is supplied by the organizing authority. Such advertising shall be installed according to the instructions supplied with them and shall remain in place for the duration of the event.

21 [NP][DP] SUPPORT VESSELS

21.1 Support vessels shall comply with NoR 14.

22 [NP][DP] AFLOAT AND HAUL-OUT RESTRICTIONS

22.1 J/24s shall be afloat by 1830 on October 19 and shall not be hauled out during the regatta except in accordance with the prior written permission and terms of the race committee. This restriction includes rudders, which must be in normal sailing position on the transom.

23 [DP] DIVING EQUIPMENT, PLASTIC POOLS, AND OTHER PROHIBITED ACTIONS

23.1 Underwater breathing apparatus and plastic pools or their equivalent shall not be used between the time the boat is afloat and the end of the event. The hull may be cleaned at any time by swimming or keelhauling using ropes, cloth or other equipment designed for that use.

23.2 Careening by any means for the purpose of cleaning or inspecting the hull is prohibited during the event.

23.3 Use of dehumidifiers or electric fans is prohibited at all times while boats are afloat.

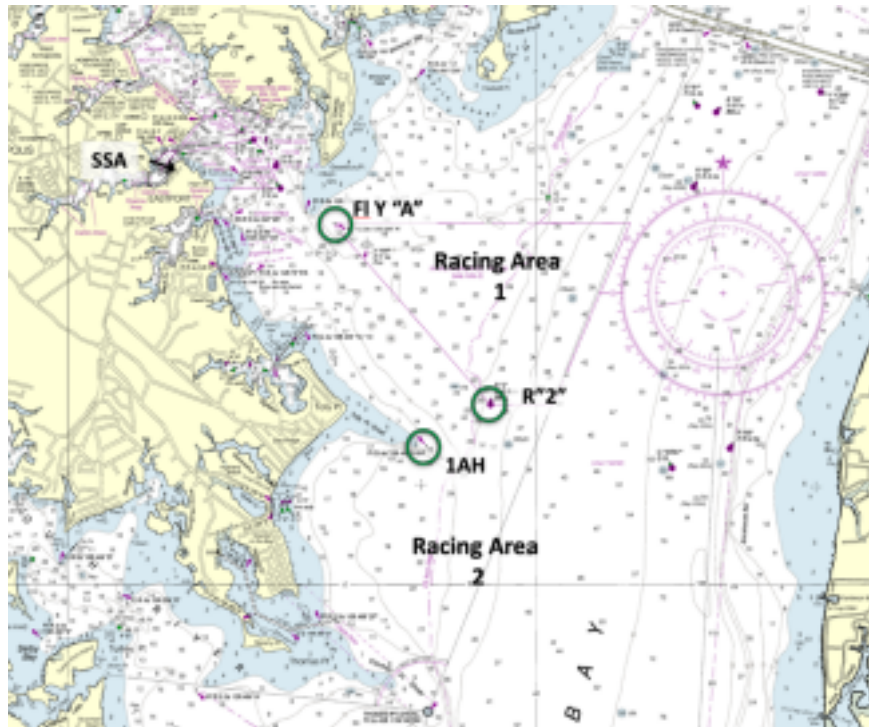
24 PRIZES

24.1 Prizes will be awarded in accordance with the NoR.

25 DISCLAIMER OF LIABILITY

25.1 Competitors participate in the event entirely at their own risk. See RRS 3, Decision to Race. The organizing authority will not accept any liability for illness, material damage or personal injury or death sustained in conjunction with or prior to, during or after the event.

SI ATTACHMENT A - RACING AREAS (see SI 7)



SI ATTACHMENT B – COURSE DIAGRAMS (see SI 8)

