



**2023 Distance Invitational
Windjammers Sailing Club
Saturday, June 24, 2023
Milford, CT
Sailing Instructions (SIs)**

1. RULES

- 1.1. This event is governed by the rules as defined in *The Racing Rules of Sailing*.
- 1.2. The *2023 ECSA PHRF Regulations* apply.

2. CHANGES TO SAILING INSTRUCTIONS

- 2.1. Any changes to the Sailing Instructions will be posted before 0800 on the day of the race, except that any change to the schedule of races will be posted by 1600 on the day before it will take effect.
- 2.2. Copies of the Notice of Race, Sailing Instructions, and Scratch Sheet will be available at the Race Committee boat.

3. COMMUNICATIONS WITH COMPETITORS

- 3.1. Notices to competitors will be posted on the online official notice board at <https://yachtscoring.com/>.
- 3.2. On the water, the race committee intends to monitor and communicate with the competitors on VHF ch 72. Communications may include time checks, starting order of classes, courses, changes to the courses, shortening, postponement, starting signals and recalls.
- 3.3. From the first warning signal until the end of the last race, except in an emergency, a boat shall not make voice or data transmission and shall not receive voice or data transmissions that are not available to all boats.

4. SIGNALS MADE ASHORE

- 4.1. Signals made ashore, including Flag "L," will be displayed on the Race Committee boat at the Port Milford dock.
- 4.2. When Pennant "AP" (the Answering Pennant) is displayed ashore with two sound signals, '1 minute' is replaced with 'not less than 60 minutes' in Race Signals AP, meaning that the race is postponed, and the first warning will be made not less than 60 minutes after AP is lowered with a sound signal.

5. SCHEDULE OF RACES

- 5.1. The first warning will be at 1000 EDT.

6. CLASS FLAGS

- 6.1. Class flags will be:
 - Class 1: Numeral Pennant 1
 - Class 2: Numeral Pennant 2
 - Class 3: Numeral Pennant 3
 - Class 4: Numeral Pennant 4

7. RACING AREA

- 7.1. The starting area will be in the general vicinity of Charles Island. The race will be in the general area ranging from Norwalk to the west, Port Jefferson to the south, and Falkner Island to the east.

8. COURSES

- 8.1. The courses are defined in Appendix A and will be signaled by the Signal vessel before the warning signal for each class using a white-board indicating the class designation followed by the respective course letter.
- 8.2. Marks shall be rounded as indicated by the course definitions. Racers shall be aware of the dangers of passing too closely to Stratford Shoal and Falkner Island.
- 8.3. Charles Island Lighted Buoy "16," Welch's Point Nun "2," and Pond Point Shoal Nun "12" shall be passed to seaward.

9. THE START

- 9.1. Classes may be started in any order.
- 9.2. The starting sequence may or may not be a rolling sequence. Each boat should watch for its class flag, which will designate the warning signal for that class. In the case of an announced combined class start, the class flags of the combined classes will be hoisted together.
- 9.3. The starting line is between a staff displaying an orange flag on the Race Committee signal vessel at the starboard end and the course side of the port-end starting mark "S" (the pin end).
- 9.4. Boats not involved in a starting sequence shall keep clear of the starting area and of those boats preparing to start.
- 9.5. If any part of a boat's hull is on the course side of the starting line at her starting signal and she is identified, the race committee will attempt to hail her sail number or broadcast on marine VHF ch 72. Failure to hail her number, failure of her to hear such a hail, or the order in which boats are hailed will not be grounds for a request for redress This changes RRS 62.1(a).
- 9.6. A boat that is OCS and does not restart shall, without a hearing, have 30 minutes added to her elapsed time. With this penalty a boat shall be considered to have started properly for RRS A5.

10. THE FINISH

- 10.1. The finish line is between a staff displaying a blue flag on the Race Committee vessel at the starboard end and the course side of the finish mark Red "4" Buoy Milford Harbor Entrance Channel at the port end.
- 10.2. It is requested that boats hail the race committee on VHF ch. 72 and cell phone 203-710-4857: First, approximately 2 hours prior to approaching the finish line and Second, as they pass either government mark "R12" Pond Point or "R16" Charles Island, depending on the course sailed.
Include in the hail that you are approaching the finish mark, and identify both your vessel and sail number.
- 10.3. In the event that there is no RC boat on station at the finish, each boat shall record their own finish time (GPS clock) when the finish mark is within 75 feet and bears 270 degrees magnetic. This time, along with best estimates of finish times and sail numbers of any boats preceding or following shall be reported to the race committee at phone number 203-710-4857 at the earliest possible time but no later than 1000 EDT Sunday, June 25, 2023.

11. TIME LIMITS

- 11.1. Boats not finished by 0600 Sunday, June 25, 2023 will be scored DNF (Did Not Finish). This modifies RRS 35.

12. HEARING REQUESTS (Protests)

- 12.1. At its first opportunity after finishing or withdrawing, a boat shall notify the Race Committee of its intent to protest another boat, and provide the sail number of the boat to be protested, and receive confirmation verbally or via VHF ch 72 of its intention to file a protest. This adds to RRS 61.
- 12.2. Hearing Requests shall be in writing and shall be delivered to the Race Committee before 1000 EDT Sunday, June 25, 2023.
- 12.3. Notices will be posted as soon as possible before or after the protest time limit to inform competitors of hearings in which they are parties or named as witnesses. Notices of protests by the Race Committee will be posted within the time limit to inform boats of protests under RRS 61.1(b).
- 12.4. Requests for redress and requests to reopen a hearing must be delivered to a Race Committee member within 30 minutes after hearing results or regatta scoring results have been posted. This modifies RRS 62.2 & 66.

13. SCORING

- 13.1. The race will be scored based on Time-On-Time calculation using $650 / (\text{PHRF} + 550)$ as the Time Correction Factor (TCF).

14. SAFETY REGULATIONS

- 14.1. Before racing, boats shall check in with the anchored race committee signal vessel displaying Flag "L", by passing in close proximity with mainsails raised and hailing their sail numbers until acknowledged by the race committee.
- 14.2. A boat that retires from a race shall notify the Race Committee as soon as possible, via hail or via VHF ch 72 or via phone to 203-710-4857.
- 14.3. Note RRS 1.2 Life Saving Equipment: "Each competitor is individually responsible for wearing a personal flotation device adequate for the conditions."

15. INSURANCE

- 15.1. Each participating boat shall hold insurance, including third party liability insurance, and it is the owner or owner's representative's sole and inescapable responsibility to insure that the insurance is in place and is adequate prior to participating in this event.

16. PRIZES

- 16.1. Results will be posted at <https://yachtscoring.com/> as soon as possible following completion of racing. Prizes will be awarded at the Windjammers Sailing Club banquet at the end of the season.

17. RISK STATEMENT

- 17.1. RRS 3 states: 'The responsibility for a boat's decision to participate in a race or to continue to race is hers alone.' By participating in this event each competitor agrees and acknowledges that sailing is a potentially dangerous activity with inherent risks. These risks include strong winds and rough seas, sudden changes in weather, failure of equipment, boat handling errors, poor seamanship by other boats, loss of balance on an unstable platform and fatigue resulting in increased risk of injury. **Inherent in the sport of sailing is the risk of permanent, catastrophic injury or death by drowning, trauma, hypothermia or other causes.** The race organizers, including the Organizing Authority (Windjammers Sailing Club), Race Committee, Protest Committee, race course assistants, and volunteers will not accept any liability for material damage or personal injury, including fatality, sustained in conjunction with or prior to, during, or after the regatta.

Appendix A: Courses

(In order of increasing length)

Course Q (reverse of course R)

Start To:

- Stratford Shoal Green "3" Can,
- Stratford Shoal Red "2" Bell,
- Red/White "NH" whistle at New Haven Harbor outer entrance channel,
- Finish at Red "4" Buoy, Milford Harbor entrance channel.

Leave all Marks to PORT.

Course approx. 30.0 nm

Course R (reverse of course Q)

Start To:

- Red/White "NH" whistle at New Haven Harbor outer entrance channel,
- Stratford Shoal Red "2" Bell,
- Stratford Shoal Green "3" Can,
- Finish at Red "4" Buoy, Milford Harbor entrance channel.

Leave all Marks to STARBOARD.

Course approx. 30.0 nm

Course S

Start To:

- Red/White "NH" whistle at New Haven Harbor outer entrance channel,
- Stratford Shoal Red "2" Bell,
- Stratford Shoal Green "3" Can,
- Green "1" Bell, Housatonic River outer entrance,
- Finish at Red "4" Buoy, Milford Harbor entrance channel.

Leave all Marks to STARBOARD.

Course approx. 30.5 nm

Course T

Start To:

- Red "18" Bell off Bridgeport/Stratford [leave to STARBOARD],
- Red "2" Buoy at Bridgeport entrance channel,
- Red/White "PJ" whistle at Port Jefferson outer entrance channel,
- Red/White "NH" whistle at New Haven Harbor outer entrance channel,
- Finish at Red "4" Buoy, Milford Harbor entrance channel.

Leave all Marks to PORT except Red "18".

Course approx. 42.9 nm

Course U (reverse of course V)

Start To:

- Red "18" Bell off Bridgeport/Stratford [leave to STARBOARD],
- Red "26" Bell off Westport/Norwalk,
- Red/White "PJ" whistle at Port Jefferson outer entrance channel,
- Finish at Red "4" Buoy, Milford Harbor entrance channel.

Leave all Marks to PORT except Red "18".

Course approx. 44.0 nm

Course V (reverse of course U)

Start To:

- Red/White "PJ" whistle at Port Jefferson outer entrance channel,
- Red "26" Bell off Westport/Norwalk,
- Red "18" Bell off Bridgeport/Stratford [leave to PORT],
- Finish at Red "4" Buoy, Milford Harbor entrance channel.

Leave all Marks to STARBOARD except Red "18".

Course approx. 44.0 nm

Course W (reverse of course X)

Start To:

- Stratford Shoal Green "3" Can,
- Stratford Shoal Red "2" Bell,
- Red "10" GI Bell southwest of Falkner Island,
- Red/Green KR Bell east of Falkner Island,
- Green "15" Gong north of Falkner Island,
- Finish at Red "4" Buoy, Milford Harbor entrance channel.

Leave all Marks to PORT.

Course approx. 53.5 nm

Course X (reverse of course W)

Start To:

- Green "15" Gong north of Falkner Island,
- Red/Green KR Bell east of Falkner Island,
- Red "10" GI Bell southwest of Falkner Island,
- Stratford Shoal Red "2" Bell,
- Stratford Shoal Green "3" Can,
- Finish at Red "4" Buoy, Milford Harbor entrance channel.

Leave all Marks to STARBOARD.

Course approx. 53.5 nm

Course Y (reverse of course Z)

Start To:

- Red/White "NH" whistle at New Haven Harbor outer entrance channel,
- Red/White "PJ" whistle at Port Jefferson outer entrance channel,
- Red "26" Bell off Westport/Norwalk,
- Red "18" Bell off Bridgeport/Stratford [leave to PORT],
- Finish at Red "4" Buoy, Milford Harbor entrance channel.

Leave all Marks to STARBOARD except Red "18".

Course approx. 54.0 nm

Course Z (reverse of course Y)

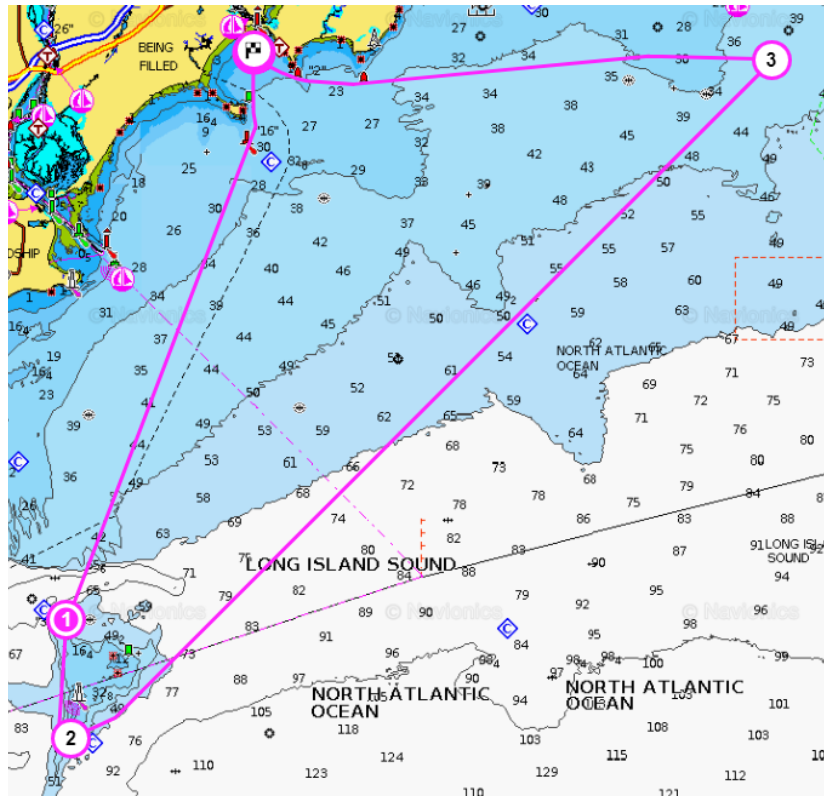
Start To:

- Red "18" Bell off Bridgeport/Stratford [leave to STARBOARD],
- Red "26" Bell off Westport/Norwalk,
- Red/White "PJ" whistle at Port Jefferson outer entrance channel,
- Red/White "NH" whistle at New Haven Harbor outer entrance channel,
- Finish at Red "4" Buoy, Milford Harbor entrance channel.

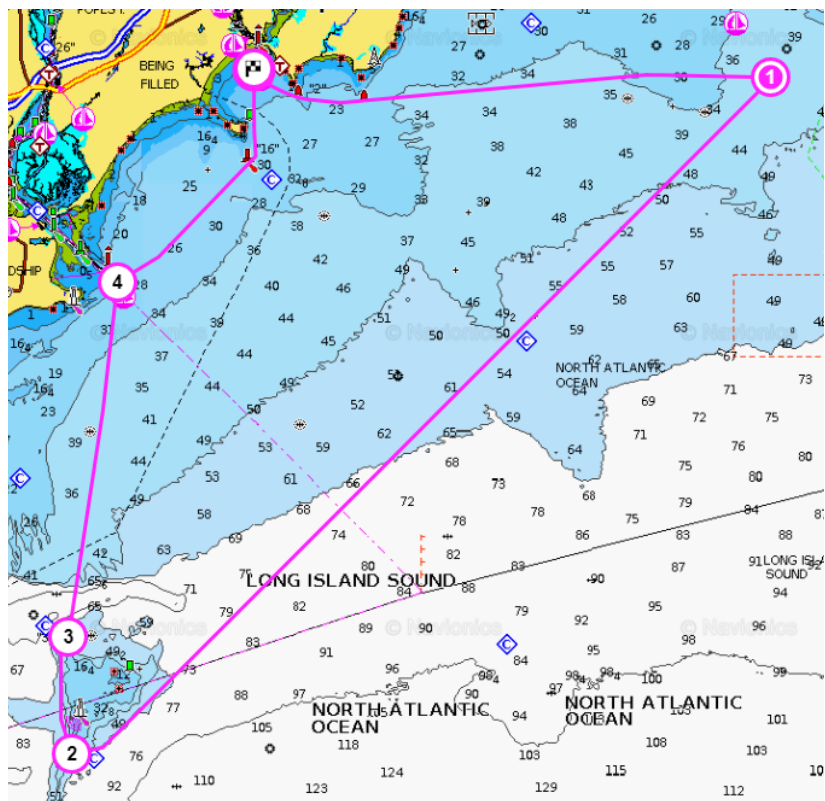
Leave all Marks to PORT except Red "18".

Course approx. 54.0 nm

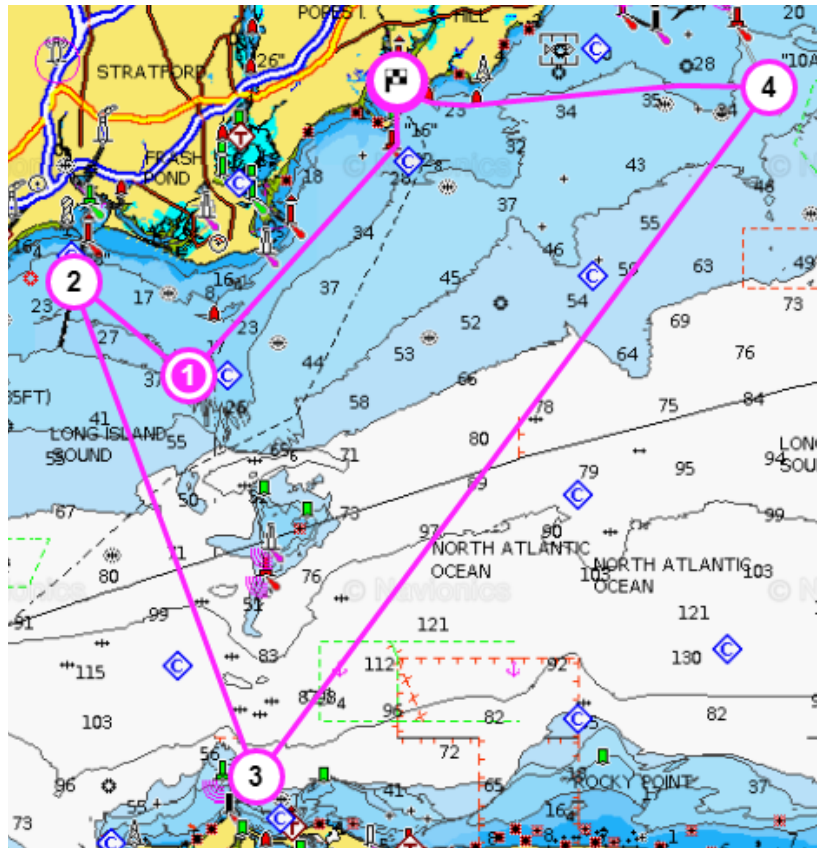
Course Q (Course R is the reverse):



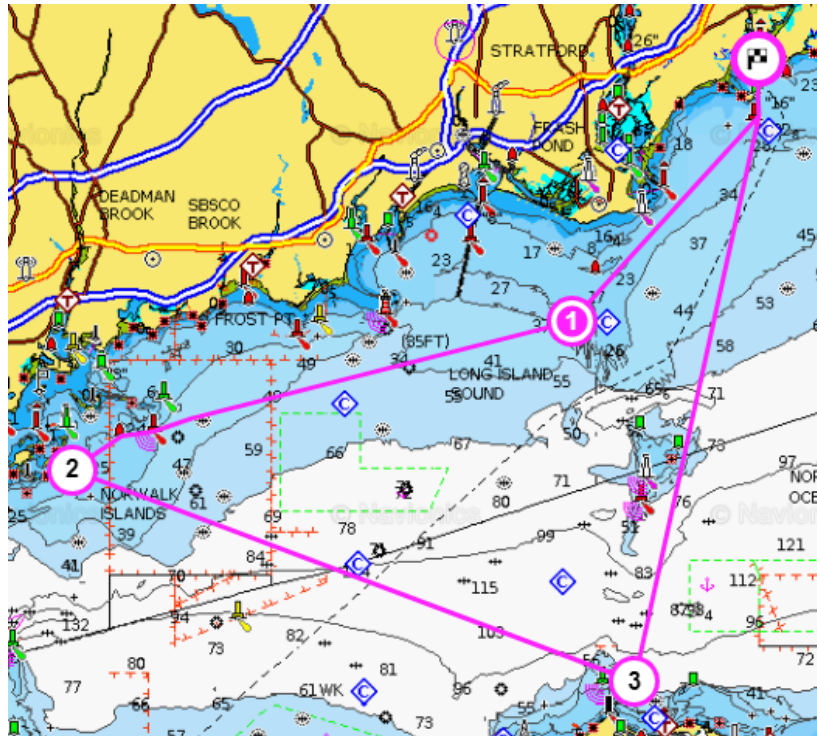
Course S:



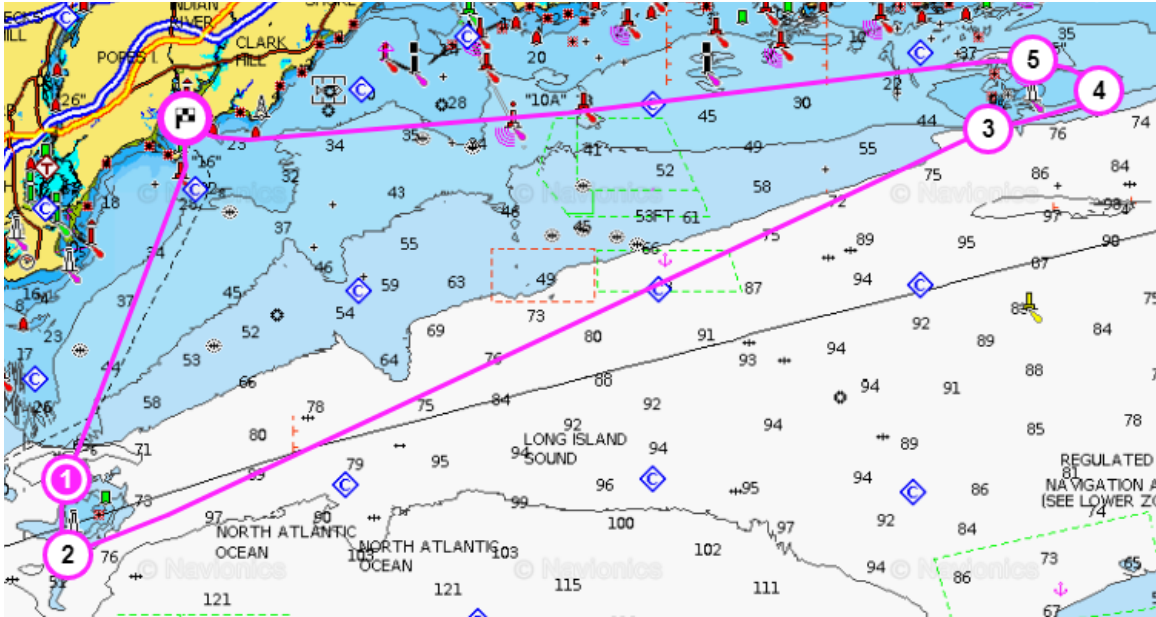
Course T:



Course U (Course V is the reverse):



Course W (Course X is the reverse):



Course Y (Course Z is the reverse):

