



BRISA Cup Regatta 2023

October 13 – 15, 2023

SAILING INSTRUCTIONS

1 RULES

- 1.1 The event will be governed by the rules, as detailed in the *Racing Rules of Sailing*.
- 1.2 Read the NOR and NOR Amendments.
- 1.3 While racing, except in an emergency, a boat shall not make voice or data transmissions and shall not receive voice or data communication that is not available to all boats.

2 NOTICES TO COMPETITORS

- 2.1 Notices to Competitors will be posted on the official noticeboard to be located next to the East Island Excursions ticketing facility (behind La Cueva del Mar) at Safe Harbor - Puerto del Rey Marina.

3 CHANGES to THE SAILING INSTRUCTIONS

- 3.1 Any change to the SI will be posted before 0800 on the day it will take effect, except that any change to the schedule of races will be posted by 2000 on the day before it will take effect.
- 3.2 If necessary, changes to the Sailing Instructions may be given orally on the water [RRS 90.2 (c)]. In the event of oral instructions, the RCV will, following display of code flag Lima with one (1) sound, and provide revised instructions on the designated **VHF channel #71**.

4 SCHEDULE OF RACES

- 4.1 The Skipper's meeting is scheduled for **Friday, Oct 13 at 2000 hr.** at the regatta designated area located next to the East Island Excursions ticketing facility (behind La Cueva del Mar) at Safe Harbor – Puerto del Rey Marina.
- 4.2 The warning signal for the first race on **Saturday, Oct. 14 will be at 1100 hr.**
- 4.3 The warning signal for the first race on **Sunday, Oct.15 will be at 1100 hr.** No warning signal will be hoisted after 1400 hr.
- 4.4 The Race Committee Vessel (start / finish) will be located approximately one mile East of the marina breakwater (L 18° 17.45' N / Lo 65° 36,30'W).
- 4.5 To alert boats that a race or sequence of races will begin soon, the orange starting line flag may be displayed with one sound at least one (1) minute before a warning signal is made.

- 4.6 Multiple back-to-back races will be run each day as time and weather conditions permit it.
- 4.7 The Award Ceremony will be held at the regatta-designated area located next to the East Island Excursions ticketing facility (behind La Cueva del Mar) at the marina on **Sunday, Oct 15 at 1700 hr.**

5 BOATS, SAILS, & FLAGS

- 5.1 Boats will be identified by national letters, numbers or combinations placed on all sails.
- 5.2 The flags colors identifying each class will be posted at the RCV, as follows:

	Class	Color
1	Jib Main A	Dark Purple
2	Jib Main B	White
3	Performance Cruiser	Green
4	RAYA	Yellow

6. - SAILING INSTRUCTIONS AND RACES

- 6.1 These Sailing Instructions and the Notice of Race of the Regatta are published at www.yachtscoring.com.
- 6.2 Competitors can print the SI and the NOR or use them online.

7. - SAFETY

- 7.1 Before the first start of the day, racing boats are required to check-in with the Race Committee Vessel by sailing or motoring by its stern and identifying themselves to the race committee. Check-In by radio is not permitted.
- 7.2 Any boat retiring shall advise the Race Committee at the earliest opportunity.

8. - COURSES

- 8.1 The course number designation for the course to be sailed by each class will be notified by the Race Committee Vessel through numeral pennants and **VHF radio channel 71** no later than the *warning signal* for each class.
- 8.2 The course diagrams and numeral pennants are included in the **Supplement Section** of this SI. They show the courses, the order in which marks are to be passed, and the side on which a mark is to be left. The Supplement may include additional courses.

9. - MARKS

- 9.1 Marks may include temporary inflatable marks and permanent buoys, as illustrated in the Supplement of the SI.
- 9.2 The following inflatable marks may be used: 1 Start and Finish Pins. 2 Leeward Mark located upwind from the Starting Line.
- 9.3 Marks are to be left to PORT, unless specified with (S), for Starboard.

10. THE START

- 10.1 Races will be started by using Rule 26 and vhf radio broadcasts. This changes Rule 26.
- 10.2 When looking up the course, the starting line is between a staff displaying an orange flag on the RCV at the starboard end and the course side of the starting mark pin at the port-end of the starting mark.
- 10.3 Boats whose warning signal has not been made shall avoid the starting area.
- 10.4 The Race Committee will attempt to notify competitors who are OCS on the designated **VHF radio channel #71**. Failure to do so, or failure of a competitor to hear or receive such transmissions will not be grounds for redress. This changes RRS 62.

11. THE FINISH

- 11.1 To complete a race, a boat shall *start, sail the course, and then finish*.
- 11.2 The finishing line for will be between a staff displaying a blue flag at the RCV and the finish mark.
- 11.3 Boats that may have finished shall avoid the finishing area.

12 OBSTRUCTIONS

- 12.1 A buoy may be attached to the RCV stern. Boats shall not pass between this buoy and the RCV at any time. This area is designated as an obstruction. This buoy is not part of the starting mark.
- 12.1 The Start and Finish lines and marks are designated as obstructions.

13. PENALTY SYSTEM

- 13.1 Rule 44.1 is changed so that the Two-Turns Penalty **is replaced** by the *One-Turn Penalty*.

14. TIME LIMIT

- 14.1 Boats failing to finish 15 minutes after the first boat of their class sails the course and finishes will be scored Did Not Finish without a hearing.

15. PROTESTS AND REQUEST FOR REDRESS

- 15.1 Protest forms will be available at the regatta booth located next to the East Island Excursions ticketing facility (behind La Cueva del Mar) at Safe Harbor - Puerto del Rey Marina. Protest and requests for redress or reopening shall be delivered there within the appropriate time limit.
- 15.2 In addition to the requirements of RRS 61, protesting yachts shall inform the Race Committee Signals Vessel of their intention to file a protest as soon as it finishes the race.
- 15.3 The protest time limit is 60 minutes after the last boat in the race finishes.
- 15.4 Notices will be posted no later than 30 minutes after the protest time limit to inform competitors of hearings in which there are parties or named as witnesses. Hearings will be held in the protest room located at the regatta booth located next to the East Island Excursions ticketing facility (behind La Cueva del Mar) at Safe Harbor

16 SCORING

- 16.1 A minimum of one (1) race will constitute a regatta.
- 16.2 When five (5) or fewer races have been completed, a boat's series score will be the total of her race scores.
- 16.3 When from six (6) to ten (10) races have been completed a boats series score will be the total of her series scores excluding her (1) worst score.
- 16.4 When fifteen (15) or more races have been completed a boats series score will be the total of her series scores excluding her two (2) worst scores.

17. – Prizes

- 17.1 Class trophies will be awarded to the first 3 places in each class at the regatta designated area located next to the East Island Excursions ticketing facility (behind La Cueva del Mar) at Safe Harbor.
- 17.2. The BRISA Cup trophy will be awarded to the BRISA member boat achieving the highest place in the CSA Jib and Main class combined.

18. DISCLAIMER OF LIABILITY

- 18.1 Competitors agree to be bound by the International Sailing Federation Racing Rules of Sailing (RRS), by the Sailing Instructions and the Notice of Race. Competitors agree to Take any and all responsibility for the nautical qualities of their vessels, the rigging, the Crew's ability and the safety equipment. Competitors also agree to take any and all Responsibility for damages caused to third persons (bodily injury included but not Limited thereto) or their belongings, to themselves (bodily injury included but not Limited thereto) or to their belongings, ashore and at sea as a consequence of their Participation in the regatta, relieving **BRISA** of any responsibility and all persons involved in the organization under whatever qualification. Competitors are to be acquainted with RRS Part 1 Fundamental Rule "The responsibility for a boat's decision to participate in a race or to continue racing Is hers alone". In any case, competitors agree that BRISA, the sponsors and their agents, have no responsibility for loss of life or injury to members or others or for the loss of, or damage to any vessel or property. As Part of the registration process, each individual participating crewmember will be required to sign a declaration accepting this disclaimer of liability.

18 INFORMATION

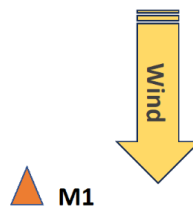
- 18.1 Regatta Chairperson Enid Marie Reyes – comodorobrisaestepr@gmail.com
Regatta Officer – Cpt. Carlos Martinez – cmartine97@gmail.com
Registration for the BRISA Cup Regatta 2023: <http://www.yachtscoring.com>

SUPPLEMENT S1
COURSES BRISA-CUP 2023

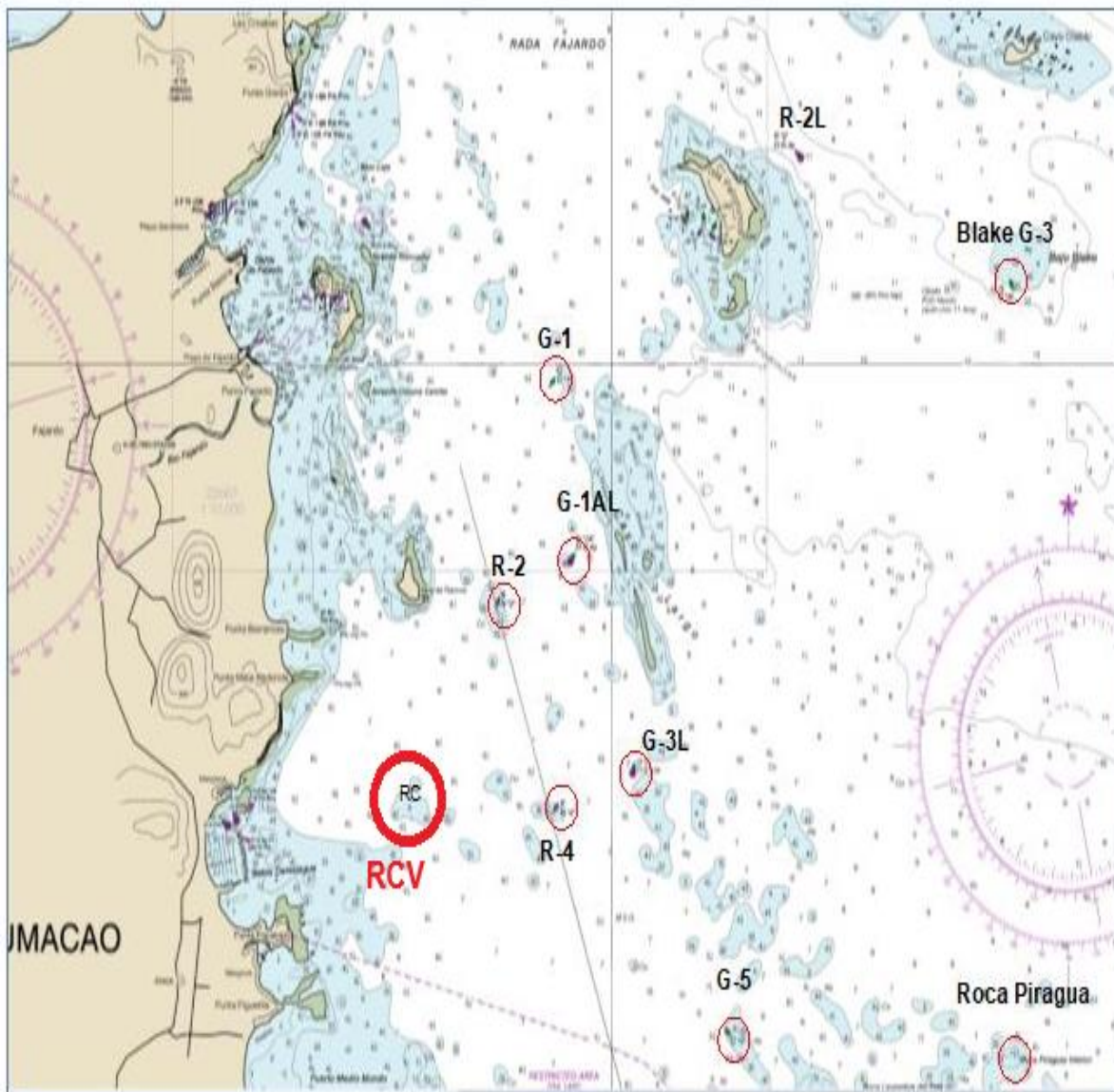
All marks to port.

Course Number	Distance(nm)	Route
1		Start R-4 G-1 Finish
2		Start G-3L Blake G-3 Finish
3		Start M1 Finish
4		Start M1 Blake G-3 Finish
5		Start M1 G-1AL Finish
6		Start Roca Piragua Finish
7		Start G-5 Finish
8		Start G-3L Finish
9		Start R-4 R-2 Finish

Marks Legend:
Permanent Buoys
R-4 Red number 4
G-1 Green number 1
G-3L Green number 3 Lighted
Blake G-3 Green number 3 at Bajo Blake
G-1AL Green number 1A Lighted
G-5 Green number 5
Roca Piragua Large Rock
M1 Tetrahedron Orange Buoy – Windward Mark



BRISA Cup Regatta 2023
Oct 13-15, 2023
Sailing Instructions



Section of NOAA Chart 25663

NUMERAL PENNANTS

