



2023 Whitby 50  
September 15-16, 2023  
Whitby Yacht Club  
Whitby, Ontario, Canada

## **SAILING INSTRUCTIONS (SI)**

*The notation '[NP]' in a rule of the sailing instructions (SI) means that a boat may not protest another boat for breaking that rule. This changes RRS 60.1(a).*

### 1 RULES

- 1.1 In cases of conflict between the Notice of Race, Sailing Instructions and any Class Rules, the Jury will decide which shall govern.
- 1.2 Changes to boat or sails shall be referred to the Principal Race Officer ([wycfleet1@gmail.com](mailto:wycfleet1@gmail.com)).

### 2 CHANGES TO SAILING INSTRUCTIONS

- 2.1 Any change to the sailing instructions will be posted before 1200 on the day it will take effect.
- 2.2 Changes to a sailing instruction may be made on the water by displaying flag L on the race committee signal vessel, relaying instruction change by hail and/or on the VHF radio, and receiving acknowledgment by hail or VHF radio from every boat that comes to the starting area.

### 3 COMMUNICATIONS WITH COMPETITORS

- 3.1 Notices to competitors will be posted on the official notice board located at [https://yachtscoring.com/notice\\_board\\_summary.cfm?eid=16069](https://yachtscoring.com/notice_board_summary.cfm?eid=16069).
- 3.2 On the water, the race committee intends to monitor and communicate with competitors on VHF radio channel 72.
- 3.3 If the Race Committee displays Numeral 2 Pennant, alternate VHF channel 71 will be used.
- 3.4 The following **courtesy** communications may be made by the race committee on VHF radio.
  - Changes to sailing instructions,
  - displaying and removing visual signals,
  - sail numbers of boats breaking RRS 29.1, individual recall
  - general recalls under RRS 29.2, and
  - sail numbers of boats breaking RRS 30.

#### 4 SIGNALS MADE ASHORE

- 4.1 Signals made ashore will be displayed at the flagpole located on the lawn west of the clubhouse. (See NOR Addendum A)
- 4.2 When flag AP is displayed ashore, '1 minute' is replaced with 'not less than 45 minutes' in Race Signals AP.

#### 5 SCHEDULE OF RACES

- 5.1 One long distance race will be started on Friday, September 15, 2023.
- 5.2 The scheduled time of the first warning signal is 1900 h.
- 5.3 The race will not be started in sustained winds less than 3 knots nor in conditions deemed to be unsafe or unfit for Race Committee.

#### 6 CLASS FLAGS AND ORDER OF START

- 6.1 The Class flags and start order are as follows:

<b>Start #</b>	<b>Class</b>	<b>Class Flag</b>
1	PHRF1 FS	Light Blue
1	PHRF1 NFS	Gold
2	PHRF2 FS	Green
2	PHRF2 NFS	White

#### 7 RACING AREA

- 7.1 The Start Area is a pattern of 8 fixed marks radiating from WYC Mark #9, a centre fixed mark located approximately 1.4 nm on a compass bearing of approximately 210 degrees (right) from the Whitby Harbour East Pier Head light. See SI Addendum A.
- 7.2 The Racing Area extends from WYC Mark #9 westerly along the north shore of Lake Ontario. See SI Addendum B.

#### 8 COURSES

- 8.1 The Start Mark will be one of the 8 fixed marks in the perimeter of the Start Area. This mark will be 0.5 nm downwind from WYC Mark #9. This changes NOR 11.1.
- 8.3 The Rounding Mark is WYC Mark #9 (see SI Addendum A). Round this mark such that a string representing the boat's track from the Start Mark to the Turning Mark, when drawn taut, touches WYC Mark #9 but does not cross itself.
- 8.4 The Turning Mark is the Toronto Harbour Outer Approach Light Spar Buoy T2 (see SI Addendum B). Leave this mark to Port. Provide photographic evidence of rounding in accordance with SI 13.

- 8.5 The Finish Mark is WYC Mark #9 (see SI Addendum A and B). Provide photographic evidence of finishing in accordance with SI 13.
- 8.6 The course will not be shortened. This changes RRS 32.
- 8.7 The Turning Mark is not managed by WYC. Absence of the Turning Mark will not be grounds for redress. This changes rule 62.1 (a).
- 8.8 If the Turning Mark is absent, boats shall round the location of the mark given in these Sailing Instructions and submit evidence that they have done so.

## 9 MARKS

### 9.1 Start Area marks are as follows:

Eight fixed yellow or orange barrels approximately 4' in height numbered 1 to 8 and arranged in a 1 nm diameter circle with a centre barrel numbered 9. See SI Addendum A.

- 9.2 WYC Mark #9, the Rounding Mark, is located at the centre of the Start Area and is a tethered polyethylene barrel painted orange with a blue number 9 painted in three places. See SI Addendum A or B for its location.
- 9.3 The Turning Mark is the Toronto Harbour Outer Approach Light Spar Buoy, a red spar marked T2. See SI Addendum B for its expected location.

## 10 THE START

- 10.1 [DP] Before starting its race, a registered boat intending to race shall check-in with the Race Committee by sailing past the stern of the race committee signal vessel with sail number visible and receive acknowledgement. The race committee will not accept reports of intent to start via VHF radio.
- 10.2 There will be two starts as listed in SI 7.1.
- 10.3 Races will be started using RRS 26 with the warning signal made 5 minutes before the starting signal.
- 10.4 The starting line is between a staff displaying an orange flag on the signal vessel at the starboard end and the course side of the Start Mark on the port end.
- 10.5 Boats whose warning signal has not been made shall avoid the starting area during the starting sequence for other races. The starting area extends 200' ahead of and behind the starting line, and 200' beyond either end of the starting line.
- 10.6 If a boat breaks rule RRS 29.1 or RRS 30, the Race Committee will attempt to hail her sail number. Failure to hail her number, failure of her to hear such a hail, or the order in which boats are hailed will not be grounds for a request for redress. This changes RRS 62.1(a).
- 10.7 A boat that does not start within 10 minutes after her starting signal will be

scored Did Not Start (DNS) without a hearing. This changes RRS A5.1 and A5.2.

10.8 The warning signal for each succeeding start shall be at least 1 minute after the starting signal of the preceding start.

10.9 No boat shall hoist its spinnaker until the boat has started and cleared the starting line.

## 11 CHANGE OF THE NEXT LEG OF THE COURSE

11.1 The course will not be changed.

## 12 THE FINISH

12.1 There will be no race committee vessel on station at the finish. Boats are to record and report their own finish time and provide photographic evidence in accordance with SI 13.

12.2 Boats shall finish within two boat lengths and to port of WYC Mark #9 and record their finish time. GPS time (UTC-4hrs) shall be used.

## 13 PHOTOGRAPHIC EVIDENCE

13.1 Applies to rounding the Turning Mark and the Finish Mark.

13.2 When it is safe to do so, photograph the navigation screen showing longitude, latitude, and time of rounding. Alternatively, photograph the Mark itself. Send this photo with metadata intact to [wycfleet1@gmail.com](mailto:wycfleet1@gmail.com) within 60 minutes of rounding. Include photo, boat name, sail number and GPS time.

## 14 PENALTY SYSTEM

14.1 The Scoring Penalty, RRS 44.3, does not apply.

## 15 TIME LIMIT

15.1 The time limit will be 1500 h on Saturday, September 16, 2023. Any boat that has not finished by the time limit will be scored DNF, without a hearing. This changes RRS 35, A5.1 and A5.2.

## 16 HEARING REQUESTS

16.1 The protest time limit is 2 hours after a boat finishes.

16.2 Protests and requests for redress must be entered through the Owner's Corner in [Yacht Scoring](#) before the protest time limit.

16.3 Hearings may be in-person or virtual, and parties will be notified of date and time by email.

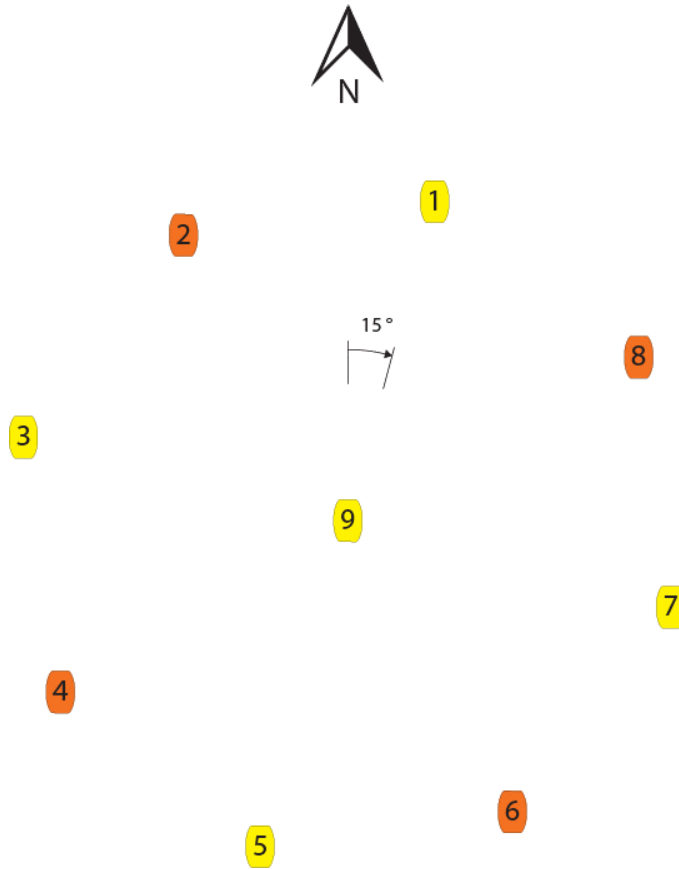
16.4 Protests alleging a breach of a class rule must be accompanied by an official copy of the applicable class rules. This changes RRS 61.2.

16.5 RRS 62.2(a) and 66.2(a) do not apply.

## 17 SAFETY REGULATIONS

- 17.1 [DP] Once a boat has fulfilled her check-in requirements, if she no longer intends to participate in racing, she shall: a) keep clear of other competitors and b) notify the race committee at the first reasonable opportunity.
- 17.2 [DP] A boat that retires from a race shall notify the race committee by VHF radio (channel 72), text message (4162787260) and email ([wycfleet1@gmail.com](mailto:wycfleet1@gmail.com)) at the first reasonable opportunity.
- 17.3 [DP] Boats that have not finished by the Time Limit are asked to report their status to the race committee by VHF radio (channel 72), text message (4162787260) and email ([wycfleet1@gmail.com](mailto:wycfleet1@gmail.com)) at the first reasonable opportunity.
- 17.4 Emergency calls for assistance shall be to the Coast Guard on VHF channel 16, or to emergency services via telephone 911.

Addendum A  
Starting Area Mark Locations and Relative Positions



**MARK LAYOUT**

Approximate diameter 1.0 nm

**MARK CO-ORDINATES**

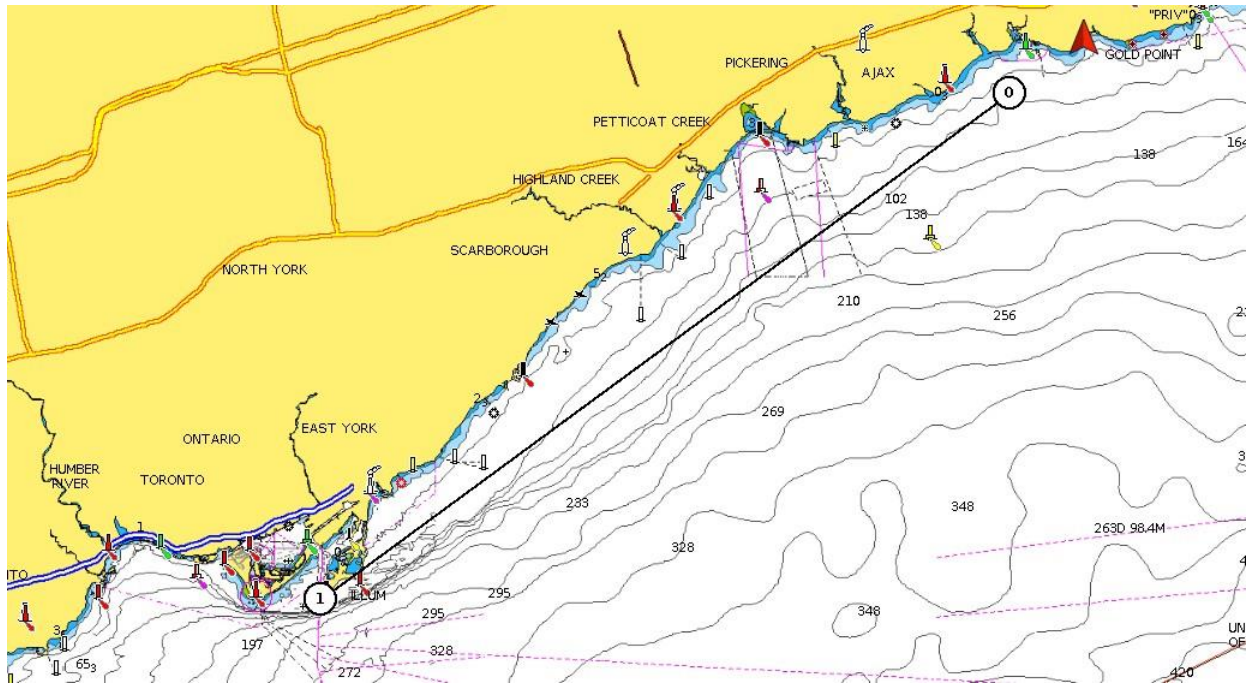
<b>Mark 1</b>	N 43° 50.206'	W 78° 56.210'
<b>Mark 2</b>	N 43° 50.086'	W 78° 56.713'
<b>Mark 3</b>	N 43° 49.744'	W 78° 56.951'
<b>Mark 4</b>	N 43° 49.381'	W 78° 56.784'
<b>Mark 5</b>	N 43° 49.210'	W 78° 56.310'
<b>Mark 6</b>	N 43° 49.330'	W 78° 55.807'
<b>Mark 7</b>	N 43° 49.672'	W 78° 55.569'
<b>Mark 8</b>	N 43° 50.035'	W 78° 55.736'
<b>Mark 9</b>	N 43° 49.708'	W 78° 56.260'

Addendum A  
Starting Area Mark Locations and Relative Positions (cont.)

**COURSE BEARINGS (MAGNETIC)**

Mark	1	2	3	4	5	6	7	8	9
1									195
2									150
3									105
4									060
5									015
6									330
7									285
8									240

## Addendum B - Racing Area



#	Mark	Location	Description
0	Rounding & Finish	N 43° 49.708' W 78° 56.260'	"WYC Mark #9" Tethered polyethylene barrel painted yellow with a blue number 9 painted in three places.
1	Turning	N 43° 36.662' W 79° 20.779'	"T2" [R FL R 4S] Red lateral buoy (shape: spar) having red flashing light with a period of 4 second