

# St Maarten Heineken Regatta

Sint Maarten Heineken Regatta Foundation



**February 28 – March 3, 2024**  
**Racing February 29 – March 3, 2024**

Regatta Village at Port de Plaisance, *Sint Maarten*  
<http://heinekenregatta.com>

**Change 1 : 27 February, 2024**

**Change 2 : 29 February, 2024**

**Change 3 : 1 March, 2024**

**Change 4 : 2 March, 2024**

## SAILING INSTRUCTIONS

The notation '[NP]' in a rule of the sailing instructions (SIs) or notice of race (NoR) means that a boat may not protest another boat for breaking that rule. This changes RRS 60.1(a).

### 1. RULES

- 1.1. The event will be governed by the rules as defined in *The Racing Rules of Sailing*.

### 2. CHANGES TO SAILING INSTRUCTIONS

- 2.1. Any change to the sailing instructions will be posted by 0800 on the day it will take effect, except any change to the schedule of races will be posted by 2000 on the day before it will take effect.

### 3. COMMUNICATION WITH COMPETITORS

- 3.1. Notices to competitors will be posted on the official notice board located at URL: [https://yachtscoring.com/notice\\_board.cfm?eid=16108](https://yachtscoring.com/notice_board.cfm?eid=16108) and may also be posted on the unofficial notice board located at the Regatta Village at Port de Plaisance.
- 3.2. On the water, the race committee intends to monitor and communicate with competitors on the following VHF radio channels:
  - a) Committee Vessel A (Cole Bay) VHF ~~71~~ 74 77
  - b) Committee Vessel B (Simpson Bay) VHF 72
  - c) Finish Vessel (Simpson Bay) VHF 73
  - d) Committee Vessel (Marigot Bay) VHF ~~69~~ 75
- 3.3. The race committee will regularly broadcast its intentions for the day's schedule from one hour before the first scheduled warning signal.
- 3.4. Additionally, the race committee may broadcast time checks prior to the first scheduled warning of each day.



### 4. CODE OF CONDUCT

- 4.1. Competitors and support persons shall comply with reasonable requests from race officials.
- 4.2. Competitors and support persons shall place advertising provided by the organizing authority with care, seamanship, in accordance with any instructions for its use and without interfering with its functionality.

### 5. SIGNALS MADE ASHORE

- 5.1. Signals made ashore will be displayed at the flagpole located at the Regatta Village at Port de Plaisance.
- 5.2. When flag AP is displayed ashore, '1 minute' is replaced with 'not less than 60 minutes' in Race Signals AP.

# St Maarten Heineken Regatta

Sint Maarten Heineken Regatta Foundation



## 6. CLASSES AND CLASS FLAGS

- 6.1. A list of classes and class flags and the appropriate flag will be provided to each boat at registration.
- 6.2. **[NPI]** Class flags provided shall be displayed prominently on the boat at the stern, preferably from the backstay.

## 7. LOCATION, SCHEDULE, AND ORDER OF STARTS

- 7.1. The planned schedule of races, the assignment of classes to racing areas and courses are shown in [ADDENDUM A – ASSIGNMENT OF CLASSES TO RACING AREAS AND COURSES](#).
- 7.2. The order of starts for the first race of the day will be posted by 2000 the day before each day of racing.
- 7.3. Subsequent races will start as soon as possible after the boats in a class have finished the previous race. Planned times of these starts will be announced by the race committee by VHF.
- 7.4. To alert boats that a race or sequence of starts will begin soon, the orange starting line flag may be displayed (with one sound) as an attention signal approximately five minutes before the first warning signal.

## 8. COURSES

- 8.1. The diagrams in [ADDENDUM B – WINDWARD LEEWARD COURSES](#) show the windward leeward courses, the approximate angle between legs, the order in which marks are to be passed, and the side on which each mark is to be left.
- 8.2. The diagrams in [ADDENDUM C – RANDOM LEG COURSES](#) show the courses, including the course signals, the descriptions and approximate locations of the marks, the order in which marks are to be passed, and the side on which each mark is to be left.
- 8.3. The course designation will be displayed on a placard from the signal vessel.
- 8.4. The course axis, compass bearing, and range to the first mark for each class may be communicated by the race committee by VHF.
- 8.5. The course to be sailed for each class may be announced by VHF before the warning for that class and may be transmitted by other electronic means.

## 9. MARKS

- 9.1. The start mark is an inflatable shape.
- 9.2. For courses in [ADDENDUM B – WINDWARD LEEWARD COURSES](#) marks will be as follows:
  - a) Mark 1 is a yellow inflatable shape.
  - b) Mark 2 is a orange inflatable shape.
  - c) Marks 3S and 3P are inflatable shapes.
  - d) The finishing mark is an inflatable shape.
- 9.3. For courses in [ADDENDUM C – RANDOM LEG COURSES](#) the marks will be as shown in [ADDENDUM D – MAP OF RACE MARKS](#), [ADDENDUM E – SCHEDULE OF SEMI-PERMANENT MARKS](#), and [ADDENDUM F – SCHEDULE OF ROCKS, ISLETS, AND ISLANDS OR GROUPS THEREOF](#).
  - a) The finishing mark will be an inflated colored shape.
- 9.4. If a mark is missing and the race committee is unable to replace it in accordance with RRS 34, boats shall round the Lat/Long location of the missing mark listed in the sailing instructions. This modifies RRS 34.
- 9.5. In addition to the provisions to RRS 33, the race committee may announce by VHF any change of mark description.

## 10. AREAS THAT ARE OBSTRUCTIONS

- 10.1. While racing, no part of a boat's hull shall cross the lines or areas listed below and as shown in the diagrams in [ADDENDUM G – AREAS THAT ARE OBSTRUCTIONS](#). These lines or areas rank as obstructions.

# St Maarten Heineken Regatta

Sint Maarten Heineken Regatta Foundation



- a) The entire area of Cole Bay between any yellow cardinal buoy or mark and the shoreline of Cole Bay.
- b) The area of Maho Bay (airport) between any yellow restriction mark and the shoreline of Maho Bay.
- c) The area between mark 05, which is to the west of a submerged rock approximately 0.15nm west of Point Plum, and the nearest shoreline on Point Plum.
- d) The area between Cow and Calf.
- e) The area between the Hen and Chickens of the Poulets.
- f) The area between Molly Beday West and East.
- g) The area between Rocher Creole and the nearest shoreline on St Martin.

## 11. THE START

- 11.1. Upwind Starts – The starting line is between a staff displaying an orange flag on the signal vessel at the starboard-end and the course side of the port-end starting mark.
- 11.2. Downwind Starts – The starting line is between a staff displaying an orange flag on the signal vessel at the port-end and the course side of the starboard-end starting mark.
- 11.3. Boats whose warning signal has not been made shall avoid the starting area during the starting sequence for other races.
- 11.4. A boat that does not start within 10 minutes after the last starting signal in a sequence of consecutive starts in which her class started will be scored Did Not Start without a hearing. This changes RRS A5.1 and A5.2.

## 12. THE FINISH

- 12.1. The finishing line is between a staff displaying a blue flag on the signal vessel at the starboard end and the course side of the port-end finishing mark.

## 13. RACE TIME LIMIT

- 13.1. If no boat *starts, sails the course and finishes* by 1645, (1445 on the last day), the race will be abandoned.
- 13.2. Boats failing to *finish* by 1645, (1445 on the last day), after the first boat *starts, sails the course and finishes* will be scored in accordance with NoR 13.4. This changes RRS 35, A5.1 and A5.2.
- 13.3. The race committee may assign a finish position to the last finisher(s) in a class provided that their position can be determined in a reasonable manner. A boat whose finish position has been so established will be notified by the race committee.

## 14. PROTESTS AND REQUESTS FOR REDRESS

- 14.1. ~~For each classes, The~~ protest time limit is two hours after the last boat has finished the last race of the day or the race committee signals no more racing today, whichever is later. Bridge opening times and the return of boats to moorings will not normally be considered as a reason to extend a protest time limit.
- 14.2. Hearing request forms are available at URL: [https://yachtscoring.com/notice\\_board.cfm?eid=16108](https://yachtscoring.com/notice_board.cfm?eid=16108), or at the protest desk, located at the venue.
- 14.3. Notices will be posted no later than 30 minutes after the protest time limit to inform competitors of hearings in which they are parties or named as witnesses. Hearings will be held in the protest room, located at the venue beginning at the time posted.
- 14.4. When all parties are present at the protest desk, every reasonable effort will be made to begin arbitration under RRS Appendix T, or to hold a hearing as soon as possible, even if it is prior to the posted hearing time.
- 14.5. The jury may impose a discretionary penalty for breaches of rules, except for breaches of Part 1, Part 2 and rule 31 of the racing rule of sailing. The St Maarten Heineken Regatta Discretionary Penalties Guidelines shall be used. This changes RRS 64.2.
- 14.6. Decisions of the international jury will be final as provided in RRS 70.5.

# St Maarten Heineken Regatta

Sint Maarten Heineken Regatta Foundation



## 15. SAFETY REGULATIONS

- 15.1. No boat shall race with an anchor overhanging the bow or forward crossbeam. Written application made prior to the close of registration for exemption from this requirement may be made to the race committee, who may, at their sole discretion, grant exemption from this instruction and the associated regulation in the St. Maarten Heineken Regatta Safety and Equipment Regulations.
- 15.2. A boat that does not intend to finish a race, or retires from a race after breaking a rule, shall notify the race committee by VHF before leaving the race area or by telephoning or emailing the race committee Desk: email [rc@heinekenregatta.com](mailto:rc@heinekenregatta.com) telephone +1 721-585-1213

## 16. EQUIPMENT AND MEASUREMENT CHECKS

- 16.1. A boat or her equipment may be inspected at any time for compliance with the *rules* by a member of the technical committee.
- 16.2. On the water, a boat instructed by a member of the technical committee to proceed to a designated area for inspection shall comply with those instructions.

## 17. USE OF ENGINE OR OTHER MEANS OF PROPULSION IN ACCORDANCE WITH RRS 42.3 (I)

- 17.1. A boat may use her propulsion engine to get clear for safety reasons and/or to clear the starting line before the next start. She shall stop using the engine for propulsion as soon as she is clear. She need not retire but shall instead report the use of her engine to the International Jury within the protest time limit. The jury may, following a hearing, take any action it deems appropriate.

## 18. RISK STATEMENT

RRS 3 states: 'The responsibility for a boat's decision to participate in a race or to continue to race is hers alone.' By participating in this event each competitor agrees and acknowledges that sailing is a potentially dangerous activity with inherent risks. These risks include strong winds and rough seas, sudden changes in weather, failure of equipment, boat handling errors, poor seamanship by other boats, loss of balance on an unstable platform and fatigue resulting in increased risk of injury. **Inherent in the sport of sailing is the risk of permanent, catastrophic injury or death by drowning, trauma, hypothermia or other causes.**

# St Maarten Heineken Regatta

Sint Maarten Heineken Regatta Foundation

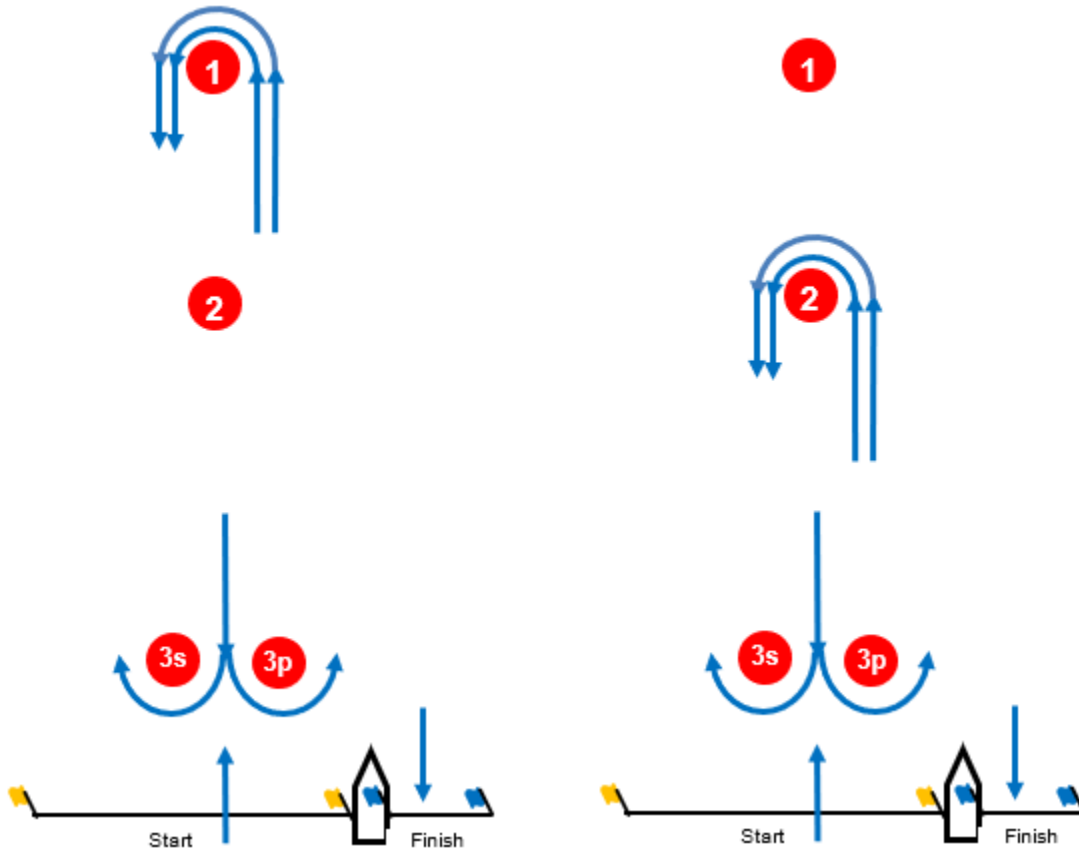


## ADDENDUM A – ASSIGNMENT OF CLASSES TO RACING AREAS AND COURSES

The planned schedule of races, class start vessel assignments, [order of starts for the first race each day](#), and the [courses for each race](#) will be published as a [general notice](#) for each day once fleet splits and the weather forecast becomes clear.

## ADDENDUM B – WINDWARD LEEWARD COURSES

### Windward-Leeward Course (course A and C diagrams)



**Course #**

**Legs**

### Mark Rounding Order

*marks 1 & 2 rounded to port, mark 3 is a gate*

<b>A</b>	4 legs	Start – 1 – 3s/3p – 1 – Finish (RC)
<b>B</b>	4 legs	Start – 1 – 3s/3p – 2 – Finish (RC)
<b>C</b>	4 legs	Start – 2 – 3s/3p – 2 – Finish (RC)

# St Maarten Heineken Regatta

Sint Maarten Heineken Regatta Foundation



## ADDENDUM C – RANDOM LEG COURSES

The planned courses, schedule of races, class start vessel assignments, will be published as a change to these sailing instructions once fleet splits and the weather forecast becomes clearer.

The courses and their numbers will be posted for each day as soon as they are settled but no later than 2000 the day before they will be used.

The current plan is to have races as follows:

Thursday	East towards St Barts
Friday	Around the Island
Saturday	West and North towards Anguilla and Marigot Bay
Sunday	West and North towards Anguilla

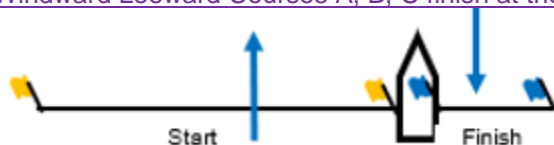
1. Cole Bay courses start in Cole Bay and finish in Simpson Bay or Marigot Bay
2. Simpson Bay courses start and finish in Simpson Bay or Marigot Bay
3. Marigot Bay courses start in Marigot Bay and finish in Simpson Bay or Marigot Bay
4. Mark H will be set to windward of the start line.
5. The distance and magnetic bearing to Mark H will be announced on the race area VHF channel.
6. All distances are in nautical miles.
7. Marks shall be rounded to port unless indicated (s) which should be rounded to starboard.

### COURSE NUMBERING

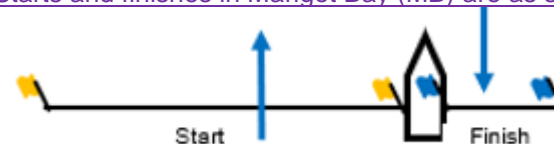
- Courses A, B, C are windward leeward courses.
- Courses 1-19 and 41-59 are from the start area in the general direction of St Barts.
- Courses 21-29 and 61-69 are from the start area in the general direction of Anguilla.
- Courses 31-39 and 71-79 are round the island.
- Courses 81-89 are courses that start in Marigot Bay and finish in either Marigot Bay or Simpson Bay.

### FINISH LINE

- Windward Leeward Courses A, B, C finish at the start boat as shown below.



- Starts and finishes in Marigot Bay (MB) are as shown below



# St Maarten Heineken Regatta

Sint Maarten Heineken Regatta Foundation



## COLE BAY COURSES

Course	Cole Bay Distance	Mark Rounding Order
<b>01</b>	8.8	Start (CB - Cole Bay), 10, Finish (SB – Simpson Bay)
<b>02</b>	10.7	Start (CB - Cole Bay), Pelican Rock, Finish (SB – Simpson Bay)
<b>03</b>	12.0	Start (CB - Cole Bay), 09, Pelican Rock, Finish (SB – Simpson Bay)
<b>04</b>	14.4	Start (CB - Cole Bay), 11, Finish (SB – Simpson Bay)
<b>09</b>	25.7	Start (CB), Ile Tintamarre, Finish (SB)
<b>21</b>	9.7	Start (CB – Cole Bay), H(s), 16(s), 02, 15, Finish (SB – Simpson Bay)
<b>22</b>	14.9	Start (CB – Cole Bay), H(s), 16(s), 03, 15, Finish (SB – Simpson Bay)
<b>28</b>	28.1	Start (CB – Cole Bay), H(s), 16(s), 04(s), 05(s), 17, 06, 03, 15, Finish (SB – Simpson Bay)
<b>29</b>	14.7	Start (CB – Cole Bay), H(s), 16(s), 04(s), 05(s), Marigot Light(s), Finish (MB – Marigot Bay)
<b>31</b>	28.1	Start (CB - Cole Bay), 04(s), 05(s), St Maarten(s), Finish (SB – Simpson Bay)

## SIMPSON BAY COURSES

Course	Simpson Bay Distance	Mark Rounding Order
<b>41</b>	10.4	Start (SB – Simpson Bay), 10, Finish (SB – Simpson Bay)
<b>42</b>	12,2	Start (SB – Simpson Bay), Pelican Rock, Finish (SB – Simpson Bay)
<b>43</b>	13.6	Start (SB – Simpson Bay), 09, Pelican Rock, Finish (SB – Simpson Bay)
<b>44</b>	16.0	Start (SB – Simpson Bay), 11, Finish (SB – Simpson Bay)
<b>61</b>	7.4	Start (SB – Simpson Bay), H(s), 12(s), 02, 15, Finish (SB – Simpson Bay)
<b>62</b>	12.6	Start (SB – Simpson Bay), H(s), 12 (s), 03, 15, Finish (SB – Simpson Bay)
<b>63</b>	16.3	Start (SB – Simpson Bay), H(s), 12 (s), 04(s), 05(s), 07, 03, 15, Finish (SB – Simpson Bay)
<b>65</b>	17.3	Start (SB), H(s), 12 (s), 04(s), 05(s), Marigot Light, 05, 03, 15, Finish (SB)
<b>66</b>	21.6	Start ((SB-Simpson Bay), H(s), 12 (s), 04(s), Blowing Rock, 03, 15, Finish (SB-Simpson Bay)
<b>71</b>	26.0	Start (SB – Simpson Bay), 04(s), 05(s), St Maarten(s), Finish (SB – Simpson Bay)

# St Maarten Heineken Regatta

Sint Maarten Heineken Regatta Foundation



## MARIGOT BAY COURSES

Course	Marigot Bay Distance	Mark Rounding Order
<b>81</b>	11.0	Start (MB – Marigot Bay), Marigot Light, 03, 15, Finish (SB – Simpson Bay)
<b>82</b>	2.0	Start (MB – Marigot Bay), Marigot Light, Finish (MB – Marigot Bay)

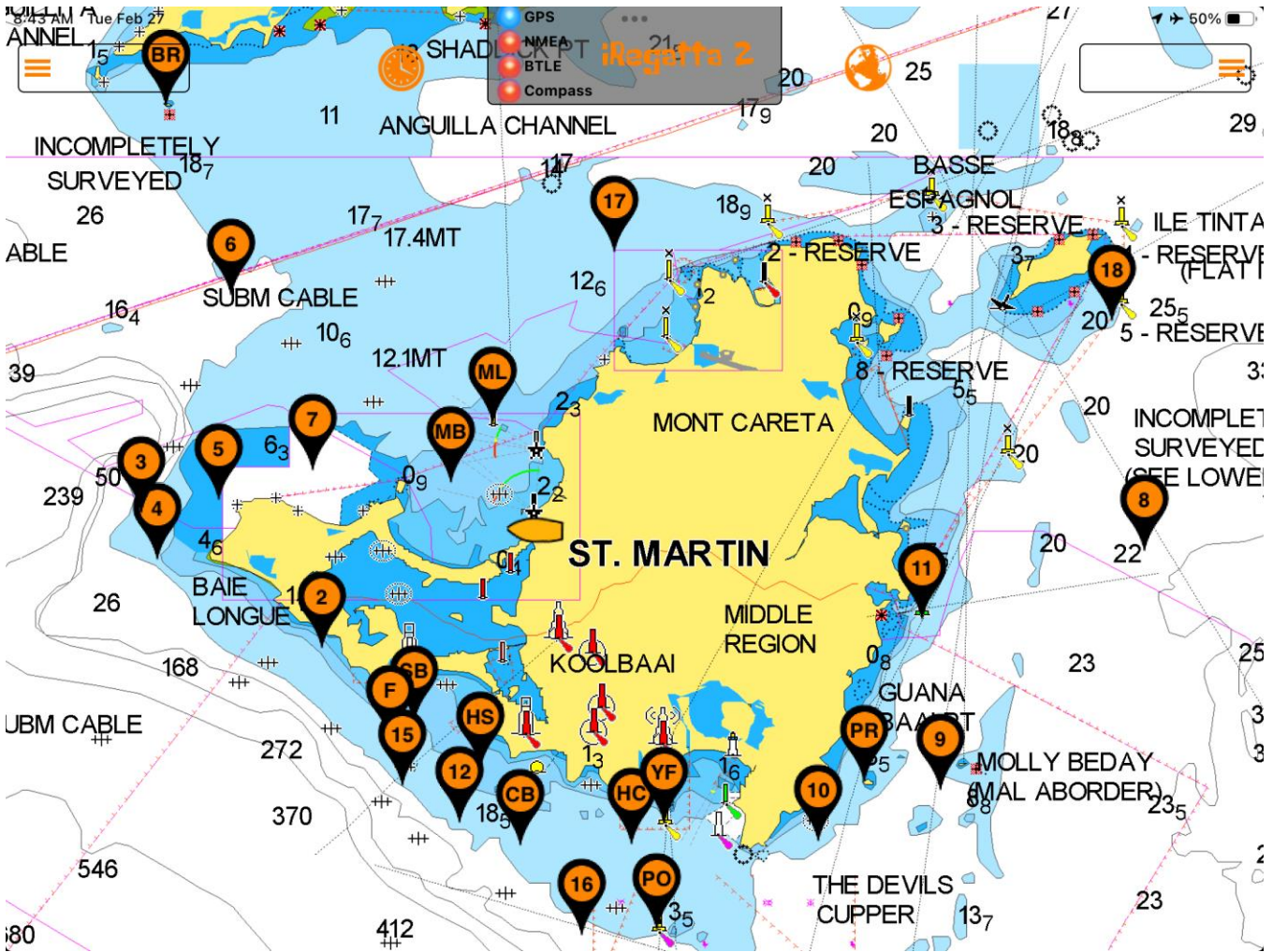


# St Maarten Heineken Regatta

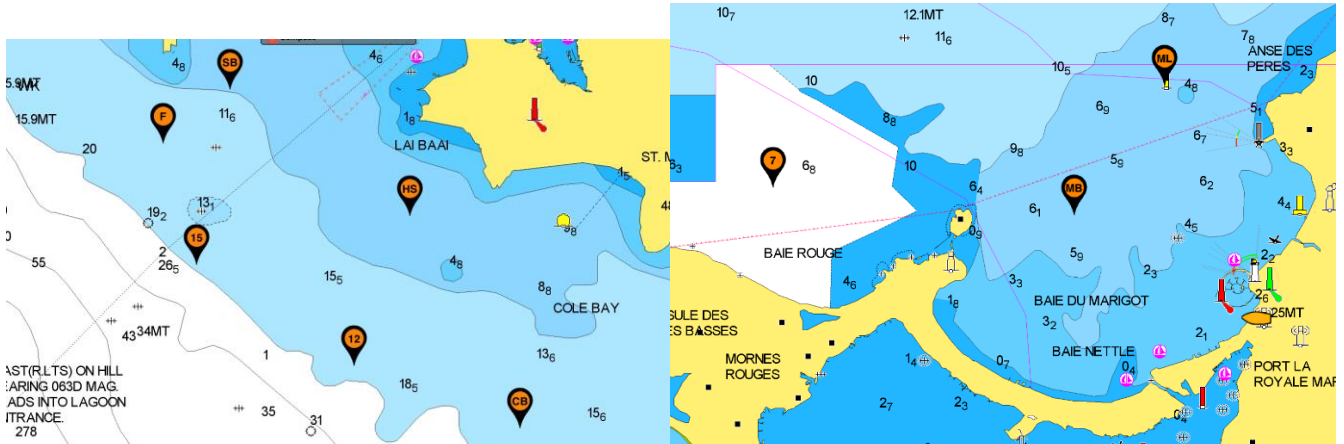
Sint Maarten Heineken Regatta Foundation



## ADDENDUM D – MAP OF RACE MARKS



**SIMPSON BAY START & FINISH AREAS AND MARIGOT BAY START & FINISH AREAS**



# St Maarten Heineken Regatta

Sint Maarten Heineken Regatta Foundation



## ADDENDUM E –SCHEDULE OF SEMI-PERMANENT MARKS

The race committee will attempt to set the marks listed below using the stated colors. However, it may be necessary to use a different color if a mark has to be replaced.

MARK	Mark Description	Latitude	Longitude
Start SB	Simpson Bay Start. Orange inflatable shape	18° 01.800'N	63° 06.650'W
Mark H SB	Approx. 0.7nm to windward of Start (SB).		
Start CB	Cole Bay Start. Orange inflatable shape	18° 00.350 'N	63° 05.350'W
Mark H CB	Approx 1.2nm to windward of Start (CB).		
Start MB	Marigot Bay Start. Orange inflatable shape	18° 04.600 'N	63° 06.200'W
Finish	Simpson Bay Finish. Yellow inflatable shape	18° 01.570'N	63° 06.950'W
02	Orange inflatable shape	18° 02.667'N	63° 07.780W
03	Yellow inflatable shape	18° 04.250'N	63° 10.000W
04	Orange inflatable shape	18° 03.700'N	63° 09.800W
05	Yellow inflatable shape.	18° 04.400'N	63° 09.050W
06	Orange inflatable shape	18° 06.800'N	63° 08.900W
07	Orange inflatable shape	18° 04.750'N	63° 07.900W
08	Orange inflatable shape	18° 03.800'N	62° 57.700W
09	Orange inflatable shape	18° 01.000'N	63° 00.200W
10	Orange inflatable shape	18° 00.400'N	63° 01.700W
11	Orange inflatable shape approx 0.25nm SE of Oyster Pond	18° 03.000'N	63° 00.425'W
12	Yellow inflatable shape	18° 00.617'N	63° 06.093W
15	Orange inflatable shape	18° 01.050' N	63° 06.800'W
16	Yellow inflatable shape	17° 59.300'N	63° 04.600'W
17	Orange inflatable shape	18° 07.300'N	63° 04.200W
18	Yellow inflatable shape	18° 06.500'N	62° 58.100W
Marigot Light (ML)	West cardinal buoy	18° 05.300'N	63° 05.690'W

# St Maarten Heineken Regatta

Sint Maarten Heineken Regatta Foundation



## ADDENDUM F – SCHEDULE OF ROCKS, ISLETS, AND ISLANDS OR GROUPS THEREOF

1. It is a boats responsibility to ensure they have sufficient water depth to safely round or pass marks and rocks. Competitors should use their own charts for navigation.
2. Locations and distances, when given are approximate.

MARK	Mark Description	Latitude	Longitude
Ile Fourche	Rocky island approx. 2 km x 1 km Avoid a shallow area. South east in the bay.	17° 57.510'N	62° 54,000'W
Ile Tintamarre	Island NE of St Martin approx. 2.5 km x 1 km	18° 07.200'N	62° 58.780'W
Blowing Rock ( <a href="#">BR</a> )	Rock approx. 125m x 100m	18° 09.020'N	63° 09.700'W
Pelikan Rock	Pelikan Rock (Guana Cay) Rock approx 250m x 150m	18° 01.100'N	63° 01.130'W
St Barts	St Barthelemy.		
Table Rock ( <a href="#">TR</a> )	Rock approx, 200m x 100m	17° 58.400'N	62° .55,560'W

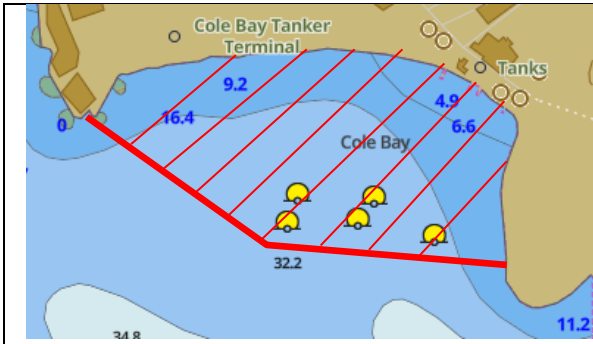
# St Maarten Heineken Regatta

Sint Maarten Heineken Regatta Foundation

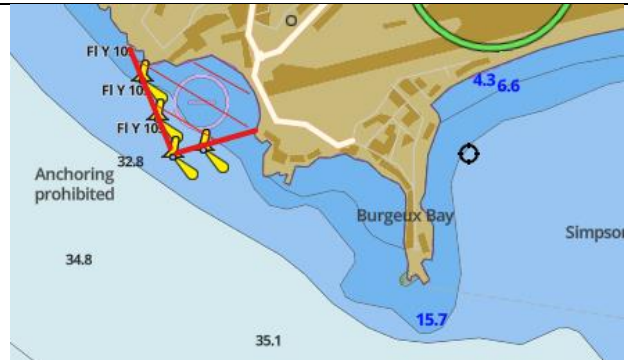


## ADDENDUM G – AREAS THAT ARE OBSTRUCTIONS

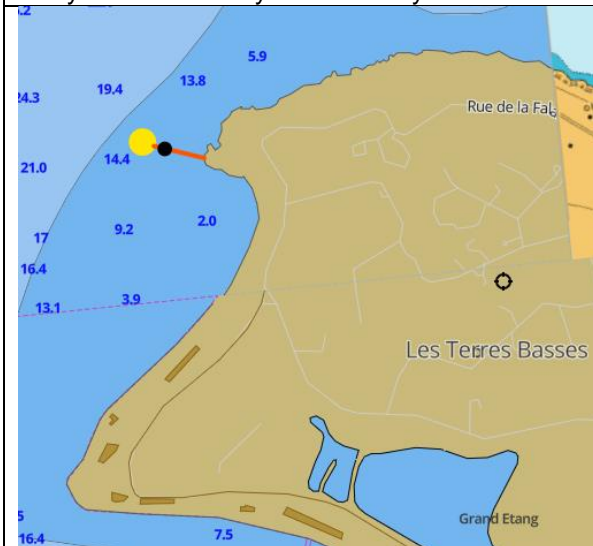
These lines or areas rank as obstructions, are the limit of safe pilotage and boats shall not cross these lines while racing.



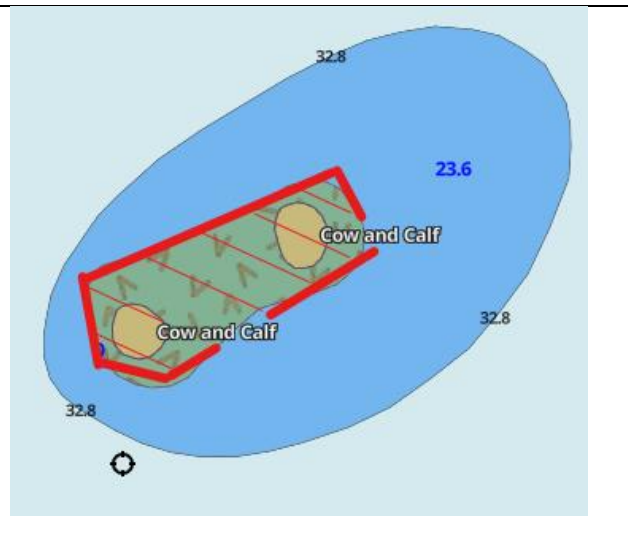
The entire area of Cole Bay between any yellow cardinal buoy or mark and the shoreline of Cole Bay. All boats are to stay at least 100 meters away from ANY buoys in Cole Bay.



The area of Maho Bay (airport) between any yellow restriction mark and the nearest shoreline.



The area between mark 05, which is to the west of a submerged rock approximately 0.15nm west of Point Plum and the nearest shoreline on Point Plum.



The area between Cow and Calf.

# St Maarten Heineken Regatta

Sint Maarten Heineken Regatta Foundation



<p>The area between the Molly Beday West and East.</p>	<p>The area between the Hen and Chickens of the Poulets</p>
<p>The area between Rocher Creole and the nearest shoreline on St Martin.</p>	