



# **Sayville Yacht Club Charity Regatta**

## **August 19<sup>th</sup> and 20<sup>th</sup>, 2023**

### **Sailing Instructions**

#### **1 RULES**

- 1.1. The Regatta will be governed by the *Rules* as defined in *The Racing Rules of Sailing*.
- 1.2. In the event of a conflict between the Notice of Race and these sailing instructions, these instructions will govern.

#### **2 NOTICES TO COMPETITORS**

Notices to competitors will be posted on the official notice board located at the bottom of the main staircase at the SYC clubhouse.

#### **3 CHANGES TO SAILING INSTRUCTIONS**

- 3.1. Any change to the sailing instructions will be posted before 0900 on the day it will take effect except that any change to the schedule of races will be posted by 2000 on the day before it will take effect.
- 3.2. Changes to the sailing instructions may be made on the water. Any such change will be signaled by display of flag "Lima" (L – Come within hail) from the race committee signal boat.

#### **4 SIGNALS MADE ASHORE**

- 4.1. Signals made ashore will be displayed at the SYC main flagpole. When flag AP is displayed ashore, 'one minute' is replaced with 'not less than thirty minutes' in the race signal AP.
- 4.2. A competitors' meeting will be held on the main deck at SYC at 1200 on Saturday, August 19th

=====

### **NOTE - Sections 5 through 15 Pertain to the One Design Fleet**

#### **5 SCHEDULE OF RACES – (One Design Fleet)**

5.1. Schedule:

<b>Date</b>	<b>Time</b>	<b>Event</b>
Thursday, August 17	1845	Practice race
Friday, August 18		No events planned
Saturday, August 19	1100	Skippers' meeting
	1230	First warning signal
Sunday, August 20	1130	First Warning signal
	1500	No warning signals after this time

5.2. Seven (7) races are scheduled, of which a minimum of one race must be completed to constitute a regatta.

**6 CLASS FLAG – (One Design Fleet)**

- 6.1. The Viper 640 Class flag will be a green flag.
- 6.2. The J24 Class flag will be a white flag with a blue J24 logo.

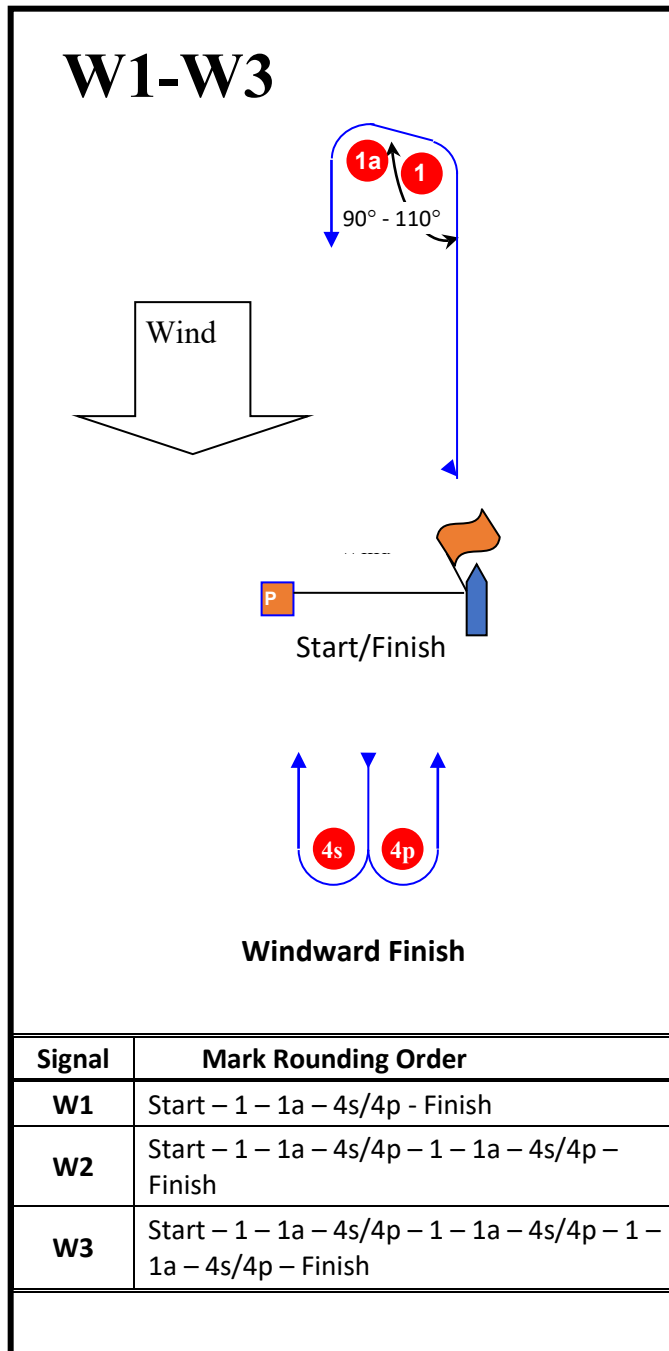
**7 RACING AREA**

The racing area will be in the Great South Bay, south of Sayville Yacht Club in Blue Point.

**8 THE COURSES – (One Design Fleet)**

- 8.1. The course diagram below shows the One Design Fleet courses, including the approximate angle between legs, the order in which marks are to be passed and the side on which each mark is to be left.
- 8.2. Course “W” may be sailed one, two, or three laps. The number of laps will be displayed on the board.
- 8.3. The starting and finishing line may be disregarded except when starting or finishing.

**Course W1 -W3**



**9 MARKS – (One Design Fleet)**

- 9.1. Original marks will be orange inflatables.
- 9.2. Change marks will be yellow inflatables.

**10 THE START – (One Design Fleet)**

- 10.1. The races will be started using Rule 26.
- 10.2. The starting line will be between a staff displaying an orange flag on the race committee Signals boat at the starboard end and an orange inflatable mark at the port end.
- 10.3. The following information will be displayed on a board on the race committee Signal boat:
  - the course identification (course W1, W2 or W3),
  - the approximate distance from the starting line to windward mark 1,
  - the approximate compass bearing from the starting line to windward mark 1.

**11 CHANGE OF THE NEXT LEG OF THE COURSE – (One Design Fleet)**

To change the next leg of the course, the race committee will lay a Change mark (or move the finishing line) and remove the original mark as soon as practicable. If, in a subsequent course adjustment, a Change mark is replaced, it will be replaced by the original mark.

**12 THE FINISH – (One Design Fleet)**

The finishing line will be between a staff displaying an orange flag on the race committee Signals boat at the starboard end and an orange inflatable mark at the port end.

**13 TIME LIMITS – (One Design Fleet)**

If no boat sails the course and finishes within sixty (60) minutes, that race will be abandoned.

**14 PROTESTS AND REQUESTS FOR REDRESS – (One Design Fleet)**

- 14.1 The protest time limit is sixty (60) minutes after the committee boat has docked.
- 14.2 Protest forms are available at the race office. Completed protests must be delivered there within the protest time limit.
- 14.3 Notices will be posted within 30 minutes after the protest time limit to inform competitors of hearings in which they are parties or named as witnesses, as well as the location(s) of the hearings.
- 14.4 Decisions of the protest committee will not be subject to appeal (RRS 70.5b)

**15 SCORING – (One Design Fleet)**

The Low Point Scoring System, Appendix A2, will be used except modified so there will be one throw out when four (4) or more races have been sailed.

**16 Safety – (One Design Fleet)**

A personal flotation device is recommended to be worn (must be worn by Viper 640 Class as per class rules), properly fastened, at all times while launching and when sailing, except temporarily while changing clothes. Failure to comply with this rule may result in disqualification.

=====

**NOTE - Sections 17 through 20 Pertain to the PHRF Fleet**

**17 COURSE– (PHRF Fleet)**

- 17.1. PHRF courses are shown in Appendix A.
- 17.2. PHRF boats will sail a pursuit-type race using the course (PHRF Course 1 or PHRF Course 2) announced at the skippers' meeting.
- 17.3. PHRF course marks will be government marks, except that the start and finish line marks will be an orange inflatable buoy and the SYC dock.

**18 THE START – (PHRF Fleet)**

- 18.1. The Start Line will be between an Orange inflatable mark and the Dock of the Saville Yacht Club.
- 18.2. PHRF boats will start from the west side of the line.
- 18.3. The times at which PHRF boats are to start will be announced at the skippers' meeting. Each boat will be responsible for starting at her correct time utilizing GPS synchronized time.

**19 THE FINISH – (PHRF Fleet)**

- 19.1 The Finish line will be between an Orange inflatable mark and the Dock of the Saville Yacht Club.
- 19.2 PHRF boats will finish from the east side of the line.
- 19.3 Upon crossing the finish line, each PHRF boat will be responsible for recording her own finishing position (if known) and for recording her own finishing time utilizing GPS synchronized time.

**20 Safety – (PHRF Fleet)**

- 20.1 The Race Committee will monitor VHF channel 71.
- 20.2 If a PHRF boat retires, she shall promptly hail the RC on the monitored channel.

=====

**21 Measurement and Equipment – (All Fleets)**

Each competitor is responsible for ensuring their equipment is in compliance with the Class rules.

**22 PRIZES – (All Fleets)**

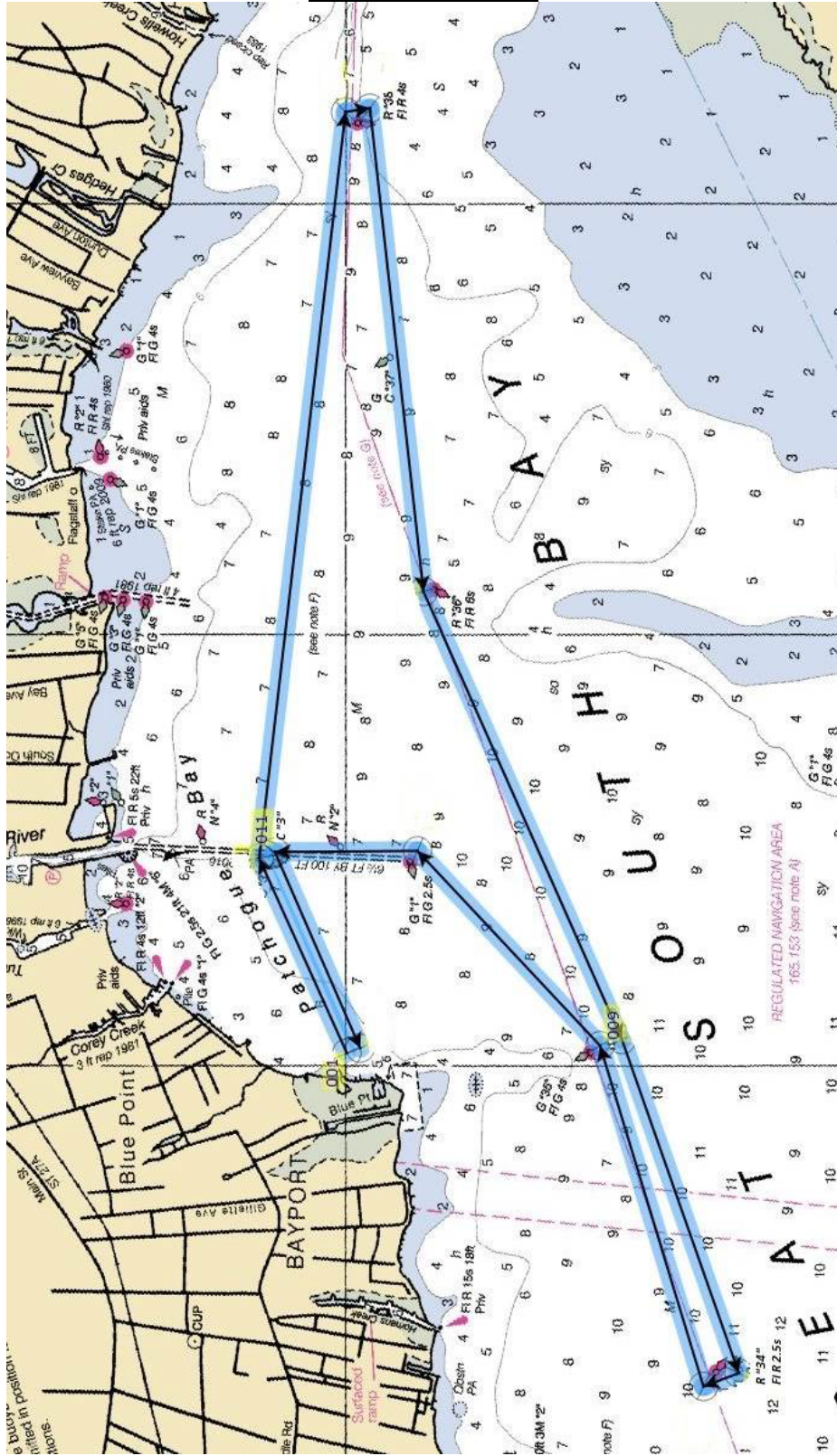
Prizes will be awarded as described in the NOR.

**23 DISCLAIMER OF LIABILITY – (All Fleets)**

Competitors participate in the regatta entirely at their own risk. (See RRS 4, Decision to Race.) The organizing authority, the Sayville Yacht Club, its employees and volunteers supporting this regatta will not accept any liability for material damage or personal injury or death sustained in conjunction with or prior to, during, or after this regatta.

# APPENDIX A - PHRF Courses

## PHRF Course 1



# PHRF Course 2

