



2024 Shark 24 World Championship
Whitby Yacht Club
Whitby, Ontario, Canada
September 7-13, 2024



Supplemental Sailing Instructions (Numbering corresponds to the RRS Appendix S)

Amendment 1, Posted 2024/09/07

Amendment 2, Posted 2024/09/10

Amendment 3, Posted 2024/09/12

The notation '[NP]' in a rule means that a boat may not protest another boat for breaking that rule. This changes RRS 60.1(a).

4 SIGNALS MADE ASHORE

- 4.2 Signals made ashore will be displayed at the flagpole located on the lawn west of the clubhouse. (See NoR Addendum A.)
- 4.3 When flag AP is displayed ashore, '1 Minute' is replaced by 'not less than 45 minutes' in Race Signals AP.

5 SCHEDULE OF RACES

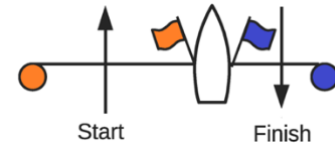
5.3

Day	Date	Type	Type	Type
1	Sun, Sept 8	Practice Race		
2	Mon, Sept 9	Course Race	Course Race	Course Race
3	Tue, Sept 10	Course Race	Course Race	Course Race
4	Wed, Sept 11	Distance Race		
5	Thu, Sept 12	Course Race	Course Race	spare
6	Fri, Sept 13	Course Race	Course Race	spare

- 5.4 The scheduled time of the warning signal for the practice race is 1400.
- 5.5 The scheduled time of the first warning signal for subsequent days of racing is 1100. This changes NoR 8.7. The scheduled time of the first warning signal for Friday, September 13, 2024 is 0930.
- 5.6 On the last day of racing, no warning signal will be made after 1500.
- 5.7 The date of the distance race will be posted by 2000 on the day before the race is scheduled.

7 THE COURSES

7.3 RRS Appendix S Course Diagrams for courses L and LA 'Finish' are modified as per the diagram. The finishing mark is to be left to port.



7.4 The course will not be shortened to less than 3 legs. The offset leg (1 to 1a) is not considered to be a leg of the course.

7.5 Addendum A shows the overall course for the distance race, the name and location of each mark, and the sides on which each mark is to be left. The course is approximately 18 nm in length.

7.6 The distance race will not be shortened.

7.7 For the distance race, Mark 1 will be set 1.5 nm to windward of the signal vessel. If the bearing from the Mooring Ball to Mark 1 is greater than 232° M and less than 52° M, Mark 1 will be left to port.

8 MARKS

8.2 The starting mark will either be a race committee vessel displaying an orange flag on a staff or an orange inflatable.

8.3 Marks 1, 2p and 2s will be yellow inflatables.

8.4 Mark 1a will be a red ball.

8.5 The finishing mark will be a spar displaying a blue flag.

8.6 The new mark, as RRS Appendix S 10.1 will be an orange inflatable.

8.7 For the distance race, the marks are described in Addendum A.

10 CHANGE OF THE NEXT LEG OF THE COURSE

10.2 In the event of the next leg change of the course, Mark 1a will not be relocated. Boats shall round the new Mark 1, leaving it to port.

10.3 The leeward gate may be replaced by a single mark; in this case the mark shall be left to port.

12 TIME LIMITS

12.2 a)

Course Races				
Starting Window	Mark 1 Time Limit	Race Time Limit	Finishing Window	Target Time
4 minutes	45 minutes	2 hours	30 minutes	60 minutes



2024 Shark 24 World Championship Supplemental Sailing Instructions



b)

<u>Distance Race</u>			
Starting Window	Mark 1 Time Limit	Race Time Limit	Finishing Window
4 minutes	45 minutes	4 hours	30 minutes

12.3 Boats failing to start within the Starting window will be scored DNS. This changes RRS A5.1 and A5.2.

12.4 Failure to meet the target time will not be grounds for redress. This changes RRS 62.1(a).

13 PROTESTS AND REQUESTS FOR REDRESS

13.1 Delete RRS Appendix S 13.1 and replace with 'Hearing request forms are available online on the official notice board located at <https://yachtscoring.com> and shall be delivered there electronically within the appropriate time limit.'

13.2 Delete RRS Appendix S 13.2 and replace with 'The protest time limit is 60 minutes after the docking time of the signal vessel. The time will be posted on the official notice board.'

13.3 Delete RRS Appendix S 13.3 and replace with 'Notices will be posted no later than 10 minutes after the protest time limit to inform competitors of hearings in which they are parties or named as witnesses and where the hearings will be held.'

14 COMMUNICATIONS

14.1 On the water, the race committee intends to monitor and communicate with competitors on VHF radio channel 71.

14.2 If the race committee displays flag T, the alternative VHF radio channel 69 will be used.

14.3 If any boat is identified as OCS, UFD, or BFD at the starting signal, the race committee will attempt to hail her bow number or sail number. Failure to hail her bow number or sail number, failure of her to hear such a hail, or the order in which boats are hailed will not be grounds for a request for redress. This changes RRS 62.1(a).

15 SAFETY REGULATIONS

15.1 [DP][NP] A boat that retires from a race shall notify the race committee at the first reasonable opportunity.



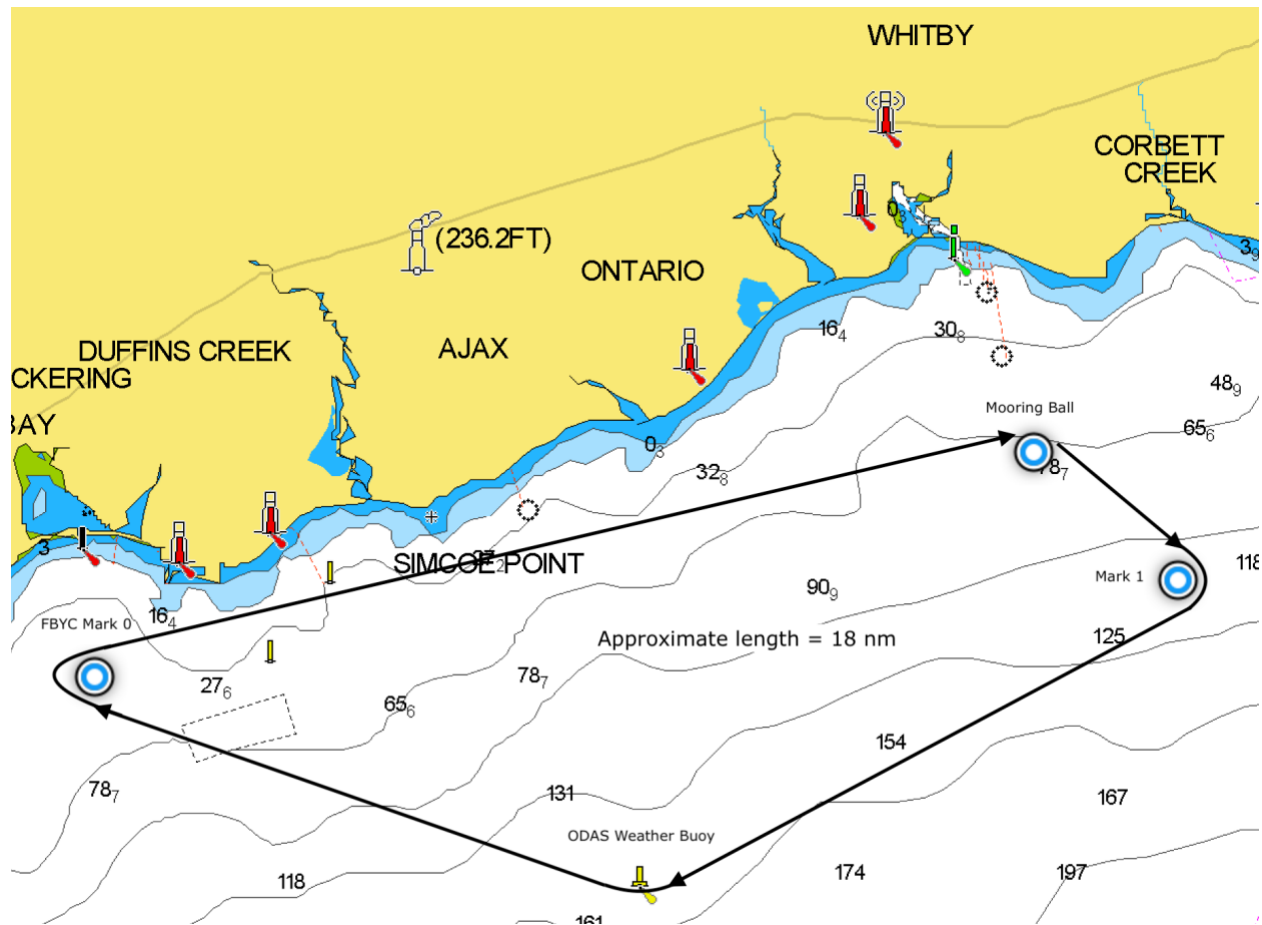
2024 Shark 24 World Championship Supplemental Sailing Instructions



16 OFFICIAL VESSELS

- 16.1 Jury vessels will be identified by displaying the jury flag (letter J on a white background).

Addendum A: Distance Race Course



Marks		
#	Description	Latitude and Longitude
Mooring Ball	Red ball	43° 49.423' N, 078° 54.816' W
Mark 1	Yellow inflatable	TBD
2	ODAS Weather Buoy [Y FL (5) Y 20S]	43° 46.000' N, 78° 59.099' W
3	"FBYC-0" Frenchman's Bay Yacht Club Mark #0	43° 47.401' N, 79° 05.013' W