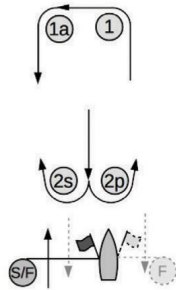


BUOY RACE COURSE DIAGRAMS

HELLY HANSEN SAILING WORLD REGATTA SERIES
ANNAPOLIS YACHT CLUB | ANNAPOLIS, MD MAY 3-5, 2024

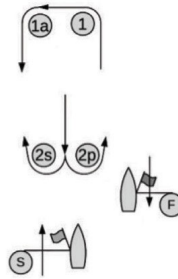
All marks except 2S are to be rounded to port. If there is only one mark at a leeward gate, that mark will be "2p" and shall be rounded to port. If mark 1a is not in place, boats shall round mark 1 to port. The color and shape of the marks will be as described in SI Addendum 1.

LA



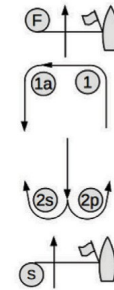
LA2: Start-1-1a-s/2p-
1-1a-Finish
LA3: Start-1-1a-s/2p-
1-1a-2s/2p-
1-1a-Finish

LAF



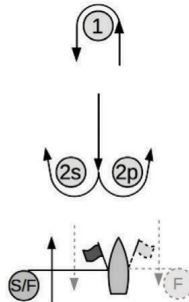
LA2F: Start-1-1a-2s/2p-
1-1 a-Finish
LA3F: Start-1-1a-2s/2p-
1-1a-2s/2p-
1-1 a-Finish

WA



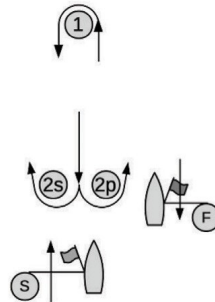
WA2: Start-1-1a-2s/2p-
Finish
WA3: Start-1-1a-2s/2p-
1-1a-2s/2p-
Finish

L



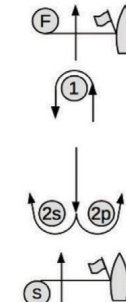
L2: Start-1-2s/2p-
1-Finish
L3: Start-1-2s/2p-
1-2s/2p-1-Finish

LF



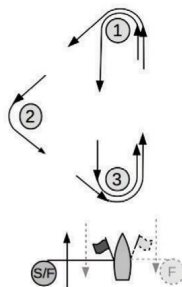
L2F: Start-1-2s/2p-
1-Finish
L3F: Start-1-2s/2p-
1-2s/2p-1-Finish

W



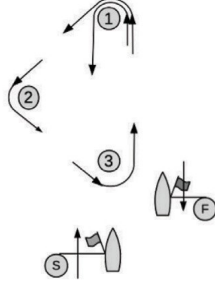
W2: Start-1-2s/2p-
Finish
W3: Start-1-2s/2p-
1-2s/2p-Finish

TL



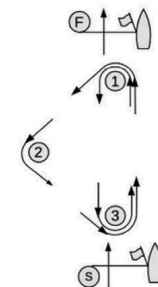
TL2: Start-1-2-
3-1-Finish
TL3: Start-1-2-
3-1-3-1-Finish

TLF



TL2F: Start-1-2-
3-1-Finish
TL3F: Start-1-2-3-
1-3-1-Finish

TW



TW2: Start-1-2-3-
Finish
TW3: Start-1-2-3-
1-3-Finish