

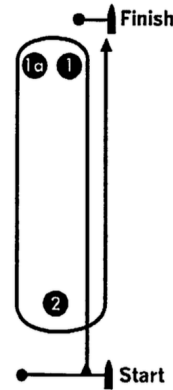
COURSE DIAGRAMS

HELLY HANSEN SAILING WORLD REGATTA SERIES

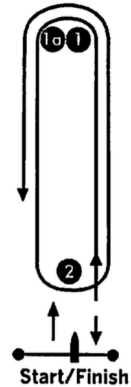
ST. PETERSBURG YACHT CLUB, ST. PETERSBURG FL | FEBRUARY 16-18 2024

COURSE 3

"3" (three legs): Windward, leeward, finish to windward. Mark 2 may be passed on either side on the first upwind leg and mark 1 may be passed on either side on the finishing leg.



COURSE 3



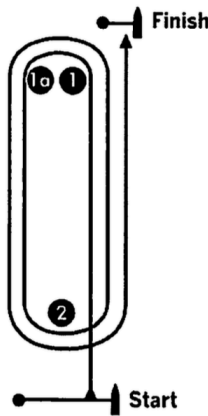
COURSE 4

COURSE 4

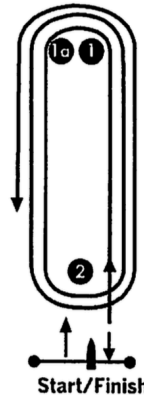
A" (four legs): Windward, leeward, windward, finish to leeward. Mark 2 may be passed on either side on the first windward leg and the finishing leg.

COURSE 5

"5" (five legs): Windward, leeward, windward, leeward, finish to windward. Mark 2 may be passed on either side on the first windward leg and mark 1 may be passed on either side of the finishing leg.



COURSE 5



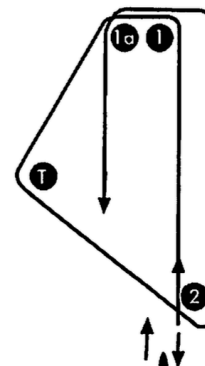
COURSE 6

COURSE 6

"6" (six legs): Windward, leeward, windward, leeward, windward, finish to leeward. Mark 2 may be passed on either side on the first windward leg and the finishing leg.

COURSE T

"T" (Triangle): Windward, reach to Mark "T", reach to Mark 2/gate, windward, leeward to the finish. Mark 2 may be passed on either side on the first windward leg And the finishing leg.



COURSE T