

**HELLY HANSEN**



**SAILING WORLD**

**2024 REGATTA SERIES**

FEBRUARY 16 - 18, 2024  
ST. PETERSBURG YACHT CLUB  
ST. PETERSBURG, FL

Posted February 13, 2024

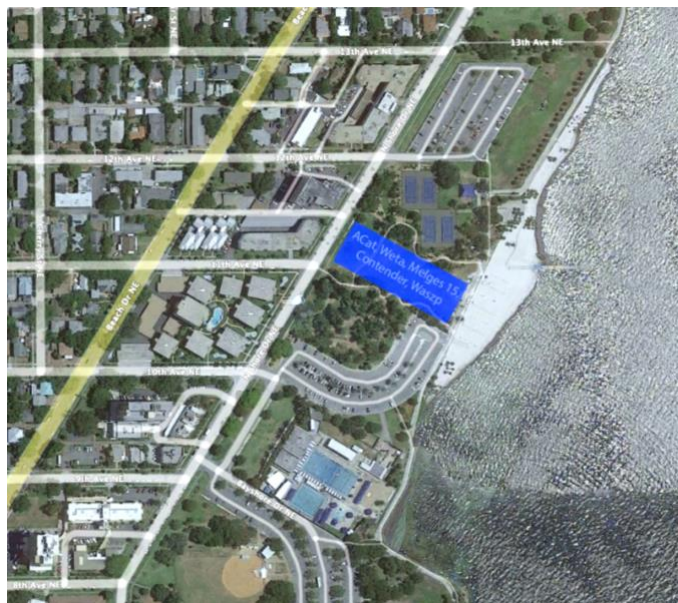
**Launching/Hauling** - The majority of launching will take place on Thursday, February 15<sup>th</sup> and nearly all the boats haul out after racing on Sunday, February 18<sup>th</sup>. Anyone who is able to launch earlier in the week, or haul on Monday is strongly encouraged to do so to avoid long lines.

The Sailing Center has 2-ton and 3-ton cranes. Traffic between Bayshore Drive and the Sailing Center will be strictly controlled.

ALL Vessels and trailers must be removed from the St. Petersburg Sailing Center no later than 6pm on Monday, February 19.

***Please note: There is no vehicle parking at the Sailing Center for the duration of the event.***

**A-Cat, Contender, Flying Dutchman, Melges 15, Windmills, Weta Fleets** – The A-Cat, Contender, Flying Dutchman, Melges 15, Windmills & Weta fleets will be stored and launched at Elva Rouse Park (901 North Shore Drive NE, St. Petersburg, FL 33701) for the duration of the regatta. These fleets may arrive to Elva Rouse Park on Wednesday, February 14<sup>th</sup>, and must vacate the park on Sunday, February 18<sup>th</sup>. Please note, vehicles are not allowed on parkland grass and overnight RV parking and/or camping is not permitted.



**Lightning Fleet** – The Lightning Fleet will launch at the Sailing Center prior to the start of the day’s racing and will haul at the conclusion of racing each day. These fleets may arrive to the Sailing Center on Thursday, February 15<sup>th</sup>, and must vacate the Center on Sunday, February 18<sup>th</sup>.

**Trailer Storage**- Free trailer parking is available at Derby Lane. Trailers must be registered and tagged before going to [Derby Lane](#) (10490 Gandy Blvd N, St. Petersburg, FL 33702), and all trailers must be removed no later than February 20<sup>th</sup>. [Register Trailers Here](#) and receive your trailer tag by visiting the [Sailing Center](#) (250 2<sup>nd</sup> Ave SE, St. Petersburg, FL 33701).

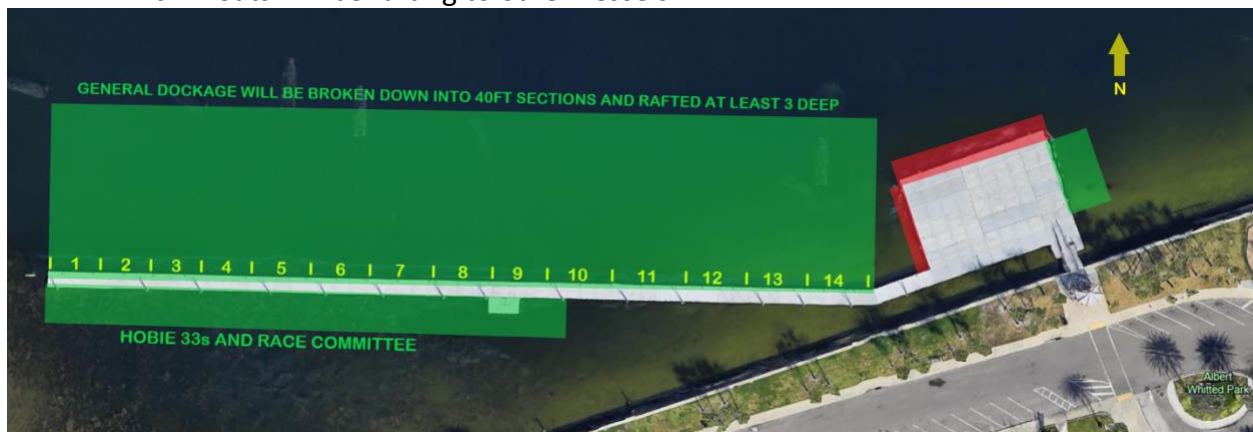


**Remaining Event Dockage:** Competitor dockage will be distributed between the St. Petersburg Sailing Center and a temporary dock to the South of the Sailing Center. Please refer to the dockage maps for the division of fleets.

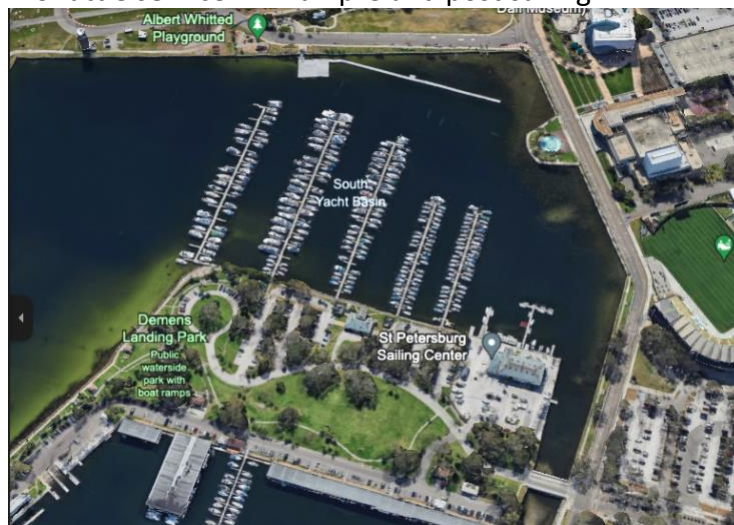
- **SPYC Dockmasters/Sailing Center Staff will be monitoring channel 69 to assist sailors when docking.**
- **Thursday, February 15 7am till 1pm- sailors will only be able to access the area on foot (south of the Grand prix Media event). See the area noted in pink below.**



- **Docks South of the Sailing Center- Spinnaker Boats, Non-Spin, Racer Cruiser, Cruising, ORC, Hobbie 33, S2 7.9**
  - Vehicle access to the area is very limited please plan accordingly.
    - Parking areas listed below
    - Loading and unloading cannot block the flow of traffic
  - Boats are permitted to utilize the area beginning on Wednesday, February 14<sup>th</sup>.
  - All boats must depart the docks by 6pm on February 18<sup>th</sup>.
  - Restroom access will be blocked, please plan accordingly and utilize the Main Clubhouse or Sailing Center, prior to arrival.
  - Water will only be accessible at the sailing Center
  - There is no power or water at this location
  - Boats will be rafting to other vessels



- We will be offering a golfcart shuttle service from the Southern entrance of the Club to the Park. Shuttle service will run pre and post sailing.



- **Docks will be locked from 6pm till 6am- guests will be considered trespassing if they are on the docks past the noted hours.**

- If you need access to your boats outside of the normal hours, please contact our SPYC staff.
- Gear should not be left on the boats/docks.
- **Sailing Center- J70s, J24, Melges 24, Sonars and Martins**
  - Boats will be rafting to other boats
  - Competitors will not have access to their boats post building closing, please plan accordingly.
  - Boats needing access for repairs will require RC approval
- **Competitors will not be permitted to stay on their vessels at either dockage location**
  - Please plan accordingly
    - Those looking for electric and to stay on their vessels should contact the City's Municipal Marina

**Overnight Security-** There will be event security at Elva Rouse Park as well as the temporary dockage location south of the Sailing Center. Note, contents left are entirely at owner's risk.

#### **Vehicle Parking-**

- There is no regatta vehicle parking available at the St. Petersburg Yacht Club or Sailing Center. A map with our recommended parking locations can be found by [Clicking Here](#).
- Friday & Sunday – Daily parking is available at:
  - [Al Lang Stadium](#) 72 1<sup>st</sup> Ave SE, St. Petersburg, FL 33701 **(NOT AVAILABLE SATURDAY)**
  - [South Core Parking Garage](#) 101 1<sup>st</sup> Ave S, St. Petersburg, FL 33701
  - [McNulty Garage](#) 175 2<sup>nd</sup> St S, St. Petersburg, FL 33701
  - [Sundial Garage](#) 117 2<sup>nd</sup> St N, St. Petersburg, FL 33701
- Saturday
  - [South Core Parking Garage](#) 101 1<sup>st</sup> Ave S, St. Petersburg, FL 33701
  - [McNulty Garage](#) 175 2<sup>nd</sup> St S, St. Petersburg, FL 33701
  - [Sundial Garage](#) 117 2<sup>nd</sup> St N, St. Petersburg, FL 33701
- Parking at Albert Whitted Park- this is all metered parking with 2-hour duration. Please plan accordingly.

#### **Event Communications-**

- Stay informed throughout the weekend:  
<https://chat.whatsapp.com/EpAKT1nUQcA0wYomF5OmBm>

**Grab and Go Breakfast:**

