



## **EDGARTOWN RACE WEEKEND** ***'ROUND-THE-SOUND RACES***

*June 20-21, 2024*  
*The Edgartown Yacht Club*  
*Edgartown, Massachusetts*

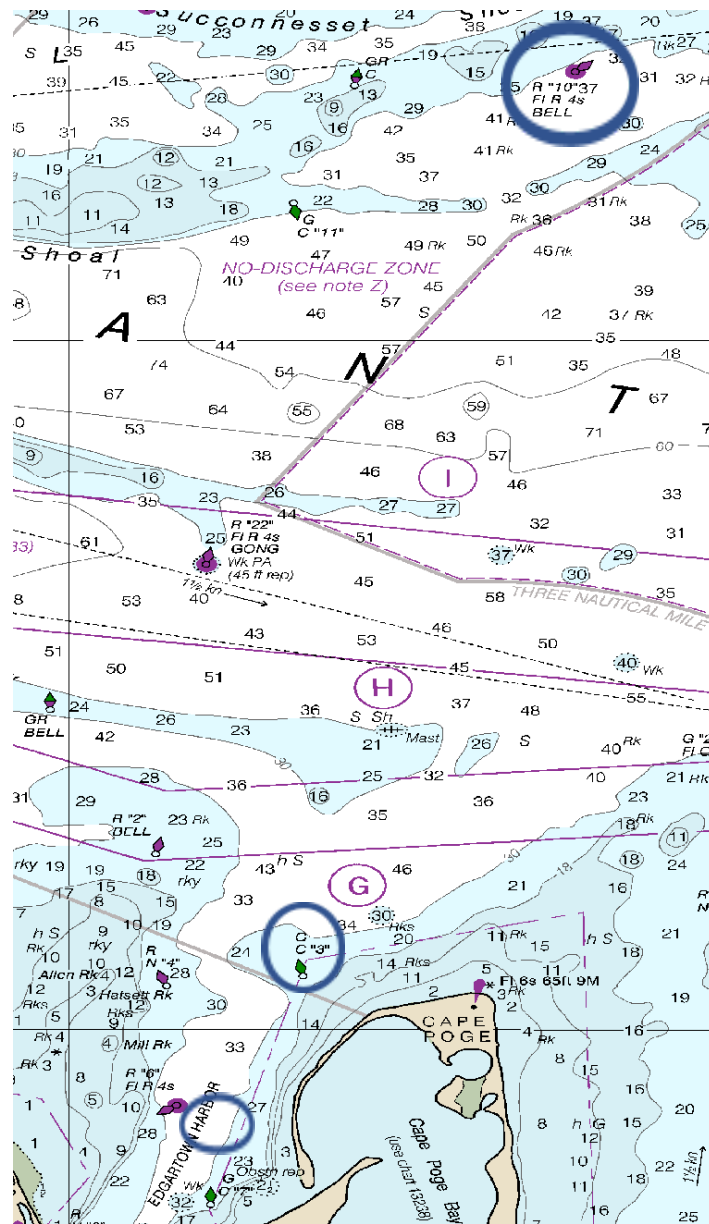
### **SAILING INSTRUCTIONS** **Addendum 1** **Courses**

#### **1 COURSES**

Courses for each class will be posted each day on the Official Notice Board no later than 0900 and will be announced by the Signal Boat on Channel 72 prior to the first warning signal. Additional announcements may be made at the request of any yacht prior to the first warning signal.

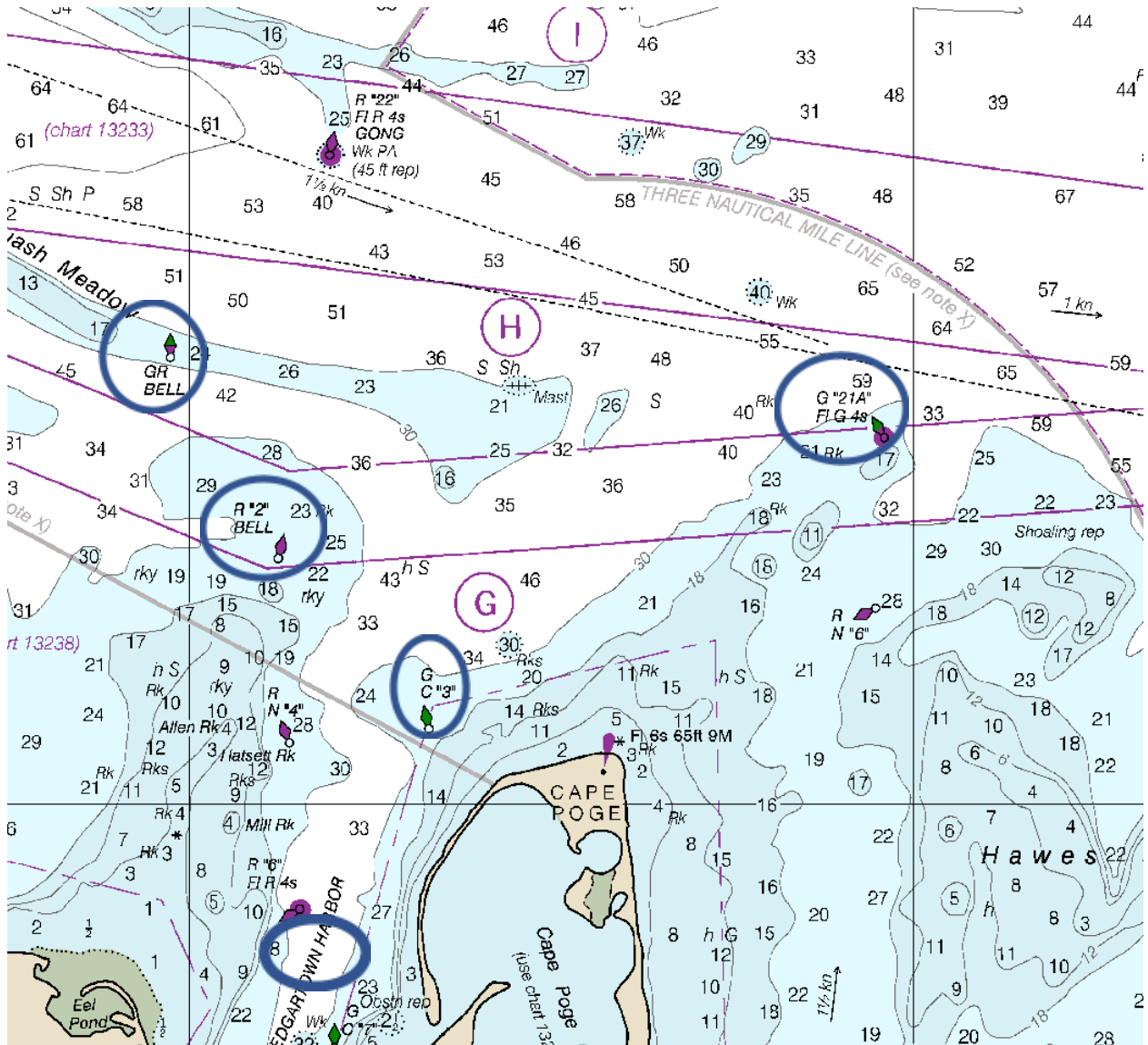
**Note: Only those government marks identified as marks of the course are required to be observed.**

## ROUND-THE-SOUND COURSE 1 (approx. 16 NM)



START AT SIGNAL BOAT SE OF EDGARTOWN HARBOR R "6"  
 LEAVE EDGARTOWN HARBOR G "3" TO STARBOARD  
 LEAVE L'HOMMEDIU SHOAL R "10" TO PORT  
 LEAVE EDGARTOWN HARBOR G "3" TO PORT  
 FINISH AT SIGNAL BOAT SE OF EDGARTOWN HARBOR R "6"

## ROUND-THE-SOUND COURSE #2 PORT (approx. 11 NM)



START AT SIGNAL BOAT SE OF EDGARTOWN HARBOR R "6"

LEAVE EDGARTOWN HARBOR G "3" TO STARBOARD

LEAVE NANTUCKET SOUND MAIN SHIP CHANNEL G "21A" TO PORT

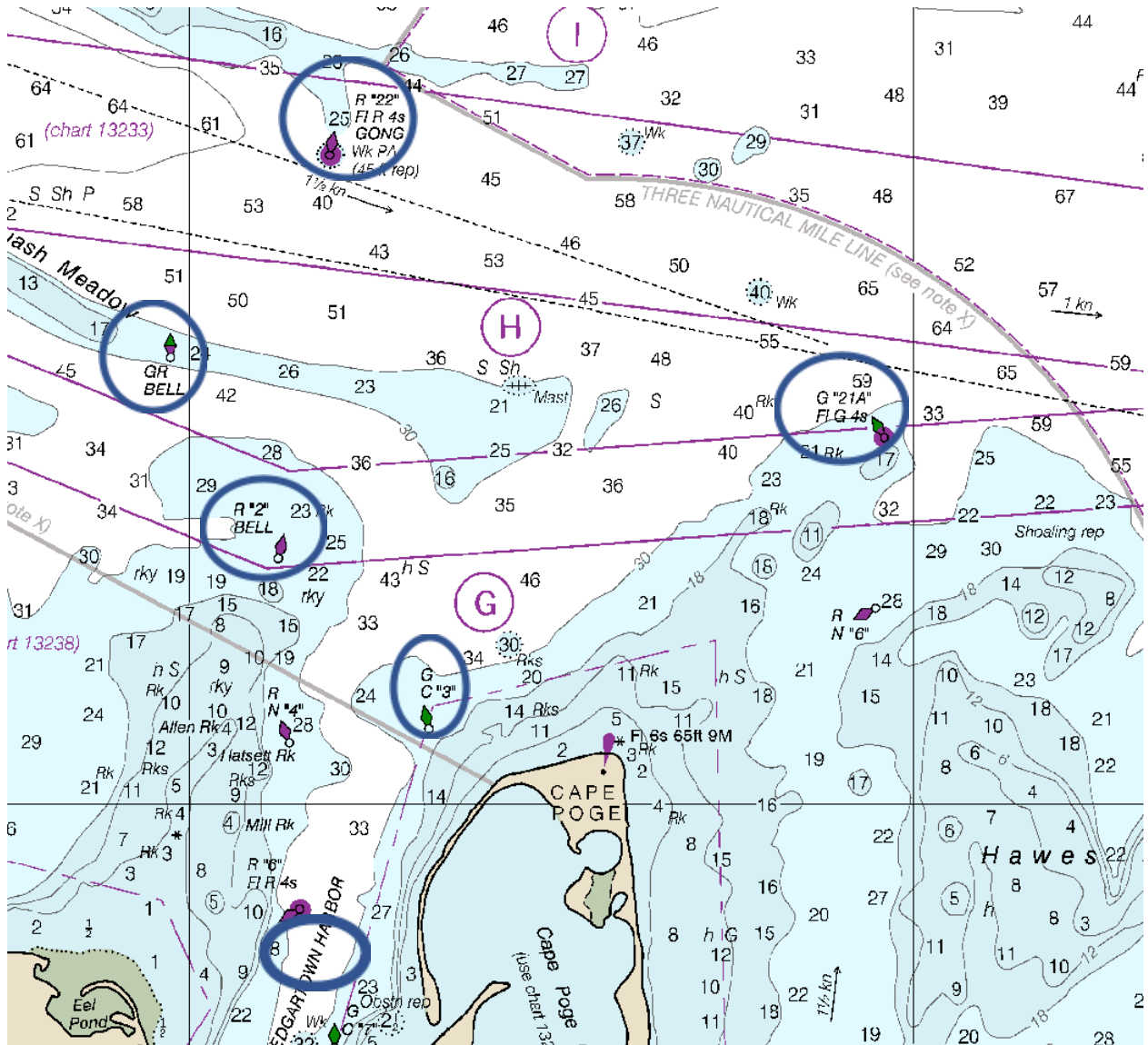
LEAVE SQUASH MEADOW "GR" TO PORT

LEAVE EDGARTOWN HARBOR R "2" TO STARBOARD

FINISH AT SIGNAL BOAT SE OF EDGARTOWN HARBOR R "6"



## ROUND-THE-SOUND COURSE #3 PORT (approx. 12 NM)



START AT SIGNAL BOAT SE OF EDGARTOWN HARBOR R "6"

LEAVE EDGARTOWN HARBOR G "3" TO STARBOARD

LEAVE NANTUCKET SOUND MAIN SHIP CHANNEL G "21A" TO PORT

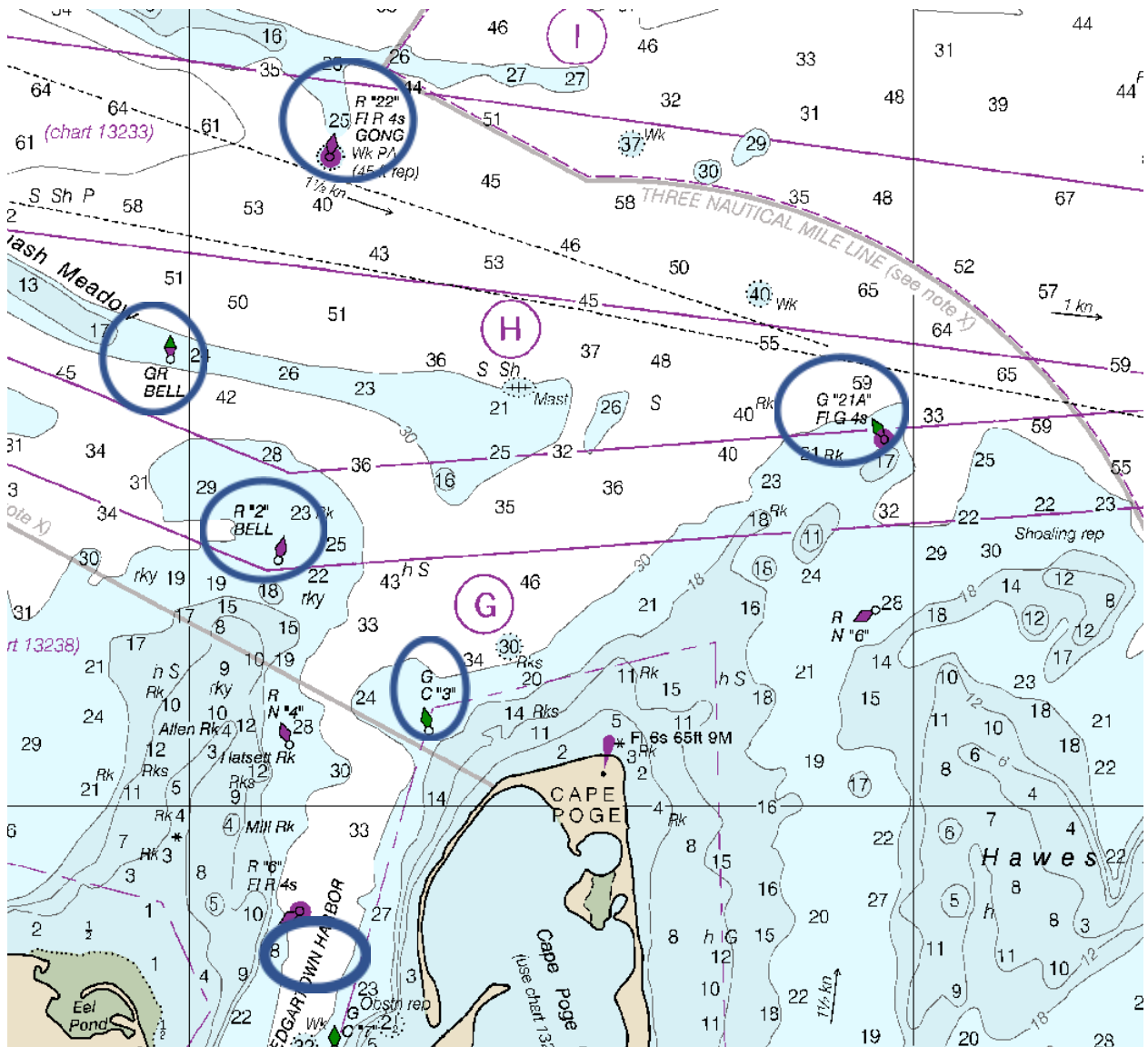
LEAVE NANTUCKET SOUND MAIN SHIP CHANNEL R "22" TO PORT

LEAVE SQUASH MEADOW "GR" TO PORT

LEAVE EDGARTOWN HARBOR R "2" TO STARBOARD

FINISH AT SIGNAL BOAT SE OF EDGARTOWN HARBOR R "6"

## ROUND-THE-SOUND COURSE #3 STARBOARD (approx. 12 NM)



START AT SIGNAL BOAT SE OF EDGARTOWN HARBOR R "6"

LEAVE EDGARTOWN HARBOR R "2" TO PORT

LEAVE SQUASH MEADOW "GR" TO STARBOARD

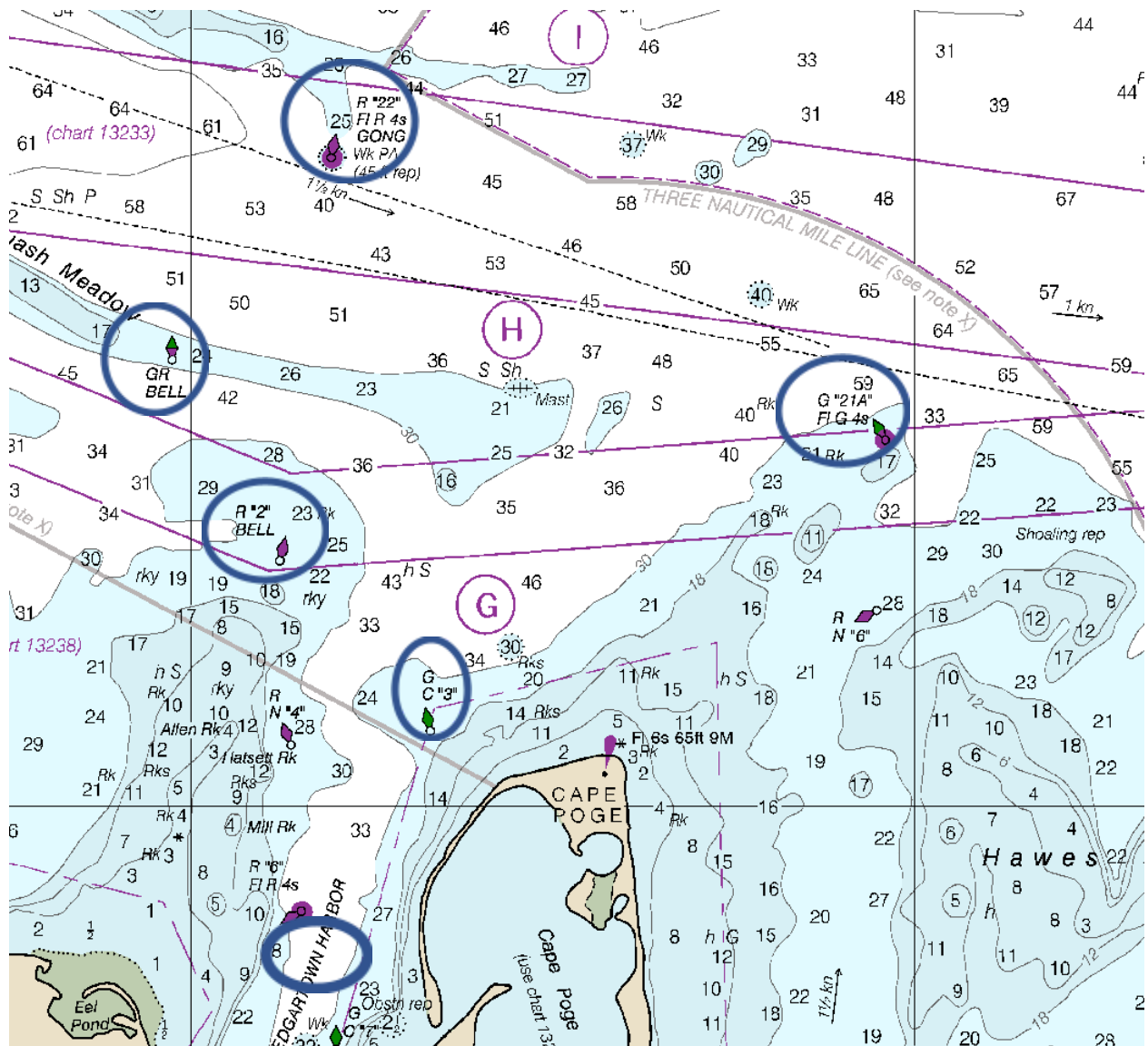
LEAVE NANTUCKET SOUND MAIN SHIP CHANNEL R "22" TO STARBOARD

LEAVE NANTUCKET SOUND MAIN SHIP CHANNEL G "21A" TO STARBOARD

LEAVE EDGARTOWN HARBOR G "3" TO PORT

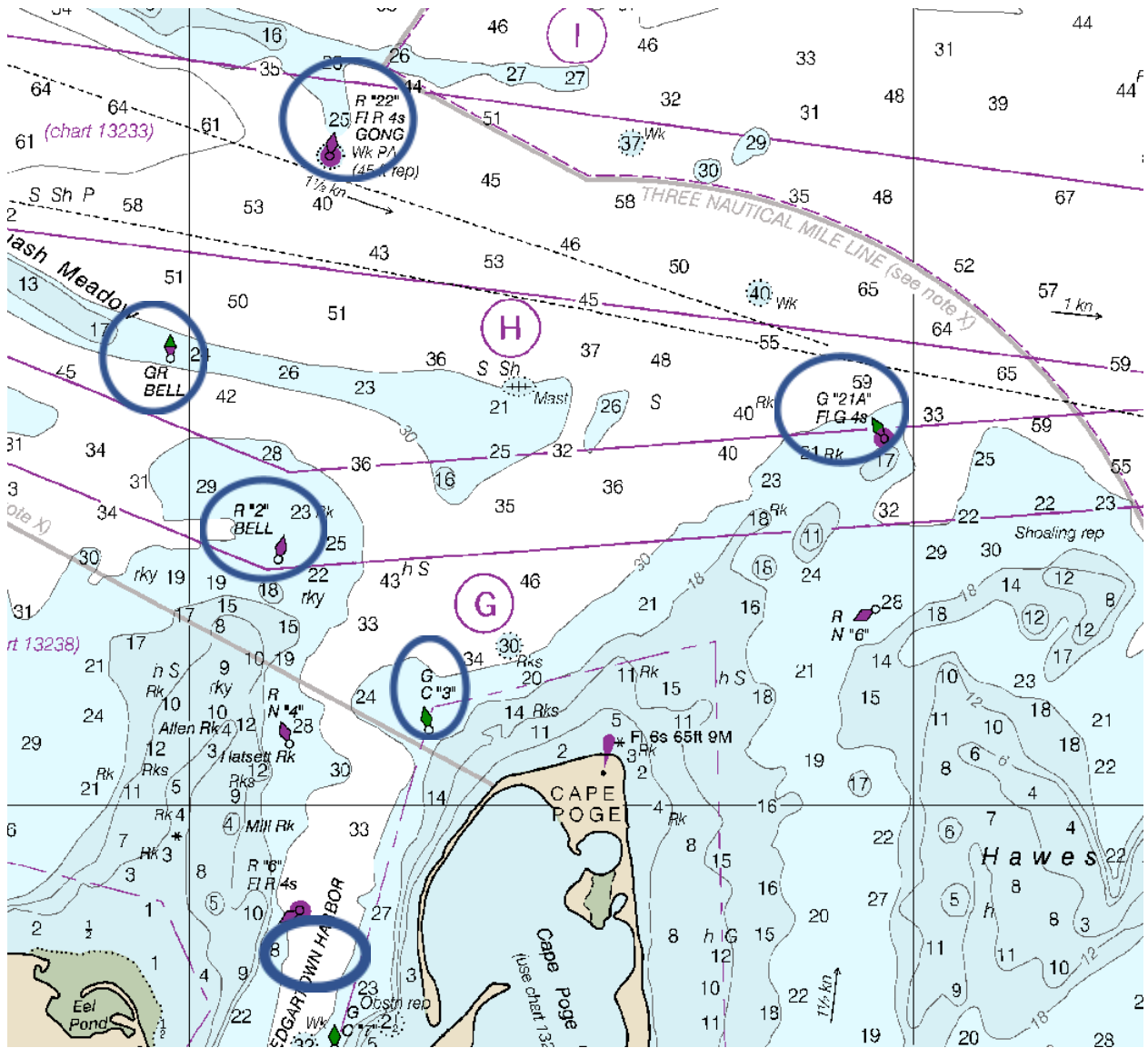
FINISH AT SIGNAL BOAT SE OF EDGARTOWN HARBOR R "6"

## ROUND-THE-SOUND COURSE #4 PORT (approx. 19 NM)



START AT SIGNAL BOAT SE OF EDGARTOWN HARBOR R "6"  
 LEAVE EDGARTOWN HARBOR G "3" TO STARBOARD  
 LEAVE NANTUCKET SOUND MAIN SHIP CHANNEL G "21A" TO PORT  
 LEAVE NANTUCKET SOUND MAIN SHIP CHANNEL R "22" TO PORT  
 LEAVE SQUASH MEADOW "GR" TO PORT  
 LEAVE NANTUCKET SOUND MAIN SHIP CHANNEL G "21A" TO PORT  
 LEAVE SQUASH MEADOW "GR" TO PORT  
 LEAVE EDGARTOWN HARBOR R "2" TO STARBOARD  
 FINISH AT SIGNAL BOAT SE OF EDGARTOWN HARBOR R "6"

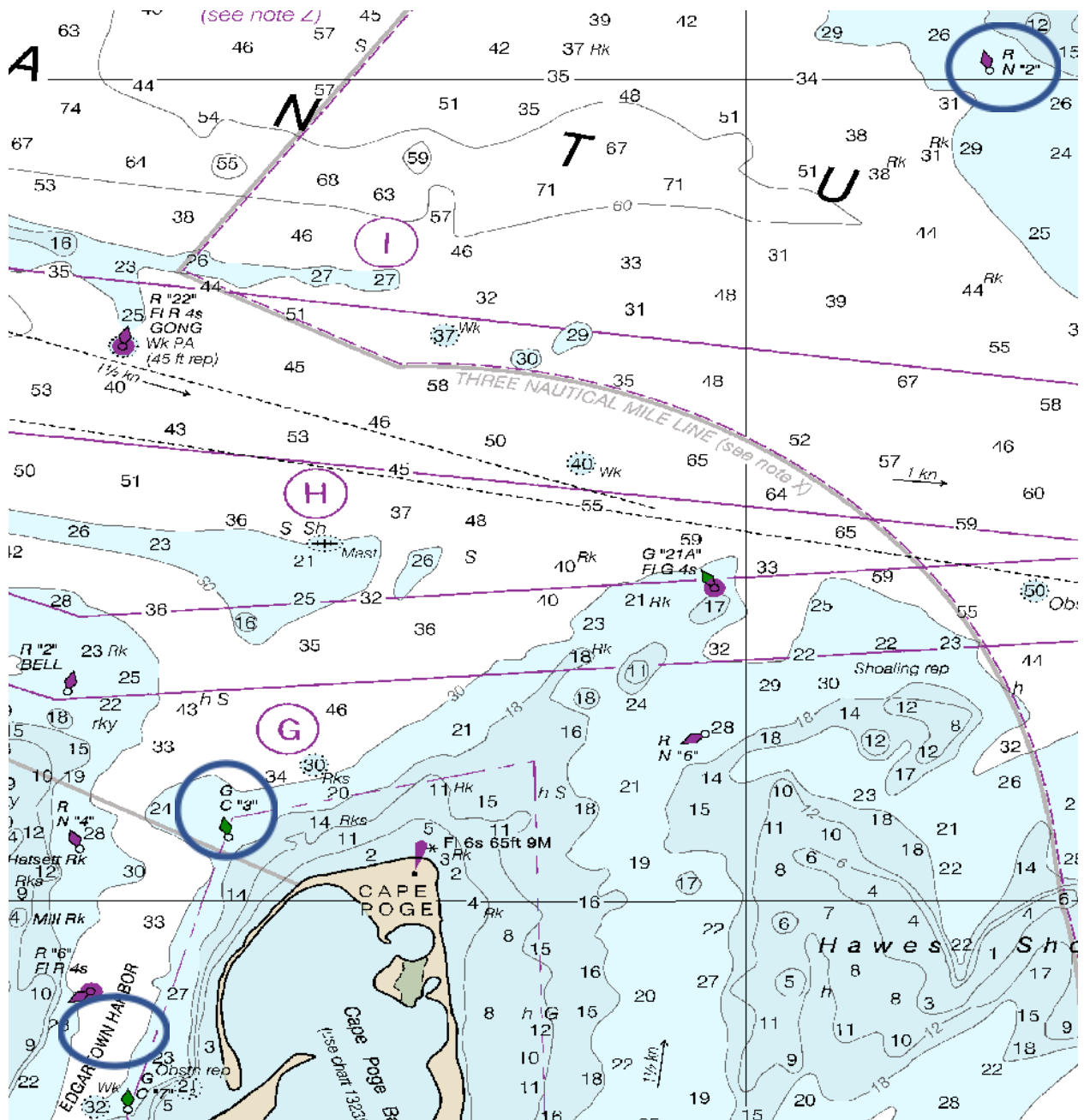
## ROUND-THE-SOUND COURSE #4 STARBOARD (approx. 19 NM)



START AT SIGNAL BOAT SE OF EDGARTOWN HARBOR R "6"  
 LEAVE EDGARTOWN HARBOR R "2" TO PORT  
 LEAVE SQUASH MEADOW "GR" TO STARBOARD  
 LEAVE NANTUCKET SOUND MAIN SHIP CHANNEL R "22" TO STARBOARD  
 LEAVE NANTUCKET SOUND MAIN SHIP CHANNEL G "21A" TO STARBOARD  
 LEAVE SQUASH MEADOW "GR" TO STARBOARD  
 LEAVE NANTUCKET SOUND MAIN SHIP CHANNEL G "21A" TO STARBOARD  
 LEAVE EDGARTOWN HARBOR G "3" TO PORT  
 FINISH AT SIGNAL BOAT SE OF EDGARTOWN HARBOR R "6"



## ROUND-THE-SOUND COURSE #5 (approx. 15 NM)



START AT SIGNAL BOAT SE OF EDGARTOWN HARBOR R "6"  
 LEAVE EDGARTOWN HARBOR G "3" TO STARBOARD  
 LEAVE HORSESHOE SHOAL N "2" TO PORT  
 LEAVE EDGARTOWN HARBOR G "3" TO PORT  
 FINISH AT SIGNAL BOAT SE OF EDGARTOWN HARBOR R "6"