



## **John Jennings Memorial Regatta**

**January 6, 2024**

SPYC Boat of the Year Event

The Organizing Authority is the St. Petersburg Yacht Club,  
St. Petersburg, FL

### **SAILING INSTRUCTIONS**

#### **1 Rules**

- 1.1 This regatta will be governed by the rules as defined in the current Racing Rules of Sailing, and the current WFPHRF Class Rules. This is a WFPHRF Category 4 event.
- 1.2 As allowed by RRS 88.2, the US Sailing prescriptions to RRS 60, 63.2, & 63.4 do not apply to these classes.
- 1.3 This regatta is an Official St. Petersburg Yacht Club boat of the Year event.

#### **2 NOTICES TO COMPETITORS**

**The Official Notice Board will be the Electronic Notice Board located on the Yacht Scoring Website.**

#### **3 CHANGES TO SAILING INSTRUCTIONS**

Any change to the sailing instructions will be posted on the Official Electronic Notice board on the Yacht Scoring Website by 0800 on the day it will take effect, except that any change to the schedule of races will be posted by 2000 on the day before it will take effect.

#### **4 SIGNALS MADE ASHORE**

Signals made ashore will be displayed on the St. Petersburg Yacht Club Flagpole.

#### **5 SCHEDULES OF RACES**

- 5.1 Saturday, January 6, 2024, one race is scheduled for the Racer/Cruisers and Cruisers classes. Three races or more are scheduled for Spinnaker/One Design class.
- 5.2 The Warning signal for the first start on Saturday January 6, 2024 for the Racer/Cruiser and Cruiser classes will be 1100.
- 5.3 The Warning signal for the first start on Saturday January 6, 2024 for the Spinnaker/One Design class will be 1115.
- 5.4 One Race shall constitute a regatta.
- 5.5 If any class does not have 5 or more entries, starts may be combined.

#### **6.CLASS FLAGS**

**The class flags will be colored squares. See 10.5 below.**

#### **7. RACING AREAS**

The racing area will be east of the St. Petersburg Yacht Club Harbor Entrance.

#### **8. COURSES**

- 8.1 The courses for the Spinnaker/One Design class will be as described in Appendix A.
- 8.2 The courses for the Racer/Cruiser, and Cruiser classes will be as described in Appendix B & C.
- 8.3 No later than the warning signal, the RC Signal boat will display the course and approximate compass bearing to the first mark.



## 9 MARKS

9.1 Marks 1 and 3 as shown in Appendix A will be large yellow tetrahedrons.

9.2 New marks as provided in instruction 11 (Change of Course) will be a large orange sphere.

9.3 The starting marks for all courses will be orange spheres. The finish mark for the Spinnaker/One Design class will be orange spheres. The finish mark for Racer-Cruiser and Cruiser classes will be as described in Appendix B.

## 10 THE START

10.1 Starting signals will be in accordance with RRS 26.

10.2 The starting line shall be between a staff displaying an orange flag on the Race Committee Signal boat and an orange sphere.

10.3 Boats shall check in before the warning signal for their class by passing the stern of the Race Committee signal boat for their class on a starboard tack. All boats shall give their boat name, sail number, class and division. Only the Race Committee may protest boats for not checking in properly. This changes RRS 60.1 & 60.3.

10.4 Boats whose starting signal has not been made shall stay clear of the starting area.

10.5 The starting order shall be:

<u>START</u>	<u>CLASS</u>	<u>FLAG</u>
First Start	Racer/Cruiser & Cruisers	Yellow
Second Start	Spinnaker	Grey
Third Start	One Design	White

## 11. CHANGE OF THE NEXT LEG OF THE COURSE (for Spinnaker/One Design only)

To change the next leg of the course, the Race Committee will lay a new mark (or move the finishing line) and remove the original mark as soon as practicable. When in a subsequent change a new mark is replaced, it will be replaced by an original mark.

## 12 RECALLS

12.1 The Race Committee may, after the starting signal, hail the sail numbers of the OCS boats that have not complied with RRS 29.1 & 30.1 on VHF Channel 63. The delay of such a hail, the order of hail or failure of a competitor to hear such a hail shall not be grounds for granting redress. This changes RRS 62.1(a).

12.2 If the Race Committee signals a general recall, the division that has been recalled shall start AFTER all other divisions have started. If more than one division has a general recall, then each recalled division shall restart in their respective starting position AFTER all other divisions have started. This changes RRS 29.2

## 13 THE FINISH

13.1 The finishing line shall be between a staff displaying a blue flag on a Race Committee boat and a mark. For Spinnaker/One Design see Diagram A. For all other classes see Appendix B.

13.2 Racer/Cruisers and Cruisers will take their own time in accordance with RRS 34 and contact the Race Committee within one hour of finishing.

## 14 ALTERNATIVE PENALTIES

Only the scoring penalty, RRS 44.3, (a), (b), and (c) will apply. Vessels will need to fill out the Alternative Acknowledgement Form provided on the Unofficial Bulletin Board at the St. Petersburg Yacht Club docks, and on Yacht Scoring listed under "General Race Forms.

## 15 TIME LIMITS

15.1 Spinnaker/One Design boats failing to finish within 60 minutes after the first boat in its class that sails the course and finishes will be scored DNF without a hearing.



15.2 Racer/Cruiser & Cruiser time limit to finish the race is 1600. Any vessel not finished by the time limit will be scored DNF without a hearing. This changes RRS 35, 63.1, A4.1 and A5.

## 16 PROTESTS AND REQUESTS FOR REDRESS

16.1 Protest forms are available on Yacht Scoring under “General Race Forms” and on the unofficial notice board.

16.2 A boat intending to protest about an incident that occurs in the racing area shall notify the Race Committee finish boat for her class of her intention at the finish line, including the sail number of the boat being protested. This changes RRS 61.

16.3 Protests shall be filled out online on Yacht Scoring within 120 minutes of their boat’s finish time.

16.4 All Parties involved with a protest will be notified electronically as soon as possible of the location, time, and if it will be by zoom or in person. This hearing may be at a later date.

## 17 SCORING

17.1 Corrected times for individual races will be calculated for the PHRF boats using the following WFPHRF ratings: The Random Leg Course Rating (RLC) will be used for the Racer/Cruiser and Cruiser classes. The WFPHRF rating will be used for the Spinnaker Class.

17.2 The Low Point System of Appendix A of the racing rules will apply, except that no score will be excluded.

## 18 COMMUNICATIONS

18.1 The Race Committee will monitor VHF channel 63 for **courtesy** communications from/to regatta participants.

Nothing said over VHF Channel 63 for **courtesy** reasons shall be grounds for protests or redress

18.2 A boat shall neither make radio transmissions while racing nor receive radio communications not available to all boats. This restriction also applies to cell phones. The only exception is SI 19.

18.3 The Race Committee will monitor VHF channel 63 and 16 after the start.

## 19 SAFETY RULE

A boat that retires from a race shall notify the Race Committee signal boat for her class, as soon as possible on Channel 63 and/or 16. The Race Committee may protest a competitor who fails to notify the committee when retiring.

## 20 DISCLAIMERS OF LIABILITY/PERSONAL CONDUCT

20.1 Competitors participate in this regatta at their own risk. See RRS 3, Decision to Race. The Organizing Authority, the Sponsors, the Race Committee, Officers and Board of Directors of SPYC, and all those involved in these organizations will not accept any responsibility for material damage or personal injury or death sustained in conjunction with or prior to, during or after this regatta.

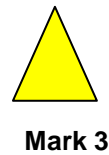
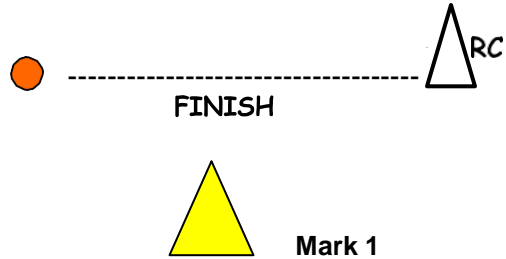
20.2 The Skipper/Owner of each boat participating in the Regatta shall be responsible for the behavior of each member of crew on his/her boat, both on the water and while ashore. The failure of any of those persons to comply with all policies and restrictions of the St. Petersburg Yacht Club or with any reasonable request of the Organizing Authority or Race Officers, may result in disqualification of the boat and its exclusion from the Regatta. This modifies RRS 76.

**Further Information on the Social and Awards Ceremony will be communicated through Yacht Scoring.**



## Appendix A – Spinnaker/One Design Course

Courses for Spinnaker and One Design (not to scale)



### SPINNAKER/ONE DESIGN Courses

- COURSE A: Start - 1 - 3 - 1 - Finish at "START"
- COURSE B: Start - 1 - 3 - 1 - 3 - 1 - Finish at "START"
- COURSE C: Start - 1 - 3 - 1 - 3 - Finish at "FINISH"

**All Marks shall be left to port**



## APPENDIX B – MARKS and COURSES

The Starting Line will be in the vicinity of Marks “D/E”.

The Finish line will at the Bayboro Harbor Entrance mark described as: FL (2+1) G6S 16ft 5M “S”. All mark positions and distances are approximate. See latest NOAA and Notice to Mariners for exact locations.

### MARKS

Mark “D”	G “3” FI G 4s	1nm ESE of SPYC harbor entrance	27 46.0 N 82 36.5W
Mark “E”	G “1” QG	1.2nm ENE of SPYC harbor entrance	27 46.8 N 82 36.1W
Mark “F”	Q 10 ft FI 4s 5m	Front Range Cut J Channel	27 45.9 N 82 34.3W
Mark “J”	G “3G” FI G 2.5s	Cut G Channel	27 47.1 N 82 32.5W
Mark “K”	Iso 6s 52ft FI 4s 20ft 3m	Back Range Cut E Channel	27 46.3 N 82 31.0W
Mark “P”	Iso 6s 50ft 2FI 4s 5m	Back Range Cut J Channel	27 45.0 N 82 34.3W
Mark “R”	FI G4s 16ft 5M”9”	Pinellas Channel	27 43.9 N 82 36.6W
Mark “T”	Q 18 ft	Front Range Cut B Channel	27 41.3 N 82 34.7W
Mark “U”	QR 27 ft	Lower Range Cut C Channel	27 40.2 N 82 36.3W

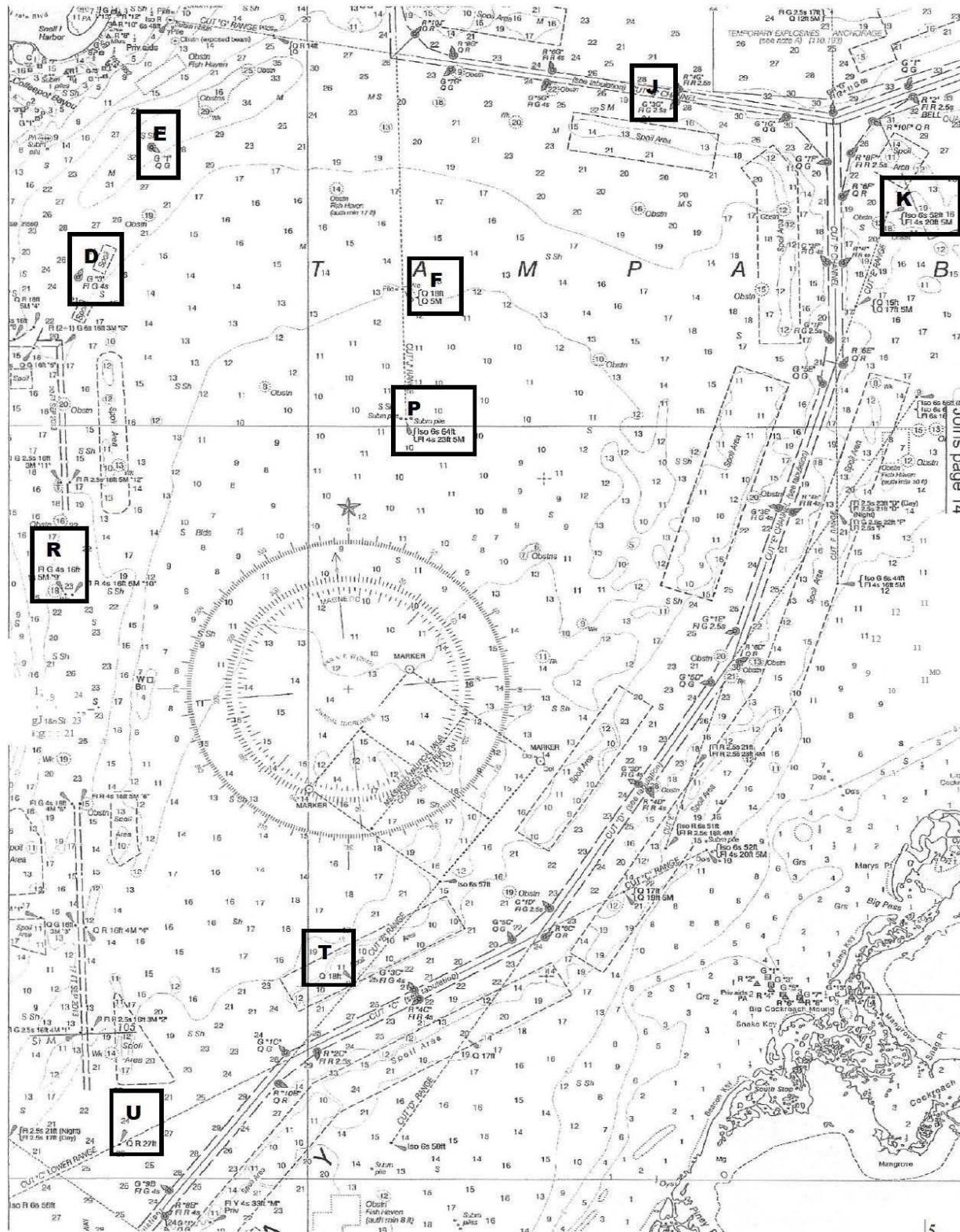
### COURSES

<u>COURSE #</u>	<u>MARKS TO BE ROUNDED</u>	<u>SIDE TO BE ROUNDED ON</u>	<u>APPROX. DISTANCE</u>
#1	START-J-E-P-FINISH	PORT Except: P round to starboard	10.2NM
#2	START-K-E-P-FINISH	PORT Except: P round to starboard	12.4NM
#3	START-F-K-E-P-FINISH	PORT Except: P round to starboard	11.9NM
#4	START-F-K-E-P-K-FINISH	PORT	17.2NM
#5	START-F-K-E-T-P-FINISH	PORT	21.4NM
#6	START-F-J-E-T-FINISH	PORT	15.3NM
#7	START-F-K-T-R-FINISH	STDB	14.5NM
#8	START-F-K-R-FINISH	STDB	10.9NM
#9	START-F-T-R-FINISH	STDB	11.4NM
#10	START-F-T-U-R-FINISH	STDB	14.1NM
#11	START-K-T-U-R-FINISH	STDB	15.9NM
#12	START-F-P-T-U-D-F-FINISH	STDB	18.5NM
#13	START-F-P-T-U-D-F-D-F-FINISH	STDB	21.9NM
#14	START-K-T-U-D-F-FINISH	STDB	22.5NM
#15	START-F-P-T-U-R-P-R-FINISH	STDB	18.8NM
#16	START-K-T-U-R-P-R-FINISH	STDB	23.2NM

See approximate mark locations on Chart below



# Appendix C - Chart for Approximate Location of Marks



5-