



# Lake Ontario 300 Challenge Race Presented by driveHG

**July 12 – July 16, 2024**

**Organizing Authority**

**Lake Ontario Offshore Racing of the Port Credit Yacht Club**

[www.loor.ca](http://www.loor.ca)

**& For LO300 Solo Challenge, with the Great Lakes Singlehanded  
Society**

[www.solosailors.org](http://www.solosailors.org)

**Sailing Instructions**

**Version 1**

**Published on 2024-06-29**

~

*A component of Ontario Sailing's Offshore Keelboat PHRF-LO & ORC  
Championships*

**[Event's YachtScoring Web Site](#)**

# SAILING INSTRUCTIONS

*The notation '[NP]' in a rule means that a boat may not protest another boat for breaking that rule. This changes RRS 60.1(a).*

*[SP] denotes a rule for which a standard penalty will be applied by the race committee without a hearing. The Standard Penalty assigned is listed in the applicable rule. This changes RRS 62.1(a), RRS 63.1, Appendix A4, and Appendix A5.*

## **1 The RULES**

1.1 See Notice of Race (NoR).

1.2 OA Supplied Flags

- While in harbour, from the forestay
- While racing, from the backstay. If the boat has no backstay, from the starboard shroud. This identifies the boat as participating in the LO300.

1.3 OA Supplied Tracking Device

1.3.1 Competitors shall assume responsibility for the tracking device they receive during the Mandatory Check-in by completing the LO300 Tracker Agreement.

1.3.2 Competitors shall use the OA supplied tracking device at all times during the race according to instructions provided with the tracking device.

## **2 CHANGES TO SAILING INSTRUCTIONS**

2.1 Any change to the sailing instructions will be posted before 0900 on the day it will take effect, except that any change to the schedule of races will be posted by 2000 on the day before it will take effect.

## **3 COMMUNICATIONS WITH COMPETITORS.**

3.1 Notices to competitors will be posted on the official notice board located at [https://yachtscoring.com/notice\\_board.cfm?eid=16289](https://yachtscoring.com/notice_board.cfm?eid=16289)

3.2 The race office is located virtually: 1-866-462-8828, [racecommittee@loor.ca](mailto:racecommittee@loor.ca).

3.3 [DP] Radio Communications

3.3.1 Marine VHF Channel 71 Canadian shall be used by the Race Committee for radio communication during the race.

3.3.2 Each sailboat shall monitor VHF Channel 71 from 30 minutes before her warning signal until one hour after her start, and from approximately one hour before finishing or 5 NM from the Finish, which ever occurs later, until 30 minutes after finishing

3.3.3 Sailboats are encouraged to talk to other sailboats in the race on marine

VHF channel 71 throughout the race, especially at 1000 and 2200 EDT.

3.3.4 Sailboats shall monitor marine VHF channel 16 at all other times.

## 4 CODE OF CONDUCT

4.1 [DP] Competitors and support persons shall comply with reasonable requests from race officials.

4.2 [DP] Competitors and support persons shall handle any equipment or place advertising provided by the organizing authority with care, seamanship, in accordance with any instructions for its use and without interfering with its functionality.

## 5 SIGNALS MADE ASHORE

5.1 Signals made ashore will be displayed on the main flagpole of the PCYC.

5.2 When flag AP is displayed ashore, '1 minute' is replaced with 'not less than 60 minutes' in Race Signals AP.

## 6 SCHEDULE OF RACES

6.1 The first warning signal for

Solo Challenge 1025 EDT, Saturday, July 13, 2024

Doubled Handed & Fully Crewed 1105 EDT, Saturday, July 13, 2024

6.2 Classes, division, and fleet splits and starting sequences, including class flags, for RRS 26, shall be made available no later than 1000 EDT Friday, July 12, 2024, [HERE](#) under Documents & Forms. They may be published earlier. The assignment of participants to a division, fleet or class is subject to change.

## 7 CLASS FLAGS

7.1 See 6.2 for class flags for RSS 26.

## 8 RACING AREA

8.1 The race will occur in Lake Ontario.

## 9 THE COURSES

9.1 Main Duck Island Course

	<b>START</b>	
To	driveHG Mark {Fogh Clarkson Mark (LSYC)}	Left to port
To	Niagara Bar Lighted Buoy 2	Left to port
To	Main Duck and Yorkshire Islands	Left to starboard
To	Ford Shoal	Left to starboard
To	<b>Finish</b> PCYC Finish Mark for Onshore	

	Finish & PCYC Shore Station	
--	-----------------------------	--

The approximate distance is 300NM.

Code Flag D will be flown to indicate the Solo fleets on the Main Duck Course are starting at or before the warning for the first such fleet.

Code Flag F will be flown to indicate the Fully Crewed and Double Handed fleets on the Main Duck Course are starting at or before the warning for the first such class.

9.2 Scotch Bonnet Island Course

	<b>START</b>	
To	driveHG Mark {Fogh Clarkson Mark (LSYC)}	Left to port
To	Niagara Bar Lighted Buoy 2	Left to port
To	Scotch Bonnet Island	Left to port
To	<b>Finish</b> PCYC Finish Mark for Onshore Finish & PCYC Shore Station	

The approximate distance is 185 NM.

Code Flag E will be flown to indicate the Fully Crewed and Double Handed fleets on the Scotch Bonnet Course are starting at or before the warning for the first such fleet.

**10 MARKS**

10.1 Marks in Alphabetical Order

MARK REFERENCE	TYPE	DESCRIPTION
driveHG Mark {Fogh Clarkson Mark (LSYC)}	Mark	Located approximately at 43° 30.64' N, 079° 33.65' W
Ford Shoal Buoy	Mark	A flashing green (4s.) mark located east of Oswego located at approximately 43° 26.955' N, 76° 35.34' W (Main Duck Island Course only) (Lighted Buoy 1)
LOOR Start Area	Mark	0.9 NM on a bearing of 080° magnetic from the entrance to the harbour at Port Credit Yacht Club located at approximately 43° 33.95' N 079° 32.32 W
Main Duck and Yorkshire	Mark	Sailboats must round both Main Duck and Yorkshire islands including shoal marker

Islands		buoys: 1. M9, a green buoy with flashing green light (4s.) located at approximately 43° 55.02' N, 76° 40.52' W (Main Duck Island Course only) 2. MM2, a red buoy with a flashing red light (4s.) located at approximately 43°54.55' N, 76°35.68' W,
Niagara Bar Lighted Buoy 2	Mark	A red buoy marked "2", with a flashing red light (4s.), located at approximately 43°19.040'N, 79°04.235'W, 3.4 NM north of the light at Fort Niagara. ( <i>Niagara Bar light buoy 2</i> )
PCYC Finish Mark for Onshore Finish	Mark	A white buoy with orange stripes and low intensity flashing white light, lighted only overnight, approximately 140 mag 0.13 NM from the shore station approximately at 43° 33.659' N 079° 33.315' W. See Diagram 2, The Finish - Onshore. Race Committee may post the actual set location on the Official Notice Board.
PCYC Race Committee Shore Station	Mark	A mast flying orange and blue flags, located on the headland immediately west of the entrance to the harbour at PCYC approximately at 43° 33.758' N 079° 33.457' W. See Diagram 2 The Finish – Onshore
Scotch Bonnet Island	Mark	A flashing white (4s.) light on a white skeleton tower (19.1m) located on a small island SW of Nicholson Island at approximately 43°53.97'N, 77°32.55'W (Scotch Bonnet Island Course only)

10.2 Marks as listed, above, should be at the identified latitude and longitude location. If a mark is not at the identified latitude and longitude location, or otherwise cannot be seen due to poor visibility, then the sailboat shall round the identified latitude and longitude location as indicated in the Sailing Instructions and continue with the race.

10.3 A record shall be entered in the sailboat's log detailing the timeline and efforts made to find the mark and the time that the mark's identified latitude and longitude was deemed to have been rounded. This record must be submitted as per the Notice of Race (NoR).

10.4 The sailboat's GPS tracking record shall be saved and provided for evidentiary review by the Race Committee on request.

## **11 OBSTRUCTIONS & EXCLUSION ZONES**

11.1 None.

## **12 THE START**

12.1 Races will be started by using *Rule 26*, with an interval of at least one minute between a starting signal and the warning signal for the next start.

12.2 The starting line will be between an inflatable mark and the halyard carrying an orange flag on the Race Committee signal vessel.

12.3 After the first warning signal and prior to her warning signal, a boat shall keep clear of the starting area that extends one-quarter of the length of the starting line ahead of and behind the starting line. It shall also extend one-quarter of the length of the starting line past both ends of the starting line; see Diagram 3, The Starting Area.

12.4 *If and only if, code flag "L" is displayed*, on the Race Committee Signal Vessel, sailboats shall sail on starboard tack close to the stern of the Race Committee Signal Vessel and shall report its sail number. Check in will not be complete until the Race Committee acknowledges the sailboat. Check in by VHF radio or cell phone may not be accepted.

12.5 [NP] Any sailboats starting within the starting time window, as amended in the NoR, and if the Race Committee is no longer on station, shall radio the Race Committee VHF Channel 71 Canadian when she is starting.

## **13 THE FINISH**

13.1 The finish is between the Finish Mark and the blue & orange flags at the Race Committee Shore Station.

13.2 Each sailboat shall call/hail the Race Committee Shore Station approximately three (3) NM from the finish on VHF Channel 71 Canadian. Sailboats are required to maintain radio contact with the shore station throughout the finish to ensure correct identification of the finishing sailboat, until 30 minutes after finishing, whether day or night. When finishing between sunset and sunrise, all sailboats shall announce their sail numbers, immediately prior to finishing, and record their finish time.

13.3 After a sailboat has finished, the Race Committee may acknowledge the completion by providing the sailboat's finish time or other signal. This acknowledgement, the failure to make the acknowledgement or its order, will not be grounds for a request for redress. This changes RRS 62.1 (a).

## **14 PENALTY SYSTEM**

14.1 The Scoring Penalty, RRS 44.3, applies.

## **15 TIME LIMITS**

15.1 There is no time limit.

## 16 HEARING REQUESTS.

- 16.1 Protests or Requests for Redress shall be filed using online submission feature available after logging into the Owner's Corner on Race Document and Registration Web Site, within two hours of a sailboat's finish.
- 16.2 Notices of Protests or Requests for Redress by the Race Committee, Technical Committee or Protest Committee will be posted to inform boats under rule 61.1(b) on the [Official Notice Board](#). The time limit for filing Protests or Requests for Redress by the Race Committee or Technical Committee is two hours after the last boat to finish or retire, whichever is later. This changes RRS 61.1 b.
- 16.3 Hearings will take place at 1900 EDT, Tuesday July 23, 2024, or otherwise scheduled by the Protest Chair at PCYC.

## 17 SCORING

- 17.1 Solo/Single-Handed (SH), Double-Handed (DH) & Fully Crewed (FC) sailboats will race under following rating/handicap systems:
- |           |   |
|-----------|---|
| Multihull | GLMRA Rule applies                              |
| ORC       | Single number system using time on time ratings |
| PHRF-LO   | Time on Time from PHRF-LO P2P Rating            |

## 18 SAFETY REGULATIONS

- 18.1 [NP] Sailboats are encouraged to implement their own check-in process and with individuals ashore via phone email or other mechanism.
- 18.2 A sailboat withdrawing from the race shall wear her ensign and keep clear of other competitors.
- 18.3 [DP] The Race Committee shall be notified of a sailboat's withdrawal at the earliest possible opportunity on VHF Channel Canadian 71, at the following telephone number 1-866-462-8828, or at the email address of [racecommittee@loor.ca](mailto:racecommittee@loor.ca).
- 18.4 Sailboats may check in with the Race Committee at any time during the race to advise the Race Committee of their position at 1-866-462-8828 or the email address of [racecommittee@loor.ca](mailto:racecommittee@loor.ca) .
- 18.5 Failure of a sailboat to make every reasonable effort, under the circumstances, to comply with SI 18.3, may result in protest by the Race Committee. The results of this hearing may be used by the Organizing Authority whether to accept future registrations by this sailboat or owner.
- 18.6 All sailboats racing shall be required to maintain a log of significant events, mark rounding, calls to the Coast Guard, and engine on and off for charging only. This record must be submitted as per Notice of Race (NoR).

## **19 EQUIPMENT AND MEASUREMENT CHECKS**

[NP] [DP] A sailboat may be inspected at any time during the period from the Mandatory Participants' Meeting until three hours after her finish. The Race Committee may, at the finish of the race, direct a sailboat to proceed directly to a designated location at Port Credit Yacht Club. A boat which fails to follow such directions, or which subsequently fails the inspection may be protested by the Technical Committee.

## **20 PRIZES**

20.1 Prizes will be given as listed on the NoR or at [www.loor.ca](http://www.loor.ca) .

20.2 Flags will be presented at Etobicoke Yacht Club (EYC) Saturday night, July 20, 2024.

20.3 The trophies will be presented at the LOOR Combined Trophy Banquet on Saturday, November 16, 2024, at Port Credit Yacht Club (PCYC).

## **21 RISK STATEMENT**

By participating in this event each competitor agrees and acknowledges that sailing is a potentially dangerous activity with inherent risks. These risks include strong winds and rough seas, sudden changes in weather, failure of equipment, boat handling errors, poor seamanship by other boats, loss of balance on an unstable platform and fatigue resulting in increased risk of injury. Inherent in the sport of sailing is the risk of permanent, catastrophic injury or death by drowning, trauma, hypothermia, or other causes. By participating in this event, each competitor agrees to release the race organizers, volunteers, and sponsors from all liability associated with such competitor's participation in this event to the fullest extent permitted by law.

The Person-in-Charge/Skipper/Owner of the boat is responsible for the safety of the crew and the boat and is solely at their discretion to participate in any events

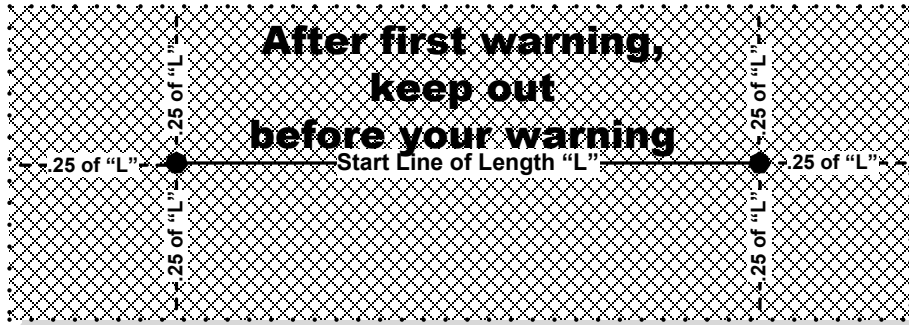
## **22 INSURANCE**

22.1 [DP] Each participating sailboat shall be insured with a valid third-party liability insurance policy with a minimum cover of \$2,000,000 CAD per event for Canadian boats and an adequate level of third-party liability insurance applicable in Canadian and US waters for non-Canadian sailboats.



# Diagram 1

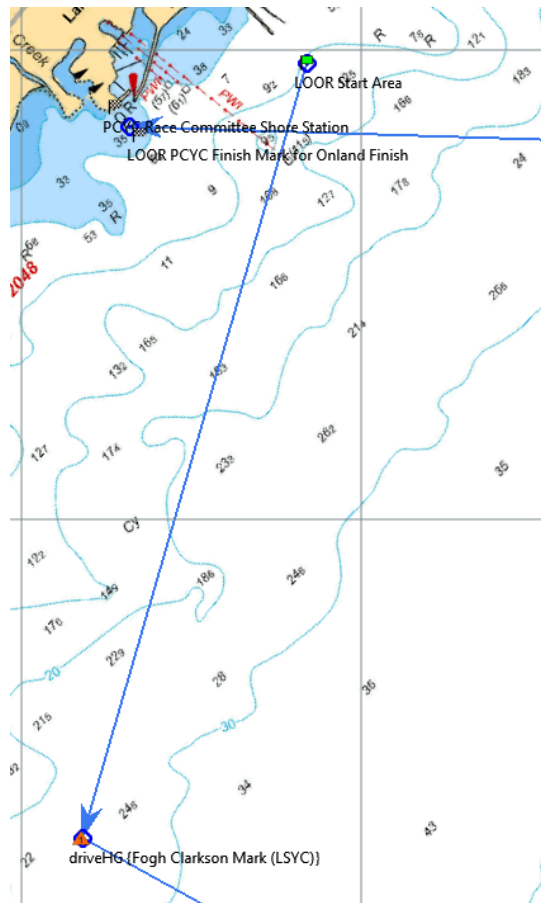
## The Starting Area



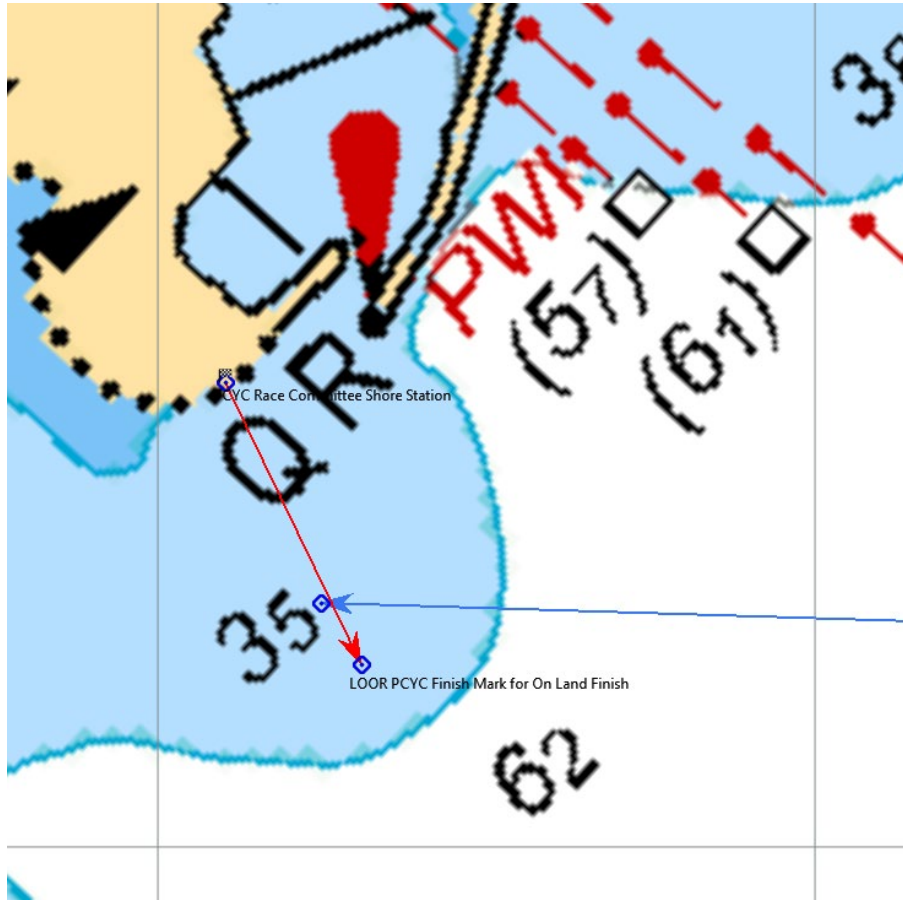
### The Starting Area

After the first warning signal for a race and prior to her warning signal, a sailboat shall keep clear of the starting area that extends one-quarter of the length of the starting line ahead of and behind the starting line. It shall also extend one-quarter of the length of the starting line past either end of the starting line

### See SI 12



## Diagram 2 The Finish



- For a description and locations of the marks, see SI 10.
- For details of the Finish, see SI 13

## Further Information

Supplementary Information is available at:  
<https://yachtscoring.com/emenu.cfm?eid=16289> under Documents & Forms and does not constitute a rule.

<b>ORGANIZING AUTHORITY CONTACTS</b>		
LO300 Registration	<a href="mailto:registrar@loor.ca">registrar@loor.ca</a>	<a href="http://www.loor.ca">www.loor.ca</a>
LO300 Race Committee	<a href="mailto:racecommittee@loor.ca">racecommittee@loor.ca</a>	<a href="http://www.loor.ca">www.loor.ca</a>
LOOR Safety	<a href="mailto:safety@loor.ca">safety@loor.ca</a>	<a href="http://www.loor.ca">www.loor.ca</a>
LOOR	<a href="mailto:info@loor.ca">info@loor.ca</a>	<a href="http://www.loor.ca">www.loor.ca</a>
GLSS	<a href="mailto:glss@loor.ca">glss@loor.ca</a>	<a href="http://www.solosailors.org">www.solosailors.org</a>
PCYC		<a href="http://www.pcy.net">www.pcy.net</a>
<b>HANDICAP SYSTEMS CONTACTS</b>		
GLMRA	<a href="mailto:racecommittee@loor.ca">racecommittee@loor.ca</a>	
ORC – Ontario District	<a href="mailto:can3005@aol.com">can3005@aol.com</a>	<a href="http://www.orc-canada.org">www.orc-canada.org</a>
PHRF-LO	Contact your club's PHRF-LO Handicapper	<a href="http://www.phrf-lo.org">www.phrf-lo.org</a>