

21<sup>st</sup> Annual



Bayview Yacht Club's  
Women on Water Regatta

The WOW Point-to-Point Race

for the

Natalie J. O'Niel Trophy

Bayview Yacht Club

Saturday, August 10, 2024

# Sailing Instructions Amendment 1

Section 15.5 is deleted in entirety – it does not apply.

Section 15.8 is deleted in entirety – it does not apply

Section 16.6 is renumbered as 15.6

Attachment A, Course 3 is modified as follows (changes in red)

**Course 3 (Pennant 7): Distance 5.4nm**

From:	To:	Lat.	Long.	Mark to:	Bearing	Range
BYC Start	G1A	N42 21.209	W82 57.472	Port	275	0.3nm
G1A	<b>QG1</b>	N42 22. <b>027</b>	W82 53. <b>989</b>	Port	80	2.7nm
<b>QG1</b>	BYC Finish	N42 21.225	W82 57.072		258	2.4nm

These changes are highlighted in the Sailing Instructions below in **RED**.

---

The Organizing Authority (OA) for this regatta is Bayview Yacht Club (“BYC”).

**1. RULES**

- 1.1 The WOW Point-to-Point Race will be governed by the rules as defined in the Racing Rules of Sailing (RRS) including the US SAILING prescriptions, and the BYC Club Boat Policy.
- 1.2 Competitors shall not interfere with commercial shipping transiting the racing area at any time. This includes tour boats such as the Detroit Princess, the Diamond Jack and the Infinity and Ovation as well as freighters, tugboats, barges, commercial towing, and federal and local law enforcement including the US Coast Guard. Any boat not complying may be subject to protest by the Race Committee and may be reported to the Coast Guard.
- 1.3 Ultimate 20 class rules will not apply.
- 1.4 All competitors sailing the Ultimate 20s must adhere to the BYC Club Boat Policy
- 1.5 In accordance with the U.S. Sailing prescription to RRS 88.2, RRS 61.4 (a U.S. Sailing prescription), Appendix R, and the U.S. Sailing prescriptions to RRS 60.3, 67, 70.5(a), and 76.1 will apply at all times.

**2. NOTICES TO COMPETITORS**

- 2.1 Notices to competitors shall be posted on the official notice board located on Yachtscoring.com - <https://www.yachtscoring.com/emenu.cfm?eID=16296>. An unofficial notice board will be maintained at BYC in the Mackinac Room.

**3. CHANGES TO SAILING INSTRUCTIONS**

- 3.1 Prior to noon on Saturday August 10th, any change to the sailing instructions shall be posted on YachtScoring.com - <https://www.yachtscoring.com/emenu.cfm?eID=16296>.
- 3.2 After noon on Saturday August 10th, any changes to Sailing Instructions will be made verbally to all competitors and/or broadcast on Channel 72.

**4. SIGNALS MADE ASHORE**

- 4.1 Signals ashore will be displayed from the flagpole on the south lawn (river side) of BYC.
- 4.2 When flag AP is displayed ashore, "1 minute" is replaced with "not less than 15 minutes" in race signal AP. This changes RRS Race Signals

**5. SCHEDULE OF EVENTS**

Saturday, August 10, 2024

1600	Sailors Meeting
1700	The First Warning Signal
Following Race	Post-Race Party & Awards

**6. CLASS FLAGS AND STARTING SEQUENCE**

<u>START #</u>	<u>CLASS</u>	<u>FLAG</u>
----------------	--------------	-------------

Start 1	MWPHRF 1	Pennant 1
---------	----------	-----------

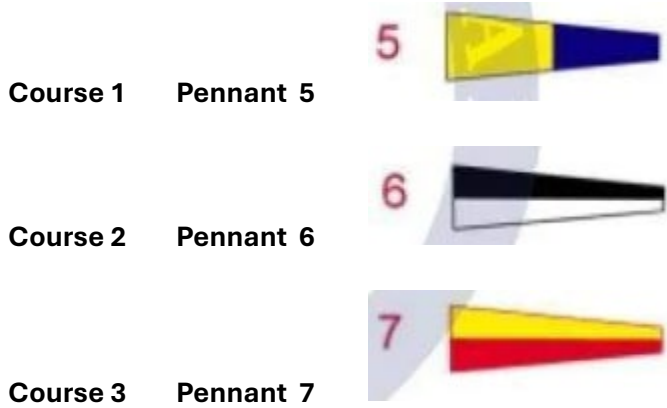


Start 2	MWPHRF 2	Pennant 2
---------	----------	-----------



**7. RACING AREA AND COURSES**

- 7.1 The intended course is the Detroit River and lower Lake St. Clair with the finish in the Detroit River near Bayview Yacht Club.
- 7.2 The course will be point-to-point. If there are multiple classes, there may be different courses for different classes.
- 7.3 Marks of the course may include BYC inflatable marks as well as possible government navigational buoys.
- 7.4 Courses will not be shortened. This changes RRS 32.
- 7.5 The diagram in Attachment A shows the courses for the Point to Point race (including the course designation number), the color of the marks, the order in which marks are to be passed, and the side on which each mark is to be taken.
- 7.6 No later than the warning signal for each class, the race committee will signal the course to be sailed by flying the following pennant flags:



**8. MARKS**

- 8.1 The starting and finishing marks will be either an orange inflatable tetrahedron or marksetbot.
- 8.2 The marks of the course are government navigational buoys and are designated in Attachment A.

**9. AREAS THAT ARE OBSTRUCTIONS**

- 9.1 Competitors are cautioned not to sail closer than 100 yards to the Peche Island Range Rear Light or between the Peche Island Range Rear Light and Peche Island at any time (refer to NOAA chart 14850).
- 9.2 Commercial ships transiting the St. Clair Ship Channel are severely limited in their maneuverability. A boat shall not interfere with a commercial vessel in the St. Clair Ship Channel.
- 9.3 Sailing is not permitted within 50 feet of shore along the river adjacent to Bayview Yacht Club

**10 THE START**

- 10.1 Races will be started by using RRS 26 with the warning signal made 5 minutes before the starting signal.

- 10.2 The starting line for the Point to Point race shall be between a staff displaying an orange flag located on the balcony of the BYC "Commodores Room" and the course side of an inflatable orange buoy or orange marksetbot floating in the river opposite the mark ashore.
- 10.3 If any part of the boat's hull is on the course side of the starting line at her starting signal and she is identified, the RC will attempt to broadcast her sail number on the assigned Racing Area VHF channel. Failure to make a broadcast or to time it accurately will not be grounds for a request for redress. This changes RRS62.1(a).
- 10.4 A boat starting later than 5 minutes after her starting signal shall be scored Did Not Start without a hearing. This changes RRS A4 and A5.

## **11. CHANGE OF COURSE AFTER THE START**

- 11.1 There will be no change of course.

## **12. RETIRING FROM THE RACE**

- 12.1 Boats retiring from the race shall inform the Race Committee as soon as possible either by hail or on VHF channel 72.

## **13. THE FINISH**

- 13.1 The finish line shall be between a staff displaying an orange flag located on the Bayview Yacht Club "Commodores Room" balcony and an inflated orange buoy or orange marksetbot floating in the river opposite the mark ashore.

## **14. TIME LIMITS**

- 14.1 Boats failing to finish within 60 minutes after the first boat in its class sails the course and finishes shall be scored Time Limit Expired (TLE) without a hearing. *This changes RRS 35, A5.1, A5.2 and A10.*

## **15. PROTESTS AND REQUESTS FOR REDRESS**

- 15.1 Protest forms are available at the race office, located at Bayview Yacht Club, or online at <https://www.yachtscoring.com/emenu.cfm?eID=16296>, under general race forms. Protests and requests for redress or reopening shall be delivered there within the appropriate time limit.
- 15.2 For each class, the protest time limit is 60 minutes after the last boat has finished.
- 15.3 Notices will be posted no later than 30 minutes after the protest time limit to inform competitors of hearings in which they are parties or named as witnesses. Hearings will be held in the protest room, located at Bayview Yacht Club. Beginning time posted will be posted on the official notice board.
- 15.4 Notices of protests by the race committee, technical committee or protest committee will be posted to inform boats under RRS 61.1(b).
- ~~15.5 A list of boats that, under SI 14.3, have been penalized for breaking RRS 42 will be posted.~~
- 15.6 Breaches of SIs 12 and 17 will not be grounds for a protest by a boat. This changes RRS 60.1(a).
- ~~15.8 Decisions of the protest committee will be final as provided in RRS 70.5.~~
- 15.9 If the race committee posts a list of boats scored OCS, ZFP, UFD or BFD on the official notice board before the protest time limit, a request for redress based on such a posted score shall be made no later than one hour after the protest time limit. This changes rule 62.2.

**16. SCORING**

- 16.1 Scoring system will be in accordance with RRS Appendix A
- 16.2 One race shall constitute a series.
- 16.3 MWPHRF classes shall be scored using MWPHRF Time-on-Time (TOT) ratings.

**17. RADIO COMMUNICATION**

- 17.1 Except in an emergency, a boat that is racing shall not make voice or data transmissions and shall not receive voice or data communication that is not available to all boats.
- 17.2 It is recommended that all boats have a VHF radio on board.

**18. COURTESY BROADCASTS.**

- 18.1 The RC may attempt to provide information on VHF Channel 72 as a courtesy. In all cases, race signals shall govern. Failure to hear or receive such transmission will not be grounds for redress. This changes RRS 62. A boat shall not make any radio transmissions while racing except on VHF Channel 16 or with the RC on VHF Channel 72. While racing, a boat shall not receive communication that is not freely available to all boats. This restriction also applies to mobile telephones.

**19. PRIZES**

- 19.1 Awards will be made for 1<sup>st</sup>, 2<sup>nd</sup> and 3<sup>rd</sup> place finishes in each class.
- 19.2 The Natalie J. O’Niel Trophy will be awarded to the boats that finish first in each MWPHRF Class, with no male crew members aboard.
- 19.3 Awards will take place on Saturday after the point to point race.

**20. DISCLAIMER OF LIABILITY**

- 20.1 Competitors participate in the regatta entirely at their own risk. See RRS Rule 4, “Decision to Race.” The Organizing Authority will not accept any liability for material damage or personal injury or death sustained in conjunction with or prior to, during, or after the regatta. All skippers and crew will be required to sign a liability waiver.

## Attachment A

Locations are approximate and visual aids are not for navigation.

### Course 1 (Pennant 5): Distance 8.1nm

From:	To:	Lat.	Long.	Mark to:	Bearing	Range
BYC Start	G1A	N42 21.209	W82 57.472	Port	275	0.3nm
G1A	G5	N42 22.950	W82 52.587	Port	72	4nm
G5	BYC Finish	N42 21.225	W82 57.072		250	3.7nm

### Course 2 (Pennant 6): Distance 6.7nm

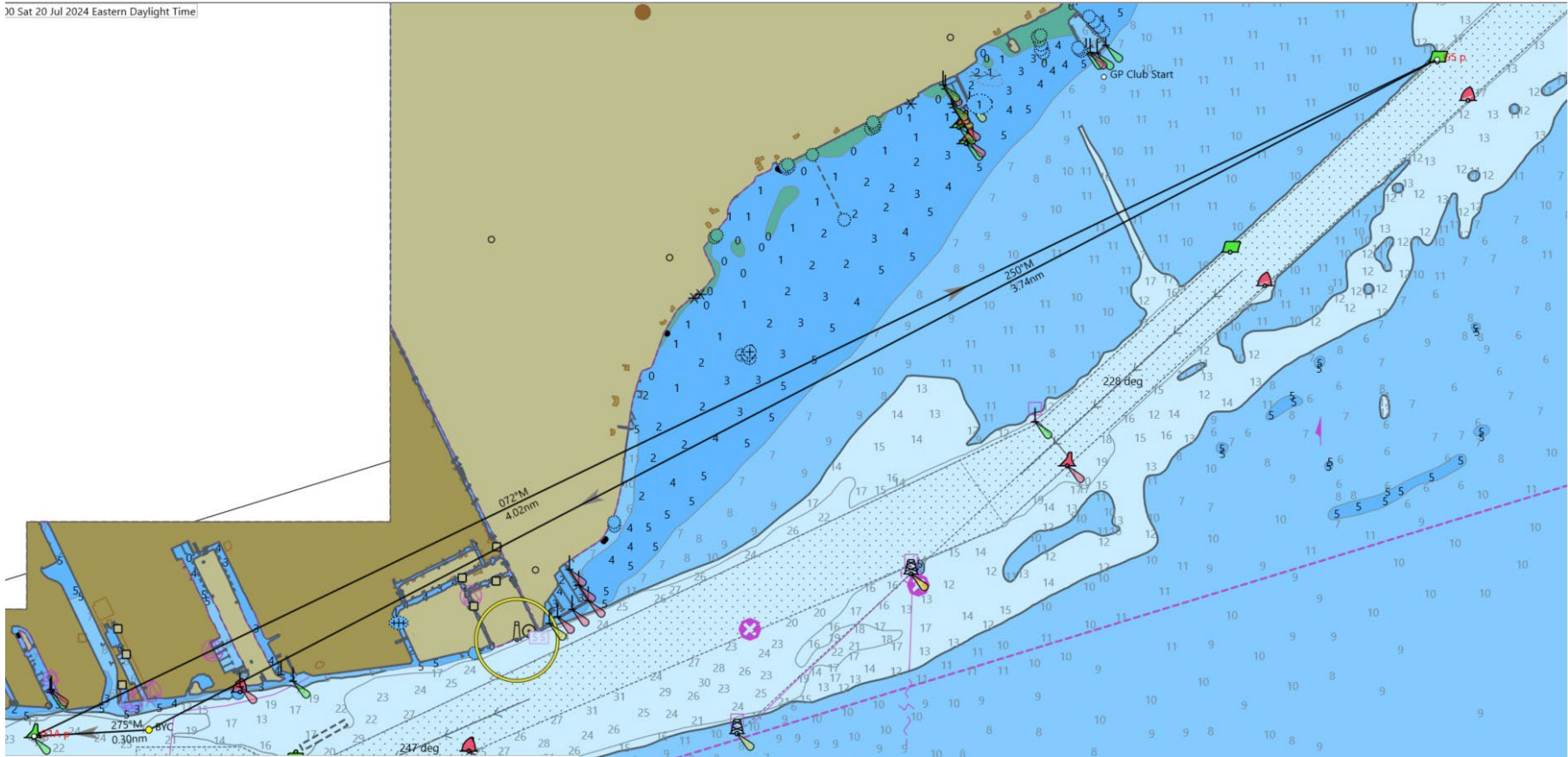
From:	To:	Lat.	Long.	Mark to:	Bearing	Range
BYC Start	G1A	N42 21.209	W82 57.472	Port	275	0.3nm
G1A	G3	N42 22.471	W82 53.306	Port	75	3.3nm
G3	BYC Finish	N42 21.225	W82 57.072		254	3.1nm

### Course 3 (Pennant 7): Distance 5.4nm

From:	To:	Lat.	Long.	Mark to:	Bearing	Range
BYC Start	G1A	N42 21.209	W82 57.472	Port	275	0.3nm
G1A	QG1	N42 22.027	W82 53.989	Port	80	2.7nm
QG1	BYC Finish	N42 21.225	W82 57.072		258	2.4nm

# Course 1

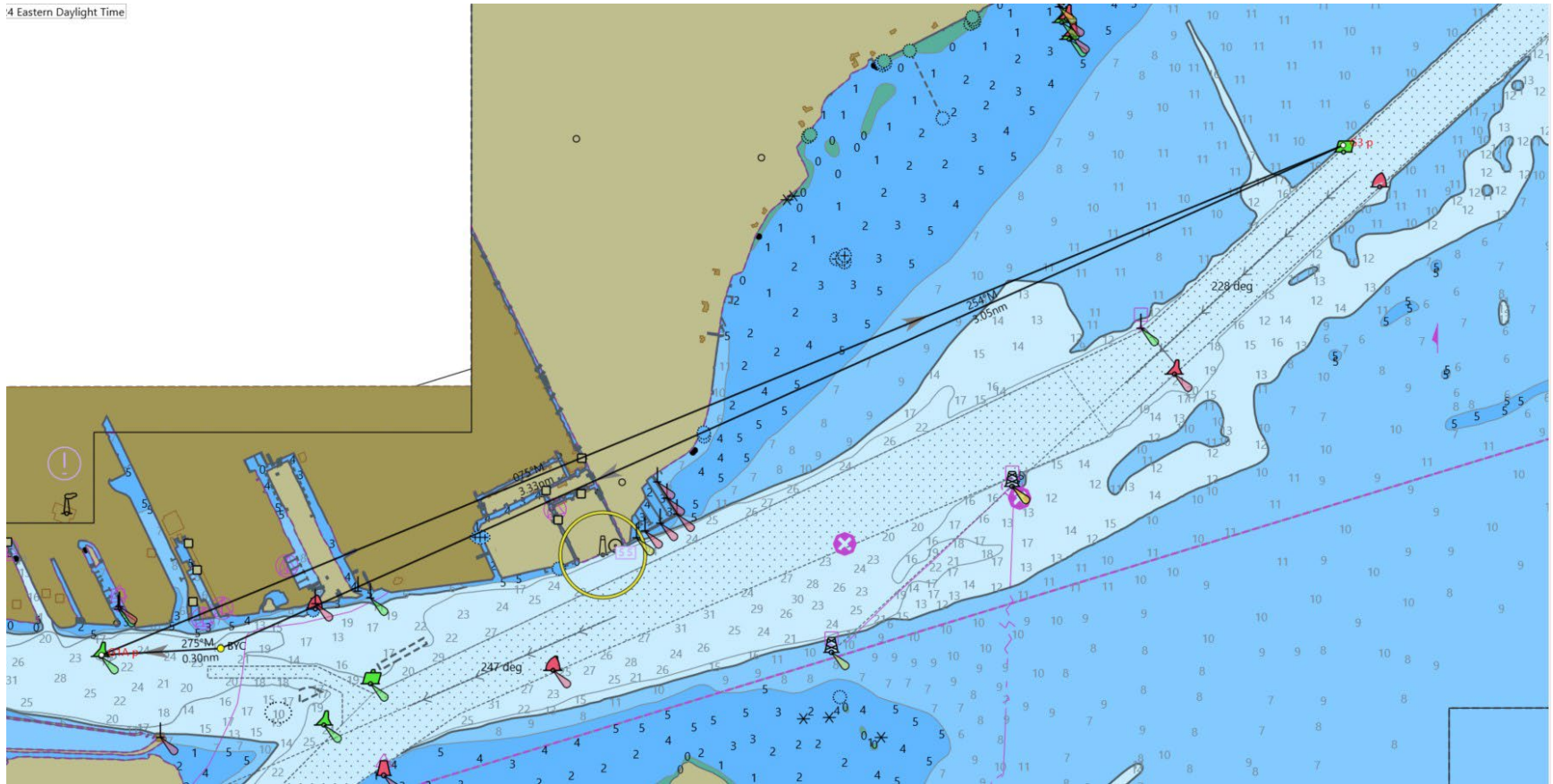
30 Sat 20 Jul 2024 Eastern Daylight Time





# Course 2

4 Eastern Daylight Time





Course 3

