

# The 2024 Invitational Mills Trophy Race

## June 07-09, 2024

Organized under the Authority of the Toledo Yacht Club, Storm Trysail Club,  
and the Mills Trophy Race Committee  
Toledo, Ohio, USA

### SAILING INSTRUCTIONS

[NP] The notation ‘[NP]’ in a rule means that a boat may not protest another boat for breaking that rule. This changes RRS 60.1(a) and 60.2(a).

[DP] The notation (DP) in a rule means that a boat may be given a Discretionary Penalty for breaking that rule (see RRS 64.6).

#### 1 RULES

- 1.1.1 The regatta will be governed by the *rules* as defined in the current Racing Rules of Sailing (RRS) and Class Rules on file with the Mills Trophy Race Committee. For example, the rules of PHRF-LE and GLMRA.
- 1.1.2 The US SAILING Prescriptions to rules 60.3 and 63.2 shall not apply.
- 1.2.1 Each individual competitor may, with the agreement of the Mills Race Committee, display Advertising on clothing and personal equipment without restriction.
- 1.2.2 Advertising chosen and provided by the Mills Race Committee may be displayed on hulls, spars, and sails without restriction except on the spaces reserved for identification by Appendix G of the Racing Rules and under Regulations 20.5 & 20.9.
- 1.3 Each yacht must conform to the current US Sailing’s US Safety Equipment Requirements (USSER, effective 3/1/2023, Version 2023.0 valid through December 31, 2024 as amended by the Mills Trophy Race Committee) ) governing minimum safety equipment, accommodations, lifelines, and Safety at Sea requirements for Coastal events will apply. These requirements are available at [2024 Mills Trophy Race Documents](#). A copy of these requirements should be kept aboard while racing. In the event of a conflict between these requirements and applicable class rules, the class rules shall apply.
- 1.4 Annually, two-thirds of the boat’s racing crew shall practice man-overboard procedures appropriate to the boat’s size and speed and must carry onboard a completed Crew Overboard Drill Certificate signed by participating crew members. See Mills Safety Equipment Requirement #4.2. A Crew Overboard Drill Certificate may be downloaded from the “Documents & Forms” section on Yacht Scoring.

- 1.5 Per Mills Safety Equipment Requirement #4.3.2, No Fewer than two members of the crew, unless racing single-handed, shall have a valid certificate from attending a US Sailing Safety at Sea Seminar, on-line course, or the equivalent.
- 1.6 Racing yachts shall carry corresponding numbers on mainsails, spinnakers, storm trysails and all overlapping headsails whose LP measurement exceeds 130%.

**2 NOTICES TO COMPETITORS**

Notices to competitors will be posted on the official notice board located at the Toledo Yacht Club and also online at [2024 Mills Trophy Race Documents](#)

**3 CHANGES TO SAILING INSTRUCTIONS**

Any change to the sailing instructions will be posted before 1200 on Friday, June 07, 2024.

**4 SIGNALS MADE ASHORE**

- 4.1 Signals made ashore will be displayed at the Toledo Yacht Club flagpole.
- 4.2 When flag AP is displayed ashore, ‘1 minute’ is replaced with ‘not less than 2 Hours’ in the race signal AP. This changes RRS Race Signals. In the event of prolonged severe weather, the Race Committee may postpone the race start until the following morning. If such should occur, the Race Committee reserves the right to change the course for all entrants to the Alternate Course (see Sec 9.4). The Alternate Course and new start sequence schedule will be posted at Toledo Yacht Club and on-line at [Yacht Scoring](#) within two hours of the AP signal.

In the event of complete cancellation of the race, festivities will continue as planned at Put-in-Bay.

**5 SCHEDULE OF RACES**

- 5.1 Date of racing: Friday June 07, 2024
  - Harbor Gun: 1430
  - Attention Signal Several Short Blasts 1654
  - First Warning 1655

**6 CLASS FLAGS and STARTS – (see Appendix A – Class Flags & Starts)**

- 6.1 Class flags shall correspond to start positions indicated on the Scratch Sheet and are identified by alpha/numeral pennants.
- 6.2 Class assignments will be made by the race committee and shall appear on the Scratch Sheet.

### 6.3 Preliminary Starting Times

#### **Mills Trophy Course (67.8 nm)**

<b>Start No.</b>	<b>Class</b>	<b>Class Flag</b>	<b>Warning Signal</b>
1	PHRF D & D1	#1	1655
2	PHRF B & C	#2	1700
3	PHRF A	#3	1705
4	MULTI-HULL	#4	1710

#### **Governor's Cup Course (52.6 nm)**

<b>Start No.</b>	<b>Class</b>	<b>Class Flag</b>	<b>Warning Signal</b>
5	PHRF G & H	#5	1715
6	PHRF E & F	#6	1720

#### **President's Trophy Course (37.6 nm)**

<b>Start No.</b>	<b>Class</b>	<b>Class Flag</b>	<b>Warning Signal</b>
7	DOUBLE-HANDED	#7	1725
8	PHRF I	#8	1730
9	CRUISING CLASS	#9	1735
10	JIB & MAIN C	D	1740
11	JIB & MAIN B	E	1745
12	JIB & MAIN A	F	1750
13	Optional CLASS	R	1755

Scratch sheets will be posted on the official Bulletin Board at TYC and on-line at [Yacht Scoring](#) no later than 1800 Thursday June 08, 2023.

## **7 RACING AREAS**

- 7.1 Attachment C of these Sailing Instructions and included in the Race Program shows the location of racing areas.
- 7.2 Required (non-electronic) charts – 14830, 14844

## **8 THE COURSES**

- 8.1 Attachment C of these Sailing Instructions and included in the Race Program show the courses, including the approximate angles between legs, the order in which marks are to be passed, and the side on which each mark is to be left.

The approximate course lengths will be:

Mills Trophy Course: 67.8 nm for Multi-hulls, PHRF (147 and below) and higher rated boats racing for the Mills Trophy.

President's Trophy Course: 37.6 nm for all JAM classes, Double-handed, PHRF (150 and above), Cruising and Classics with 6 or more entries.

Governor's Cup course: 52.6 nm optional course for PHRF (147 and below).

## **9 MARKS**

### **9.1 Mills Trophy Course**

From the *Sailing Inc. Starting Line*, proceed in a northeasterly direction to the RACON Buoy FI G 5s "1E" at the base of the East Outer Channel, rounding it to starboard. Proceed in a southerly direction, rounding West Sister Island to port, then keeping the Niagara Reef Buoy G "5" Fl G 4s to starboard and Scott Point Shoal Light G "1" Fl G 4s to starboard, round the Sandusky Harbor (Mosley) Channel Buoy R "2" Fl R 4s to port. Proceed north to Kelleys Island Shoal Buoy G "1" Fl G 4s, leaving it to port. From there to Gull Island Shoal Buoy R "4" Fl R 4s leaving it to starboard, then northwest to the BELL Buoy G "1" Fl G 4s, east of Middle Bass Island, rounding it to port and to the *Frosty's Finish Line*, keeping Ballast Island to port. Total Course Length: 67.8 nm.

### **9.2 President's Trophy Course:**

From the *Sailing Inc. Starting Line*, proceed in a northeasterly direction to the outer Toledo Channel Buoy G "1" QG rounding it to starboard. Proceed in a southeasterly direction keeping the Niagara Reef Buoy G "5" Fl G 4S to Starboard. Round Catawba Island Buoy G "1" Fl G 4s to port, leave Mouse Island to Starboard, proceed northeasterly and leave Scott Point Shoal Light G "1" Fl G 4s to Port, then to Ballast Island rounding it to port, to the *Frosty's Finish Line*.

Total Course Length: 37.6 nm.

### **9.3 Governor's Cup Course:**

From the *Sailing Inc. Starting Line*, proceed in a northeasterly direction to the outer Toledo Channel Buoy G "1" QG rounding it to starboard. Proceed in a southeasterly direction keeping the Niagara Reef Buoy G "5" Fl G 4s to starboard. Round Catawba Island Buoy G "1" Fl G 4s to port, leave Mouse Island to starboard and round the Sandusky Harbor (Moseley) Channel Buoy R "2" Fl R 4s to port. Proceed in a north-northwesterly direction to Kelley's Island keeping the R "2" Fl R 4s Buoy to starboard then to Ballast Island rounding it to port, to the *Frosty's Finish Line*.

Total Course Length 52.6 nm

#### 9.4 **Alternate Course to Put-in-Bay**

In the event of a postponement that results in the race starts being rescheduled to Saturday morning, the Alternate Course will be used to get the race entrants to Put-in-Bay. From the *Sailing Inc. Starting Line*, proceed directly to the *Frosty's Finish Line*, crossing from west to east, with your reflective numbers positioned aft of the mast on the starboard (shoreside) lifelines. Total Course Length 22.6 nm

- 9.5 The *Sailing Inc. Starting Line* shall be identified on the Race Committee boat by a Yellow Flag with the black letters "RC" on the starboard end of the line and an orange tetrahedron near an Observers Yacht at the port end of the line. If no tetrahedron or Observers Yacht is on station, the port end of the line will be the Toledo Harbor Light.

### **10 THE START**

- 10.1 The Starting Area will be approximately 1.7nm SE (140 T degrees) of the Toledo Harbor Light (Approx. 41.44.3 N 83.18.1 W). The line itself shall be between an Orange Flag on the race committee signal vessel (identified by a Yellow Flag with the black letters "RC") and the course side of an orange mark at the opposite end of the line. One or more limit marks (flag buoy with half red and half green horizontal bands) may be set near a starting line. If a yacht touches any limit mark, the starting line boat, or passes between a limit mark and a starting line boat, she shall have touched a starting mark.

The *Sailing Inc. Starting Line Diagram* is found as an inset on the course diagram in the Race Program.

- 10.2 Boats are required to check in with the RC Signal vessel on **VHF 72** upon arrival in the starting area. Once acknowledged, they shall return to monitoring VHF 71 until after finishing or retiring.
- 10.3 Boats whose warning signal has not been made shall avoid the starting area during the starting sequence for other classes. All yachts sailing in this regatta may be subject to protest by the Race Committee for failing to stay clear of the indicated areas. See the inset on the course diagram in the Race Program.
- 10.4 A boat starting later than 30 minutes after her starting signal will be scored Did Not Start without a hearing. This changes rules A4 and A5.

### **11 THE FINISH**

- 11.1 The Finishing Marks will be an orange shape with a white strobe light on the water end approximately 600 ft. from the protection mark and the Lighted Flagpole flying a Yellow pennant with Black "RC" letters and an Orange Flag located on South Bass Island. An orange shape with a strobe light will be placed as a protection marker indicating shallow water near the shore. The *Frosty's Finish Line Diagram* is found in the Race Program.

If the Finish Line is to be unattended, the Race Committee will broadcast advance notification on VHF channel 71. In that case, it is the responsibility of the skipper to record and inform the Race Committee of its finishing time.

11.2 One mile before the Finish, each yacht shall contact the Race Committee on VHF channel 71 and give Yacht Name and Sail Number.

11.3 Yachts are requested to monitor VHF channel 71 until instructed to change to VHF Channel 78 for dockage or inspection instructions. **Do not break in on transmissions at the finish line.** All boats must wait for the Mills Race Harbor Master's docking instructions before entering the Put-in-Bay Harbor.

11.4 **Day Finish:**

Leave mainsail up well beyond the finishing line so that sail numbers and yacht's class may be verified after each finish.

11.5 **Night Finish:**

Note: Reflective Boat ID#'s are required to be tightly displayed aft of the beam on the portside/shoreside lifelines prior to entering the finish area (day or night). If the numbers cannot be read, the Committee may not be able to establish a finish time for the competitor. Please leave mainsail and boat ID# showing well past the finish line. Keep reflective number for next year.

11.6 **General Finishing Requirements:**

11.6.1 Each yacht shall take its own time at *The Frosty's Finish Line* and record yacht time and day on the card provided. Also, each yacht shall indicate the sail number or name of other yachts ahead, astern, and abeam (if known) on the same card.

11.6.2 It is required that the finish card with sail number and finish time be turned in at the Finish Card box at the island end of Dock B by 0900 Saturday or within 1-1/2 hours after finishing, whichever is later. Failure to turn in a finish card may subject yacht to disqualification.

**12 PENALTY SYSTEM**

12.1 The Scoring Penalty, rule 44.3, will apply. The penalty will be no less than 3 places at the discretion of the protest committee, in lieu of disqualification, but in no case should the end result be better than the fouled boat.

12.2 For the Multi Hulls class (only), rule 44.1 is changed so that the Two-Turns Penalty is replaced by a One-Turn Penalty.

**13 TIME LIMITS AND RECORDING MARKS**

13.1 There is no time limit.

- 13.2 Recording Marks of the Course:  
Each yacht shall record the yacht ahead and behind when rounding or crossing:

Mills Trophy Course: Sandusky Harbor (Moseley) Channel Buoy R”2” Fl R4s and at the Finish Line.

President’s Trophy Course: Catawba Island Buoy G”1” Fl G4s and at the Finish Line.

Governor’s Cup Course: Catawba Island Buoy G”1” Fl G4s and at the Finish Line.

## **14 PROTESTS AND REQUESTS FOR REDRESS**

- 14.1 Protest forms are available at [US Sailing Protest Forms](#) . Protests and requests for redress or reopening shall be delivered to the Race Committee at Put-in-Bay Yacht Club within the appropriate time limit. The protesting yacht shall define the dockage location of all yachts named in the protest. The protest committee suggests that the protesting yacht request a receipt signed by the party accepting the protest form.
- 14.2 For each class, the protest time limit is 2 hours after the last boat in that class finishes.
- 14.3 Notices will be posted no later than 30 minutes after the protest time limit to inform competitors of hearings in which they are parties or named as witnesses. Time and location of the hearing will be posted on the official Mills Race Bulletin Board at Put- in- Bay Yacht Club.
- 14.4 Notices of protests by the race committee or protest committee will be posted to inform boats under rule 61.1(b).
- 14.5 A request for redress based on a protest committee decision shall be delivered no later than 30 minutes after the decision was posted. This changes rule 62.2.

## **15 SCORING**

- 15.1 PHRF and JAM yachts scoring will be calculated in accordance with the yacht’s PHRF rating certificate as approved by the Race Committee. Multihull yachts will sail using the GLMRA rule. PHRF/ORC registered yachts will be assigned to race in the appropriate PHRF Class on the Mills Trophy Course, and in addition will be separately scored Time on Time All-Purpose Single Number based on their valid ORC certificate. Note: When different handicapping rules allow different sail configurations, Dual-Scored yachts competing for the Mills Trophy shall fly only PHRF-LE legal sails. If six or more boats register as ORC, ORC class flags will be awarded.

## **16 SAFETY REGULATIONS [NP]**

- 16.1 Charts required (non-electronic) are No 14830 and 14844
- 16.2 A boat that retires from a race shall notify the race committee as soon as possible by contacting them on VHF 71 or telephoning them at Put-in-Bay at (419)-297-6663. A yacht abandoning the race for any reason must break out her ensign and keep clear of

yachts still racing.

- 16.3 Through a safety meeting with the crew, the skipper must assure himself that the crew knows where the safety equipment is kept and how to use it. In addition, the skipper and crew should discuss how to handle various emergency situations including man overboard, grounding, and loss of steering, flooding, fire, and dismasting and abandon ship. The safety of a yacht and her crew is the sole and inescapable responsibility of the owner or skipper who must ensure that the yacht is fully sound, thoroughly seaworthy and manned by an experienced crew who are physically fit. The skipper of the yacht must be satisfied as to the soundness of the hull, spars, rigging, sails and all gear. He must ensure that all equipment is properly maintained and stowed.

## **17 REPLACEMENT OF EQUIPMENT**

Substitution of damaged or lost equipment will not be allowed unless authorized by the race committee. Requests for substitution shall be made to the committee at the first reasonable opportunity.

## **18 EQUIPMENT AND MEASUREMENT CHECKS**

- 18.1 A boat or equipment may be inspected at any time for compliance with the class rules and sailing instructions. Inspection is optional and at the discretion of the Race Committee.
- 18.2 [DP] When instructed by a race official on the water, a boat shall proceed to a designated area for inspection
- 18.3 Inspection of a yacht in no way limits or reduces the complete and unlimited responsibility of a yacht's skipper for the safety of a yacht or her crew. The Race Committee reserves the right to inspect entries for eligibility and equipment requirements at any time prior to the Awards. Yachts which fail to comply with these equipment and accommodation standards may be protested by the Committee. If such a protest is sustained, the yacht may be disqualified or assessed an appropriate time penalty.

## **19 TRASH DISPOSAL**

Boats shall not put any trash in the water.[NP]

## **20 RADIO COMMUNICATION**

On the water, the race committee intends to monitor and communicate with competitors via VHF radio on channel 71.



## **21 PRIZES**

An Awards Ceremony will be held at the Put-in-Bay Yacht Club starting at 0930 Sunday June 09, 2024.

Prizes will be given as follows: Flags shall be awarded to the top three finishers in each class with six (6) or more entries, plus Overall Best Corrected and Elapsed Times for Mills PHRF, Governor's PHRF, President's PHRF, President's JAM.

Trophies shall be awarded to the best finisher in each class and division. In addition, Perpetual Trophies may include (but are not limited to) the Associated Yacht Club Trophy, Cleveland Press Cup, Commodore Clement O. Miniger Trophy, Monroe Yacht Club Cup, Toledo Yacht Club Time Prize Trophy, Commodore Frank Heck Trophy, Budweiser Eagle Trophy, Commodore Affleck Bowl, Commodore Johnston/Wood Trophy, Commodore Harry L. Wood Trophy, C&C Perpetual Trophy, W.C. Noack and Sons Trophy and the Old Sam Trophy.

Race trophies for each class winner and all other overall, area and special perpetual trophies will be awarded at a special trophy presentation to be held at the Toledo Yacht Club. The date will be the Wednesday preceding the next year's race.

## **22 DISCLAIMER OF LIABILITY**

Competitors participate in the regatta entirely at their own risk. See RRS Rule 3 "Decision to Race". The organizing authority will not accept any liability for material damage or personal injury or death sustained in conjunction with or prior to, during, or after the regatta.

The Toledo Yacht Club, the Mills Trophy Race Committee, and cosponsoring clubs do not accept responsibility for loss of life or injury to participants or others or for the loss or damage to any vessel in any way or from any cause during or related to this race, cruise or related activities.

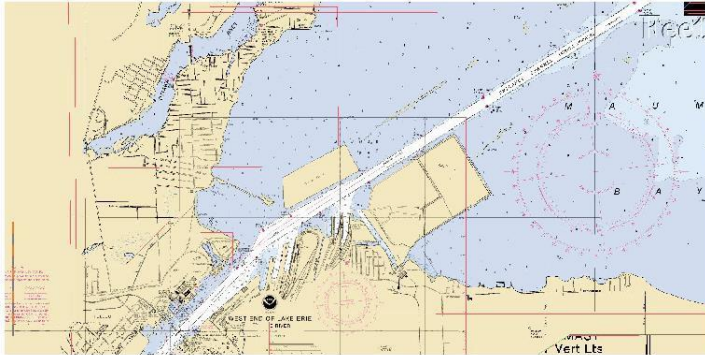
The skipper and/or owner of each yacht is responsible for the conduct of each member of the crew and is further responsible for making sure that only those of his crew who are of the legal drinking age receive the specified wristbands.

## **23 INSURANCE**

Each participating boat shall be insured with valid, third-party insurance sufficient to cover liability for loss, damage, personal injury, or death (suggested minimum \$300,000) but not less than \$100,000 for each incidence and occurrence.

# Attachments A, B, C

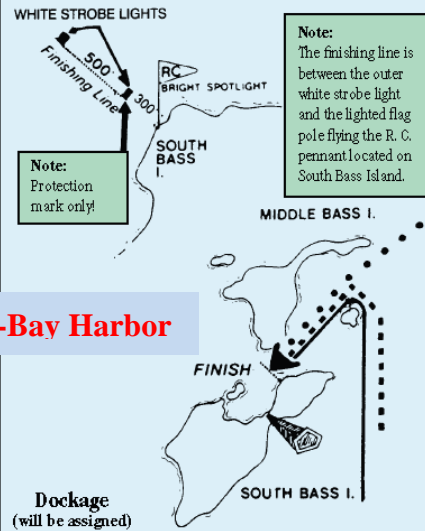
Attachment A



Toledo Yacht Club Harbor

Attachment B

Finish Line Diagram



Mills Race Courses

Attachment C

